



Figure S1 The device to fix mice for irradiation. During irradiation, the head, trunk, and left leg of mice are shielded by lead plates, while the tumor-bearing right leg fixed with adhesive tapes is not shielded. Although the mice are different from those used in this study, the same device was used.

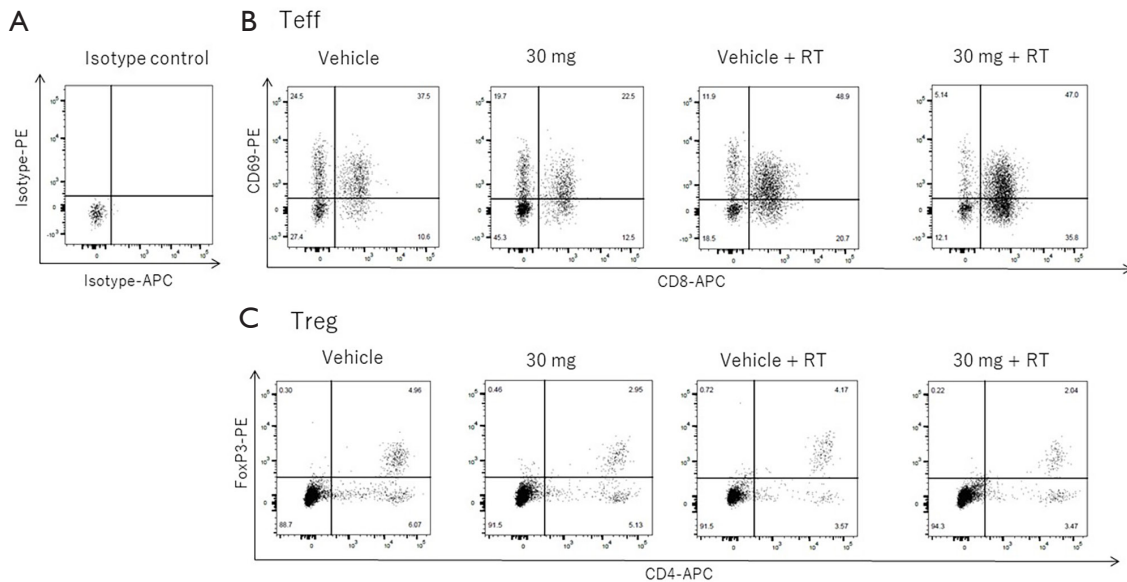


Figure S2 Representative dot plots showing effector T cells (Teff) and regulatory T cells (Treg) in the second flow cytometric analysis. (A) Dot plots using isotype control, (B) Dot plots showing CD8⁺ CD69⁺ cells in CD45⁺ cells in each treatment group, (C) Dot plots showing CD4⁺ FoxP3⁺ cells in CD45⁺ cells in each treatment group. RT, radiotherapy.