

Appendix 1

Data extraction

The OS and PFS curves in the ORIENT-11 trial were extracted with GetData Graph Digitizer (version 2.26). The survHE package in R combined with the number at risk reported in the ORIENT-11 trial was used to reconstruct the OS and PFS curves. The package survminer in R was used to draw the reconstructed survival curve (Figures S1-S4). The hazard ratios between groups, median OS, and PFS reported in the original trial are listed and combined with the reconstructed values (Table 1).

Fitting of PFS and OS curves

The best-fitting distributions for the reported OS and PFS curves in the ORIENT-11 trial were chosen using the BIC, AIC, and visual inspection (Table S2, Figures S5,S6).

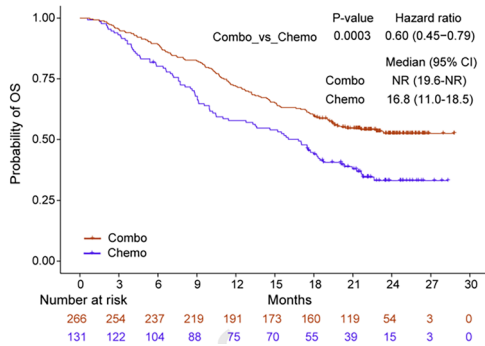


Figure S1 Original OS curve. OS, overall survival; CI, confidence interval; NR, not reported; combo, combination; chemo, chemotherapy.

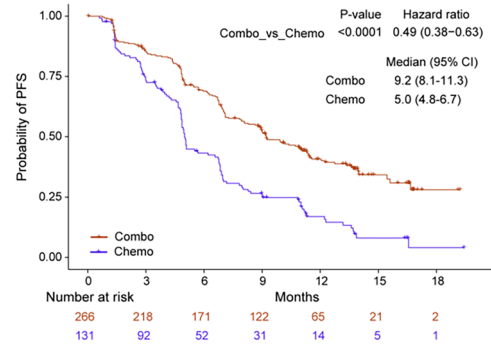


Figure S3 Original PFS curve. PFS, progression-free survival; CI, confidence interval; combo, combination; chemo, chemotherapy.

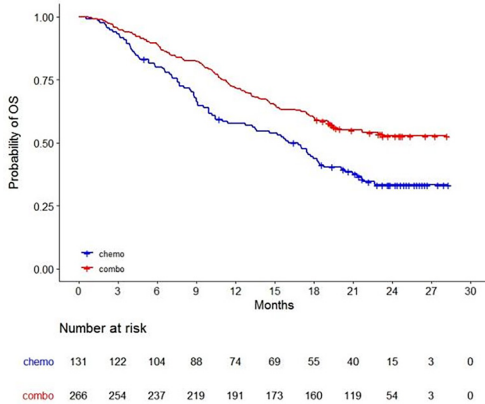


Figure S2 Reconstructed OS curve. OS, overall survival; combo, combination; chemo, chemotherapy.

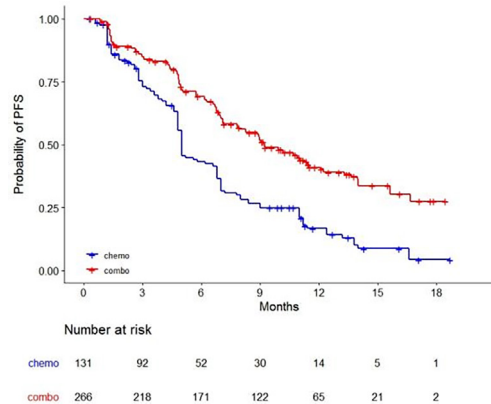


Figure S4 Reconstructed PFS curve. PFS, progression-free survival; combo, combination; chemo, chemotherapy.

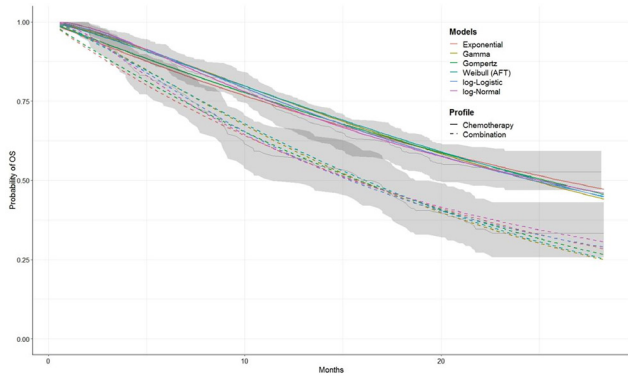


Figure S5 Visual inspection of the distributions of the OS curve. OS, overall survival; AFT, accelerated failure time.

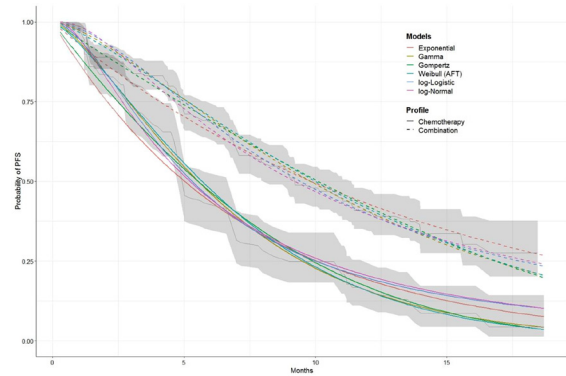


Figure S6 Visual inspection of the distributions of the PFS curve. PFS, progression-free survival; accelerated failure time.

Table S1 Hazard ratio, median OS, and median PFS of the original trial and reconstructed results

Result	Original trial data	Reconstructed data
Hazard ratio of OS, combo vs. chemo	0.60 (0.45–0.79)	0.59 (0.45–0.78)
Median OS in the combination group (months)	NR (19.60–NR)	NR (19.82–NR)
Median OS in the chemotherapy group (months)	16.80 (11.00–18.50)	16.04 (11.42–18.72)
Hazard ratio of PFS, combo vs. chemo	0.49 (0.38–0.63)	0.48 (0.38–0.62)
Median PFS in the combination group (months)	9.20 (8.10–11.30)	9.23 (8.28–11.40)
Median PFS in the chemotherapy group (months)	5.00 (4.80–6.70)	5.00 (4.80–6.80)

Data are presented as hazard ratio (95% CI), median OS (95% CI), or median PFS (95% CI). OS, overall survival; PFS, progression-free survival; combo, combination; chemo, chemotherapy; NR, not reported.

Table S2 AIC and BIC results of the fitted OS and PFS curves

Parameters	OS of combination		OS of chemotherapy		PFS of combination		PFS of combination	
	AIC	BIC	AIC	BIC	AIC	BIC	AIC	BIC
Log-logistic	1,221.062	1,228.229	748.2234	753.9738	1,232.436	1,239.603	708.5327	714.2831
Log-norm	1,217.827	1,224.994	746.8404	752.5908	1,229.776	1,236.943	706.8776	712.628
Weibull (AFT)	1,226.539	1,233.706	751.9135	757.6639	1,236.548	1,243.715	710.793	716.5434
Exponential	1,229.355	1,232.939	754.1091	756.9843	1,245.921	1,249.504	723.857	726.7322
Gamma	1,224.982	1,232.149	750.6623	756.4127	1,234.451	1,241.618	708.1119	713.8623
Gompertz	1,231.071	1,238.238	755.275	761.0254	1,243.853	1,251.02	719.0497	724.8001

AIC, Akaike information criterion; BIC, Bayesian information criterion; OS, overall survival; PFS, progression-free survival; AFT, accelerated failure time.