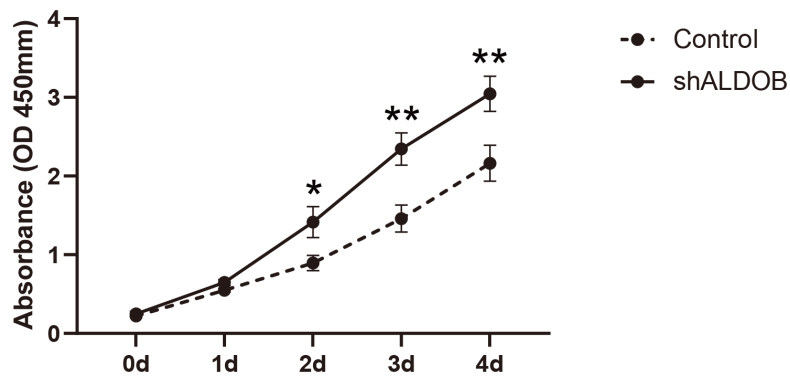
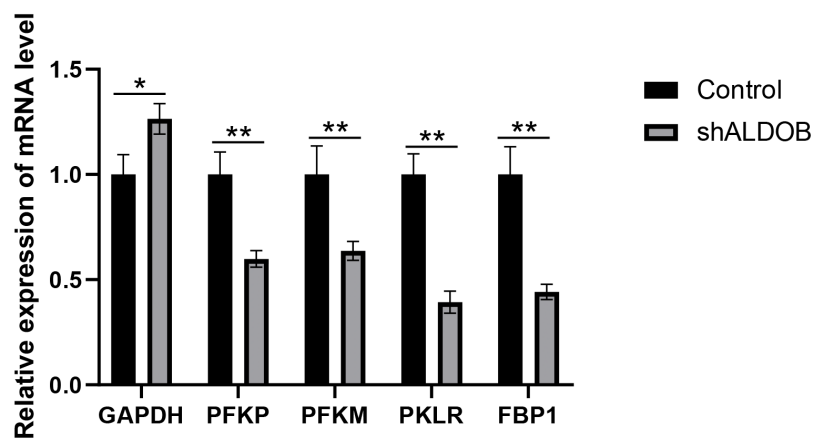


**Figure S1** Kaplan-Meier analysis results of UMOD in renal papillary cell carcinoma. UMOD, uromodulin.



**Figure S2** ALDOB inhibited proliferation of ccRCC cells *in vitro*. CCK-8 assay was used to detect cell proliferation. \* $P < 0.05$ ; \*\* $P < 0.01$ . OD, optical density; sh, short hairpin; ALDOB, aldolase, fructose-bisphosphate B; ccRCC, clear cell renal cell carcinoma; CCK-8, cell counting kit-8.



**Figure S3** qRT-PCR experiments confirmed to investigate the downstream targets of ALDOB. GAPDH, PFKP, PFKM, PKLR, FBP1 expression was confirmed using qRT-PCR analysis after the knockdown of ALDOB. \* $P < 0.05$ ; \*\* $P < 0.01$ . mRNA, messenger RNA; sh, short hairpin; ALDOB, aldolase, fructose-bisphosphate B; GAPDH, glyceraldehyde-3-phosphate dehydrogenase; PFKP, phosphofructokinase, platelet; PFKM, phosphofructokinase, muscle; PKLR, pyruvate kinase L/R; FBP1, fructose-bisphosphatase 1; qRT-PCR, quantitative real-time polymerase chain reaction.