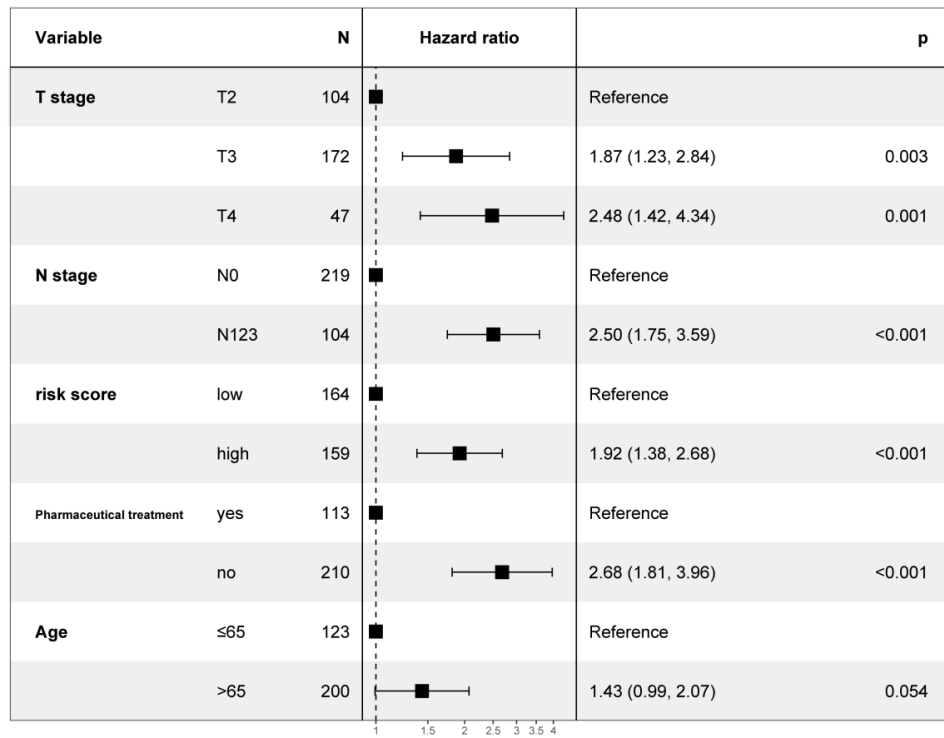
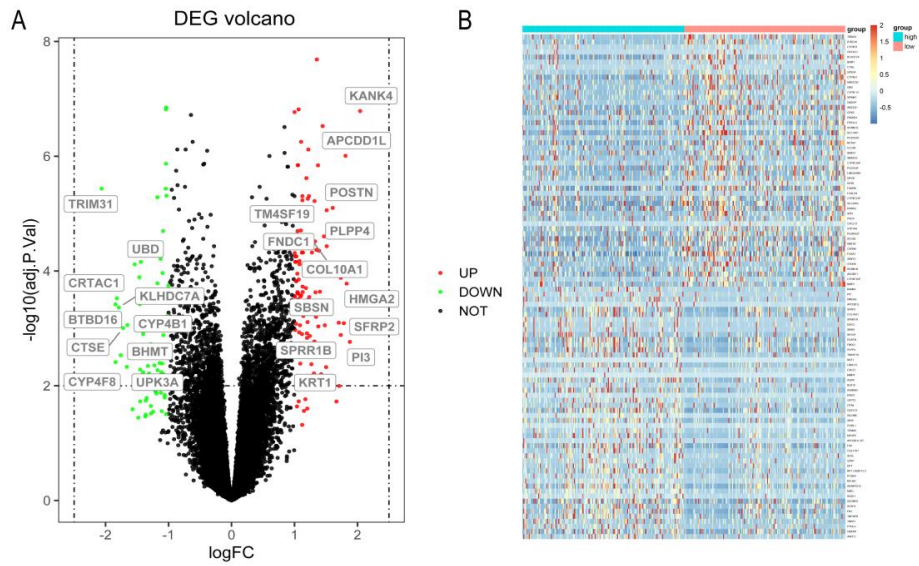


**Figure S1** Kaplan-Meier curve analysis of clinical characteristics. Kaplan-Meier curve showed that T stage, N stage, TNM stage, age and pharmaceutical treatment were associated with the prognosis of MIBC patients. TNM, tumor node metastasis; MIBC, muscle-invasive bladder cancer.



**Figure S2** The results of multivariate Cox regression analysis of the risk score and prognosis-related clinical characteristics showed that the risk score, T stage, N stage, age, and pharmaceutical treatment were all independent prognostic factors.





**Figure S3** Volcano plot and heatmap of 194 differential genes between high-risk group and low-risk group. (A) In the volcano plot, the differential genes that met  $\text{adj.P.Val} < 0.01$  &  $\text{abs}(\log\text{FC}) > 1.5$  would be marked with gene symbols. (B) The heatmap presents the top 50 up-regulated genes and the top 50 down-regulated genes.