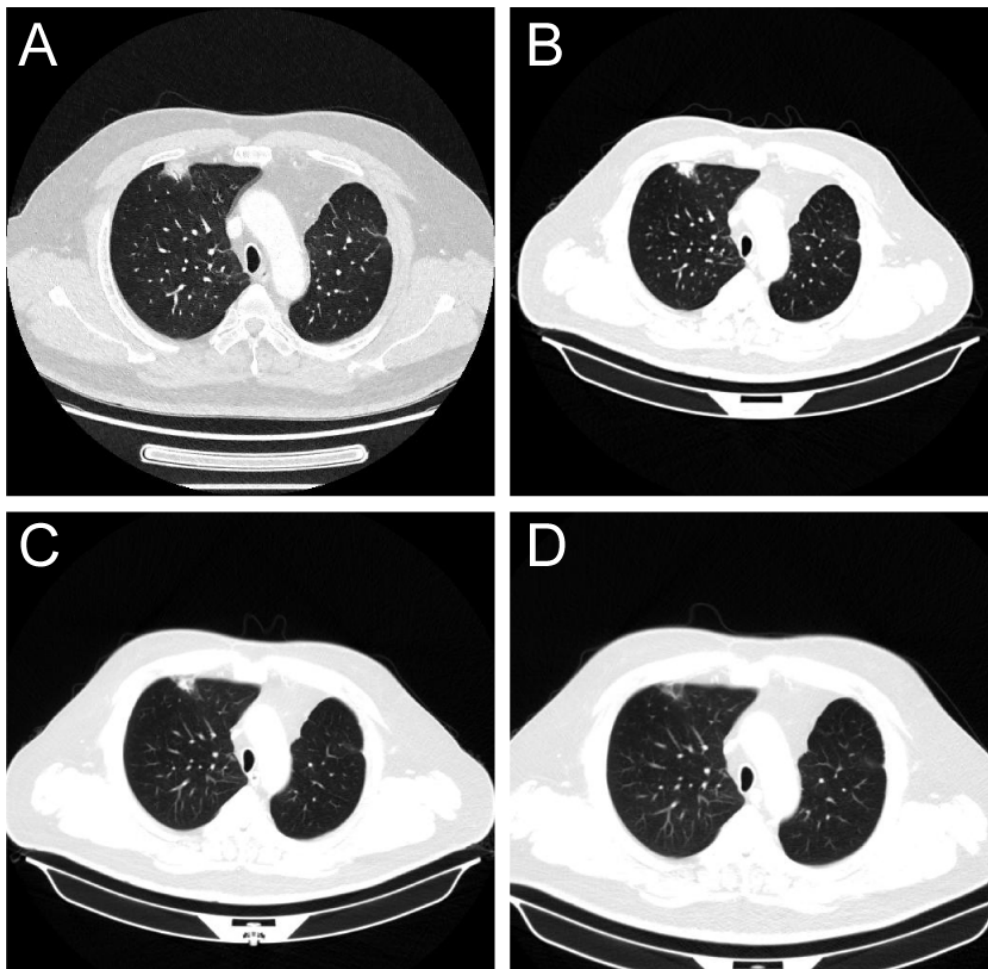
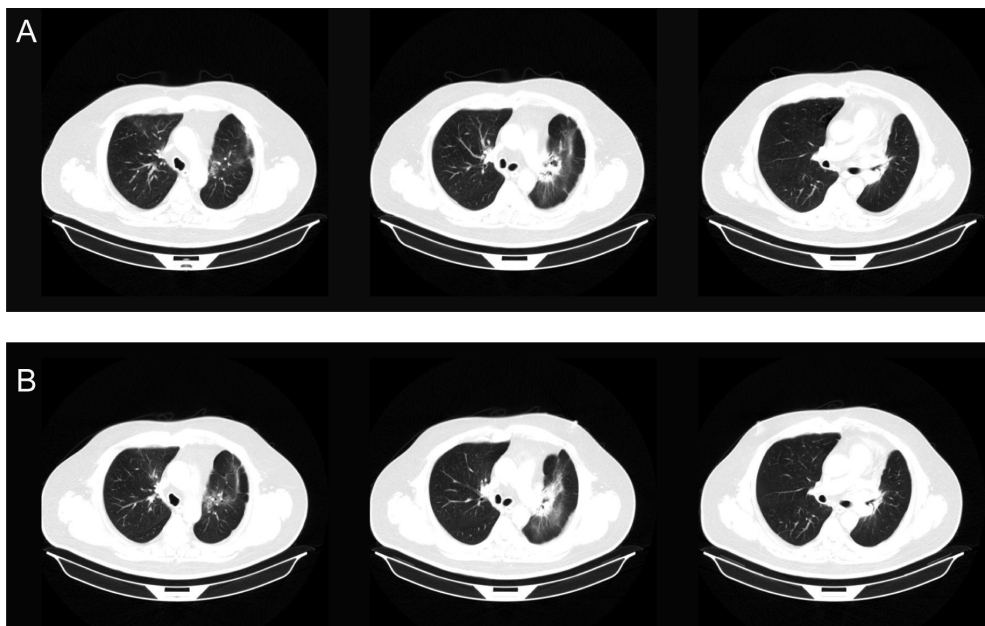


**Figure S1** The lung changes were corresponded with the high dose distribution of proton in the treatment plan. (A) Treatment dose plan of intensify modulated proton therapy (IMPT). (B) The main radiation induced lung injury (RILI) affected lung field.



**Figure S2** Follow up of radiation pneumonitis on right upper lobe (RUL). (A) A new ground glass opacity after intensifying modulated proton therapy (IMPT). (B-D) Computed tomography (CT) showed that the pneumonitis gradually absorbed during the treatment of steroids.



**Figure S3** Follow up of radiation pneumonitis on left upper lobe (LUL). (A) Computed tomography (CT) on October 25. (B) CT on December 20.