

Figure S1 The protein-protein interaction network was exported from the STRING database and visualized in Cytoscape v3.8.2 software.

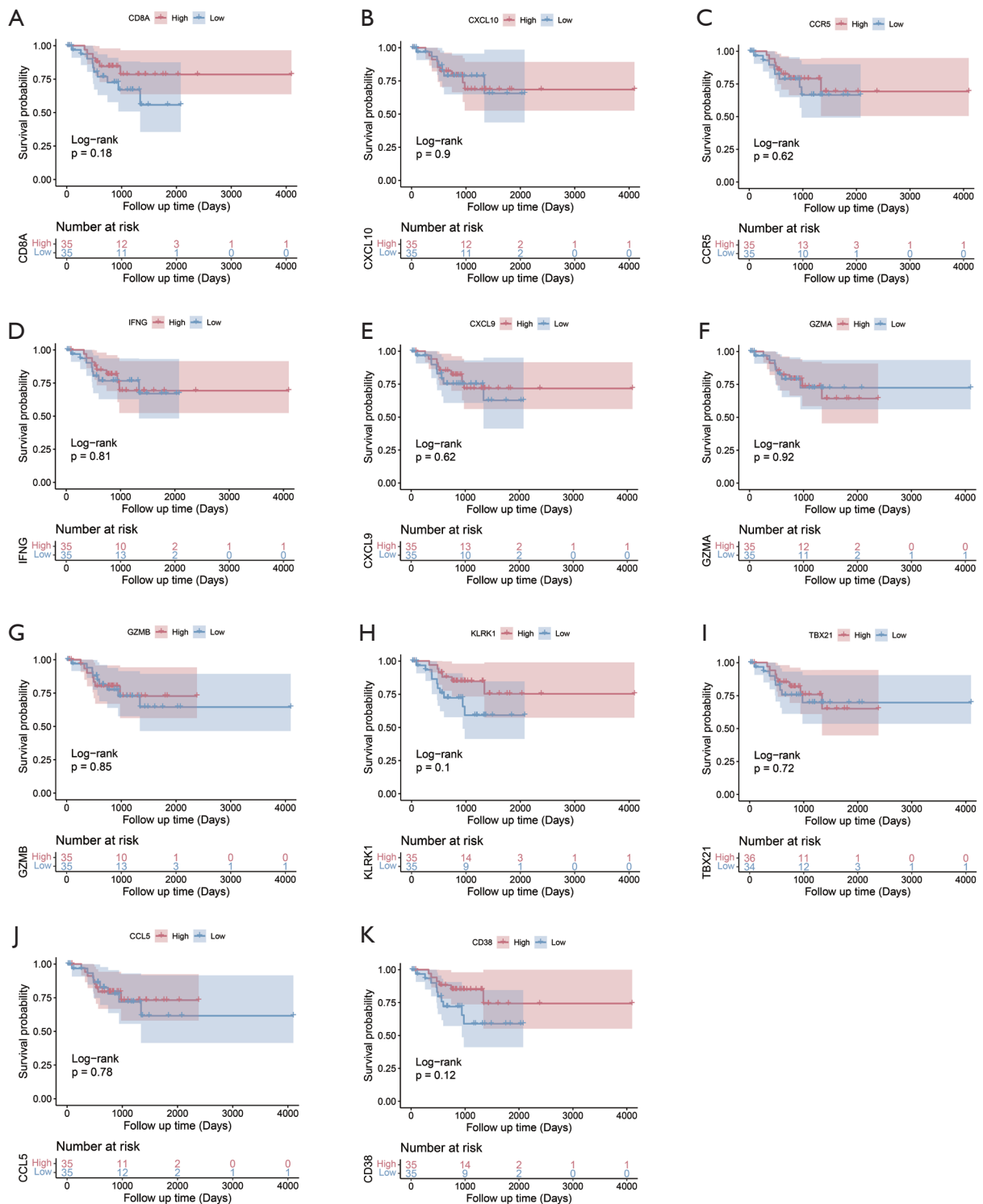


Figure S2 Kaplan-Meier plot of 11 hub genes in the EBV-positive group of the SYSUCC cohort. The expression of each gene was divided into a high expression group and a low expression group according to its median value. The red line represents the high expression group, and the blue line represents the low expression group. (A) *CD8A*. (B) *CXCL10*. (C) *CCR5*. (D) *IFNG*. (E) *CXCL9*. (F) *GZMA*. (G) *GZMB*. (H) *KLRK1*. (I) *TBX21*. (J) *CCL5*. (K) *CD38*.

Table S1 The clinicopathological characteristics in Sun Yat-sen University Cancer Center (SYSUCC) cohort

Variable	EBVaGC	EBVnGC	P value
Total	70	67	
Age, years			0.037
≤60	35	46	
>60	35	21	
Gender			<0.001
Male	61	39	
Female	9	28	
TNM stage			0.318
I-II	19	13	
III-IV	51	54	
Grade			<0.001
G1-G2	35	12	
G3	35	55	
Location			<0.001
Proximal	34	21	
Distal	19	39	
Whole	0	2	
Body	6	5	
Remnant	11	0	
Lauren classification			<0.001
Diffuse	6	34	
Intestine	20	17	
Mixed	43	1	
Unknown	1	15	

Table S2 Quantitative real-time polymerase chain reaction (RT-qPCR) primers used in this study

Name	Forward Primer	Reverse Primer
β -actin	TGGATCAGCAAGCAGGAGTA	TCGGCCACATTGTGAACTTT
CD8A	TCCTCCTATACCTCTCCCAAAC	GGAAGACCGGCACGAAGTG
IFNG	TCGGTAACTGACTTGAATGTCCA	TCGCTTCCCTGTTTTAGCTGC
CXCL10	GTGGCATTCAAGGAGTACCTC	TGATGGCCTTCGATTCTGGATT
CCR5	TTCTGGGCTCCCTACAACATT	TTGGTCCAACCTGTTAGAGCTA
GZMB	GCAGATGCAGACTTTTCCTTC	TCTCGTATCAGGAAGCCACC
CD38	AGACTGCCAAAGTGTATGGGA	GCAAGGTACGGTCTGAGTTCC
TBX21	GCCCACGATGAAACCTGAGA	GCTCCTTCATGCCCAAGACT
CCL5	TTTCTGTATGACTCCCGGC	AAGCCTCCCAAGCTAGGACA
GZMA	ATTCTTGGGGCTCACTCAATAAC	GGGTCATAGCATGGATAGGGAAA
CXCL9	ATTGGTGCCAGTTAGCCTC	CCACCGGACAGCACTCTAAA
KLRK1	CCTTGACCGAAAGTTACTGTGG	GGCTGGCATTGAGACATACAA

Table S3 Hub gene count in CytoHubba

Gene	Count
<i>CD8A</i>	9
<i>CXCL10</i>	9
<i>CCR5</i>	9
<i>IFNG</i>	9
<i>CXCL9</i>	8
<i>GZMA</i>	8
<i>GZMB</i>	8
<i>KLRK1</i>	8
<i>TBX21</i>	8
<i>CCL5</i>	6
<i>CD38</i>	5
<i>PRKCG</i>	4
<i>CD274</i>	3
<i>LAG3</i>	3
<i>PRKCQ</i>	3
<i>CALB1</i>	2
<i>IDO1</i>	2
<i>ABCG5</i>	1
<i>ABCG8</i>	1
<i>ALPP</i>	1
<i>CCL1</i>	1
<i>CD244</i>	1
<i>CKMT1A</i>	1
<i>CKMT1B</i>	1
<i>CX3CL1</i>	1
<i>FASLG</i>	1
<i>GBP4</i>	1
<i>HMGCS2</i>	1
<i>IKZF3</i>	1
<i>KLRC3</i>	1
<i>SLAMF7</i>	1
<i>SLC6A8</i>	1
<i>WARS</i>	1