

Figure S1 sensitivity analysis of ORR.

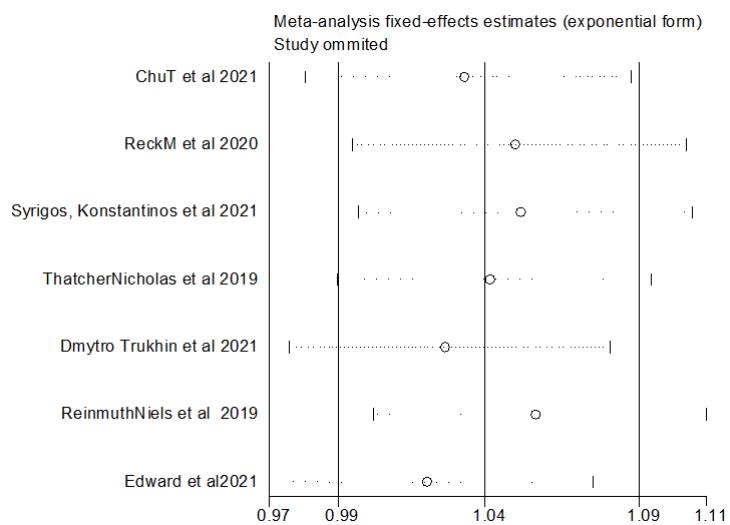


Figure S2 sensitivity analysis of PFS.

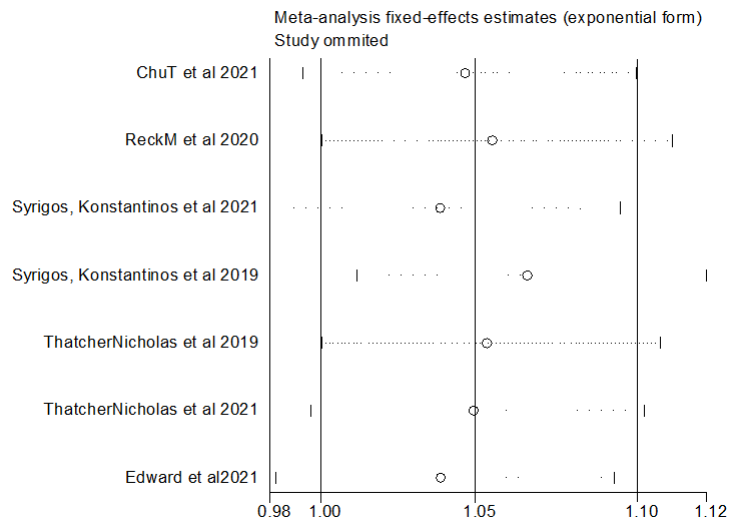


Figure S3 sensitivity analysis of OS.

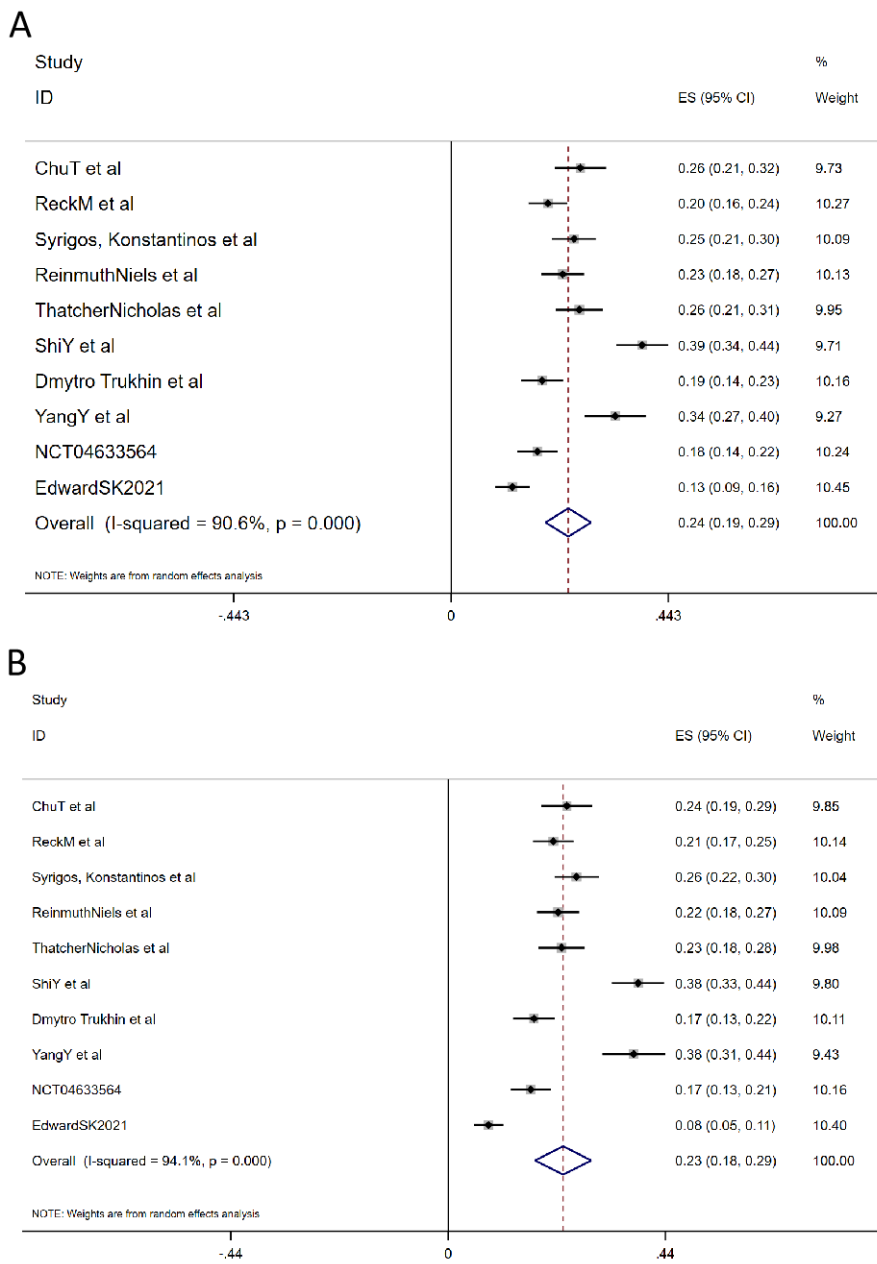


Figure S4 Incidence of serious AEs for biosimilar bevacizumab (A) and original bevacizumab (B).

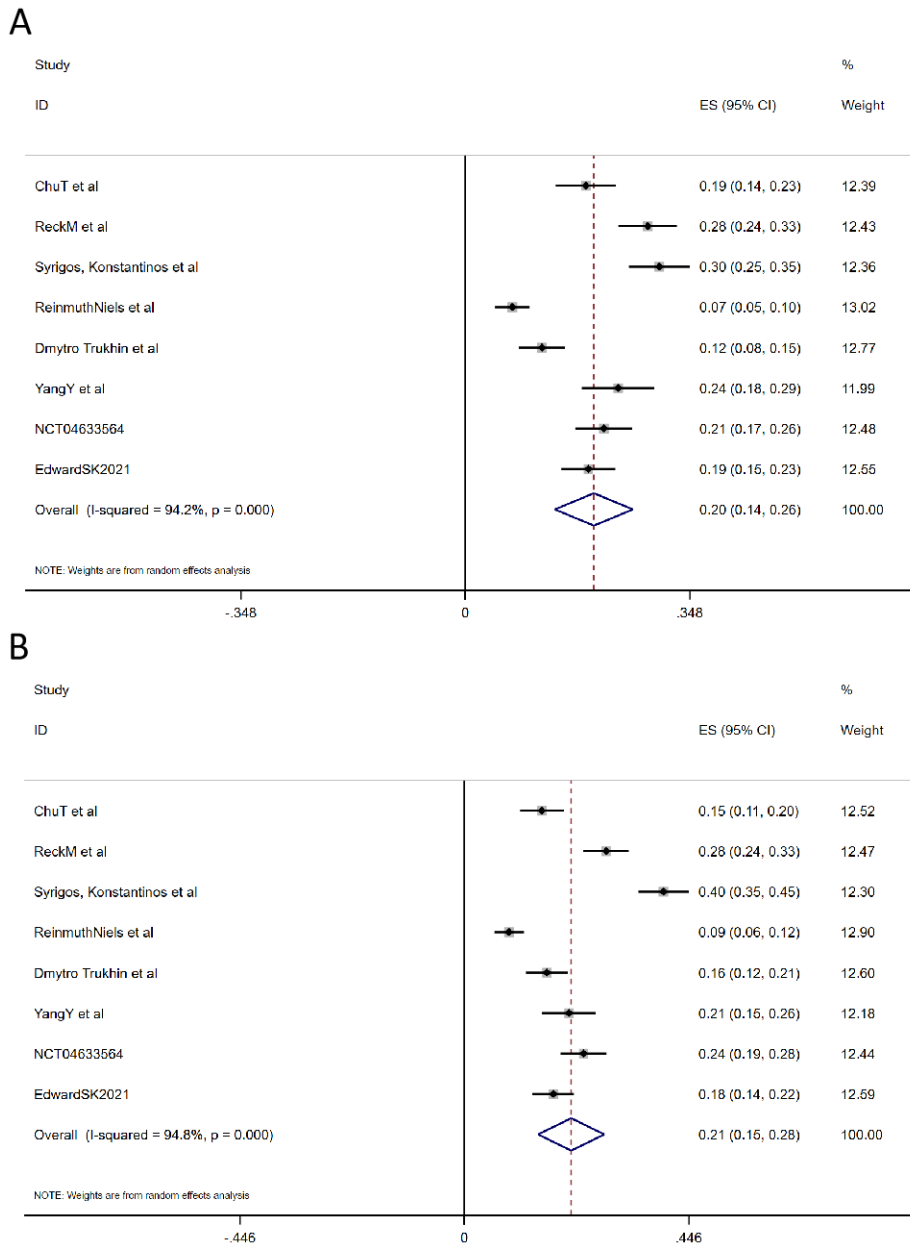
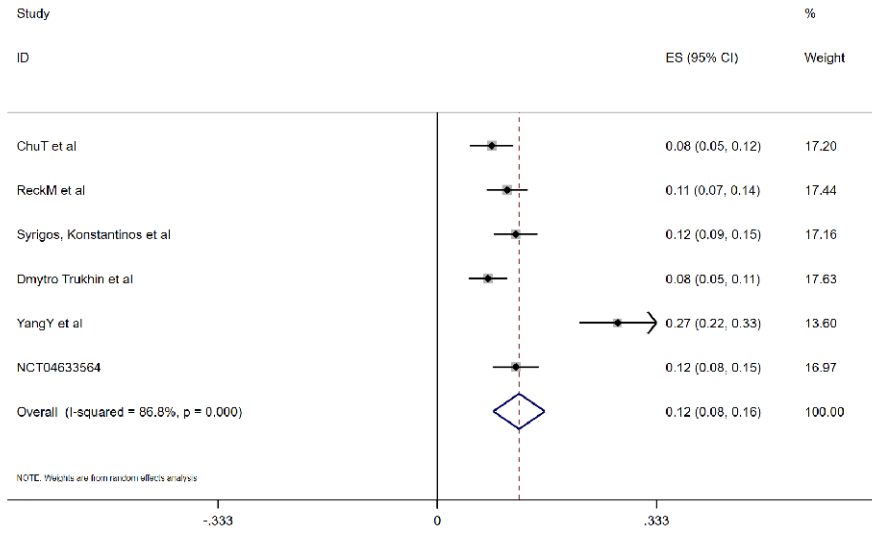


Figure S5 Incidence of neutropenia for biosimilar bevacizumab (A) and original bevacizumab (B).

A



B

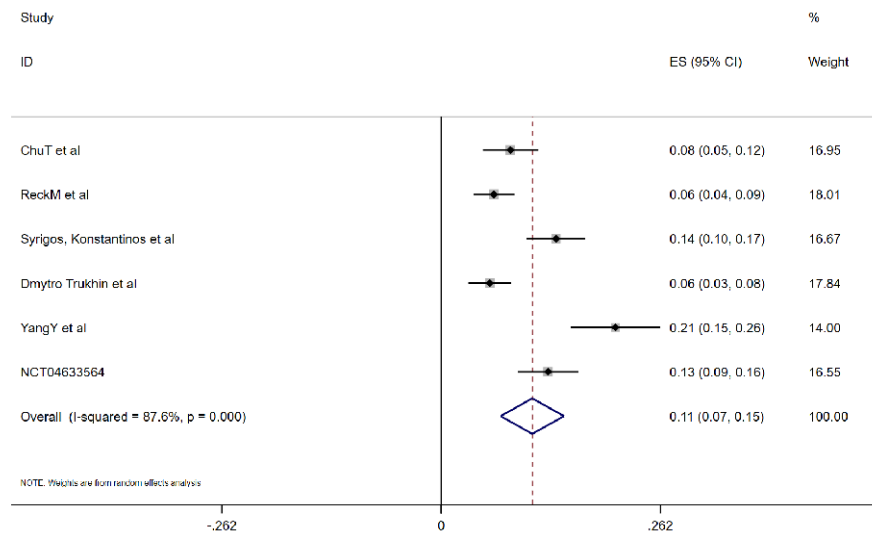
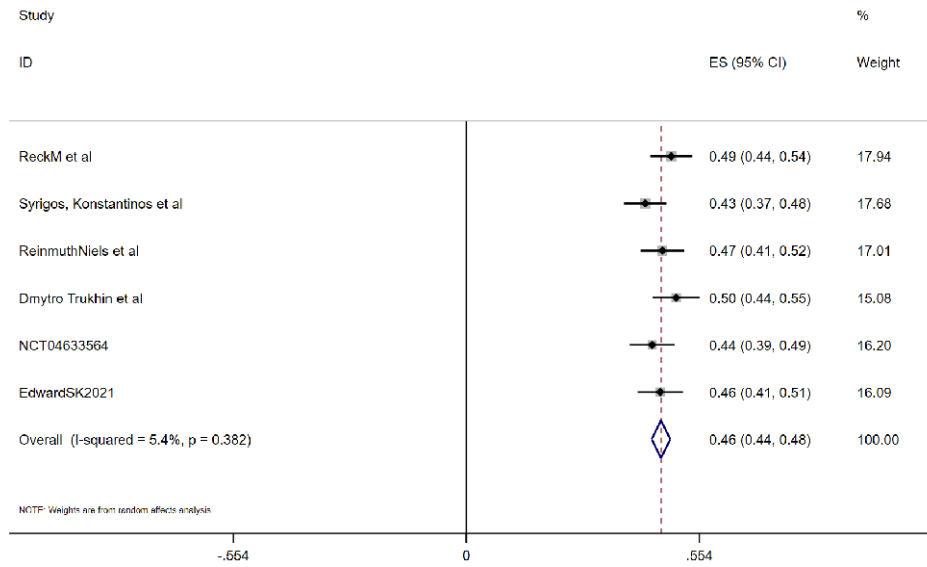


Figure S6 Incidence of leukopenia for biosimilar bevacizumab (A) and original bevacizumab (B).

A



B

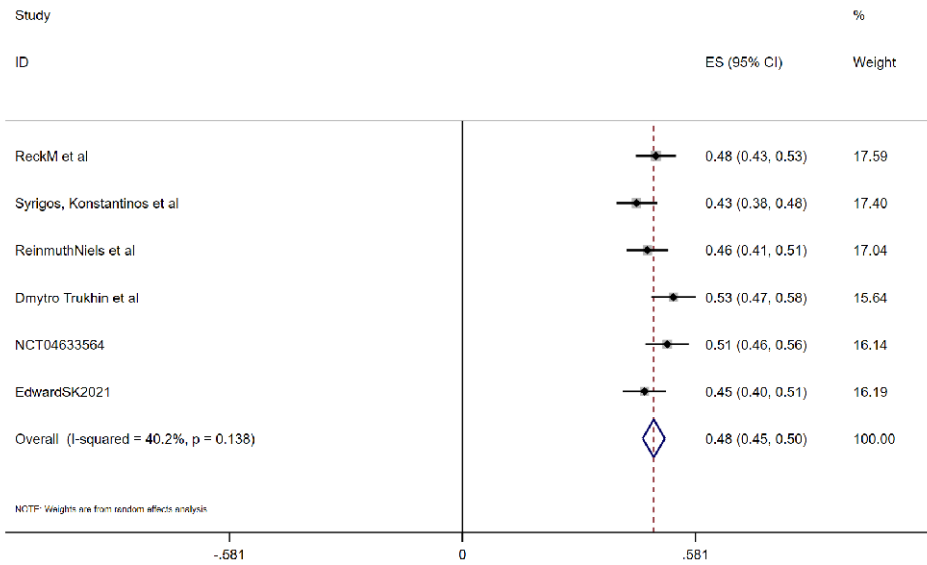


Figure S7 Incidence of alopecia biosimilar bevacizumab (A) and original bevacizumab (B).

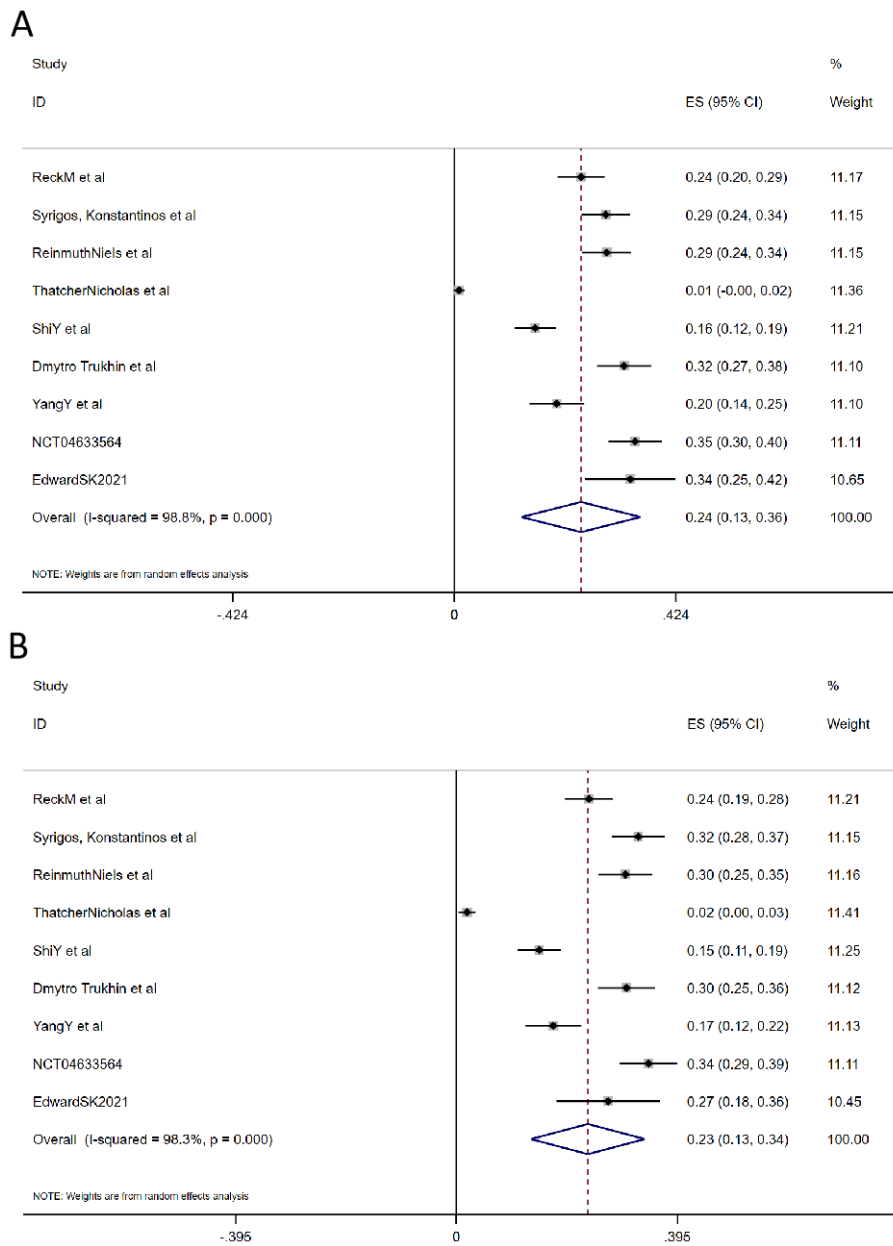
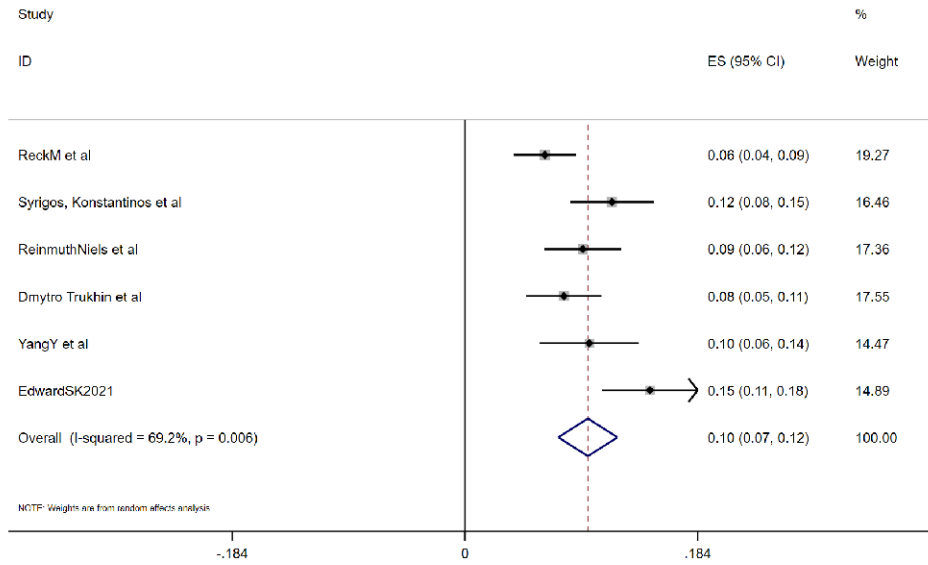


Figure S8 Incidence of anemia biosimilar bevacizumab (A) and original bevacizumab (B).

A



B

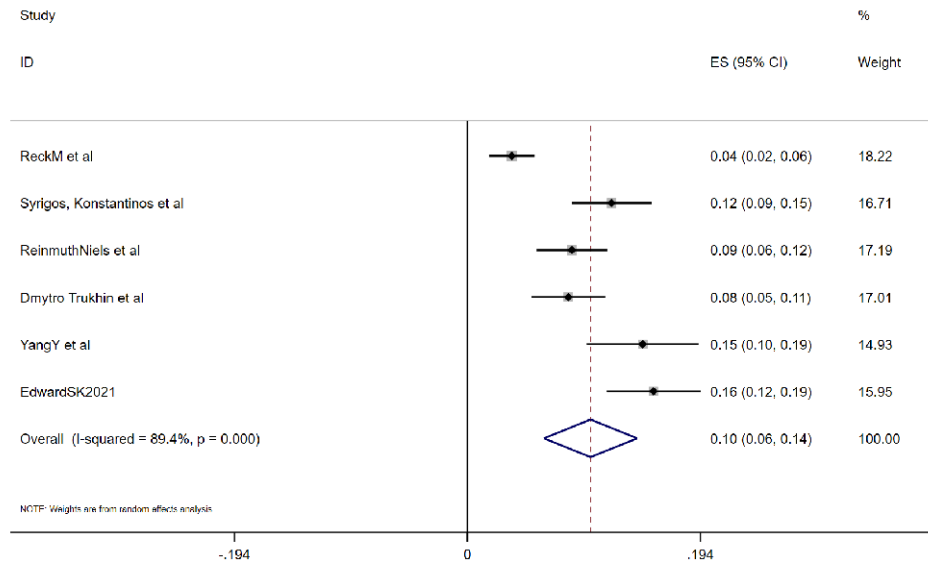
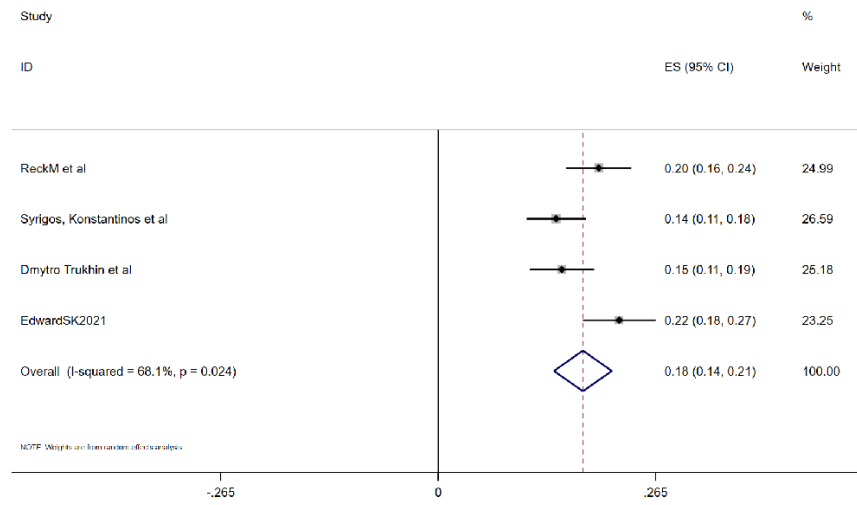


Figure S9 Incidence of hypertension biosimilar bevacizumab (A) and original bevacizumab (B).

A



B

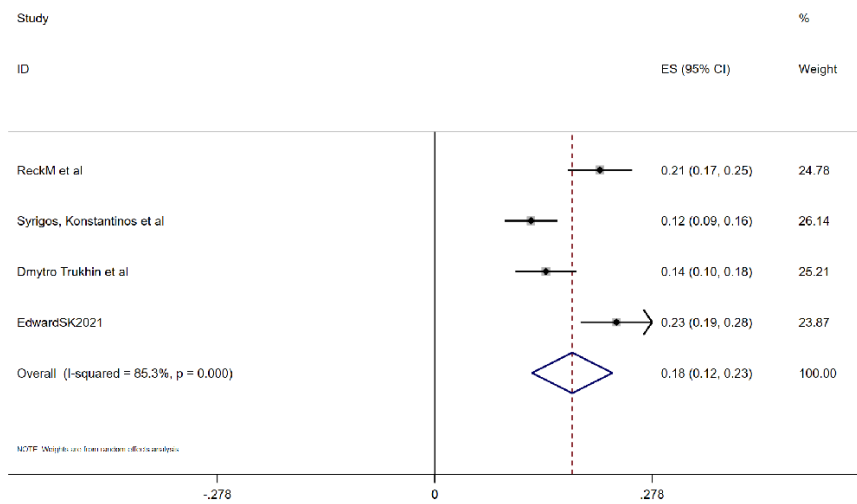


Figure S10 Incidence of nausea biosimilar bevacizumab (A) and original bevacizumab (B).

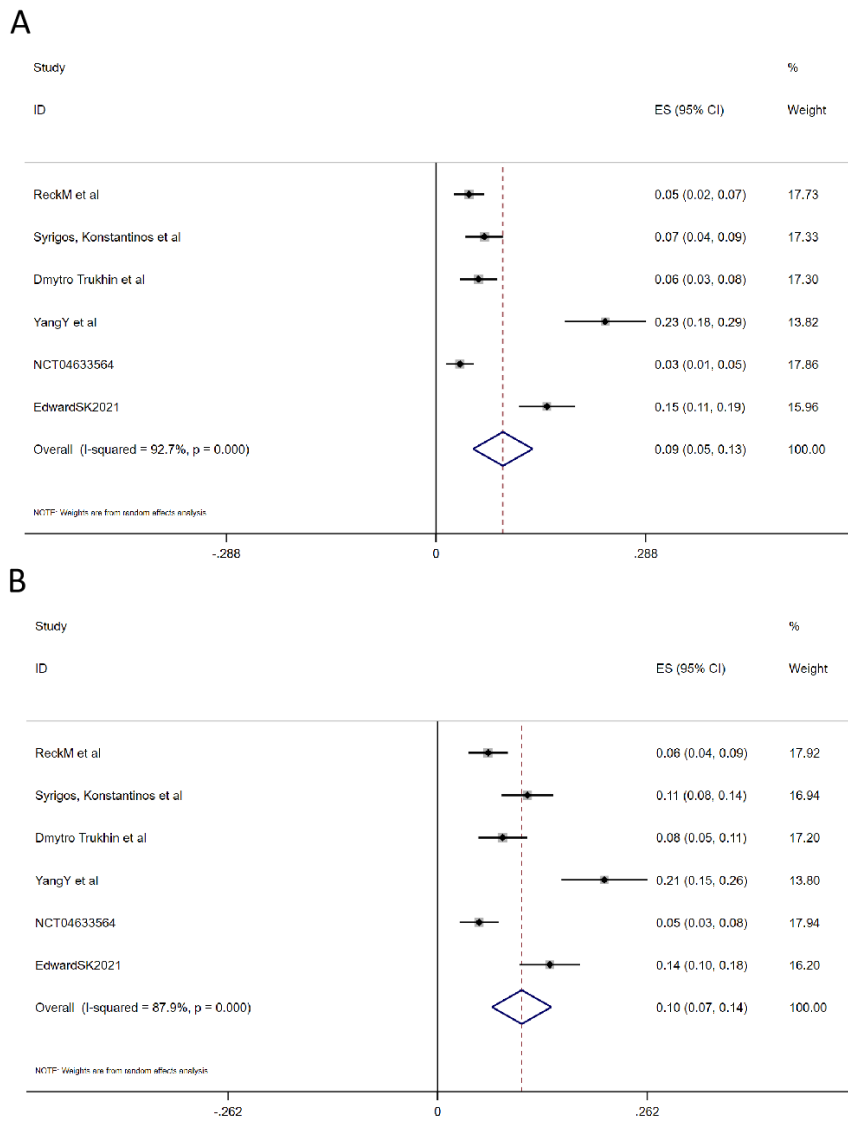


Figure S11 Incidence of proteinuria biosimilar bevacizumab (A) and original bevacizumab (B).