

Table S1 CT values of five candidate internal reference

Internal reference	Mean \pm SD	CV%
GAPDH	27.137 \pm 1.909	3.643
18S	17.161 \pm 0.415	0.173
TUB	28.864 \pm 2.110	4.408
ACTB	24.100 \pm 0.736	0.542
U6	23.857 \pm 1.118	1.251

SD, standard deviation; CT, computed tomography; CV, coefficient of variation; GAPDH, glyceraldehyde-3 phosphate dehydrogenase; TUB, tubulin; ACTB, beta actin.

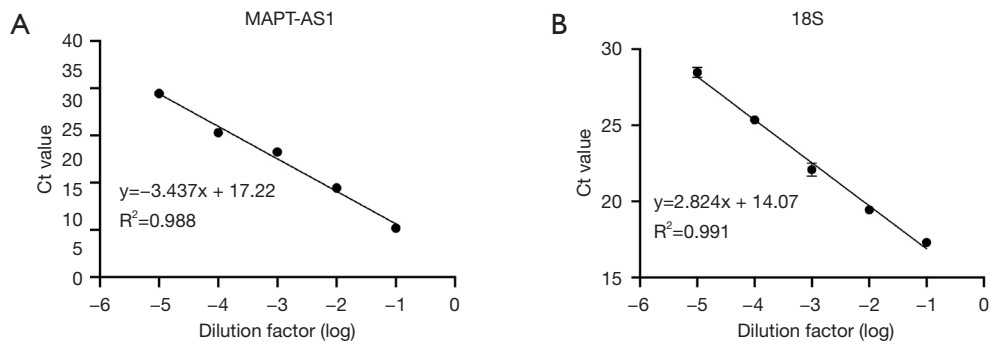


Figure S1 Linear analysis of MAPT-AS1 and internal reference 18S.

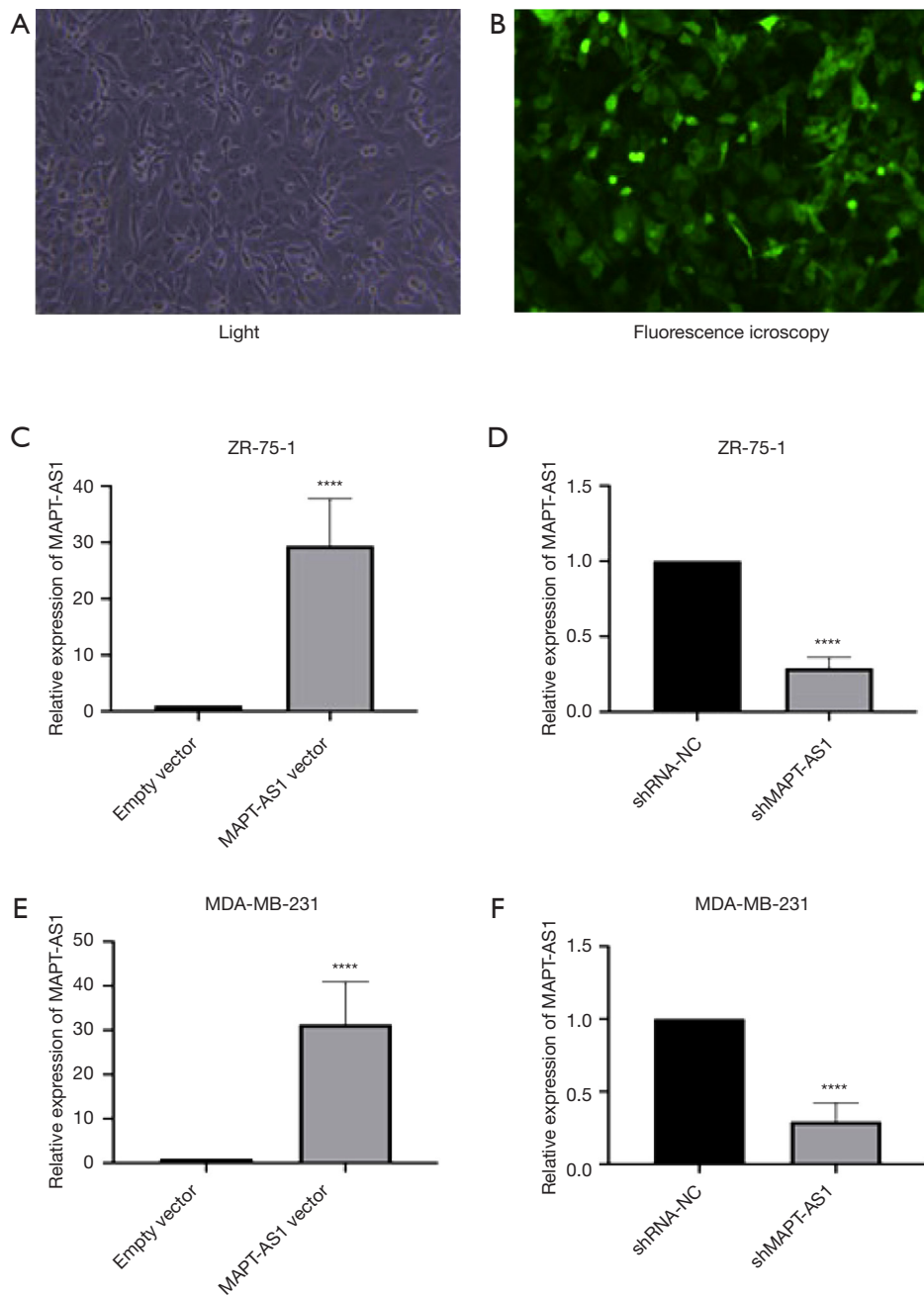


Figure S2 Efficiency verification of BC (breast cancer) cell line transfected with MAPT-AS1 plasmid. Cells were captured under optical field (A) and fluorescence field (B) ($\times 40$). MAPT-AS1 expressions were detected in ZR-75-1 cell line transfected with MAPT-AS1 vector (C) and shMAPT-AS1 (D). MAPT-AS1 expressions were detected in MDA-MB-231 cell line transfected with MAPT-AS1 vector (E) and shMAPT-AS1 (F).