

Figure S1 Coexpression analysis for DRD4 and estrogen receptor (ESR1) (A), PGR (B), or HER2 (ERBB2) (C). Correlation between gene expression was assessed by Spearman and Pearson's tests. DR, dopamine receptor; PGR, progesterone receptor.

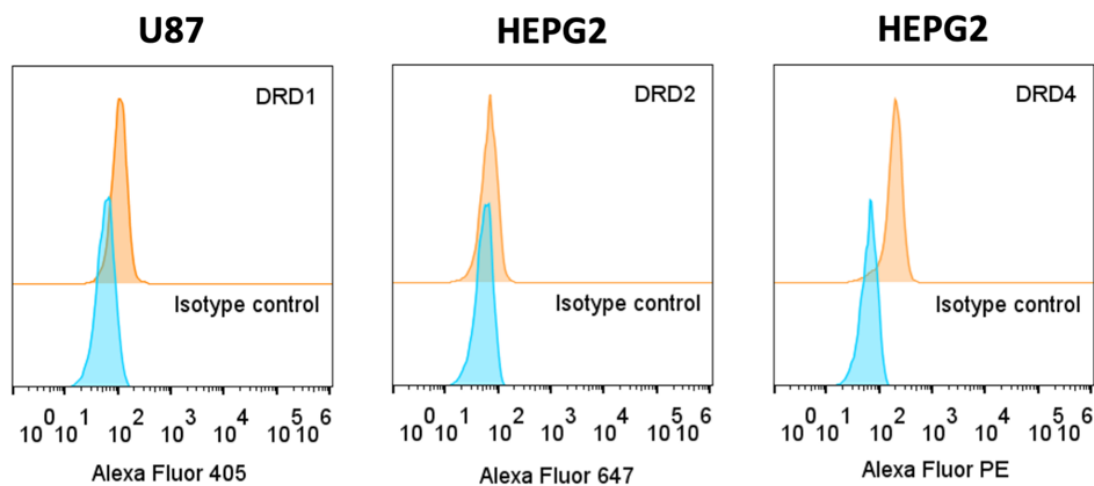


Figure S2 Positive controls for membrane staining with anti-DRD1, anti-DRD2, and anti-DRD4 antibodies (see main text for details). DR, dopamine receptor; PE, phycoerythrin.

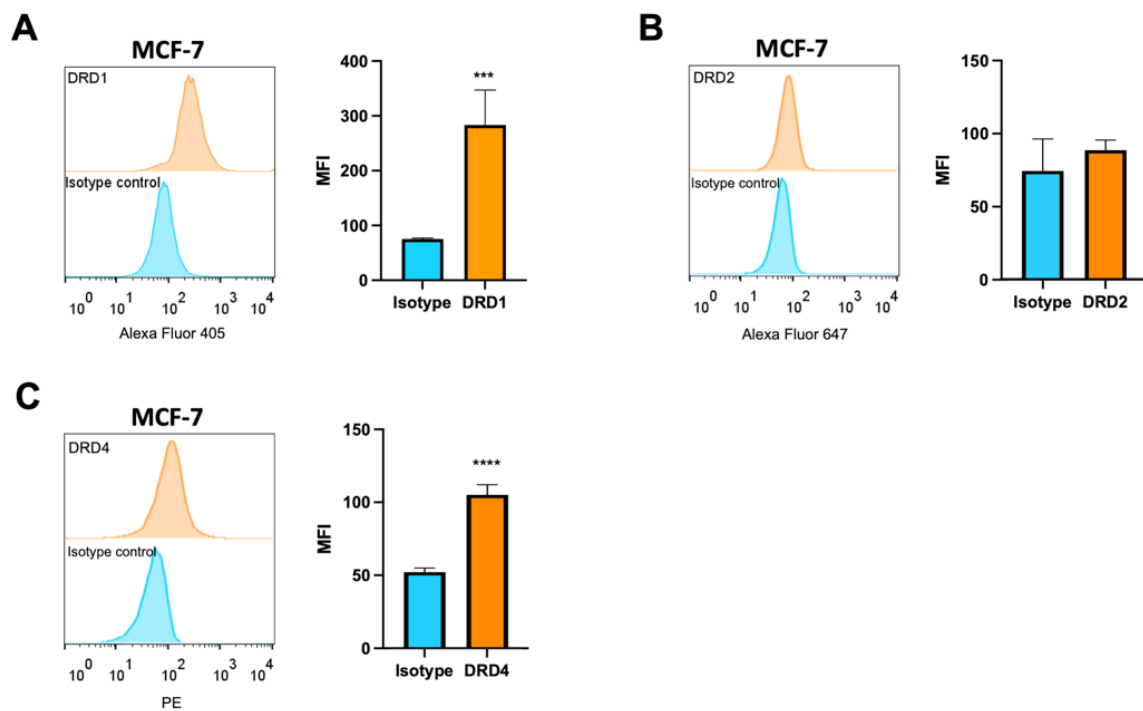


Figure S3 Detection of DRD1 (A), DRD2 (B), or DRD4 (C) in fixed/permeabilized MCF-7 breast cancer cells. Graph shows MFI (average \pm SEM) from 2 or 3 independent experiments. ***, $P < 0.001$; ****, $P < 0.0001$ (Student's t -test). DR, dopamine receptor; MFI, mean fluorescence intensity; SEM, standard error of the mean; PE, phycoerythrin.