

Figure S1 Tumor response to neoadjuvant immunotherapy in the surgery and non-surgery patients until final follow-up. The vertical coordinate is the ratio. The horizontal coordinate is tumor remission. pCR (CR), pathological complete response (complete response) (neoadjuvant therapy with no residual live tumor cells on pathology or in drained lymph nodes and no suspicious lesions on imaging); MPR, major pathological response (neoadjuvant therapy with $\leq 10\%$ residual live tumor cells on pathology or imaging); PR, partial response (neoadjuvant tumor foci with $>10\%$ residual live tumor cells at the pathological level but with a size smaller than that measured in the pretreatment image); PD, progressive disease (neoadjuvant tumor foci size larger than that in the pretreatment image).

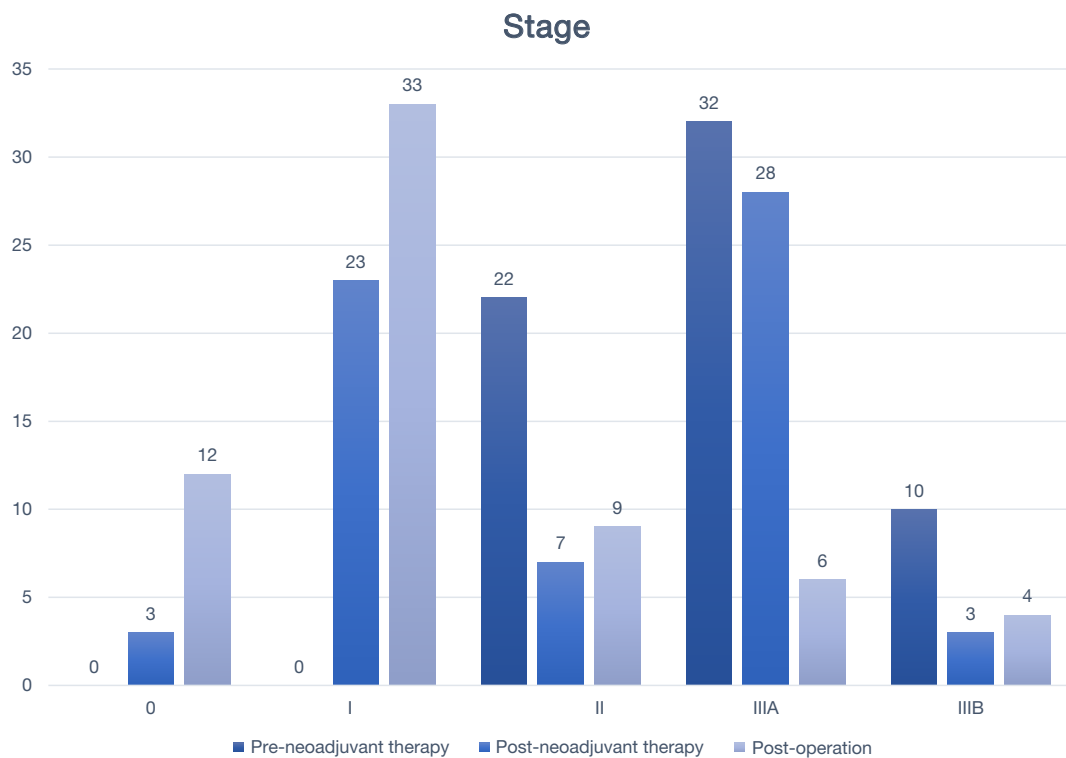


Figure S2 Staging of patients with NSCLC before and after neoadjuvant immunotherapy and surgery. The vertical coordinate is the number. The horizontal coordinate is the stage. NSCLC, non-small cell lung cancer.

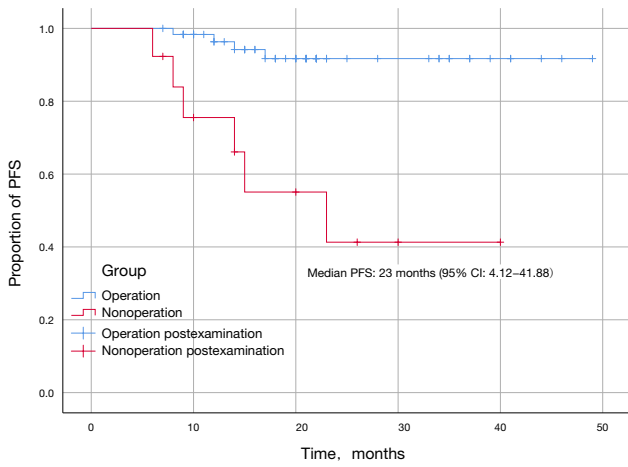


Figure S3 Analysis of PFS in patients who did and did not undergo surgery. PFS, progression-free survival.

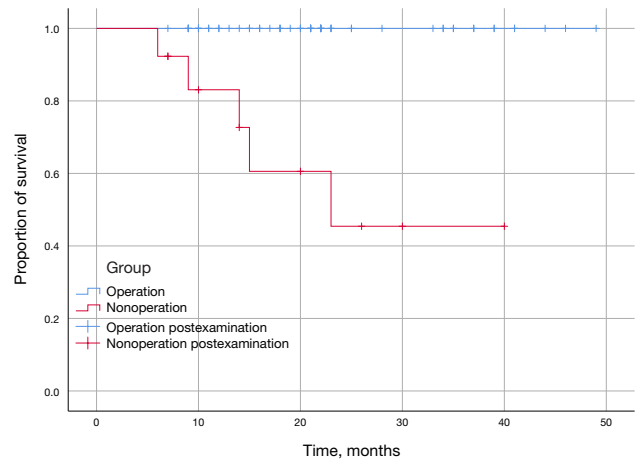


Figure S4 Analysis of OS in the operation versus nonoperation. OS, overall survival.