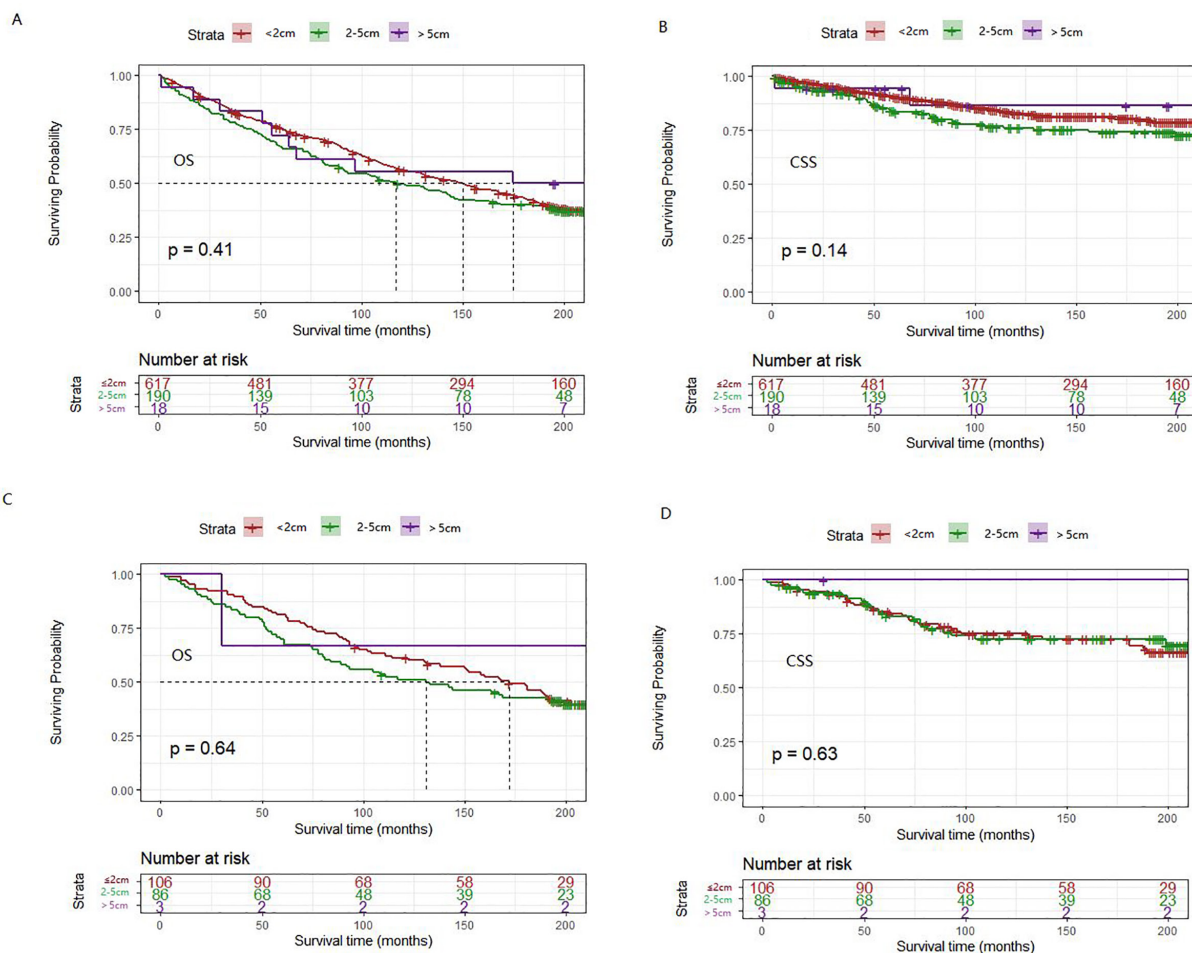
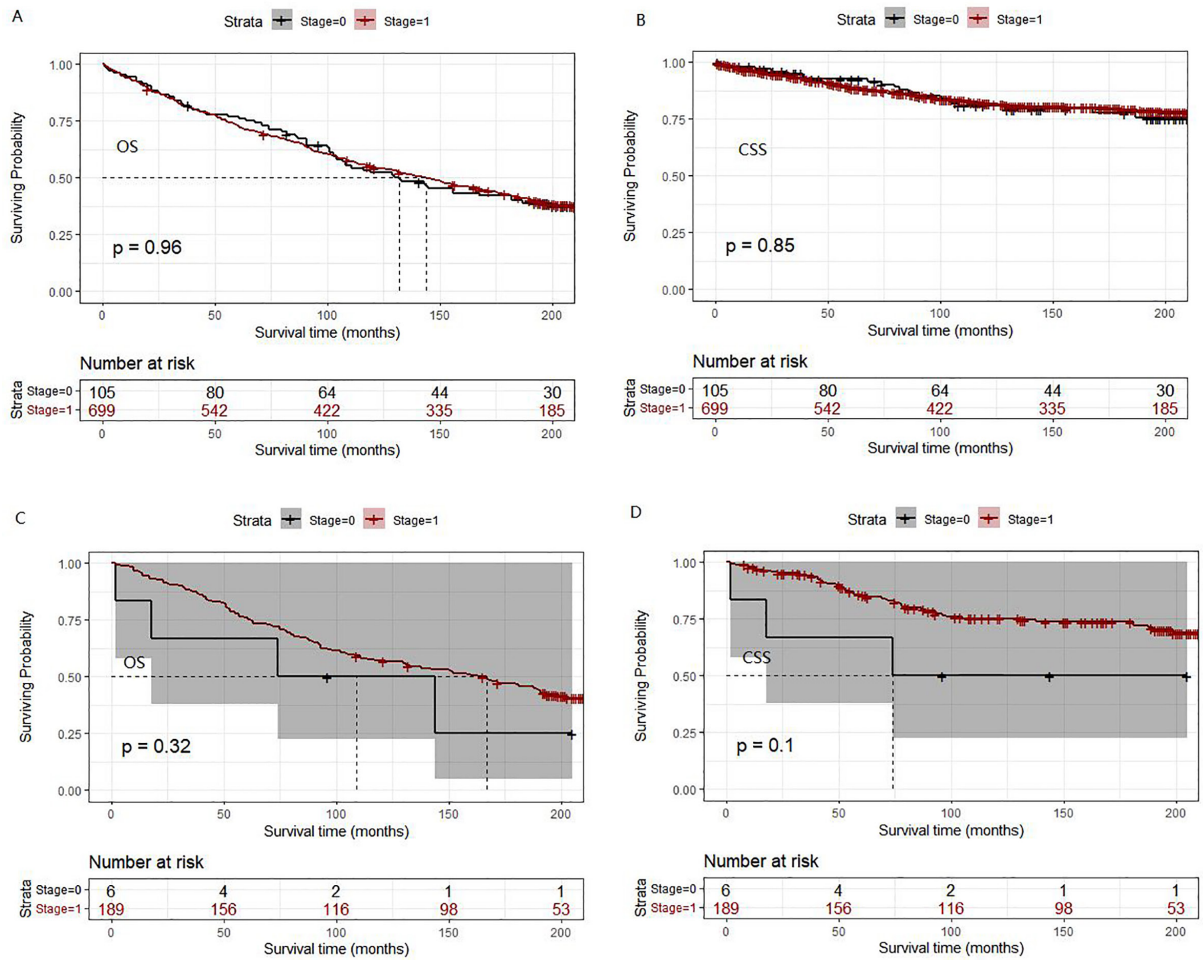


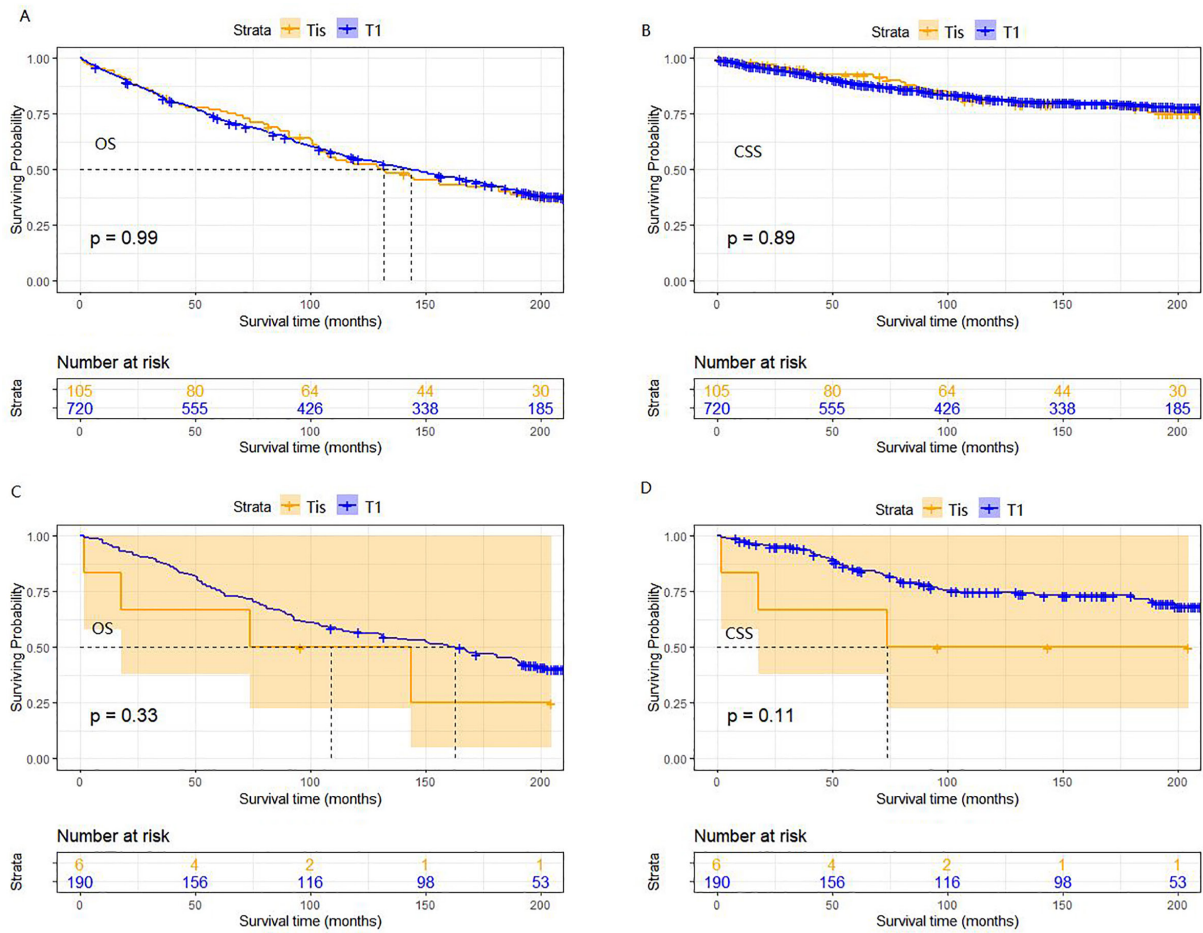
**Figure S1** The survival rates of the two groups in rectal cancer patients after PSM. (A) The OS rates of ER and ER + CRT groups (P=0.61); (B) the CSS rates of ER and ER + CRT groups (P=0.34). OS, overall survival; CSS, cancer specific survival; PSM, propensity score matching; ER, endoscopic resection; CRT, chemoradiotherapy; rx, treatment.



**Figure S2** Subgroup analysis considering tumor size. (A) The OS rate of ER + CRT vs. ER group before PSM (P=0.41); (B) the CSS rate of ER + CRT vs. ER group before PSM (P=0.14); (C) the OS rate of ER + CRT vs. ER group after PSM (P=0.64); (D) the CSS rate of ER + CRT vs. ER group after PSM (P=0.63). OS, overall survival; CSS, cancer specific survival; ER, endoscopic resection; CRT, chemoradiotherapy; PSM, propensity score matching.



**Figure S3** Subgroup analysis considering tumor stage. (A) The OS rate of ER + CRT *vs.* ER group before PSM (P=0.96); (B) the CSS rate of ER + CRT *vs.* ER group before PSM (P=0.85); (C) the OS rate of ER + CRT *vs.* ER group after PSM (P=0.32); (D) the CSS rate of ER + CRT *vs.* ER group after PSM (P=0.10). OS, overall survival; CSS, cancer specific survival; ER, endoscopic resection; CRT, chemoradiotherapy; PSM, propensity score matching.



**Figure S4** Subgroup analysis considering invasion depth. (A) The OS rate of ER + CRT *vs.* ER group before PSM (P=0.99); (B) the CSS rate of ER + CRT *vs.* ER group before PSM (P=0.89); (C) the OS rate of ER + CRT *vs.* ER group after PSM (P=0.33); (D) the CSS rate of ER + CRT *vs.* ER group after PSM (P=0.11). OS, overall survival; CSS, cancer specific survival; ER, endoscopic resection; CRT, chemoradiotherapy; PSM, propensity score matching.