

Table S1 Univariate Cox regression analysis of the 36 ferroptosis-related differentially expressed genes

Gene	HR	HR.95L	HR.95H	P value
NCF2	1.057289	1.010108	1.106674	0.016768
PLIN4	0.651374	0.455301	0.931886	0.018974
RGS4	1.169456	1.010794	1.353022	0.035353
TFRC	1.006202	1.000355	1.012084	0.037595
CA9	0.98761	0.975058	1.000323	0.056064
ALOX12B	0.969053	0.936308	1.002942	0.073061
TRIB3	1.015438	0.996426	1.034812	0.11214
SOCS1	0.980616	0.95328	1.008735	0.174767
IL33	1.043833	0.980547	1.111204	0.178835
CDO1	1.070379	0.967989	1.1836	0.184914
MIOX	0.829106	0.617846	1.112603	0.211705
ALOXE3	0.949488	0.87182	1.034076	0.233888
SLC7A11	1.012205	0.991687	1.033149	0.245623
SLC7A5	1.001122	0.999116	1.003131	0.273247
BNIP3	1.018146	0.983481	1.054033	0.308901
CAV1	1.001619	0.998329	1.004921	0.335163
PANX1	1.017273	0.98183	1.053996	0.343887
TF	0.931349	0.803393	1.079684	0.345579
BID	0.97622	0.927797	1.02717	0.353827
HBA1	2.243931	0.28248	17.82507	0.444636
STMN1	0.993971	0.975996	1.012277	0.516069
PRKAA2	1.105206	0.782757	1.560483	0.569802
HELLS	0.939473	0.751768	1.174045	0.582988
LPIN1	0.94666	0.762081	1.175944	0.620348
SLC3A2	1.001309	0.995859	1.006788	0.63857
MUC1	1.00305	0.989806	1.016471	0.653374
PTGS2	1.003587	0.98618	1.021302	0.688329
HIF1A	1.001103	0.99419	1.008065	0.755101
TP63	1.000883	0.995307	1.006489	0.756873
GPT2	0.994818	0.939711	1.053158	0.858195
RRM2	0.99793	0.962169	1.03502	0.91138
SLC2A1	0.999938	0.998317	1.001561	0.940309
FADS2	1.000852	0.975669	1.026685	0.947769
AURKA	1.000966	0.942809	1.06271	0.974785
ALOX15	0.99984	0.967814	1.032926	0.992323
XBP1	NA	NA	NA	NA

Table S2 Univariate Cox regression analysis for assessment of the prognostic values of different clinicopathological characteristics and the risk score

id	HR	HR.95L	HR.95H	P value
gender	3.36731	1.707808	6.639372	0.000456
age	1.0043	0.969453	1.0404	0.811769
T	1.96414	0.244011	15.81013	0.525826
T	1.789906	0.237831	13.47075	0.571856
T	1.181128	0.157172	8.876017	0.871486
N	0.785713	0.320262	1.927627	0.598415
N	1.437796	0.76201	2.712901	0.262318
N	10.25725	2.89175	36.38321	0.000314
M	8.225131	1.90066	35.59436	0.004815
tumor_status	0.203148	0.087356	0.472421	0.000214
tumor_status	0.970006	0.428177	2.197483	0.941815
Grade	2.868213	0.684405	12.02015	0.149508
Grade	1.321477	0.290888	6.003349	0.718128
Grade	1.387203	0.19289	9.976304	0.745075
Stage	0.973471	0.543702	1.742948	0.92791
Margin	0.899745	0.11132	7.272168	0.92107
Margin	0.488189	0.222707	1.070144	0.073347
Margin	1.919356	0.693119	5.315004	0.20962
Risk_Score	3.299837	1.854508	5.871598	4.89E-05

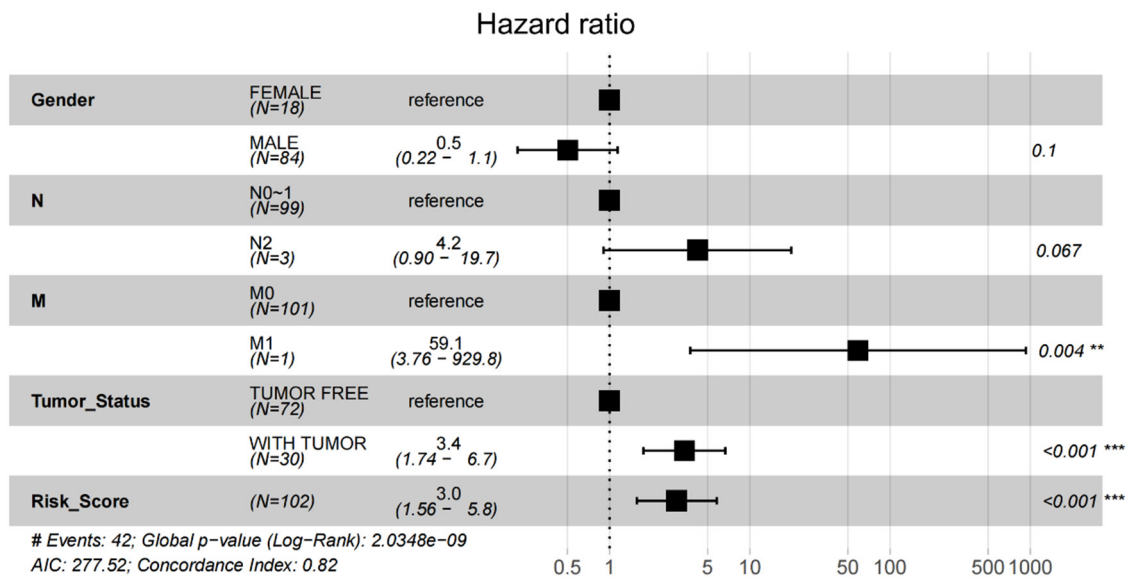


Figure S1 The independent prognostic factors for LSCC. Evaluation of the independency of the risk score and other factors for predicting the prognosis of LSCC using multivariate Cox regression analysis. LSCC, laryngeal squamous cell carcinoma.