

Figure S1 The survival curve of the five genes (i.e., FOXP3, IFNB1, IL6, and LY96, TLR4).

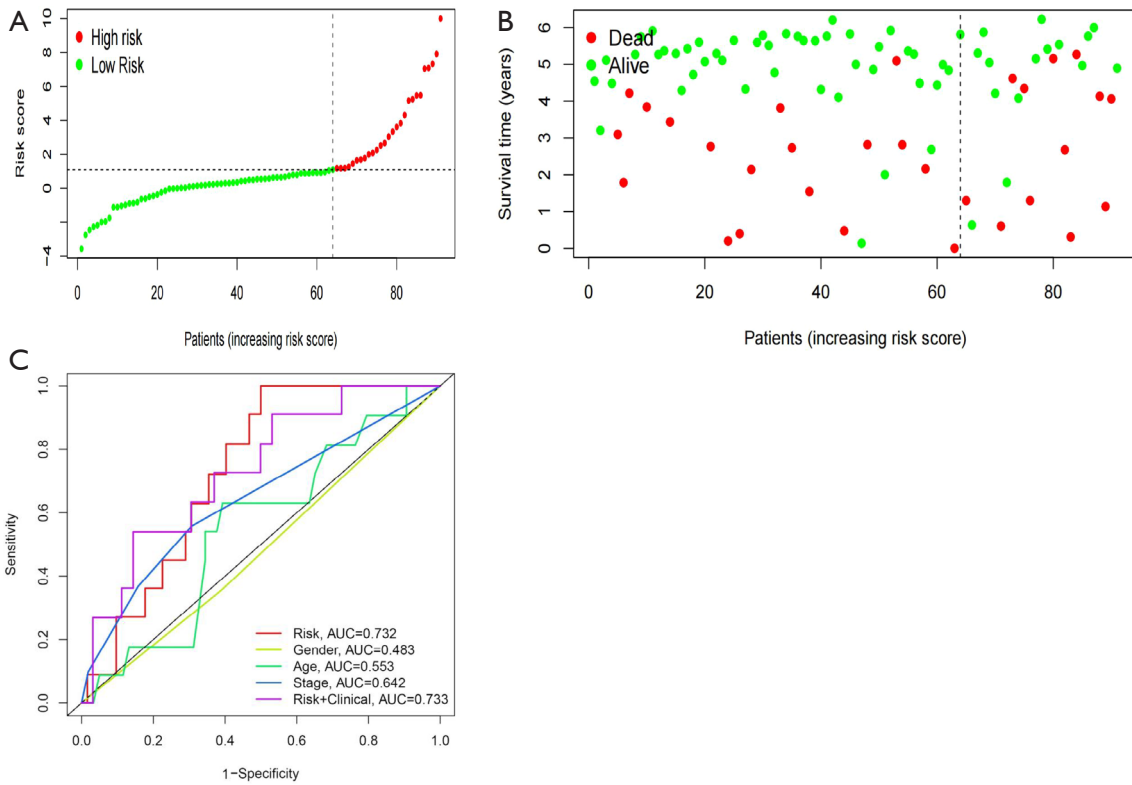
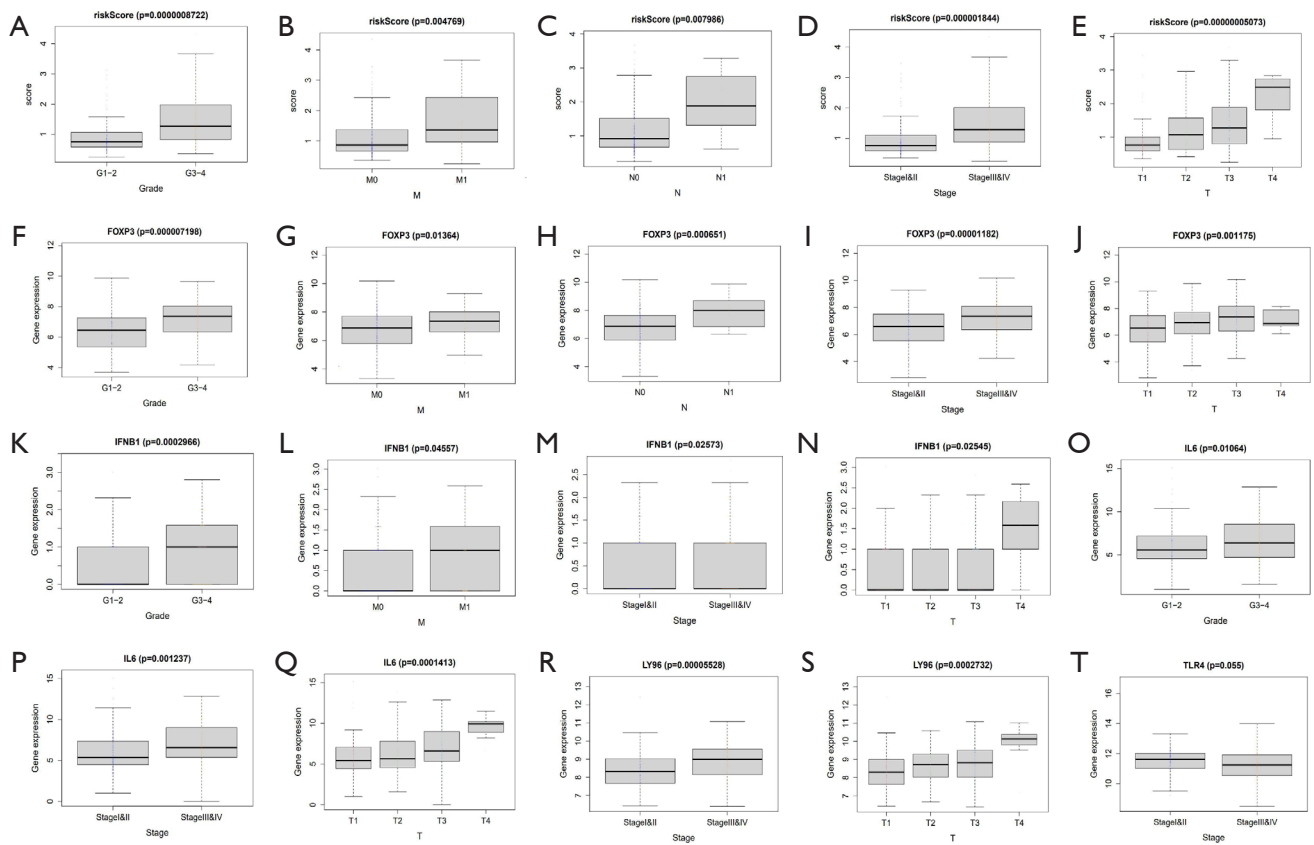


Figure S2 The difference between the groups with different risks and the constructed prognosis model was verified using data from the ICGC database. ICGC, International Cancer Genome Consortium.



Figures S3 The correlation of the predictor characteristics (the expression of the five genes and risk score) and clinical characteristics.