

Figure S1 Overview of study design.

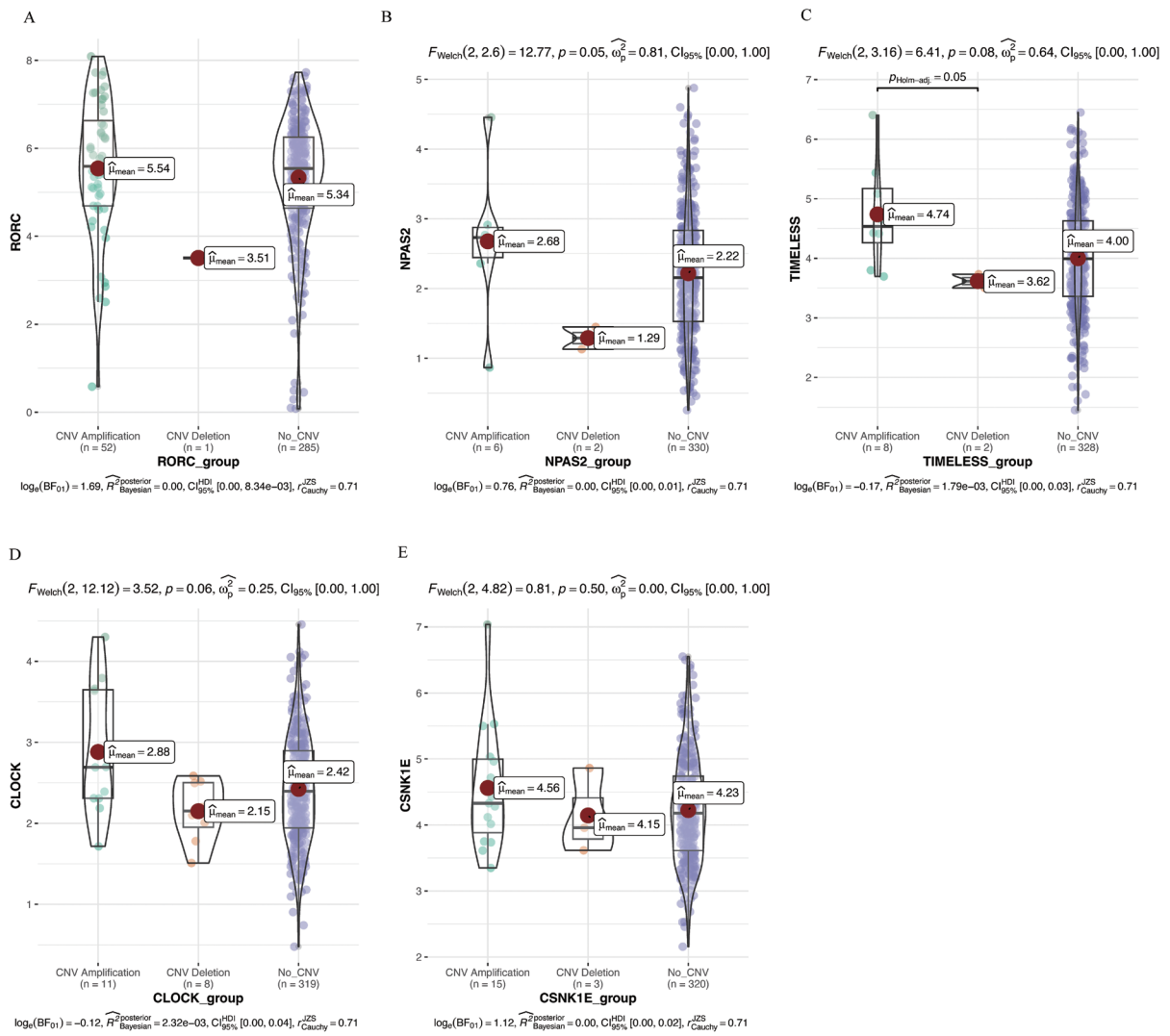


Figure S2 Relationship between copy number variation alteration and expression of circadian genes.

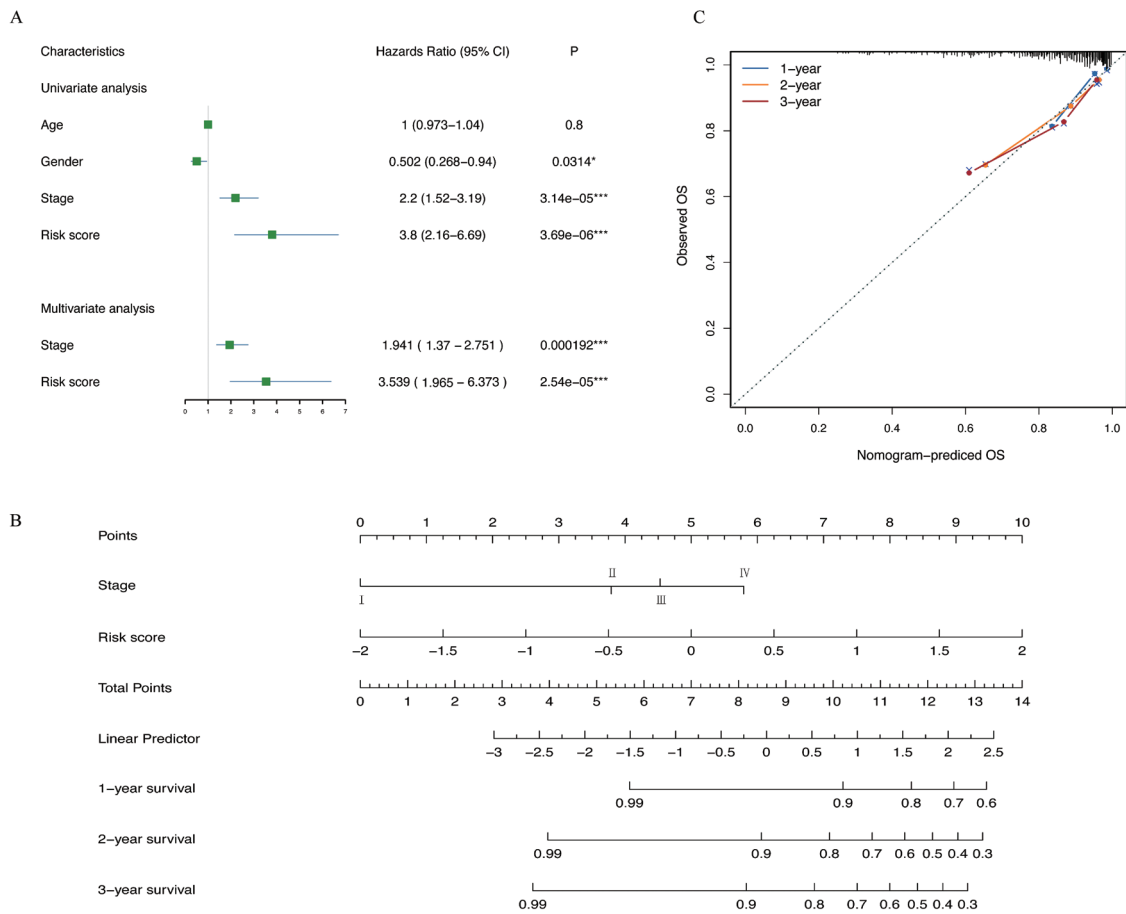


Figure S3 Validation of the nomogram for predicting the OS of HCC in the validation cohort. (A) Univariate and multivariate Cox regression analysis identified prognostic factors. (B) The nomogram of a prognostic model for HCC. (C) Calibration curves of the nomogram. *, $P < 0.05$; ***, $P < 0.001$.