

Appendix 1 The example of search strategy in PubMed

Search strategy in PubMed

PubMed — May 6, 2024 — **206** results

#1 Search: ((testis OR (testicle)) OR (testicular), **172,769** results

“teste”[All Fields] OR “testi”[All Fields] OR “testis”[MeSH Terms] OR “testis”[All Fields] OR “testes”[All Fields] OR “inferior colliculi”[MeSH Terms] OR (“inferior”[All Fields] AND “colliculi”[All Fields]) OR “inferior colliculi”[All Fields] OR (“testis”[MeSH Terms] OR “testis”[All Fields] OR “testicle”[All Fields] OR “testicles”[All Fields] OR “testicular”[All Fields]

#2 Search: (((cancer) OR (carcinoma)) OR (tumor)) OR (neoplasm), **5,769,239** results

“cancer s”[All Fields] OR “cancerated”[All Fields] OR “canceration”[All Fields] OR “cancerization”[All Fields] OR “cancerized”[All Fields] OR “cancerous”[All Fields] OR “neoplasms”[MeSH Terms] OR “neoplasms”[All Fields] OR “cancer”[All Fields] OR “cancers”[All Fields] OR “carcinoma”[MeSH Terms] OR “carcinoma”[All Fields] OR “carcinomas”[All Fields] OR “carcinoma s”[All Fields] OR “cysts”[MeSH Terms] OR “cysts”[All Fields] OR “cyst”[All Fields] OR “neurofibroma”[MeSH Terms] OR “neurofibroma”[All Fields] OR “neurofibromas”[All Fields] OR “tumor s”[All Fields] OR “tumoral”[All Fields] OR “tumorous”[All Fields] OR “tumour”[All Fields] OR “neoplasms”[MeSH Terms] OR “neoplasms”[All Fields] OR “tumor”[All Fields] OR “tumour s”[All Fields] OR “tumoural”[All Fields] OR “tumourous”[All Fields] OR “tumours”[All Fields] OR “tumors”[All Fields] OR “neoplasm s”[All Fields] OR “neoplasms”[MeSH Terms] OR “neoplasms”[All Fields] OR “neoplasm”[All Fields]

#3 Search: (((((((programmed cell death ligand 1) OR (programmed death ligand 1)) OR (PD-L1)) OR (PDL1)) OR (B7 homolog 1)) OR (B7-H1)) OR (B7H1)) OR (CD274), **53,836** results

((“apoptosis”[MeSH Terms] OR “apoptosis”[All Fields] OR (“programmed”[All Fields] AND “cell”[All Fields] AND “death”[All Fields]) OR “programmed cell death”[All Fields]) AND (“ligand s”[All Fields] OR “liganded”[All Fields] OR “liganding”[All Fields] OR “ligands”[MeSH Terms] OR “ligands”[All Fields] OR “ligand”[All Fields]) AND “1”[All Fields]) OR (“b7 h1 antigen”[MeSH Terms] OR (“B7-H1”[All Fields] AND “antigen”[All Fields]) OR “b7 h1 antigen”[All Fields] OR “programmed death ligand 1”[All Fields]) OR “PD-L1”[All Fields] OR “PDL1”[All Fields] OR (“b7 h1 antigen”[MeSH Terms] OR (“B7-H1”[All Fields] AND “antigen”[All Fields]) OR “b7 h1 antigen”[All Fields] OR “b7 homolog 1”[All Fields]) OR “B7-H1”[All Fields] OR “B7H1”[All Fields] OR “CD274”[All Fields]

#4 Search: (#1) AND (#2) AND (#3), **206** results

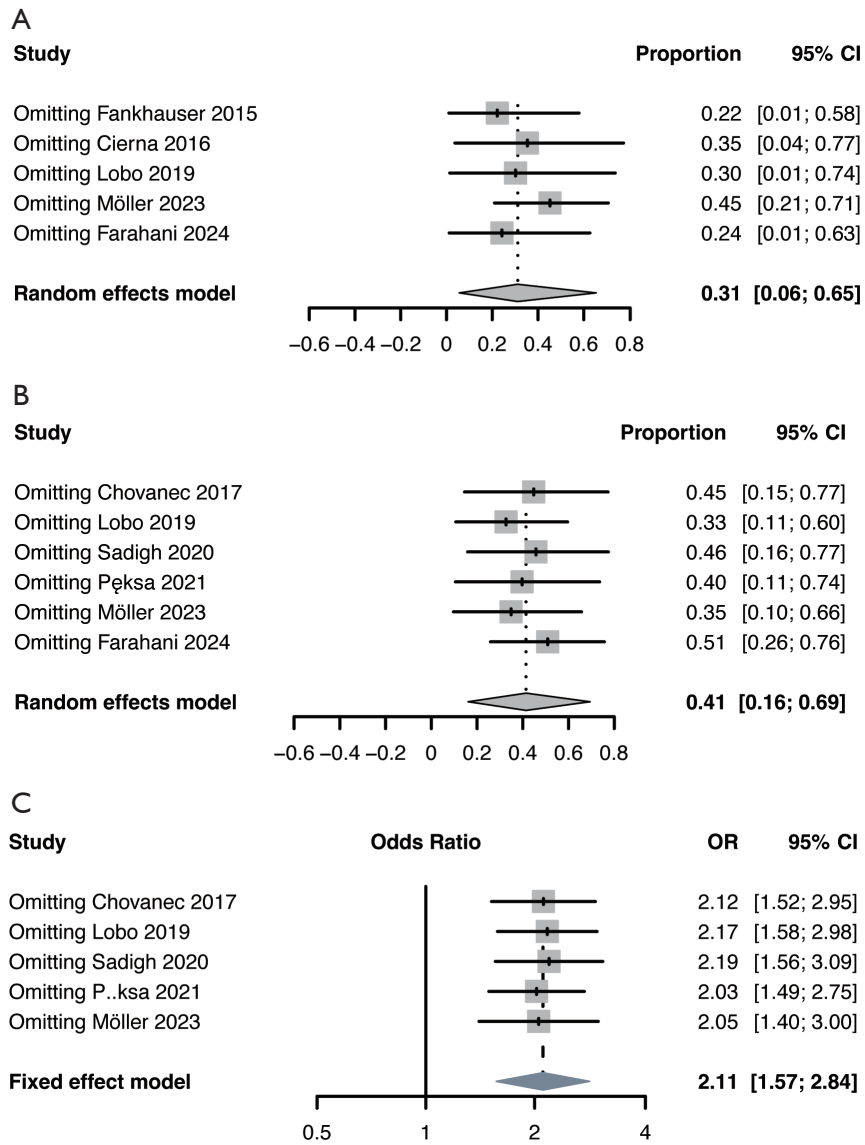


Figure S1 Sensitivity analysis by using data from *Figure 2A,2B* analysis (A,B) and *Figure 4B* analysis (C). Axis represents the proportion of PD-L1 positive expression in TGCT. CI, confidence interval; OR, odds ratio.