

Supplementary**Table S1** Differential analysis of cell adhesion-related pathways in two clusters of differential expression of m⁵C regulators

Pathway	LogFC	<i>t</i>	AveExpr	P value
Cytokine-cytokine receptor interaction	-0.16196	-0.00389	-9.37677	199E-19
Wnt signaling pathway	-0.23423	0.01348	-6.51917	165E-10
MAPK signaling pathway	0.062457	0.004033	4.24067	2.63E-05
Actin binding	0.050517	0.003888	3.384926	0.000765
Focal adhesion	-0.05199	0.001442	-2.68443	0.007493
Integrin binding	0.062623	0.003874	2.574798	0.010301
Tight junction	0.020722	0.009876	1.35289	0.176669
Regulation of actin cytoskeleton	-0.01534	-0.0058	-0.77599	0.438102
Cell-substrate adhesion	0.004211	0.003562	0.222486	0.824022

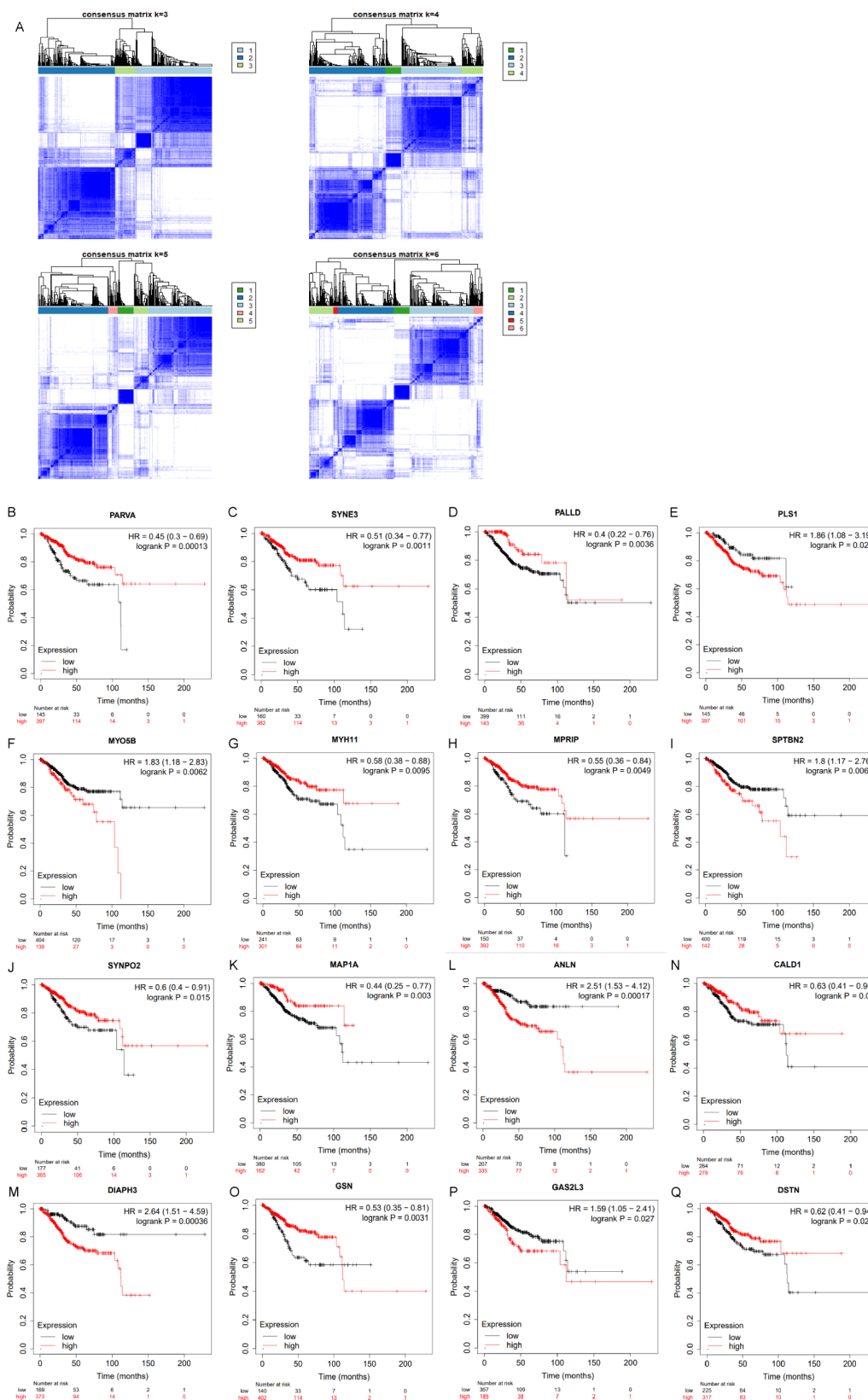


Figure S1 (A) consensus matrix at k=3–6. (B-Q) Kaplan-Meier overall survival curves for the remaining sixteen representative genes.

Table S2 Univariate Cox analysis of 14 m⁵C regulators in UCEC

Characteristics	Total (N)	Univariate analysis		Multivariate analysis	
		HR (95% CI)	P value	HR (95% CI)	P value
NOP2	551	1.233 (0.839–1.814)	0.287		
NSUN2	551	1.997 (1.340–2.974)	<0.001	1.594 (0.935–2.718)	0.087
NSUN3	551	1.584 (0.928–2.703)	0.092	1.183 (0.568–2.464)	0.654
NSUN4	551	1.711 (1.037–2.823)	0.035	1.015 (0.546–1.886)	0.962
NSUN5	551	1.390 (0.901–2.145)	0.137		
NSUN6	551	1.230 (0.788–1.921)	0.363		
NSUN7	551	0.968 (0.711–1.318)	0.837		
ALKBH1	551	0.869 (0.544–1.388)	0.557		
TRDMT1	551	1.395 (0.855–2.276)	0.183		
TET1	551	1.386 (0.963–1.995)	0.079	1.065 (0.631–1.798)	0.813
TET2	551	0.931 (0.621–1.396)	0.728		
TET3	551	1.492 (1.056–2.107)	0.023	1.066 (0.630–1.803)	0.812
ALYREF	551	1.572 (1.090–2.268)	0.015	1.217 (0.762–1.944)	0.411
YBX1	551	1.305 (1.017–1.674)	0.037	1.095 (0.791–1.515)	0.585

UCEC, uterine corpus endometrial carcinoma.