

Figure S1 Light microscope images ($\times 40$ magnification) for immunohistochemical high protein expression of FXR1 in breast tissue.

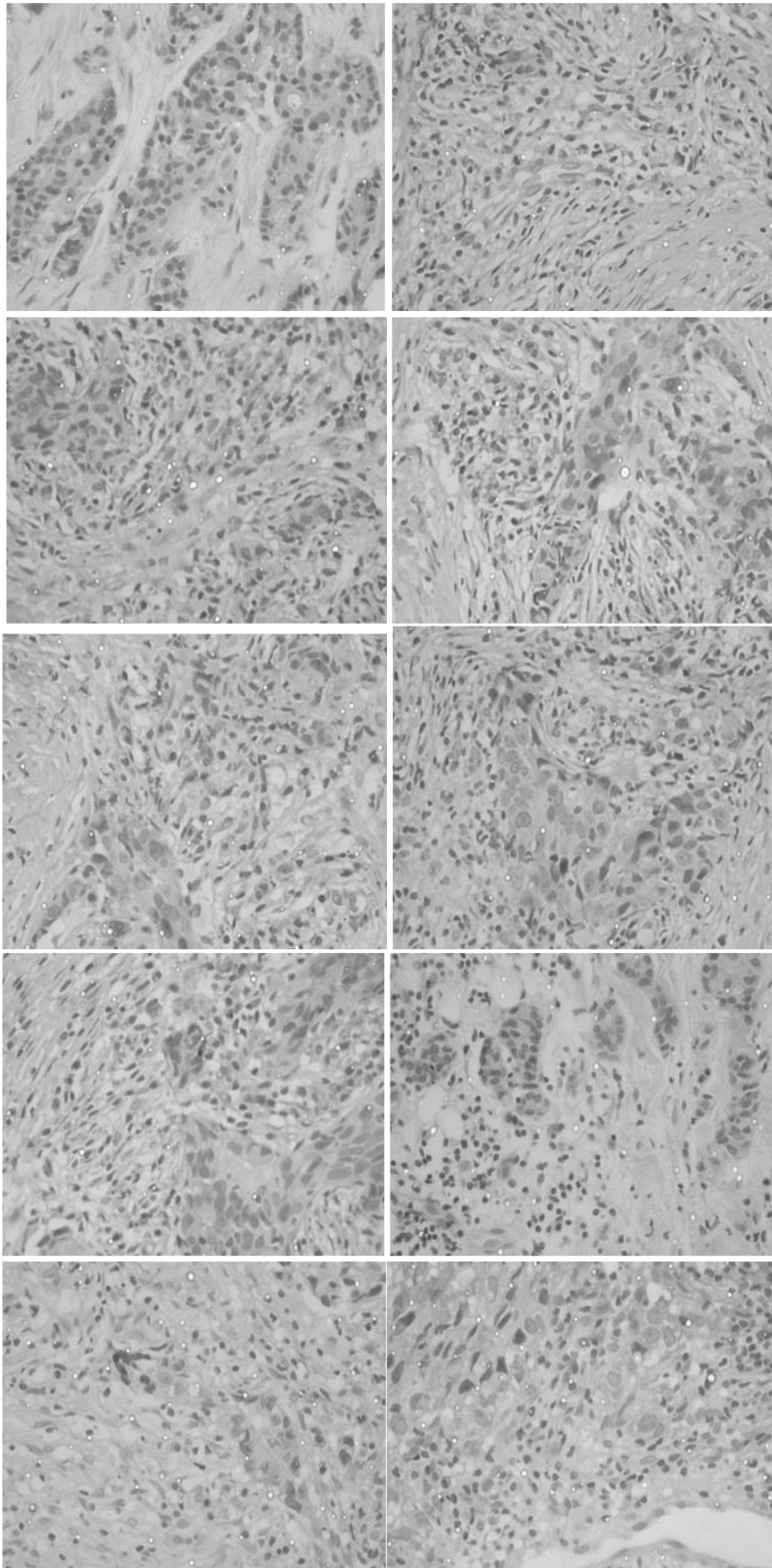


Figure S2 Light microscope images ($\times 40$ magnification) for immunohistochemical low protein expression of FXR1 in breast tissue.

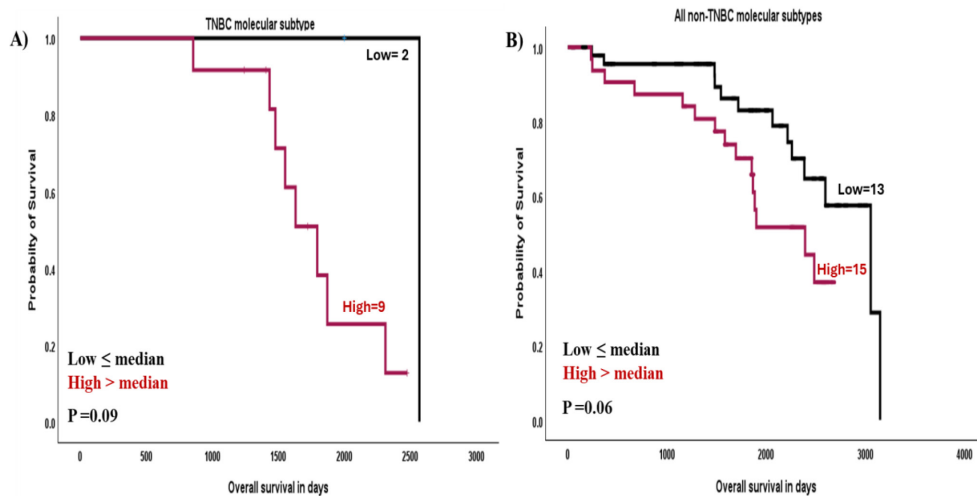


Figure S3 Kaplan-Meier survival plots showing the association between FXR1 protein expression and patients' outcome in the KASH cohort (A) TNBC molecular subtype and (B) all non-TNBC molecular subtype. KASH, King Abdulaziz Specialist Hospital; TNBC, triple-negative breast cancer.

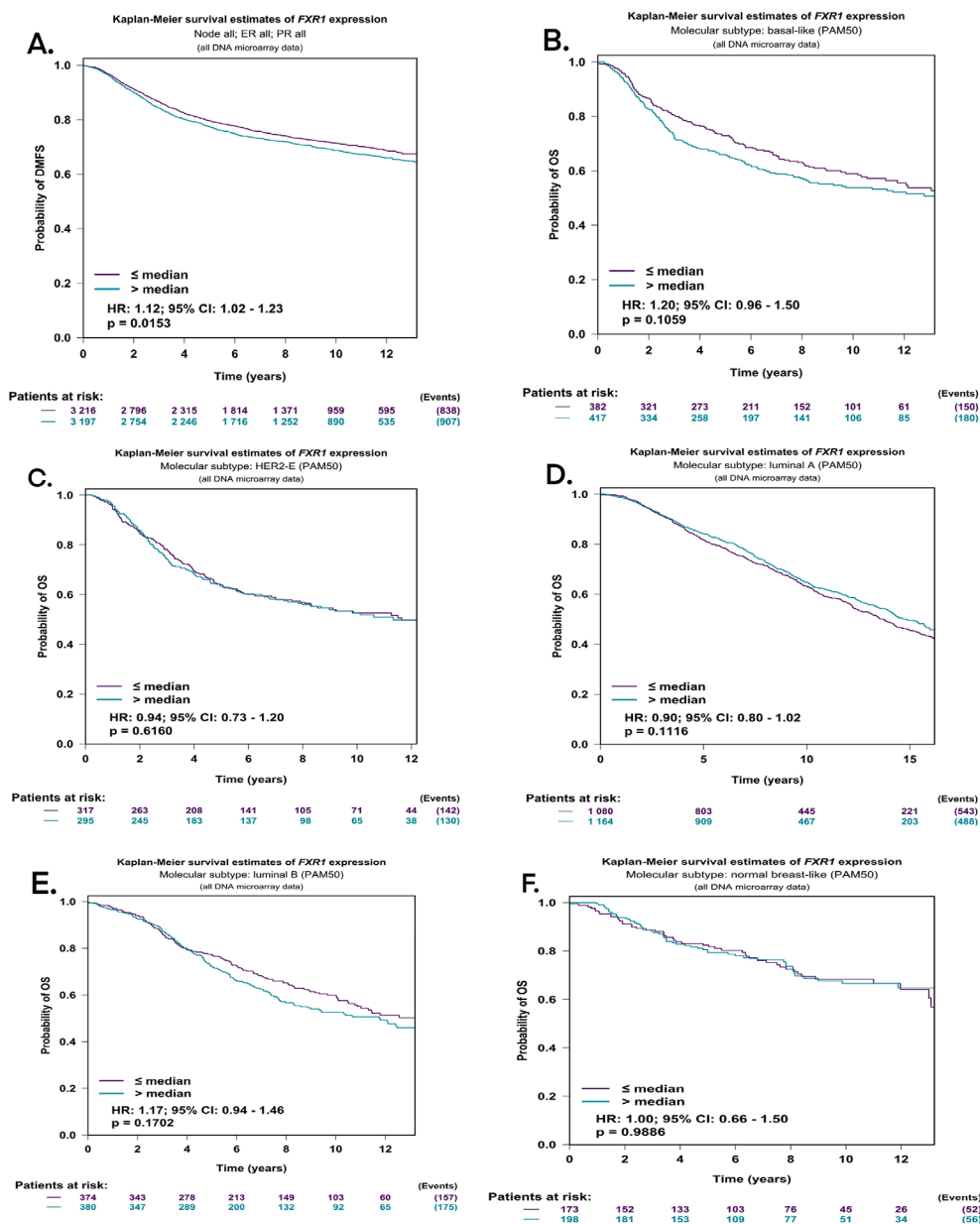


Figure S4 Kaplan-Meier survival plots showing the association between *FXR1* DNA microarray data and patients' outcome in publicly available datasets Breast Cancer Gene-Expression Miner v5 (A) Whole cohort, (B) basal-like molecular subtype, (C) HER2 molecular subtype, (D) luminal-A molecular subtype, (E) luminal-B molecular subtype, and (F) normal breast-like molecular subtype. HER2, human epidermal growth factor 2.