

**Table S1** The abbreviation for each tumor type

Abbreviation	Full name
ACC	Adrenocortical carcinoma
BLCA	Bladder urothelial carcinoma
BRCA	Breast invasive carcinoma
CESC	Cervical squamous cell carcinoma and endocervical adenocarcinoma
CHOL	Cholangiocarcinoma
COAD	Colon adenocarcinoma
DLBC	Lymphoid neoplasm diffuse large B-cell lymphoma
ESCA	Esophageal carcinoma
GBM	Glioblastoma multiforme
HNSC	Head and neck squamous cell carcinoma
KICH	Kidney chromophobe
KIRC	Kidney renal clear cell carcinoma
KIRP	Kidney renal papillary cell carcinoma
LGG	Brain lower grade glioma
LIHC	Liver hepatocellular carcinoma
LUAD	Lung adenocarcinoma
LUSC	Lung squamous cell carcinoma
MESO	Mesothelioma
OV	Ovarian serous cystadenocarcinoma
PAAD	Pancreatic adenocarcinoma
PCPG	Pheochromocytoma and paraganglioma
PRAD	Prostate adenocarcinoma
READ	Rectum adenocarcinoma
SARC	Sarcoma
SKCM	Skin cutaneous melanoma
STAD	Stomach adenocarcinoma
TGCT	Testicular germ cell tumors
THCA	Thyroid carcinoma
THYM	Thymoma
UCEC	Uterine corpus endometrial carcinoma
UCS	Uterine carcinosarcoma
UVM	Uveal melanoma

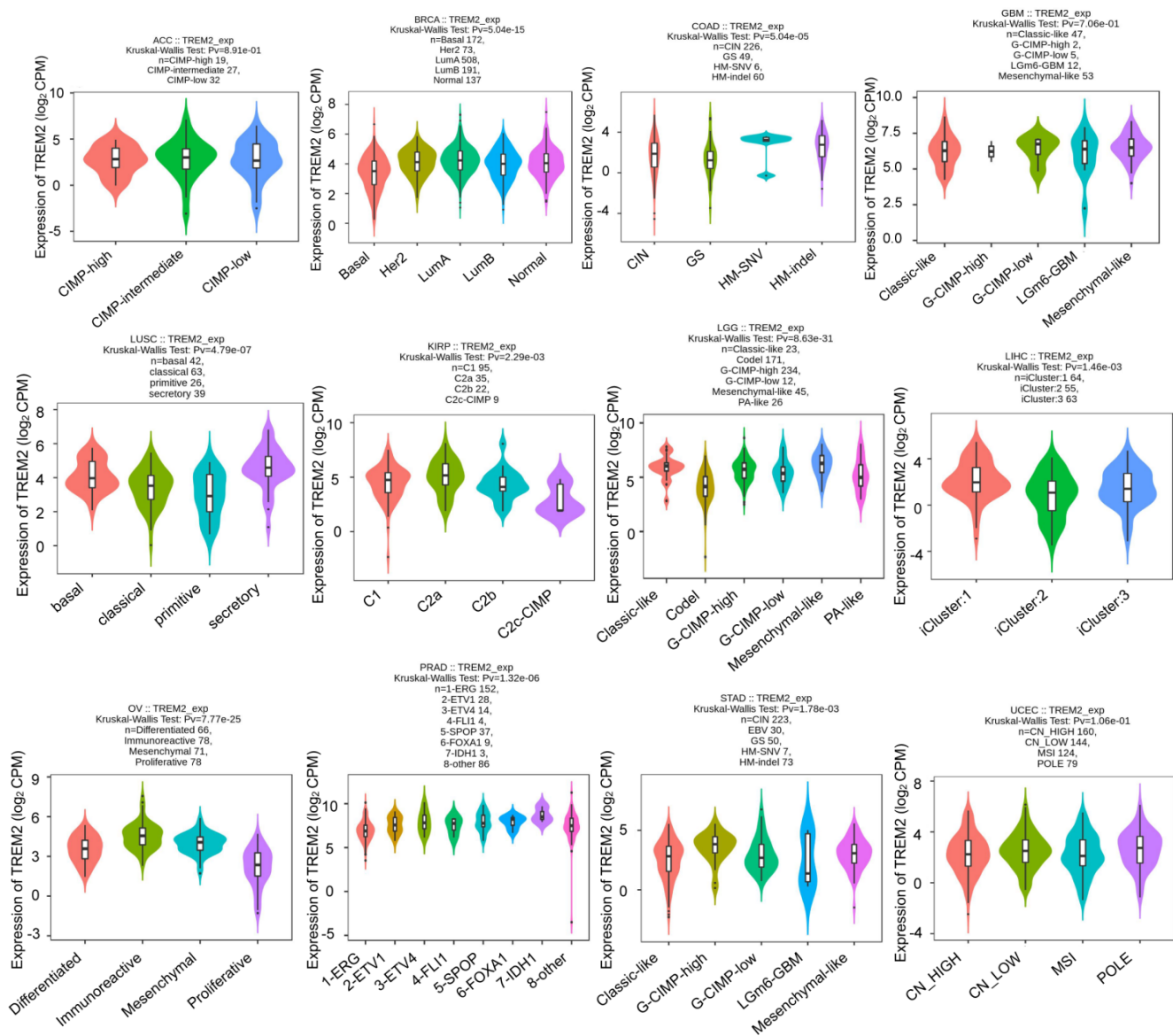
**Table S2** The sequences of the sh-RNA

The name of sh-RNA oligo	The sequences of the sh-RNA oligo
sh-NC-T	GATCCGTGCGTTGTTAGTACTAATCCTATTTGTGAAGCAGATGAAATAGGGTTGGTACTAGCAACGCACTT TTTG
sh-NC-B	AATTCAAAAAGTGCCTGCTAGTACCAACCCTATTTTCATCTGCTTCACAAATAGGATTAGTACTAACAACG CACG
sh-Trem2-T	GATCCGGAGGTACGTGAGAGAATTCTCTCGAGTCATCTGCGATGACTGTGCTCTTTTTG
sh-Trem2-B	AATTCAAAAAGGAGGTACGTGAGAGAATTCTCTCGAGTCATCTGCGATGACTGTGCTCG

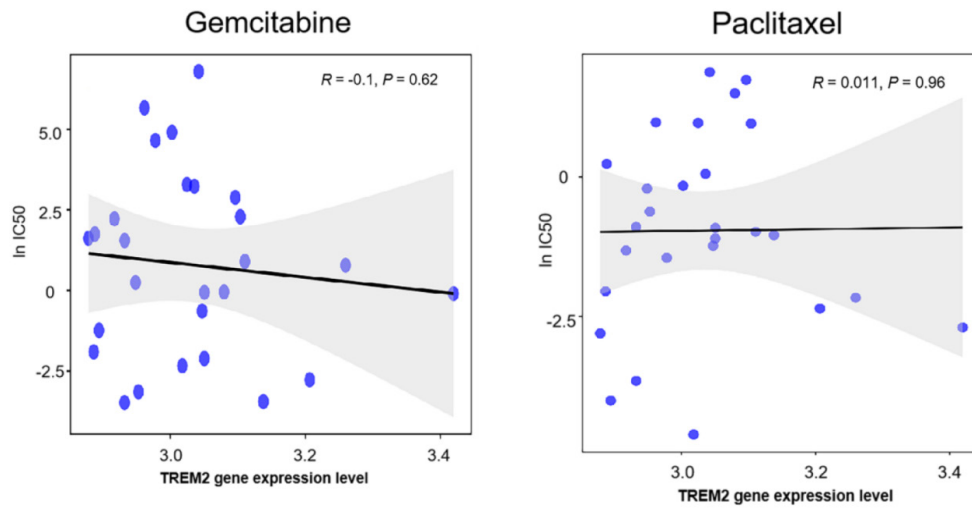
sh-NC-T, sh-negative control-top strand; sh-NC-B, sh-negative control-bottom strand; Trem2, triggering receptor expressed on myeloid cells 2.

**Table S3** The sequences of all PCR primers used

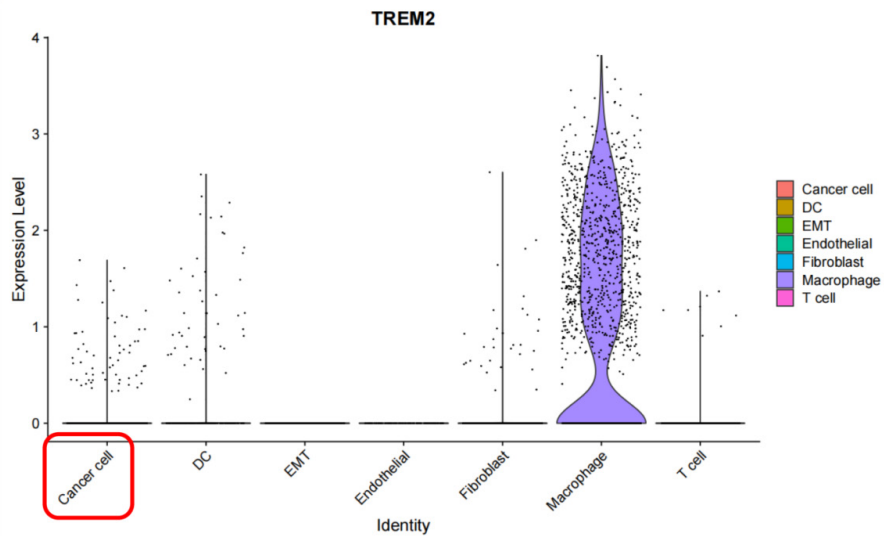
Primer name	Forward primer (5'-3')	Reverse primer (5'-3')
Gapdh	CATCACTGCCACCCAGAAGACTG	ATGCCAGTGAGCTTCCCGTTCCAG
Trem2	CTACCAGTGTCAGAGTCTCCGA	CCTCGAAACTCGATGACTCCTC



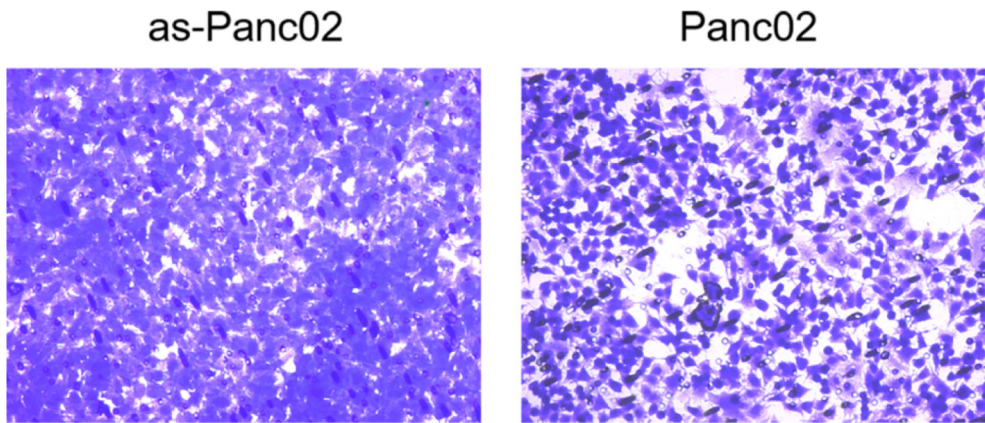
**Figure S1** Molecular subtypes of twelve types of human tumors based on TREM2 expression. TREM2, triggering receptor expressed on myeloid cells 2; CPM, counts per million.



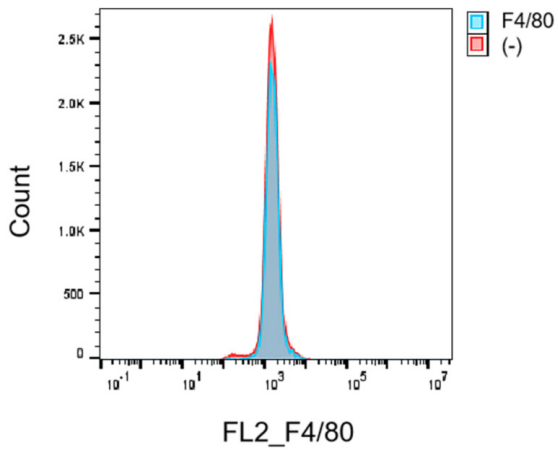
**Figure S2** The association of TREM2 expression and sensitivity of certain chemotherapeutic agents. TREM2, triggering receptor expressed on myeloid cells 2.



**Figure S3** TREM2 is expressed in cancer cells of pancreatic cancer. DC, dendritic cell; EMT, epithelial-mesenchymal transition; TREM2, triggering receptor expressed on myeloid cells 2.



**Figure S4** Transwell migration assay stained with crystal violet was utilized to assess the migratory capabilities of as-Panc02 and Panc02 (magnification, 20 $\times$ ).



**Figure S5** as-Panc02 was not express the mouse macrophage marker F4/80.

## Appendix 1

*The original image of the full western blot*

Figure 3B

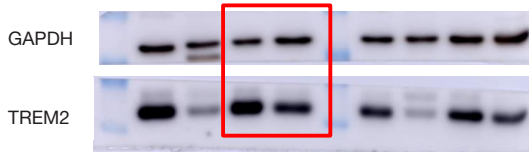


Figure 4A



Figure 5A

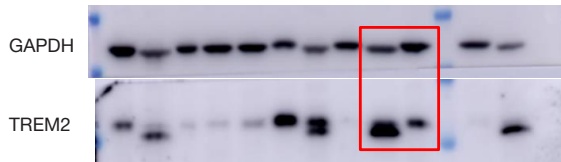


Figure 5C

