

Figure S1 TREM1 was upregulated in lung metastases. Expression value of TREM1 from GSE40367 dataset (liver cancer without lung metastasis, n=10; liver cancer with lung metastasis, n=14). *, P<0.05, by two-tailed unpaired t-test. HCC, hepatocellular carcinoma; TREM1, Triggering Receptor Expressed on Myeloid Cells 1.

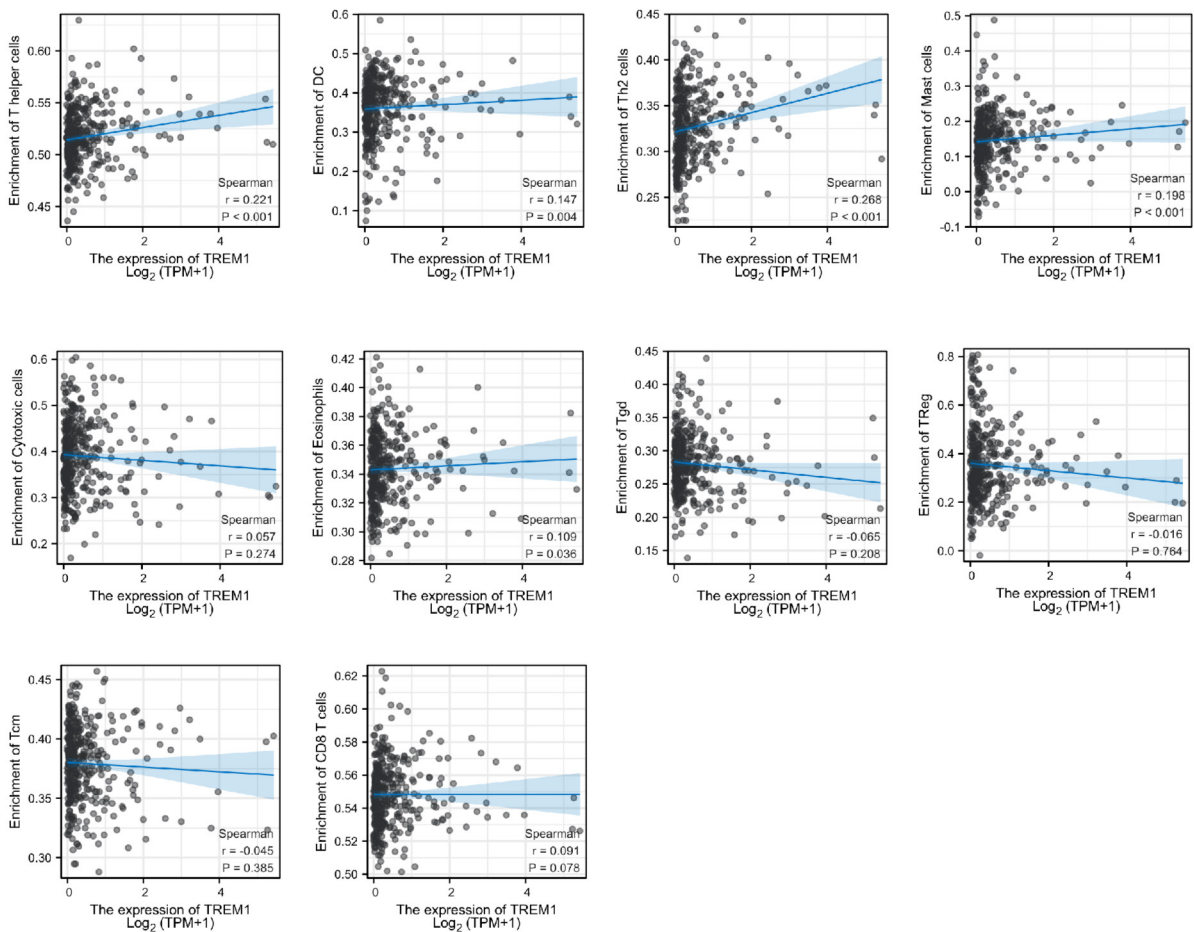


Figure S2 TREM1 associates with tumor immune microenvironment. Correlation analysis of TREM1 and immune cells from TCGA using ssGSEA. TREM1, Triggering Receptor Expressed on Myeloid Cells 1; TPM, transcripts per million; DC, dendritic cell; TCGA, The Cancer Genome Atlas; ssGSEA, single sample gene set enrichment analysis.

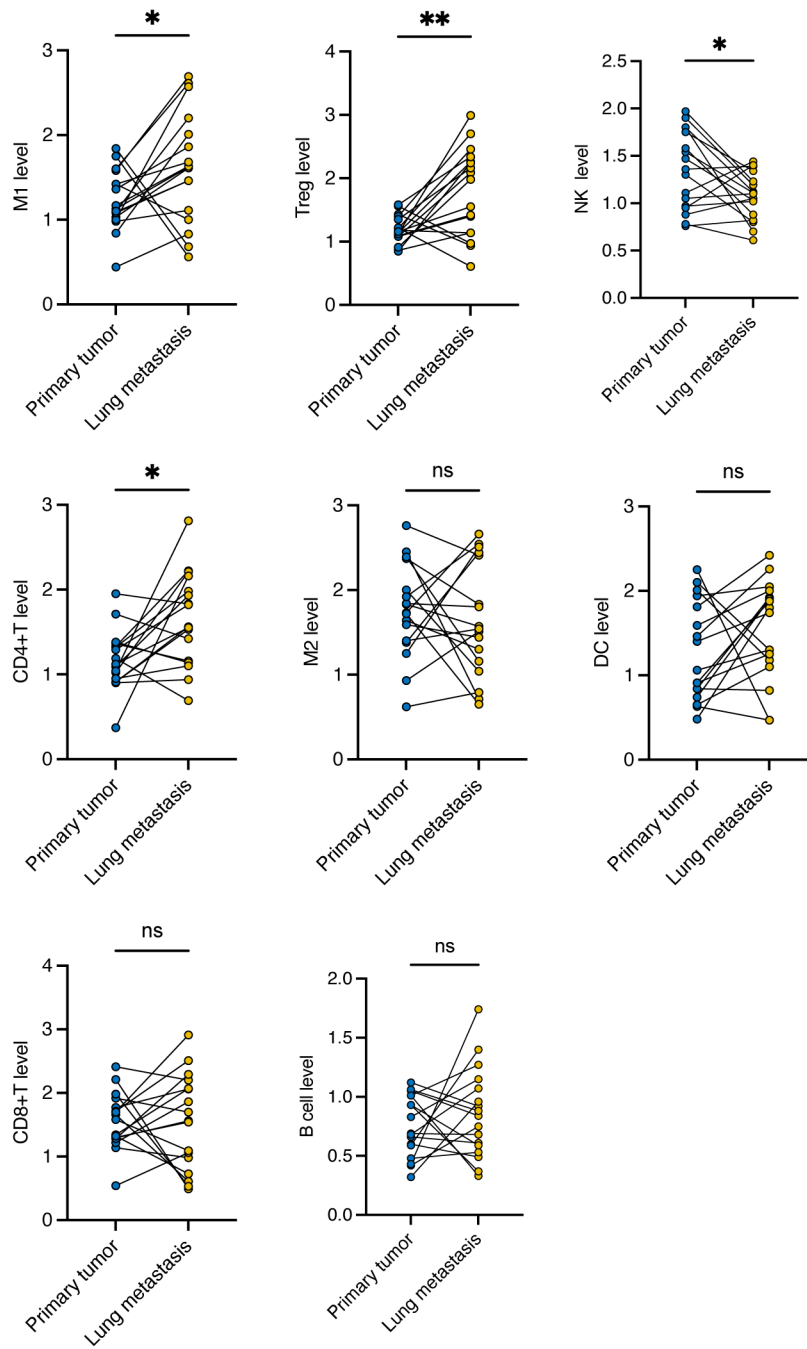


Figure S3 Dynamic immune cells in paired primary tumors and lung metastases. Metastasis-associated immune cells analyses between paired primary tumors and lung metastases. *, $P < 0.05$; **, $P < 0.01$; ns, not significant, by two-tailed paired t-test. NK, natural killer; DC, dendritic cell.

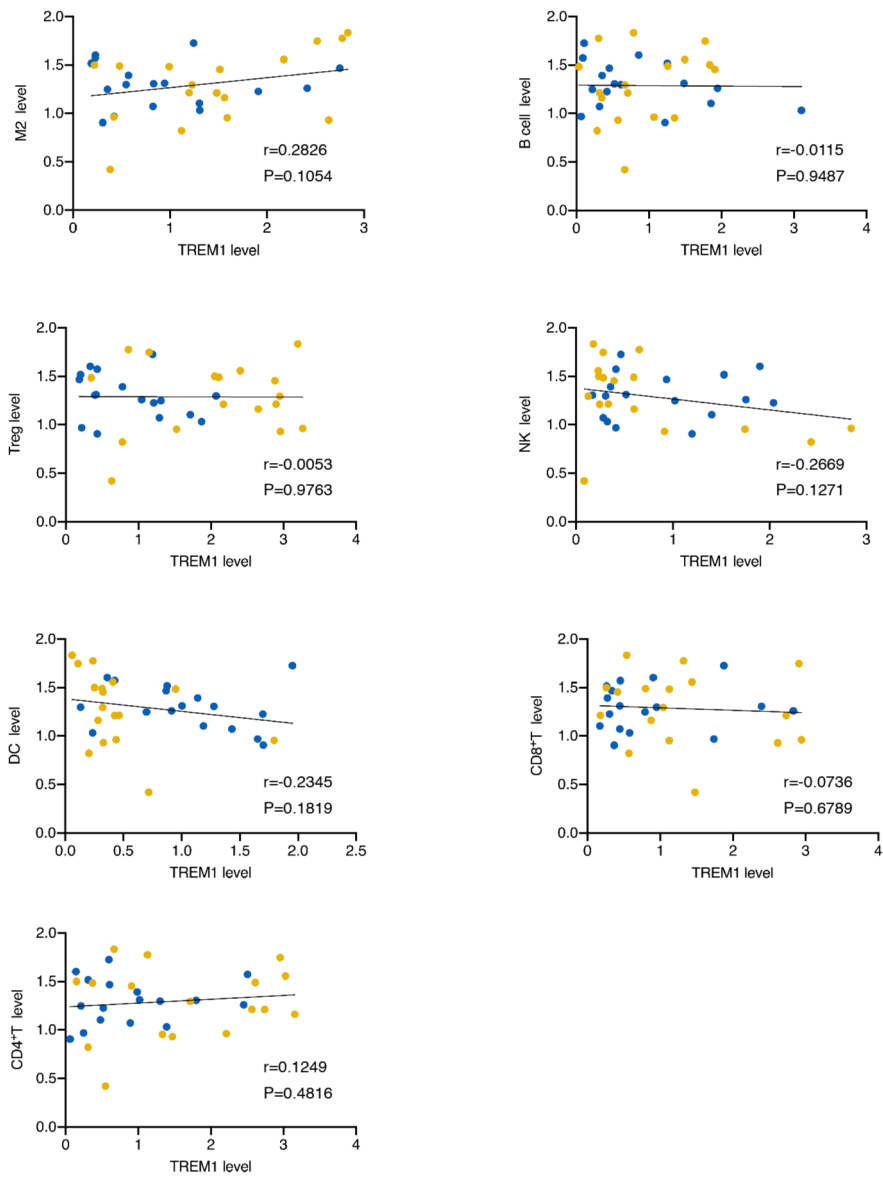


Figure S4 TREM1 promotes neutrophil in lung metastasis. Correlation analyses between TREM1 and metastasis-associated immune cells. TREM1, Triggering Receptor Expressed on Myeloid Cells 1; NK, natural killer; DC, dendritic cell.