

Supplementary

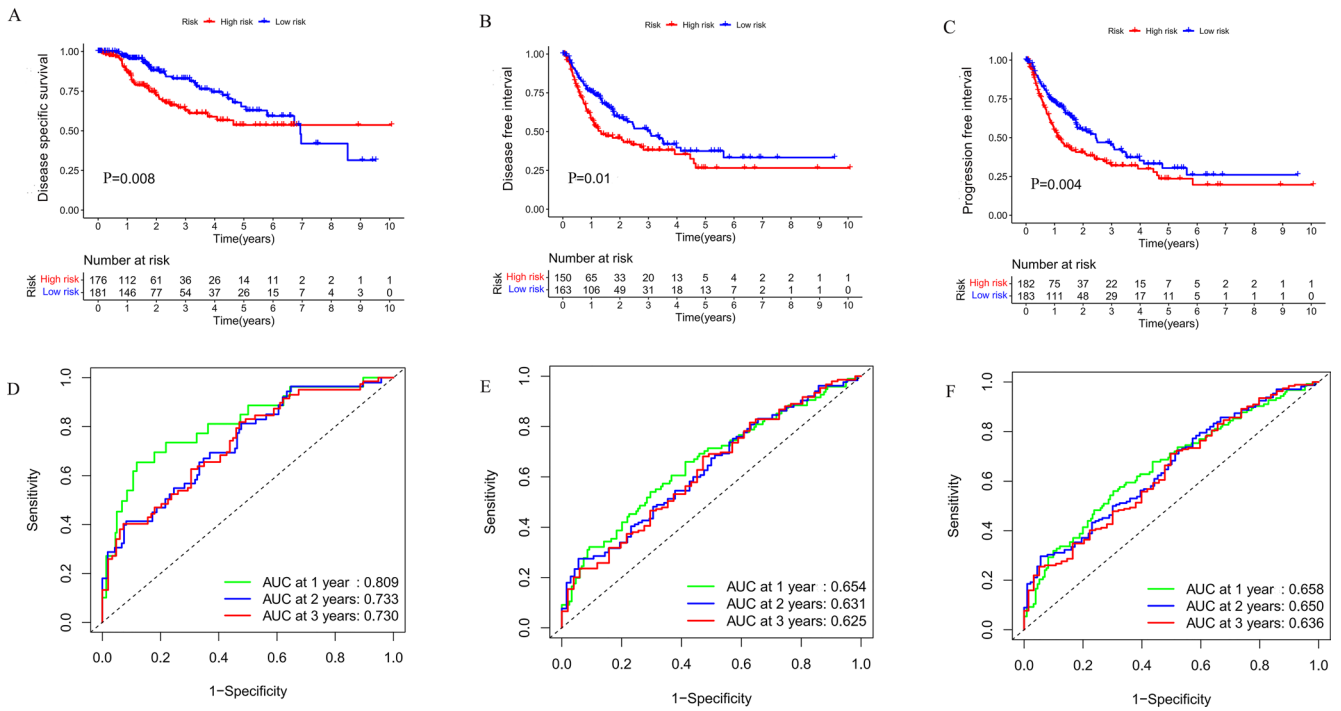


Figure S1 Differences in (A) DSS, (B) DFI, and (C) PFI between high- and low-risk groups. ROC curves for (D) DSS, (E) DFI, (F) PFI of the high- and low-risk groups. AUC, area under the ROC curve; ROC, receiver operating characteristic; DSS, disease-specific survival; DFI, disease-free interval; PFI, progression-free interval.

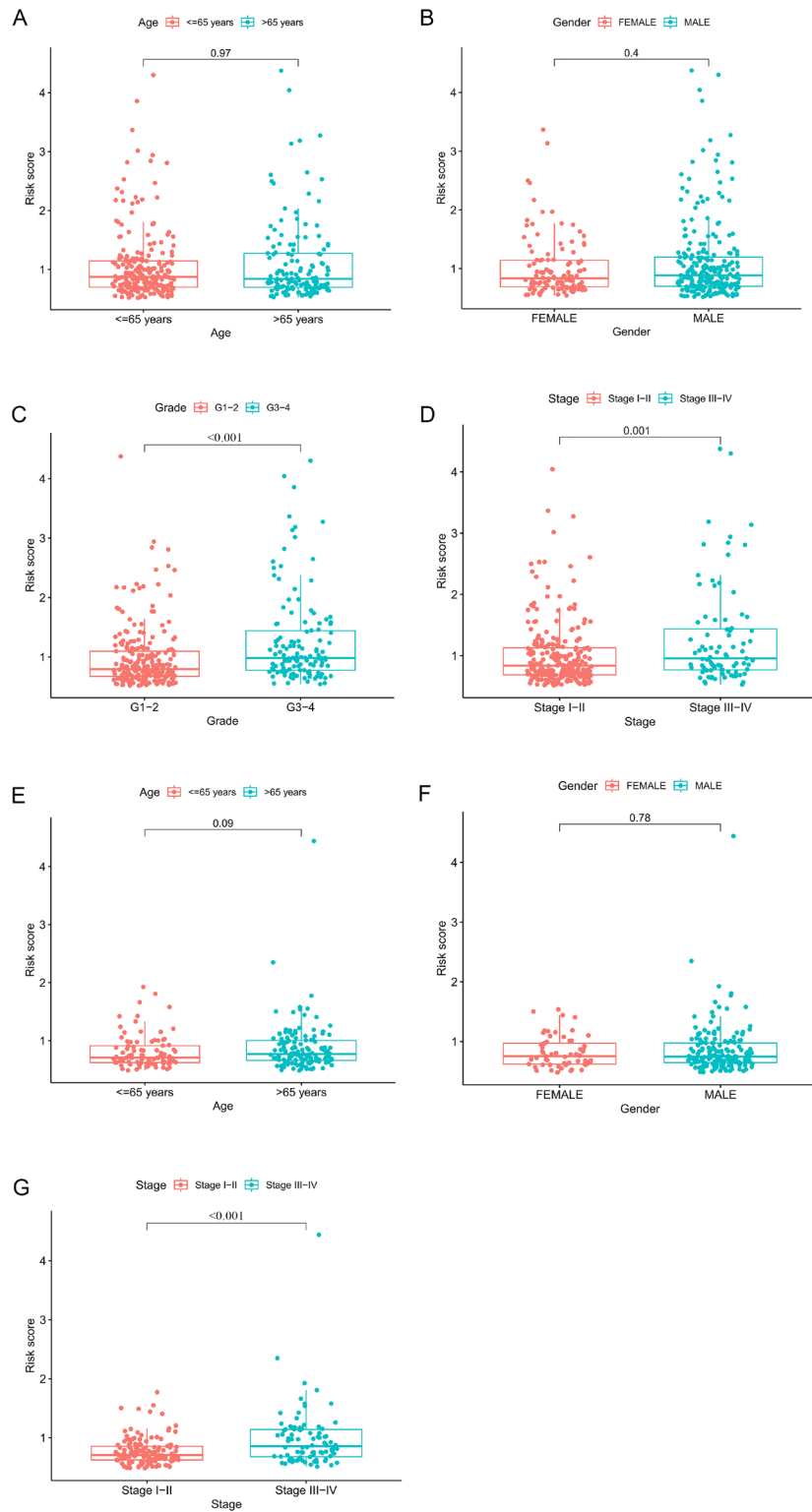


Figure S2 Between clinical traits and risk scores. TCGA cohort: (A) age; (B) gender; (C) tumor grade; (D) clinical stage. ICGC cohort: (E) age; (F) gender; (G) clinical stage. TCGA, The Cancer Genome Atlas; ICGC, International Cancer Genome Consortium.