

Figure S1 Data collection and batch effect removal of the three GEO datasets (GSE183795, GSE78229, and GSE57495). (A) Intersection between the 3 GEO datasets. (B,C) From the boxplot, we can observe that the sample distribution of each data set varies greatly before removing the batch effect. After removing the batch effect, the data distribution tends to be consistent across data sets, with the median on a line. (D,E) From the density map, data distribution tends to be consistent across three data sets after removing batch effects, with similar means and variances. (F,G) From the Umap, after removing the batch effect, the samples are clustered and evenly intertwined across datasets. GEO, Gene Expression Omnibus.

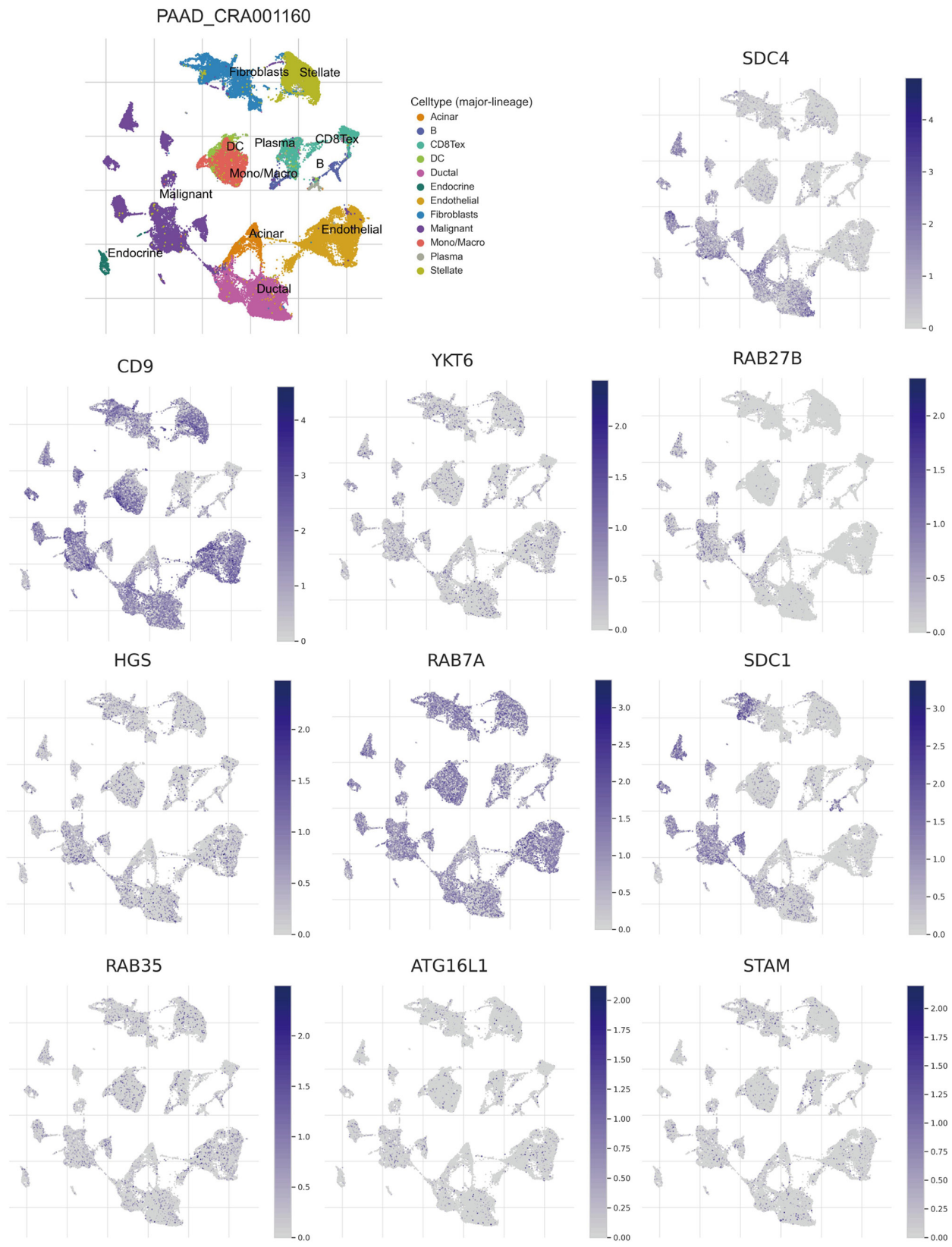


Figure S2 Single-cell analysis of 10 genes in CRA001160 by the Tumor Immune Single-cell Hub database.

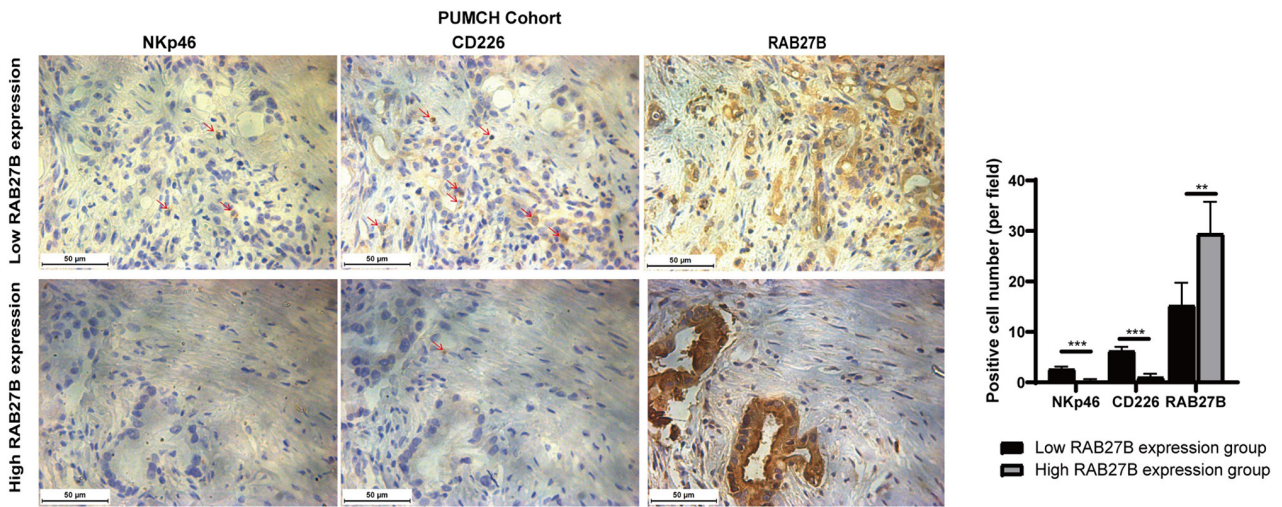


Figure S3 Representative IHC images of NKp46 and CD226 in low and high RAB27B expression groups in PUMCH cohort (n=10). Statistical analysis showed the mean positive cells number in five random IHC fields of NKp46, CD226 and RAB27B. Red arrows indicated the positive immune cells stained by NKp46 or CD226. Significant results were observed at *******, $P < 0.001$ and ******, $P < 0.01$, respectively. PUMCH, Peking Union Medical College Hospital; IHC, immunohistochemistry.

Table S1 Detailed follow-up information of 148 cases from TCGA-pancreatic adenocarcinoma

ID	futime	fustat
TCGA-2J-AAB6	293	1
TCGA-2J-AAB8	80	0
TCGA-2J-AAB9	627	1
TCGA-2J-AABA	607	1
TCGA-2J-AABE	676	0
TCGA-2J-AABF	691	1
TCGA-2J-AABK	484	0
TCGA-2J-AABO	440	0
TCGA-2J-AABR	438	0
TCGA-2J-AABT	319	0
TCGA-2J-AABU	277	1
TCGA-2J-AABV	652	1
TCGA-2L-AAQA	143	1
TCGA-2L-AAQE	684	1
TCGA-2L-AAQI	103	1
TCGA-2L-AAQJ	394	1
TCGA-2L-AAQL	292	1
TCGA-3A-A9I5	1794	0
TCGA-3A-A9I7	1323	0
TCGA-3A-A9I9	634	1
TCGA-3A-A9IB	224	1
TCGA-3A-A9IC	738	1
TCGA-3A-A9IH	1021	0
TCGA-3A-A9IU	458	1
TCGA-3A-A9IX	1037	0
TCGA-3A-A9IZ	308	1
TCGA-3A-A9J0	743	0
TCGA-3E-AAAY	2285	0
TCGA-3E-AAAZ	2182	1
TCGA-F2-6880	295	0
TCGA-F2-7273	592	1
TCGA-F2-7276	216	1
TCGA-F2-A44G	233	1
TCGA-F2-A44H	586	0

Table S1 (continued)

Table S1 (continued)

ID	futime	fustat
TCGA-F2-A7TX	95	1
TCGA-F2-A8YN	517	0
TCGA-FB-A4P5	179	1
TCGA-FB-A4P6	767	0
TCGA-FB-A545	732	1
TCGA-FB-A5VM	498	1
TCGA-FB-A78T	375	1
TCGA-FB-AAPP	485	1
TCGA-FB-AAPQ	1130	1
TCGA-FB-AAPS	228	0
TCGA-FB-AAPU	381	1
TCGA-FB-AAPY	1059	1
TCGA-FB-AAPZ	716	0
TCGA-FB-AAQ0	473	1
TCGA-FB-AAQ1	123	1
TCGA-FB-AAQ2	153	1
TCGA-FB-AAQ3	31	1
TCGA-FB-AAQ6	244	1
TCGA-FZ-5919	741	1
TCGA-FZ-5920	61	1
TCGA-FZ-5921	155	1
TCGA-FZ-5922	1101	1
TCGA-FZ-5923	619	1
TCGA-FZ-5924	480	1
TCGA-FZ-5926	541	1
TCGA-H6-8124	392	0
TCGA-HV-A5A3	128	1
TCGA-HV-A5A4	232	0
TCGA-HV-A5A5	289	0
TCGA-HV-A5A6	2036	1
TCGA-HV-A7OL	252	0
TCGA-HV-AA8V	920	0
TCGA-HV-AA8X	532	1
TCGA-HZ-7918	969	0
TCGA-HZ-7919	593	1

Table S1 (continued)

Table S1 (continued)

ID	futime	fustat
TCGA-HZ-7920	236	1
TCGA-HZ-7923	314	0
TCGA-HZ-7924	840	0
TCGA-HZ-7925	614	1
TCGA-HZ-7926	518	1
TCGA-HZ-8001	706	0
TCGA-HZ-8002	366	1
TCGA-HZ-8003	596	1
TCGA-HZ-8005	120	1
TCGA-HZ-8315	299	1
TCGA-HZ-8317	378	1
TCGA-HZ-8636	545	1
TCGA-HZ-8637	517	1
TCGA-HZ-A49G	660	0
TCGA-HZ-A49H	491	0
TCGA-HZ-A49I	308	1
TCGA-HZ-A4BH	194	0
TCGA-HZ-A77O	160	1
TCGA-IB-7644	394	1
TCGA-IB-7645	1502	1
TCGA-IB-7646	145	1
TCGA-IB-7647	666	1
TCGA-IB-7649	467	1
TCGA-IB-7651	603	1
TCGA-IB-7652	1116	0
TCGA-IB-7654	476	1
TCGA-IB-7885	1257	0
TCGA-IB-7886	123	1
TCGA-IB-7887	110	1
TCGA-IB-7888	1332	1
TCGA-IB-7889	481	1
TCGA-IB-7890	598	1
TCGA-IB-7891	913	1
TCGA-IB-7893	117	1
TCGA-IB-7897	486	1

Table S1 (continued)

Table S1 (continued)

ID	futime	fustat
TCGA-IB-8126	462	0
TCGA-IB-8127	522	0
TCGA-IB-A5SO	365	1
TCGA-IB-A5SP	482	0
TCGA-IB-A5SQ	219	1
TCGA-IB-A5SS	460	1
TCGA-IB-A5ST	635	0
TCGA-IB-A6UF	666	0
TCGA-IB-A6UG	41	1
TCGA-IB-A7LX	250	1
TCGA-IB-A7M4	483	0
TCGA-IB-AAUN	144	1
TCGA-IB-AAUO	239	1
TCGA-IB-AAUP	431	0
TCGA-IB-AAUQ	183	1
TCGA-IB-AAUR	338	0
TCGA-IB-AAUS	225	0
TCGA-IB-AAUU	245	0
TCGA-IB-AAUV	404	0
TCGA-IB-AAUW	230	1
TCGA-L1-A7W4	278	1
TCGA-LB-A7SX	393	1
TCGA-LB-A8F3	379	0
TCGA-LB-A9Q5	313	1
TCGA-M8-A5N4	584	0
TCGA-OE-A75W	267	1
TCGA-PZ-A5RE	470	1
TCGA-Q3-A5QY	416	0
TCGA-Q3-AA2A	95	0
TCGA-RB-AA9M	286	0
TCGA-S4-A8RM	737	0
TCGA-S4-A8RO	525	0
TCGA-S4-A8RP	702	1
TCGA-US-A774	695	1
TCGA-US-A779	511	1

Table S1 (continued)

Table S1 (*continued*)

ID	futime	fustat
TCGA-US-A77J	568	1
TCGA-XD-AAUG	420	0
TCGA-XD-AAUH	395	0
TCGA-XD-AAUI	366	1
TCGA-XD-AAUL	498	0
TCGA-XN-A8T3	951	0
TCGA-YB-A89D	350	0
TCGA-YY-A8LH	2016	0
TCGA-Z5-AAPL	467	0

TCGA, The Cancer Genome Atlas.

Table S2 Detailed follow-up information of 63 cases from GSE57495

ID	futime	fustat
GSM1383802	88	1
GSM1383840	113	1
GSM1383815	135	1
GSM1383782	151	1
GSM1383780	186	1
GSM1383839	224	1
GSM1383797	235	1
GSM1383823	265	1
GSM1383805	266	1
GSM1383792	278	1
GSM1383828	298	1
GSM1383806	318	1
GSM1383827	345	0
GSM1383825	365	1
GSM1383784	376	1
GSM1383778	406	1
GSM1383837	408	1
GSM1383810	418	1
GSM1383830	465	1
GSM1383820	469	1
GSM1383790	477	1
GSM1383801	485	1
GSM1383821	487	1
GSM1383822	493	1
GSM1383786	526	1
GSM1383833	530	1
GSM1383813	538	1
GSM1383809	585	1
GSM1383816	601	1
GSM1383789	615	1
GSM1383783	619	1
GSM1383835	634	1
GSM1383807	645	1
GSM1383826	657	0

Table S2 (continued)

Table S2 (continued)

ID	futime	fustat
GSM1383836	681	0
GSM1383838	697	0
GSM1383832	727	0
GSM1383834	769	0
GSM1383804	790	1
GSM1383817	813	0
GSM1383787	850	1
GSM1383814	860	0
GSM1383800	872	1
GSM1383829	875	0
GSM1383831	890	0
GSM1383795	904	1
GSM1383811	908	0
GSM1383808	916	1
GSM1383794	947	1
GSM1383803	952	1
GSM1383819	990	1
GSM1383812	1004	0
GSM1383824	1004	0
GSM1383779	1091	1
GSM1383818	1107	0
GSM1383791	1132	1
GSM1383798	1134	0
GSM1383788	1357	0
GSM1383799	1485	0
GSM1383796	1623	0
GSM1383793	1736	0
GSM1383785	1910	0
GSM1383781	2395	0

Table S3 Detailed follow-up information 49 cases from GSE78229

ID	futime	fustat
GSM1527105	1533	1
GSM1527109	81	1
GSM1527137	1200	0
GSM1527139	36	1
GSM1527141	396	1
GSM1527145	324	1
GSM1527147	870	1
GSM1527149	831	1
GSM1527151	828	0
GSM1527155	204	1
GSM1527157	846	0
GSM1527159	294	1
GSM1527161	708	0
GSM1527163	231	1
GSM1527165	654	0
GSM1527167	636	0
GSM1527169	633	0
GSM1527171	267	1
GSM1527175	192	1
GSM1527177	492	0
GSM1527179	138	1
GSM1527181	318	0
GSM1527183	126	1
GSM1527185	309	1
GSM1527189	447	1
GSM1527191	135	1
GSM1527193	387	1
GSM1527196	285	1
GSM1527198	189	1
GSM1527199	27	1
GSM1527200	177	1
GSM1527202	294	1
GSM1527204	159	1
GSM1527205	645	1
GSM1527207	426	1

Table S3 (continued)**Table S3** (continued)

ID	futime	fustat
GSM1527209	960	1
GSM1527212	1377	1
GSM1527213	657	1
GSM1527215	1260	0
GSM1527216	1149	0
GSM1527218	411	1
GSM1527219	327	1
GSM1527220	639	1
GSM1527223	279	1
GSM1527225	597	1
GSM1527227	2124	0
GSM1527228	2040	0
GSM1527230	2031	0
GSM1527232	1491	1

Table S4 Detailed follow-up information 134 cases from GSE183795

ID	futime	fustat
GSM5570969	1681	0
GSM5570983	748	0
GSM5571006	1029	0
GSM5571014	1060	0
GSM5571019	1200	0
GSM5571031	324	0
GSM5571037	662	0
GSM5571044	320	0
GSM5571047	828	0
GSM5571048	278	0
GSM5571052	251	0
GSM5571061	846	0
GSM5571069	708	0
GSM5571079	654	0
GSM5571080	545	0
GSM5571083	636	0
GSM5571084	524	0
GSM5571087	633	0
GSM5571088	233	0
GSM5571092	49	0
GSM5571095	519	0
GSM5571104	492	0
GSM5571108	318	0
GSM5571116	291	0
GSM5571127	828	0
GSM5571128	806	0
GSM5571130	749	0
GSM5571135	615	0
GSM5571145	266	0
GSM5571146	415	0
GSM5571148	447	0
GSM5571150	292	0
GSM5571151	21	0
GSM5571153	195	0

Table S3 (continued)

Table S3 (continued)

ID	futime	fustat
GSM5571154	191	0
GSM5571155	168	0
GSM5571157	86	0
GSM5571159	95	0
GSM5571161	136	0
GSM5571162	262	0
GSM5571163	24	0
GSM5571165	92	0
GSM5571167	12	0
GSM5571192	1260	0
GSM5571193	1149	0
GSM5571204	2124	0
GSM5571205	2040	0
GSM5571207	2031	0
GSM5570968	1533	1
GSM5570970	417	1
GSM5570972	118	1
GSM5570973	1077	1
GSM5570975	140	1
GSM5570976	72	1
GSM5570977	251	1
GSM5570979	74	1
GSM5570987	155	1
GSM5570988	585	1
GSM5570993	592	1
GSM5570994	378	1
GSM5570997	251	1
GSM5570998	480	1
GSM5571000	266	1
GSM5571001	1227	1
GSM5571004	923	1
GSM5571005	84	1
GSM5571008	379	1
GSM5571009	348	1

Table S3 (continued)

Table S3 (continued)

ID	futime	fustat
GSM5571010	207	1
GSM5571011	452	1
GSM5571012	321	1
GSM5571015	741	1
GSM5571016	757	1
GSM5571018	51	1
GSM5571020	216	1
GSM5571022	36	1
GSM5571023	49	1
GSM5571026	396	1
GSM5571027	421	1
GSM5571030	696	1
GSM5571036	324	1
GSM5571040	870	1
GSM5571043	831	1
GSM5571051	414	1
GSM5571053	96	1
GSM5571054	81	1
GSM5571057	204	1
GSM5571062	85	1
GSM5571065	294	1
GSM5571066	426	1
GSM5571070	330	1
GSM5571073	231	1
GSM5571074	36	1
GSM5571091	267	1
GSM5571096	430	1
GSM5571097	998	1
GSM5571098	1248	1
GSM5571100	238	1
GSM5571101	192	1
GSM5571102	23	1
GSM5571106	138	1
GSM5571110	126	1

Table S3 (continued)

Table S3 (continued)

ID	futime	fustat
GSM5571114	309	1
GSM5571118	447	1
GSM5571120	135	1
GSM5571122	387	1
GSM5571125	469	1
GSM5571132	147	1
GSM5571133	285	1
GSM5571137	420	1
GSM5571139	289	1
GSM5571140	62	1
GSM5571142	44	1
GSM5571144	358	1
GSM5571168	447	1
GSM5571172	285	1
GSM5571174	189	1
GSM5571176	27	1
GSM5571177	177	1
GSM5571179	294	1
GSM5571181	159	1
GSM5571182	645	1
GSM5571184	426	1
GSM5571186	960	1
GSM5571187	687	1
GSM5571189	1377	1
GSM5571190	657	1
GSM5571195	411	1
GSM5571196	327	1
GSM5571197	639	1
GSM5571200	279	1
GSM5571202	597	1
GSM5571209	1491	1
GSM5571211	96	1

Table S5 Result of bi-directional stepwise multivariate Cox analysis

ID	coef	HR	HR.95L	HR.95H	P value
RAB27B	0.239801	1.270996	1.058891	1.525587	0.010046
YKT6	0.351769	1.42158	0.918688	2.199757	0.114285

Start: AIC=1138.63

Surv(futime, fustat) ~ CD9 + RAB27B + RAB7A + YKT6

Df AIC

- RAB7A 1 1137.5

- YKT6 1 1137.8

- CD9 1 1138.1

<none> 1138.6

- RAB27B 1 1141.6

Step: AIC=1137.51

Surv(futime, fustat) ~ CD9 + RAB27B + YKT6

Df AIC

- CD9 1 1137.5

<none> 1137.5

- YKT6 1 1137.7

+ RAB7A 1 1138.6

- RAB27B 1 1140.5

Step: AIC=1137.46

Surv(futime, fustat) ~ RAB27B + YKT6

Df AIC

<none> 1137.5

+ CD9 1 1137.5

- YKT6 1 1137.9

+ RAB7A 1 1138.1

- RAB27B 1 1142.0

Table S6 Detailed risk score and risk group in total cohort

ID	futime	fustat	RAB27B	YKT6	RiskScore	Risk
TCGA-3A-A9IB	0.61369863	1	5.493612	7.266514	1.225621949	High
TCGA-IB-7646	0.397260274	1	5.979517	7.365331	1.425795037	High
TCGA-IB-AAUO	0.654794521	1	4.829855	6.883596	0.913547702	Low
TCGA-FB-AAPQ	3.095890411	1	5.619848	6.599973	0.999251758	Low
TCGA-FB-AAPS	0.624657534	0	4.646268	7.108799	0.946272626	Low
TCGA-IB-8126	1.265753425	0	3.78484	5.745986	0.476546015	Low
TCGA-US-A77J	1.556164384	1	3.908971	6.936349	0.746252313	Low
TCGA-3E-AAAZ	5.978082192	1	6.612657	6.951844	1.434914327	High
TCGA-HZ-8001	1.934246575	0	4.614248	7.204732	0.971264225	Low
TCGA-IB-7889	1.317808219	1	5.096673	7.336678	1.142185654	High
TCGA-FB-AAPP	1.328767123	1	6.527393	7.708237	1.834431014	High
TCGA-2L-AAQE	1.873972603	1	4.520065	7.415101	1.022508988	High
TCGA-IB-7886	0.336986301	1	6.157771	6.92574	1.274865334	High
TCGA-2J-AABR	1.2	0	5.215802	6.913864	1.012860036	Low
TCGA-XD-AAUL	1.364383562	0	6.030056	7.172515	1.348539539	High
TCGA-2J-AABE	1.852054795	0	5.756895	6.886078	1.141973968	High
TCGA-IB-AAUV	1.106849315	0	3.1106	7.151879	0.664762974	Low
TCGA-FB-A5VM	1.364383562	1	3.344197	7.562087	0.812199284	Low
TCGA-IB-8127	1.430136986	0	4.99838	7.23538	1.076526265	High
TCGA-2J-AABV	1.78630137	1	2.57643	5.673492	0.347681035	Low
TCGA-2J-AABO	1.205479452	0	4.275535	7.336499	0.937977958	Low
TCGA-IB-A5SQ	0.6	1	4.885892	7.188294	1.030662019	High
TCGA-F2-A44G	0.638356164	1	6.046691	6.724236	1.156410288	High
TCGA-2L-AAQA	0.391780822	1	6.362281	6.914232	1.333535988	High
TCGA-HZ-7920	0.646575342	1	5.378002	7.084318	1.11810374	High
TCGA-HZ-7918	2.654794521	0	4.869948	6.985508	0.956039667	Low
TCGA-US-A779	1.4	1	5.902853	6.896328	1.186923647	High
TCGA-XD-AAUH	1.082191781	0	4.07746	6.869629	0.758996778	Low
TCGA-HZ-7924	2.301369863	0	6.993199	6.894101	1.540407845	High
TCGA-F2-A7TX	0.260273973	1	4.850137	7.155576	1.010169439	Low
TCGA-HZ-7925	1.682191781	1	5.365092	7.184891	1.15478802	High
TCGA-3A-A9IC	2.021917808	1	5.656979	7.312904	1.29555934	High
TCGA-FB-A545	2.005479452	1	5.676702	7.334995	1.311856151	High
TCGA-2J-AAB6	0.802739726	1	4.549111	7.592101	1.095803365	High
TCGA-IB-7891	2.501369863	1	5.224879	6.906055	1.012282574	Low
TCGA-3A-A9IU	1.254794521	1	5.450105	6.824638	1.038292099	High
TCGA-2L-AAQI	0.282191781	1	5.754681	6.994678	1.185814058	High

Table S6 (continued)

Table S6 (continued)

ID	futime	fustat	RAB27B	YKT6	RiskScore	Risk
TCGA-3A-A9J0	2.035616438	0	3.766631	7.197445	0.790587226	Low
TCGA-HV-A5A3	0.350684932	1	6.431794	6.840458	1.3212152	High
TCGA-HZ-7926	1.419178082	1	4.359978	7.27443	0.936492955	Low
TCGA-IB-AAUN	0.394520548	1	6.096439	6.931095	1.258621172	High
TCGA-IB-7885	3.443835616	0	5.477035	7.331325	1.248910723	High
TCGA-RB-AA9M	0.783561644	0	5.399335	7.146408	1.148654396	High
TCGA-HZ-8315	0.819178082	1	5.83939	6.653541	1.073303612	High
TCGA-HV-A5A5	0.791780822	0	3.995272	6.839868	0.736434126	Low
TCGA-IB-A6UF	1.824657534	0	4.886461	7.115464	1.004729594	Low
TCGA-HV-AA8V	2.520547945	0	5.352755	7.011249	1.083153295	High
TCGA-IB-A5SP	1.320547945	0	6.053211	7.181196	1.360195552	High
TCGA-2J-AABU	0.75890411	1	5.485529	7.328696	1.250300368	High
TCGA-HZ-8003	1.632876712	1	4.653051	6.324689	0.719338268	Low
TCGA-IB-7649	1.279452055	1	5.168272	6.569119	0.887017757	Low
TCGA-HV-A7OL	0.690410959	0	4.764983	6.711403	0.846582014	Low
TCGA-3E-AAAY	6.260273973	0	4.791307	6.945342	0.925016967	Low
TCGA-F2-7273	1.621917808	1	5.598924	6.837469	1.080882254	High
TCGA-IB-7897	1.331506849	1	4.578664	6.997594	0.895337512	Low
TCGA-IB-7893	0.320547945	1	5.010932	7.316191	1.110906354	High
TCGA-IB-A6UG	0.112328767	1	4.10693	6.973025	0.792692965	Low
TCGA-HZ-8637	1.416438356	1	3.678787	6.85041	0.685147943	Low
TCGA-2L-AAQL	0.8	1	4.482173	7.092818	0.904659824	Low
TCGA-H6-8124	1.073972603	0	5.146983	7.013355	1.031767184	High
TCGA-2J-AABF	1.893150685	1	5.674075	7.196659	1.248759645	High
TCGA-FB-AAQ3	0.084931507	1	4.729271	6.039865	0.662762752	Low
TCGA-3A-A9I5	4.915068493	0	4.412378	7.04835	0.875836676	Low
TCGA-HZ-8317	1.035616438	1	5.39931	6.484921	0.910186797	Low
TCGA-HZ-7919	1.624657534	1	6.681558	7.331993	1.66754466	High
TCGA-3A-A9I9	1.736986301	1	3.879948	6.495594	0.634641387	Low
GSM5570969	4.604536142	0	4.091463	6.202795	0.60231704	Low
GSM5570970	1.143027458	1	3.772826	6.45718	0.610244259	Low
GSM5570972	0.324263109	1	5.534734	7.135676	1.182090838	High
GSM5570983	2.04826197	0	2.883722	6.817491	0.559698196	Low
GSM5570988	1.602739726	1	5.382009	6.476428	0.903714491	Low
GSM5570993	1.621315544	1	5.05443	7.247673	1.09582178	High
GSM5570994	1.035616438	1	6.243086	6.762649	1.228665723	High

Table S6 (continued)

Table S6 (continued)

ID	futime	fustat	RAB27B	YKT6	RiskScore	Risk
GSM5571001	3.361643836	1	6.230114	6.537344	1.13152106	High
GSM5571006	2.818386852	0	5.04605	6.851723	0.951431212	Low
GSM5571008	1.037641948	1	4.141906	7.449718	0.945306339	Low
GSM5571014	2.904857016	0	3.317075	6.54712	0.564651067	Low
GSM5571015	2.030136986	1	5.179884	6.888685	0.995318684	Low
GSM5571016	2.075283896	1	3.547625	7.042543	0.710357574	Low
GSM5571022	0.098630137	1	5.335505	7.435096	1.252117558	High
GSM5571027	1.153836228	1	5.992579	7.026208	1.269431177	High
GSM5571030	1.906849315	1	5.789091	6.145422	0.886866463	Low
GSM5571036	0.887671233	1	4.485984	6.72315	0.795073956	Low
GSM5571037	1.813171216	0	4.498466	7.333843	0.988561819	Low
GSM5571040	2.383561644	1	3.544545	7.138075	0.734092524	Low
GSM5571043	2.276712329	1	6.044306	6.641417	1.122564217	High
GSM5571048	0.762018305	0	6.916101	6.912342	1.521924532	High
GSM5571051	1.134246575	1	5.832313	7.209134	1.302759475	High
GSM5571053	0.26211268	1	6.034894	6.436667	1.042199982	High
GSM5571054	0.221917808	1	5.498203	7.430662	1.299905445	High
GSM5571057	0.55890411	1	5.897075	6.800295	1.145908521	High
GSM5571065	0.805479452	1	4.142245	7.118925	0.841535015	Low
GSM5571066	1.167347191	1	5.990694	7.07061	1.288831674	High
GSM5571069	1.939726027	0	4.705338	6.649188	0.816493425	Low
GSM5571070	0.905234512	1	6.195461	7.173011	1.403348138	High
GSM5571073	0.632876712	1	5.24261	7.438642	1.2260618	High
GSM5571074	0.097278933	1	5.096255	7.113568	1.055864914	High
GSM5571083	1.742465753	0	4.869901	6.982778	0.955111231	Low
GSM5571087	1.734246575	0	5.500159	6.600851	0.971279325	Low
GSM5571088	0.637717447	0	4.155017	6.754245	0.742488401	Low
GSM5571091	0.731506849	1	4.979586	6.615288	0.861658288	Low
GSM5571092	0.135109629	0	5.224642	6.9628	1.032633208	High
GSM5571095	1.421917808	0	5.607451	7.031626	1.159652973	High
GSM5571097	2.734618884	1	3.929118	6.950838	0.753698041	Low
GSM5571100	0.65122841	1	4.807071	6.687343	0.847962367	Low
GSM5571104	1.347945205	0	5.053884	6.791556	0.933257454	Low
GSM5571106	0.378082192	1	5.665045	6.81651	1.090090533	High
GSM5571110	0.345205479	1	2.12718	7.511799	0.595984319	Low
GSM5571116	0.797260274	0	5.836845	7.694738	1.547114966	High

Table S6 (continued)

Table S6 (continued)

ID	futime	fustat	RAB27B	YKT6	RiskScore	Risk
GSM5571118	1.224657534	1	4.580119	6.868651	0.855932502	Low
GSM5571120	0.369863014	1	2.438876	7.236959	0.583053597	Low
GSM5571128	2.208219178	0	7.379961	7.209711	1.888560405	High
GSM5571135	1.684931507	0	6.290669	6.495358	1.131240211	High
GSM5571137	1.150684932	1	5.044753	7.247032	1.093035327	High
GSM5571142	0.120547945	1	2.890317	7.111275	0.621616464	Low
GSM5571144	0.980821918	1	6.739096	7.923916	2.082085598	High
GSM5571145	0.728767123	0	4.709206	7.013145	0.92887594	Low
GSM5571146	1.136986301	0	6.98136	7.213323	1.718583851	High
GSM5571148	1.224657534	0	4.609438	7.445291	1.055812929	High
GSM5571150	0.8	0	4.989372	7.335744	1.112805442	High
GSM5571154	0.523287671	0	7.039581	7.361977	1.836302272	High
GSM5571155	0.460273973	0	5.746206	7.270687	1.304067985	High
GSM5571159	0.260273973	0	3.544545	6.57157	0.601457691	Low
GSM5571162	0.717808219	0	6.786926	7.291995	1.686321541	High
GSM5571168	1.224657534	1	5.292716	6.627376	0.932808357	Low
GSM5571172	0.780821918	1	5.938613	6.442936	1.020661379	Low
GSM5571179	0.805479452	1	5.855502	7.005918	1.219645624	High
GSM5571184	1.167123288	1	4.955799	7.661043	1.237710763	High
GSM5571187	1.882191781	1	6.567957	6.932869	1.410171367	High
GSM5571190	1.8	1	5.469547	6.913426	1.076238639	High
GSM5571192	3.452054795	0	4.179763	7.059343	0.83152833	Low
GSM5571193	3.147945205	0	3.744856	6.098577	0.534326281	Low
GSM5571195	1.126027397	1	6.534371	7.074477	1.470306064	High
GSM5571196	0.895890411	1	4.127111	6.773212	0.742473642	Low
GSM5571197	1.750684932	1	6.055795	7.184355	1.362551931	High
GSM5571202	1.635616438	1	5.718705	6.830988	1.109846116	High
GSM5571205	5.589041096	0	4.399035	6.52869	0.72718412	Low
GSM5571209	4.084931507	1	4.720543	6.18903	0.697007188	Low
GSM1383781	6.561643836	0	4.751305	7.034415	0.945347597	Low
GSM1383782	0.41369863	1	5.257609	6.949277	1.035889619	High
GSM1383783	1.695890411	1	3.619841	7.411746	0.823003193	Low
GSM1383785	5.232876712	0	4.711721	7.532057	1.115564047	High
GSM1383786	1.44109589	1	4.189359	7.079072	0.839248247	Low
GSM1383788	3.717808219	0	4.378878	5.83552	0.567085646	Low
GSM1383789	1.684931507	1	6.333909	7.431394	1.588757031	High

Table S6 (continued)

Table S6 (continued)

ID	futime	fustat	RAB27B	YKT6	RiskScore	Risk
GSM1383790	1.306849315	1	4.781526	6.912871	0.912368804	Low
GSM1383794	2.594520548	1	4.018272	7.272001	0.862078374	Low
GSM1383795	2.476712329	1	4.752932	7.175966	0.993998893	Low
GSM1383796	4.446575342	0	3.529081	7.227401	0.754721578	Low
GSM1383799	4.068493151	0	3.804416	6.799795	0.69364197	Low
GSM1383802	0.24109589	1	5.966119	6.70085	1.124988631	High
GSM1383804	2.164383562	1	3.588475	7.12872	0.739429338	Low
GSM1383805	0.728767123	1	5.711764	7.019259	1.183865356	High
GSM1383808	2.509589041	1	4.037079	8.389653	1.283070632	High
GSM1383810	1.145205479	1	5.603044	6.849809	1.086657442	High
GSM1383813	1.473972603	1	5.221191	6.533556	0.887177486	Low
GSM1383815	0.369863014	1	5.33919	6.512414	0.905877612	Low
GSM1383818	3.032876712	0	4.744167	7.050701	0.949152896	Low
GSM1383824	2.750684932	0	5.405147	7.379223	1.248424033	High
GSM1383828	0.816438356	1	6.836619	7.40114	1.773331176	High
GSM1383829	2.397260274	0	4.03171	7.546281	0.952463536	Low
GSM1383830	1.273972603	1	6.309191	6.169536	1.013228819	Low
GSM1383832	1.991780822	0	5.97296	6.647957	1.106063473	High
GSM1383833	1.452054795	1	4.861971	6.64959	0.847864627	Low
GSM1383834	2.106849315	0	3.700213	6.318601	0.571176836	Low
GSM1383838	1.909589041	0	4.510845	6.81651	0.826531455	Low
GSM1383839	0.61369863	1	4.865453	7.077941	0.986572251	Low
GSM1527145	0.887671233	1	4.347289	6.705241	0.764235615	Low
GSM1527147	2.383561644	1	3.420458	6.964446	0.670351111	Low
GSM1527151	2.268493151	0	5.542847	6.848323	1.070524165	High
GSM1527155	0.55890411	1	5.902177	7.060486	1.25727713	High
GSM1527157	2.317808219	0	5.43851	7.029979	1.112966811	High
GSM1527159	0.805479452	1	4.389561	7.182541	0.913161109	Low
GSM1527161	1.939726027	0	5.008929	7.023456	1.001722288	Low
GSM1527165	1.791780822	0	5.76395	6.905956	1.151934351	High
GSM1527167	1.742465753	0	5.018108	7.019259	1.002448557	Low
GSM1527179	0.378082192	1	5.845713	7.151081	1.280533482	High
GSM1527181	0.871232877	0	6.68994	6.501265	1.24749552	High
GSM1527189	1.224657534	1	4.791807	6.974766	0.9347531	Low
GSM1527193	1.060273973	1	4.718611	6.878556	0.887924112	Low
GSM1527196	0.780821918	1	5.881364	6.925723	1.193096418	High

Table S6 (continued)

Table S6 (continued)

ID	futime	fustat	RAB27B	YKT6	RiskScore	Risk
GSM1527198	0.517808219	1	6.52176	6.997251	1.426581107	High
GSM1527202	0.805479452	1	6.050784	6.971697	1.262824948	High
GSM1527204	0.435616438	1	6.107837	7.759141	1.688821508	High
GSM1527205	1.767123288	1	5.24261	7.032745	1.062925778	High
GSM1527207	1.167123288	1	5.195687	7.790673	1.37216345	High
GSM1527212	3.77260274	1	3.659856	6.740385	0.656151521	Low
GSM1527213	1.8	1	5.60276	6.95704	1.128352781	High
GSM1527216	3.147945205	0	3.946904	5.879736	0.519297252	Low
GSM1527219	0.895890411	1	4.180119	7.064449	0.833094325	Low
GSM1527220	1.750684932	1	6.448407	7.155069	1.481723766	High
GSM1527223	0.764383562	1	5.726772	6.514943	0.994993594	Low
GSM1527225	1.635616438	1	5.620215	6.769115	1.060603825	High
GSM1527228	5.589041096	0	4.340468	6.601674	0.735689974	Low
GSM1527232	4.084931507	1	4.806077	6.212039	0.717232959	Low
TCGA-HZ-8002	1.002739726	1	5.595508	7.326875	1.282891219	High
TCGA-FB-AAPY	2.901369863	1	4.700625	6.570707	0.793363496	Low
TCGA-IB-A7LX	0.684931507	1	6.149104	7.222862	1.412386037	High
TCGA-3A-A9IX	2.84109589	0	5.120215	6.711182	0.921787068	Low
TCGA-3A-A9IH	2.797260274	0	5.28352	7.189427	1.134227032	High
TCGA-IB-7890	1.638356164	1	5.806062	7.369715	1.369816913	High
TCGA-HZ-A77O	0.438356164	1	4.014316	7.262956	0.858524987	Low
TCGA-IB-A7M4	1.323287671	0	5.600911	7.008493	1.148452094	High
TCGA-HZ-8636	1.493150685	1	5.765559	7.397753	1.37002274	High
TCGA-IB-AAUS	0.616438356	0	4.340841	7.053784	0.862587433	Low
TCGA-S4-A8RO	1.438356164	0	5.289167	7.152668	1.121172339	High
TCGA-FB-A4P6	2.101369863	0	6.042074	6.863733	1.213227524	High
TCGA-IB-A5SO	1	1	5.777735	6.647811	1.055422147	High
TCGA-FB-AAPU	1.043835616	1	6.264817	6.853363	1.27513274	High
TCGA-F2-A8YN	1.416438356	0	6.413581	6.906287	1.346274337	High
TCGA-HZ-A49I	0.843835616	1	5.99632	6.752226	1.153830915	High
TCGA-2J-AAB8	0.219178082	0	5.460966	7.284755	1.223892692	High
TCGA-US-A774	1.904109589	1	4.945982	7.033375	0.990163957	Low
TCGA-2J-AABK	1.326027397	0	4.670404	6.508173	0.770497922	Low
TCGA-3A-A9I7	3.624657534	0	4.882796	7.10655	1.000704154	Low
TCGA-IB-AAUU	0.671232877	0	5.241748	7.21341	1.132435821	High
TCGA-IB-7651	1.652054795	1	4.669383	7.044954	0.930400391	Low

Table S6 (continued)

Table S6 (continued)

ID	futime	fustat	RAB27B	YKT6	RiskScore	Risk
TCGA-S4-A8RP	1.923287671	1	5.923653	6.893968	1.191868771	High
TCGA-HZ-A4BH	0.531506849	0	5.49934	7.037329	1.132244375	High
TCGA-HV-AA8X	1.457534247	1	6.664182	7.043255	1.500227005	High
TCGA-2J-AAB9	1.717808219	1	4.112415	7.031184	0.810142213	Low
TCGA-FB-AAQ1	0.336986301	1	5.298479	6.954011	1.047835413	High
TCGA-LB-A9Q5	0.857534247	1	4.992997	6.230769	0.755071834	Low
TCGA-2J-AABA	1.663013699	1	6.330543	7.006112	1.366897793	High
TCGA-F2-6880	0.808219178	0	2.94564	5.77974	0.394333535	Low
TCGA-LB-A7SX	1.076712329	1	4.199546	6.903066	0.79079277	Low
TCGA-Z5-AAPL	1.279452055	0	3.610835	6.784612	0.65865123	Low
TCGA-2J-AABT	0.873972603	0	3.975388	6.988004	0.772136416	Low
TCGA-IB-AAUR	0.926027397	0	4.552911	6.913821	0.863985879	Low
TCGA-XD-AAUI	1.002739726	1	4.559322	7.214178	0.96174569	Low
TCGA-IB-AAUQ	0.501369863	1	4.944021	7.414453	1.131672278	High
TCGA-IB-7645	4.115068493	1	6.695121	7.496912	1.772902592	High
TCGA-HZ-A49G	1.808219178	0	4.668161	6.491489	0.765577286	Low
TCGA-XN-A8T3	2.605479452	0	4.411708	7.017908	0.866368565	Low
TCGA-FB-AAQ6	0.668493151	1	4.9436	6.650573	0.864923853	Low
TCGA-IB-7647	1.824657534	1	5.576514	7.585474	1.398679565	High
TCGA-FB-A4P5	0.490410959	1	4.644609	6.855319	0.865205013	Low
TCGA-HZ-8005	0.328767123	1	4.711267	7.773274	1.214222477	High
TCGA-XD-AAUG	1.150684932	0	4.308301	6.669916	0.747773815	Low
TCGA-IB-7887	0.301369863	1	6.126504	7.327249	1.457293735	High
TCGA-HZ-7923	0.860273973	0	5.106751	6.651551	0.899743064	Low
TCGA-HZ-A49H	1.345205479	0	5.423398	6.517526	0.926019782	Low
TCGA-S4-A8RM	2.019178082	0	7.310451	6.993417	1.721267226	High
TCGA-OE-A75W	0.731506849	1	4.357423	7.064328	0.869242327	Low
TCGA-IB-7888	3.649315068	1	5.87381	7.053919	1.245872241	High
TCGA-LB-A8F3	1.038356164	0	4.109818	6.838214	0.756502761	Low
TCGA-IB-AAUW	0.630136986	1	6.557728	6.78018	1.333153328	High
TCGA-IB-7644	1.079452055	1	7.065153	6.851409	1.543857447	High
TCGA-Q3-AA2A	0.260273973	0	5.115558	6.488333	0.851335366	Low
TCGA-IB-A5ST	1.739726027	0	3.593623	7.288727	0.783208322	Low
TCGA-Q3-A5QY	1.139726027	0	3.174349	6.611299	0.558111261	Low
TCGA-HV-A5A6	5.578082192	1	4.244214	7.520789	0.993310351	Low
TCGA-IB-7654	1.304109589	1	4.75943	6.375295	0.751178348	Low

Table S6 (continued)

Table S6 (continued)

ID	futime	fustat	RAB27B	YKT6	RiskScore	Risk
TCGA-IB-7652	3.057534247	0	5.798379	7.022626	1.210144242	High
TCGA-3A-A9IZ	0.843835616	1	5.494135	7.154349	1.178352973	High
TCGA-IB-A5SS	1.260273973	1	6.02152	7.435619	1.476282448	High
TCGA-FB-AAPZ	1.961643836	0	4.608061	7.328193	1.012871504	Low
TCGA-L1-A7W4	0.761643836	1	5.000148	6.921101	0.964263967	Low
TCGA-F2-A44H	1.605479452	0	3.565652	6.341665	0.557545561	Low
TCGA-FB-AAQ0	1.295890411	1	5.427651	6.590871	0.951192029	Low
TCGA-YB-A89D	0.95890411	0	5.262454	7.046639	1.07322846	High
TCGA-M8-A5N4	1.6	0	5.558242	7.007417	1.136330792	High
TCGA-PZ-A5RE	1.287671233	1	5.741976	7.302889	1.31758683	High
TCGA-2L-AAQJ	1.079452055	1	5.837807	6.766855	1.11652605	High
TCGA-HV-A5A4	0.635616438	0	5.194174	6.486672	0.867030387	Low
TCGA-FB-AAQ2	0.419178082	1	5.443501	7.127732	1.153282899	High
TCGA-F2-7276	0.591780822	1	4.504886	7.0192	0.886347473	Low
TCGA-FB-A78T	1.02739726	1	5.945299	6.757733	1.142010097	High
TCGA-IB-AAUP	1.180821918	0	3.64894	7.066973	0.734109059	Low
TCGA-YY-A8LH	5.523287671	0	5.913722	7.756375	1.610442575	High
GSM5570968	4.2	1	6.067154	6.785044	1.187224272	High
GSM5570973	2.950684932	1	5.947686	7.192174	1.331339024	High
GSM5570975	0.383711345	1	6.430696	7.49164	1.660891057	High
GSM5570976	0.197260274	1	5.410384	6.984494	1.087938264	High
GSM5570977	0.686356913	1	4.608798	6.48814	0.753867636	Low
GSM5570979	0.202664443	1	4.508503	7.350892	0.996904889	Low
GSM5570987	0.424244234	1	6.242507	7.323948	1.496662351	High
GSM5570997	0.686356913	1	5.72597	7.13919	1.239092708	High
GSM5570998	1.315068493	1	5.542351	7.027312	1.139958932	High
GSM5571000	0.729591995	1	6.20676	7.068971	1.356587526	High
GSM5571004	2.529252248	1	4.448812	6.696126	0.78056269	Low
GSM5571005	0.230136986	1	3.894984	6.892246	0.732303909	Low
GSM5571009	0.953424658	1	6.169073	7.200119	1.407857154	High
GSM5571010	0.567123288	1	5.873903	8.587764	2.137030521	High
GSM5571011	1.237604199	1	3.979693	7.025061	0.783075476	Low
GSM5571012	0.878212586	1	5.105512	7.056575	1.037207205	High
GSM5571018	0.140514014	1	6.519556	7.03103	1.442870642	High
GSM5571019	3.287671233	0	4.429337	6.708359	0.780276331	Low
GSM5571020	0.591780173	1	4.92114	7.298452	1.080478498	High

Table S6 (continued)

Table S6 (continued)

ID	futime	fustat	RAB27B	YKT6	RiskScore	Risk
GSM5571023	0.135109629	1	5.65308	6.784569	1.074822661	High
GSM5571026	1.084931507	1	4.530181	7.156736	0.935944063	Low
GSM5571031	0.889021356	0	5.646089	7.242002	1.260350643	High
GSM5571044	0.875510393	0	4.404385	7.192775	0.919718032	Low
GSM5571047	2.268493151	0	5.682986	6.945747	1.145710058	High
GSM5571052	0.686356913	0	5.477752	7.108905	1.155118842	High
GSM5571061	2.317808219	0	5.100403	6.873612	0.971363886	Low
GSM5571062	0.232388561	1	5.275347	7.454271	1.242537176	High
GSM5571079	1.791780822	0	5.58477	6.949277	1.120431697	High
GSM5571080	1.494312492	0	5.522052	6.683254	1.005108597	Low
GSM5571084	1.434864256	0	3.663051	6.876555	0.688873934	Low
GSM5571096	1.178155962	1	4.736816	7.202418	0.999421345	Low
GSM5571098	3.419178082	1	3.066056	6.578766	0.537616505	Low
GSM5571101	0.526027397	1	4.521691	7.232461	0.959255545	Low
GSM5571102	0.062150429	1	5.588994	6.975869	1.13210781	High
GSM5571108	0.871232877	0	6.434975	6.46228	1.157524229	High
GSM5571114	0.846575342	1	4.439439	7.547105	1.050598638	High
GSM5571122	1.060273973	1	4.75393	6.79017	0.868063051	Low
GSM5571125	1.284931507	1	3.450228	6.752938	0.626744235	Low
GSM5571127	2.268493151	0	6.382287	6.804139	1.289048313	High
GSM5571130	2.052054795	0	4.148678	6.632522	0.710286762	Low
GSM5571132	0.402739726	1	5.631785	7.259381	1.263737062	High
GSM5571133	0.780821918	1	4.806718	7.200709	1.015704599	Low
GSM5571139	0.791780822	1	4.269715	6.844981	0.787946369	Low
GSM5571140	0.169863014	1	2.745652	6.505798	0.485240422	Low
GSM5571151	0.057534247	0	5.271713	7.224826	1.145192026	High
GSM5571153	0.534246575	0	4.011027	6.763621	0.719658304	Low
GSM5571157	0.235616438	0	4.63073	6.792878	0.843595814	Low
GSM5571161	0.37260274	0	6.403066	7.622827	1.727846889	High
GSM5571163	0.065753425	0	5.1453	6.929264	1.001289686	Low
GSM5571165	0.252054795	0	6.337798	6.691265	1.225722097	High
GSM5571167	0.032876712	0	3.113103	6.842106	0.596489858	Low
GSM5571174	0.517808219	1	6.281343	6.941076	1.320311829	High
GSM5571176	0.073972603	1	3.758216	7.32526	0.825277275	Low
GSM5571177	0.484931507	1	3.268706	6.639633	0.576601992	Low
GSM5571181	0.435616438	1	5.820548	7.737415	1.564390506	High

Table S6 (continued)

Table S6 (continued)

ID	futime	fustat	RAB27B	YKT6	RiskScore	Risk
GSM5571182	1.767123288	1	5.199602	6.98011	1.032720479	High
GSM5571186	2.630136986	1	6.470181	6.620502	1.234151211	High
GSM5571189	3.77260274	1	3.734515	6.708359	0.660521235	Low
GSM5571200	0.764383562	1	5.451716	6.723612	1.002428602	Low
GSM5571204	5.819178082	0	3.294266	6.721362	0.597068157	Low
GSM5571207	5.564383562	0	3.773208	6.574891	0.636101399	Low
GSM5571211	0.263013699	1	4.385792	6.516219	0.721705465	Low
GSM1383778	1.112328767	1	5.431578	7.504037	1.312752199	High
GSM1383779	2.989041096	1	4.131995	6.672009	0.717346138	Low
GSM1383780	0.509589041	1	7.684353	7.226782	2.043805138	High
GSM1383784	1.030136986	1	6.540477	7.313757	1.601764908	High
GSM1383787	2.328767123	1	3.744023	7.184355	0.782700345	Low
GSM1383791	3.101369863	1	5.452534	7.173011	1.174340177	High
GSM1383792	0.761643836	1	4.304537	7.479515	0.993257299	Low
GSM1383793	4.756164384	0	4.367894	7.497797	1.0149695	Low
GSM1383797	0.643835616	1	3.307137	6.738049	0.602439785	Low
GSM1383798	3.106849315	0	4.87622	7.043578	0.977238425	Low
GSM1383800	2.389041096	1	6.931281	6.971257	1.559461109	High
GSM1383801	1.328767123	1	6.432537	6.845457	1.32377643	High
GSM1383803	2.608219178	1	6.205634	7.0997	1.370960881	High
GSM1383806	0.871232877	1	5.332205	7.381237	1.227646469	High
GSM1383807	1.767123288	1	4.783515	7.236959	1.023031303	High
GSM1383809	1.602739726	1	5.65308	6.857599	1.102792247	High
GSM1383811	2.487671233	0	5.490832	6.737105	1.016689869	Low
GSM1383812	2.750684932	0	5.193675	6.700062	0.934506278	Low
GSM1383814	2.356164384	0	7.481897	6.907415	1.740062144	High
GSM1383816	1.646575342	1	5.076586	6.411026	0.820789282	Low
GSM1383817	2.22739726	0	6.880829	6.519109	1.314150242	High
GSM1383819	2.712328767	1	3.774698	6.720928	0.669871948	Low
GSM1383820	1.284931507	1	4.204658	7.071681	0.840145705	Low
GSM1383821	1.334246575	1	3.328279	6.62694	0.582292493	Low
GSM1383822	1.350684932	1	5.431019	6.679697	0.982175339	Low
GSM1383823	0.726027397	1	6.735951	6.921695	1.462380605	High
GSM1383825	1	1	3.476837	6.900354	0.664327847	Low
GSM1383826	1.8	0	5.186934	6.925723	1.010077547	Low
GSM1383827	0.945205479	0	5.492739	7.159769	1.180206595	High

Table S6 (continued)

Table S6 (continued)

ID	futime	fustat	RAB27B	YKT6	RiskScore	Risk
GSM1383831	2.438356164	0	4.364343	7.194497	0.911481028	Low
GSM1383835	1.736986301	1	4.708537	6.145422	0.684423402	Low
GSM1383836	1.865753425	0	5.317248	6.76121	0.98354286	Low
GSM1383837	1.117808219	1	4.664508	6.52743	0.774638994	Low
GSM1383840	0.309589041	1	5.261655	7.135147	1.106956243	High
GSM1527105	4.2	1	6.115467	6.709689	1.169639969	High
GSM1527109	0.221917808	1	5.45892	7.41908	1.282481977	High
GSM1527137	3.287671233	0	4.067754	6.972203	0.785053899	Low
GSM1527139	0.098630137	1	5.311608	7.412488	1.235101129	High
GSM1527141	1.084931507	1	4.396632	7.259381	0.939772557	Low
GSM1527149	2.276712329	1	5.704832	6.60044	1.019992203	Low
GSM1527163	0.632876712	1	5.266567	7.435096	1.231588474	High
GSM1527169	1.734246575	0	5.80442	6.904367	1.16251801	High
GSM1527171	0.731506849	1	5.008929	6.768635	0.9158366	Low
GSM1527175	0.526027397	1	4.717613	7.295142	1.027813478	High
GSM1527177	1.347945205	0	5.487023	6.925228	1.085254537	High
GSM1527183	0.345205479	1	2.588745	7.41908	0.644375953	Low
GSM1527185	0.846575342	1	4.895578	7.375679	1.103448495	High
GSM1527191	0.369863014	1	2.516809	7.217563	0.590013016	Low
GSM1527199	0.073972603	1	3.971532	7.452788	0.908443919	Low
GSM1527200	0.484931507	1	3.503838	6.404797	0.561678183	Low
GSM1527209	2.630136986	1	7.157618	6.852665	1.579169571	High
GSM1527215	3.452054795	0	4.055088	6.977436	0.784115136	Low
GSM1527218	1.126027397	1	6.979752	7.285289	1.761966325	High
GSM1527227	5.819178082	0	4.032869	6.550006	0.671068435	Low
GSM1527230	5.564383562	0	3.647232	6.675558	0.639419266	Low

Table S7 Detailed risk score and risk group in training cohort

ID	futime	fustat	RAB27B	YKT6	RiskScore	Risk
TCGA-3A-A9IB	0.6136986	1	5.493612	7.266514	1.2256219	High
TCGA-IB-7646	0.3972603	1	5.979517	7.365331	1.425795	High
TCGA-IB-AAUO	0.6547945	1	4.829855	6.883596	0.9135477	Low
TCGA-FB-AAPQ	3.0958904	1	5.619848	6.599973	0.9992518	Low
TCGA-FB-AAPS	0.6246575	0	4.646268	7.108799	0.9462726	Low
TCGA-IB-8126	1.2657534	0	3.78484	5.745986	0.476546	Low
TCGA-US-A77J	1.5561644	1	3.908971	6.936349	0.7462523	Low
TCGA-3E-AAAZ	5.9780822	1	6.612657	6.951844	1.4349143	High
TCGA-HZ-8001	1.9342466	0	4.614248	7.204732	0.9712642	Low
TCGA-IB-7889	1.3178082	1	5.096673	7.336678	1.1421857	High
TCGA-FB-AAPP	1.3287671	1	6.527393	7.708237	1.834431	High
TCGA-2L-AAQE	1.8739726	1	4.520065	7.415101	1.022509	High
TCGA-IB-7886	0.3369863	1	6.157771	6.92574	1.2748653	High
TCGA-2J-AABR	1.2	0	5.215802	6.913864	1.01286	Low
TCGA-XD-AAUL	1.3643836	0	6.030056	7.172515	1.3485395	High
TCGA-2J-AABE	1.8520548	0	5.756895	6.886078	1.141974	High
TCGA-IB-AAUV	1.1068493	0	3.1106	7.151879	0.664763	Low
TCGA-FB-A5VM	1.3643836	1	3.344197	7.562087	0.8121993	Low
TCGA-IB-8127	1.430137	0	4.99838	7.23538	1.0765263	High
TCGA-2J-AABV	1.7863014	1	2.57643	5.673492	0.347681	Low
TCGA-2J-AABO	1.2054795	0	4.275535	7.336499	0.937978	Low
TCGA-IB-A5SQ	0.6	1	4.885892	7.188294	1.030662	High
TCGA-F2-A44G	0.6383562	1	6.046691	6.724236	1.1564103	High
TCGA-2L-AAQA	0.3917808	1	6.362281	6.914232	1.333536	High
TCGA-HZ-7920	0.6465753	1	5.378002	7.084318	1.1181037	High
TCGA-HZ-7918	2.6547945	0	4.869948	6.985508	0.9560397	Low
TCGA-US-A779	1.4	1	5.902853	6.896328	1.1869236	High
TCGA-XD-AAUH	1.0821918	0	4.07746	6.869629	0.7589968	Low
TCGA-HZ-7924	2.3013699	0	6.993199	6.894101	1.5404078	High
TCGA-F2-A7TX	0.260274	1	4.850137	7.155576	1.0101694	Low
TCGA-HZ-7925	1.6821918	1	5.365092	7.184891	1.154788	High
TCGA-3A-A9IC	2.0219178	1	5.656979	7.312904	1.2955593	High
TCGA-FB-A545	2.0054795	1	5.676702	7.334995	1.3118562	High
TCGA-2J-AAB6	0.8027397	1	4.549111	7.592101	1.0958034	High
TCGA-IB-7891	2.5013699	1	5.224879	6.906055	1.0122826	Low

Table S7 (continued)

Table S7 (continued)

ID	futime	fustat	RAB27B	YKT6	RiskScore	Risk
TCGA-3A-A9IU	1.2547945	1	5.450105	6.824638	1.0382921	High
TCGA-2L-AAQI	0.2821918	1	5.754681	6.994678	1.1858141	High
TCGA-3A-A9J0	2.0356164	0	3.766631	7.197445	0.7905872	Low
TCGA-HV-A5A3	0.3506849	1	6.431794	6.840458	1.3212152	High
TCGA-HZ-7926	1.4191781	1	4.359978	7.27443	0.936493	Low
TCGA-IB-AAUN	0.3945205	1	6.096439	6.931095	1.2586212	High
TCGA-IB-7885	3.4438356	0	5.477035	7.331325	1.2489107	High
TCGA-RB-AA9M	0.7835616	0	5.399335	7.146408	1.1486544	High
TCGA-HZ-8315	0.8191781	1	5.83939	6.653541	1.0733036	High
TCGA-HV-A5A5	0.7917808	0	3.995272	6.839868	0.7364341	Low
TCGA-IB-A6UF	1.8246575	0	4.886461	7.115464	1.0047296	Low
TCGA-HV-AA8V	2.5205479	0	5.352755	7.011249	1.0831533	High
TCGA-IB-A5SP	1.3205479	0	6.053211	7.181196	1.3601956	High
TCGA-2J-AABU	0.7589041	1	5.485529	7.328696	1.2503004	High
TCGA-HZ-8003	1.6328767	1	4.653051	6.324689	0.7193383	Low
TCGA-IB-7649	1.2794521	1	5.168272	6.569119	0.8870178	Low
TCGA-HV-A7OL	0.690411	0	4.764983	6.711403	0.846582	Low
TCGA-3E-AAAY	6.260274	0	4.791307	6.945342	0.925017	Low
TCGA-F2-7273	1.6219178	1	5.598924	6.837469	1.0808823	High
TCGA-IB-7897	1.3315068	1	4.578664	6.997594	0.8953375	Low
TCGA-IB-7893	0.3205479	1	5.010932	7.316191	1.1109064	High
TCGA-IB-A6UG	0.1123288	1	4.10693	6.973025	0.792693	Low
TCGA-HZ-8637	1.4164384	1	3.678787	6.85041	0.6851479	Low
TCGA-2L-AAQL	0.8	1	4.482173	7.092818	0.9046598	Low
TCGA-H6-8124	1.0739726	0	5.146983	7.013355	1.0317672	High
TCGA-2J-AABF	1.8931507	1	5.674075	7.196659	1.2487596	High
TCGA-FB-AAQ3	0.0849315	1	4.729271	6.039865	0.6627628	Low
TCGA-3A-A9I5	4.9150685	0	4.412378	7.04835	0.8758367	Low
TCGA-HZ-8317	1.0356164	1	5.39931	6.484921	0.9101868	Low
TCGA-HZ-7919	1.6246575	1	6.681558	7.331993	1.6675447	High
TCGA-3A-A9I9	1.7369863	1	3.879948	6.495594	0.6346414	Low
GSM5570969	4.6045361	0	4.091463	6.202795	0.602317	Low
GSM5570970	1.1430275	1	3.772826	6.45718	0.6102443	Low
GSM5570972	0.3242631	1	5.534734	7.135676	1.1820908	High
GSM5570983	2.048262	0	2.883722	6.817491	0.5596982	Low

Table S7 (continued)

Table S7 (continued)

ID	futime	fustat	RAB27B	YKT6	RiskScore	Risk
GSM5570988	1.6027397	1	5.382009	6.476428	0.9037145	Low
GSM5570993	1.6213155	1	5.05443	7.247673	1.0958218	High
GSM5570994	1.0356164	1	6.243086	6.762649	1.2286657	High
GSM5571001	3.3616438	1	6.230114	6.537344	1.1315211	High
GSM5571006	2.8183869	0	5.04605	6.851723	0.9514312	Low
GSM5571008	1.0376419	1	4.141906	7.449718	0.9453063	Low
GSM5571014	2.904857	0	3.317075	6.54712	0.5646511	Low
GSM5571015	2.030137	1	5.179884	6.888685	0.9953187	Low
GSM5571016	2.0752839	1	3.547625	7.042543	0.7103576	Low
GSM5571022	0.0986301	1	5.335505	7.435096	1.2521176	High
GSM5571027	1.1538362	1	5.992579	7.026208	1.2694312	High
GSM5571030	1.9068493	1	5.789091	6.145422	0.8868665	Low
GSM5571036	0.8876712	1	4.485984	6.72315	0.795074	Low
GSM5571037	1.8131712	0	4.498466	7.333843	0.9885618	Low
GSM5571040	2.3835616	1	3.544545	7.138075	0.7340925	Low
GSM5571043	2.2767123	1	6.044306	6.641417	1.1225642	High
GSM5571048	0.7620183	0	6.916101	6.912342	1.5219245	High
GSM5571051	1.1342466	1	5.832313	7.209134	1.3027595	High
GSM5571053	0.2621127	1	6.034894	6.436667	1.0422	High
GSM5571054	0.2219178	1	5.498203	7.430662	1.2999054	High
GSM5571057	0.5589041	1	5.897075	6.800295	1.1459085	High
GSM5571065	0.8054795	1	4.142245	7.118925	0.841535	Low
GSM5571066	1.1673472	1	5.990694	7.07061	1.2888317	High
GSM5571069	1.939726	0	4.705338	6.649188	0.8164934	Low
GSM5571070	0.9052345	1	6.195461	7.173011	1.4033481	High
GSM5571073	0.6328767	1	5.24261	7.438642	1.2260618	High
GSM5571074	0.0972789	1	5.096255	7.113568	1.0558649	High
GSM5571083	1.7424658	0	4.869901	6.982778	0.9551112	Low
GSM5571087	1.7342466	0	5.500159	6.600851	0.9712793	Low
GSM5571088	0.6377174	0	4.155017	6.754245	0.7424884	Low
GSM5571091	0.7315068	1	4.979586	6.615288	0.8616583	Low
GSM5571092	0.1351096	0	5.224642	6.9628	1.0326332	High
GSM5571095	1.4219178	0	5.607451	7.031626	1.159653	High
GSM5571097	2.7346189	1	3.929118	6.950838	0.753698	Low
GSM5571100	0.6512284	1	4.807071	6.687343	0.8479624	Low

Table S7 (continued)

Table S7 (continued)

ID	futime	fustat	RAB27B	YKT6	RiskScore	Risk
GSM5571104	1.3479452	0	5.053884	6.791556	0.9332575	Low
GSM5571106	0.3780822	1	5.665045	6.81651	1.0900905	High
GSM5571110	0.3452055	1	2.12718	7.511799	0.5959843	Low
GSM5571116	0.7972603	0	5.836845	7.694738	1.547115	High
GSM5571118	1.2246575	1	4.580119	6.868651	0.8559325	Low
GSM5571120	0.369863	1	2.438876	7.236959	0.5830536	Low
GSM5571128	2.2082192	0	7.379961	7.209711	1.8885604	High
GSM5571135	1.6849315	0	6.290669	6.495358	1.1312402	High
GSM5571137	1.1506849	1	5.044753	7.247032	1.0930353	High
GSM5571142	0.1205479	1	2.890317	7.111275	0.6216165	Low
GSM5571144	0.9808219	1	6.739096	7.923916	2.0820856	High
GSM5571145	0.7287671	0	4.709206	7.013145	0.9288759	Low
GSM5571146	1.1369863	0	6.98136	7.213323	1.7185839	High
GSM5571148	1.2246575	0	4.609438	7.445291	1.0558129	High
GSM5571150	0.8	0	4.989372	7.335744	1.1128054	High
GSM5571154	0.5232877	0	7.039581	7.361977	1.8363023	High
GSM5571155	0.460274	0	5.746206	7.270687	1.304068	High
GSM5571159	0.260274	0	3.544545	6.57157	0.6014577	Low
GSM5571162	0.7178082	0	6.786926	7.291995	1.6863215	High
GSM5571168	1.2246575	1	5.292716	6.627376	0.9328084	Low
GSM5571172	0.7808219	1	5.938613	6.442936	1.0206614	Low
GSM5571179	0.8054795	1	5.855502	7.005918	1.2196456	High
GSM5571184	1.1671233	1	4.955799	7.661043	1.2377108	High
GSM5571187	1.8821918	1	6.567957	6.932869	1.4101714	High
GSM5571190	1.8	1	5.469547	6.913426	1.0762386	High
GSM5571192	3.4520548	0	4.179763	7.059343	0.8315283	Low
GSM5571193	3.1479452	0	3.744856	6.098577	0.5343263	Low
GSM5571195	1.1260274	1	6.534371	7.074477	1.4703061	High
GSM5571196	0.8958904	1	4.127111	6.773212	0.7424736	Low
GSM5571197	1.7506849	1	6.055795	7.184355	1.3625519	High
GSM5571202	1.6356164	1	5.718705	6.830988	1.1098461	High
GSM5571205	5.5890411	0	4.399035	6.52869	0.7271841	Low
GSM5571209	4.0849315	1	4.720543	6.18903	0.6970072	Low
GSM1383781	6.5616438	0	4.751305	7.034415	0.9453476	Low
GSM1383782	0.4136986	1	5.257609	6.949277	1.0358896	High

Table S7 (continued)

Table S7 (continued)

ID	futime	fustat	RAB27B	YKT6	RiskScore	Risk
GSM1383783	1.6958904	1	3.619841	7.411746	0.8230032	Low
GSM1383785	5.2328767	0	4.711721	7.532057	1.115564	High
GSM1383786	1.4410959	1	4.189359	7.079072	0.8392482	Low
GSM1383788	3.7178082	0	4.378878	5.83552	0.5670856	Low
GSM1383789	1.6849315	1	6.333909	7.431394	1.588757	High
GSM1383790	1.3068493	1	4.781526	6.912871	0.9123688	Low
GSM1383794	2.5945205	1	4.018272	7.272001	0.8620784	Low
GSM1383795	2.4767123	1	4.752932	7.175966	0.9939989	Low
GSM1383796	4.4465753	0	3.529081	7.227401	0.7547216	Low
GSM1383799	4.0684932	0	3.804416	6.799795	0.693642	Low
GSM1383802	0.2410959	1	5.966119	6.70085	1.1249886	High
GSM1383804	2.1643836	1	3.588475	7.12872	0.7394293	Low
GSM1383805	0.7287671	1	5.711764	7.019259	1.1838654	High
GSM1383808	2.509589	1	4.037079	8.389653	1.2830706	High
GSM1383810	1.1452055	1	5.603044	6.849809	1.0866574	High
GSM1383813	1.4739726	1	5.221191	6.533556	0.8871775	Low
GSM1383815	0.369863	1	5.33919	6.512414	0.9058776	Low
GSM1383818	3.0328767	0	4.744167	7.050701	0.9491529	Low
GSM1383824	2.7506849	0	5.405147	7.379223	1.248424	High
GSM1383828	0.8164384	1	6.836619	7.40114	1.7733312	High
GSM1383829	2.3972603	0	4.03171	7.546281	0.9524635	Low
GSM1383830	1.2739726	1	6.309191	6.169536	1.0132288	Low
GSM1383832	1.9917808	0	5.97296	6.647957	1.1060635	High
GSM1383833	1.4520548	1	4.861971	6.64959	0.8478646	Low
GSM1383834	2.1068493	0	3.700213	6.318601	0.5711768	Low
GSM1383838	1.909589	0	4.510845	6.81651	0.8265315	Low
GSM1383839	0.6136986	1	4.865453	7.077941	0.9865723	Low
GSM1527145	0.8876712	1	4.347289	6.705241	0.7642356	Low
GSM1527147	2.3835616	1	3.420458	6.964446	0.6703511	Low
GSM1527151	2.2684932	0	5.542847	6.848323	1.0705242	High
GSM1527155	0.5589041	1	5.902177	7.060486	1.2572771	High
GSM1527157	2.3178082	0	5.43851	7.029979	1.1129668	High
GSM1527159	0.8054795	1	4.389561	7.182541	0.9131611	Low
GSM1527161	1.939726	0	5.008929	7.023456	1.0017223	Low
GSM1527165	1.7917808	0	5.76395	6.905956	1.1519344	High

Table S7 (continued)

Table S7 (continued)

ID	futime	fustat	RAB27B	YKT6	RiskScore	Risk
GSM1527167	1.7424658	0	5.018108	7.019259	1.0024486	Low
GSM1527179	0.3780822	1	5.845713	7.151081	1.2805335	High
GSM1527181	0.8712329	0	6.68994	6.501265	1.2474955	High
GSM1527189	1.2246575	1	4.791807	6.974766	0.9347531	Low
GSM1527193	1.060274	1	4.718611	6.878556	0.8879241	Low
GSM1527196	0.7808219	1	5.881364	6.925723	1.1930964	High
GSM1527198	0.5178082	1	6.52176	6.997251	1.4265811	High
GSM1527202	0.8054795	1	6.050784	6.971697	1.2628249	High
GSM1527204	0.4356164	1	6.107837	7.759141	1.6888215	High
GSM1527205	1.7671233	1	5.24261	7.032745	1.0629258	High
GSM1527207	1.1671233	1	5.195687	7.790673	1.3721635	High
GSM1527212	3.7726027	1	3.659856	6.740385	0.6561515	Low
GSM1527213	1.8	1	5.60276	6.95704	1.1283528	High
GSM1527216	3.1479452	0	3.946904	5.879736	0.5192973	Low
GSM1527219	0.8958904	1	4.180119	7.064449	0.8330943	Low
GSM1527220	1.7506849	1	6.448407	7.155069	1.4817238	High
GSM1527223	0.7643836	1	5.726772	6.514943	0.9949936	Low
GSM1527225	1.6356164	1	5.620215	6.769115	1.0606038	High
GSM1527228	5.5890411	0	4.340468	6.601674	0.73569	Low
GSM1527232	4.0849315	1	4.806077	6.212039	0.717233	Low

Table S8 Detailed risk score and risk group in testing cohort

ID	futime	fustat	RAB27B	YKT6	RiskScore	Risk
TCGA-HZ-8002	1.0027397	1	5.595508	7.326875	1.2828912	High
TCGA-FB-AAPY	2.9013699	1	4.700625	6.570707	0.7933635	Low
TCGA-IB-A7LX	0.6849315	1	6.149104	7.222862	1.412386	High
TCGA-3A-A9IX	2.8410959	0	5.120215	6.711182	0.9217871	Low
TCGA-3A-A9IH	2.7972603	0	5.28352	7.189427	1.134227	High
TCGA-IB-7890	1.6383562	1	5.806062	7.369715	1.3698169	High
TCGA-HZ-A77O	0.4383562	1	4.014316	7.262956	0.858525	Low
TCGA-IB-A7M4	1.3232877	0	5.600911	7.008493	1.1484521	High
TCGA-HZ-8636	1.4931507	1	5.765559	7.397753	1.3700227	High
TCGA-IB-AAUS	0.6164384	0	4.340841	7.053784	0.8625874	Low
TCGA-S4-A8RO	1.4383562	0	5.289167	7.152668	1.1211723	High
TCGA-FB-A4P6	2.1013699	0	6.042074	6.863733	1.2132275	High
TCGA-IB-A5SO	1	1	5.777735	6.647811	1.0554221	High
TCGA-FB-AAPU	1.0438356	1	6.264817	6.853363	1.2751327	High
TCGA-F2-A8YN	1.4164384	0	6.413581	6.906287	1.3462743	High
TCGA-HZ-A49I	0.8438356	1	5.99632	6.752226	1.1538309	High
TCGA-2J-AAB8	0.2191781	0	5.460966	7.284755	1.2238927	High
TCGA-US-A774	1.9041096	1	4.945982	7.033375	0.990164	Low
TCGA-2J-AABK	1.3260274	0	4.670404	6.508173	0.7704979	Low
TCGA-3A-A9I7	3.6246575	0	4.882796	7.10655	1.0007042	Low
TCGA-IB-AAUU	0.6712329	0	5.241748	7.21341	1.1324358	High
TCGA-IB-7651	1.6520548	1	4.669383	7.044954	0.9304004	Low
TCGA-S4-A8RP	1.9232877	1	5.923653	6.893968	1.1918688	High
TCGA-HZ-A4BH	0.5315068	0	5.49934	7.037329	1.1322444	High
TCGA-HV-AA8X	1.4575342	1	6.664182	7.043255	1.500227	High
TCGA-2J-AAB9	1.7178082	1	4.112415	7.031184	0.8101422	Low
TCGA-FB-AAQ1	0.3369863	1	5.298479	6.954011	1.0478354	High
TCGA-LB-A9Q5	0.8575342	1	4.992997	6.230769	0.7550718	Low
TCGA-2J-AABA	1.6630137	1	6.330543	7.006112	1.3668978	High
TCGA-F2-6880	0.8082192	0	2.94564	5.77974	0.3943335	Low
TCGA-LB-A7SX	1.0767123	1	4.199546	6.903066	0.7907928	Low
TCGA-Z5-AAPL	1.2794521	0	3.610835	6.784612	0.6586512	Low
TCGA-2J-AABT	0.8739726	0	3.975388	6.988004	0.7721364	Low
TCGA-IB-AAUR	0.9260274	0	4.552911	6.913821	0.8639859	Low
TCGA-XD-AAUI	1.0027397	1	4.559322	7.214178	0.9617457	Low

Table S8 (continued)

Table S8 (continued)

ID	futime	fustat	RAB27B	YKT6	RiskScore	Risk
TCGA-IB-AAUQ	0.5013699	1	4.944021	7.414453	1.1316723	High
TCGA-IB-7645	4.1150685	1	6.695121	7.496912	1.7729026	High
TCGA-HZ-A49G	1.8082192	0	4.668161	6.491489	0.7655773	Low
TCGA-XN-A8T3	2.6054795	0	4.411708	7.017908	0.8663686	Low
TCGA-FB-AAQ6	0.6684932	1	4.9436	6.650573	0.8649239	Low
TCGA-IB-7647	1.8246575	1	5.576514	7.585474	1.3986796	High
TCGA-FB-A4P5	0.490411	1	4.644609	6.855319	0.865205	Low
TCGA-HZ-8005	0.3287671	1	4.711267	7.773274	1.2142225	High
TCGA-XD-AAUG	1.1506849	0	4.308301	6.669916	0.7477738	Low
TCGA-IB-7887	0.3013699	1	6.126504	7.327249	1.4572937	High
TCGA-HZ-7923	0.860274	0	5.106751	6.651551	0.8997431	Low
TCGA-HZ-A49H	1.3452055	0	5.423398	6.517526	0.9260198	Low
TCGA-S4-A8RM	2.0191781	0	7.310451	6.993417	1.7212672	High
TCGA-OE-A75W	0.7315068	1	4.357423	7.064328	0.8692423	Low
TCGA-IB-7888	3.6493151	1	5.87381	7.053919	1.2458722	High
TCGA-LB-A8F3	1.0383562	0	4.109818	6.838214	0.7565028	Low
TCGA-IB-AAUW	0.630137	1	6.557728	6.78018	1.3331533	High
TCGA-IB-7644	1.0794521	1	7.065153	6.851409	1.5438574	High
TCGA-Q3-AA2A	0.260274	0	5.115558	6.488333	0.8513354	Low
TCGA-IB-A5ST	1.739726	0	3.593623	7.288727	0.7832083	Low
TCGA-Q3-A5QY	1.139726	0	3.174349	6.611299	0.5581113	Low
TCGA-HV-A5A6	5.5780822	1	4.244214	7.520789	0.9933104	Low
TCGA-IB-7654	1.3041096	1	4.75943	6.375295	0.7511783	Low
TCGA-IB-7652	3.0575342	0	5.798379	7.022626	1.2101442	High
TCGA-3A-A9IZ	0.8438356	1	5.494135	7.154349	1.178353	High
TCGA-IB-A5SS	1.260274	1	6.02152	7.435619	1.4762824	High
TCGA-FB-AAPZ	1.9616438	0	4.608061	7.328193	1.0128715	Low
TCGA-L1-A7W4	0.7616438	1	5.000148	6.921101	0.964264	Low
TCGA-F2-A44H	1.6054795	0	3.565652	6.341665	0.5575456	Low
TCGA-FB-AAQ0	1.2958904	1	5.427651	6.590871	0.951192	Low
TCGA-YB-A89D	0.9589041	0	5.262454	7.046639	1.0732285	High
TCGA-M8-A5N4	1.6	0	5.558242	7.007417	1.1363308	High
TCGA-PZ-A5RE	1.2876712	1	5.741976	7.302889	1.3175868	High
TCGA-2L-AAQJ	1.0794521	1	5.837807	6.766855	1.1165261	High
TCGA-HV-A5A4	0.6356164	0	5.194174	6.486672	0.8670304	Low

Table S8 (continued)

Table S8 (continued)

ID	futime	fustat	RAB27B	YKT6	RiskScore	Risk
TCGA-FB-AAQ2	0.4191781	1	5.443501	7.127732	1.1532829	High
TCGA-F2-7276	0.5917808	1	4.504886	7.0192	0.8863475	Low
TCGA-FB-A78T	1.0273973	1	5.945299	6.757733	1.1420101	High
TCGA-IB-AAUP	1.1808219	0	3.64894	7.066973	0.7341091	Low
TCGA-YY-A8LH	5.5232877	0	5.913722	7.756375	1.6104426	High
GSM5570968	4.2	1	6.067154	6.785044	1.1872243	High
GSM5570973	2.9506849	1	5.947686	7.192174	1.331339	High
GSM5570975	0.3837113	1	6.430696	7.49164	1.6608911	High
GSM5570976	0.1972603	1	5.410384	6.984494	1.0879383	High
GSM5570977	0.6863569	1	4.608798	6.48814	0.7538676	Low
GSM5570979	0.2026644	1	4.508503	7.350892	0.9969049	Low
GSM5570987	0.4242442	1	6.242507	7.323948	1.4966624	High
GSM5570997	0.6863569	1	5.72597	7.13919	1.2390927	High
GSM5570998	1.3150685	1	5.542351	7.027312	1.1399589	High
GSM5571000	0.729592	1	6.20676	7.068971	1.3565875	High
GSM5571004	2.5292522	1	4.448812	6.696126	0.7805627	Low
GSM5571005	0.230137	1	3.894984	6.892246	0.7323039	Low
GSM5571009	0.9534247	1	6.169073	7.200119	1.4078572	High
GSM5571010	0.5671233	1	5.873903	8.587764	2.1370305	High
GSM5571011	1.2376042	1	3.979693	7.025061	0.7830755	Low
GSM5571012	0.8782126	1	5.105512	7.056575	1.0372072	High
GSM5571018	0.140514	1	6.519556	7.03103	1.4428706	High
GSM5571019	3.2876712	0	4.429337	6.708359	0.7802763	Low
GSM5571020	0.5917802	1	4.92114	7.298452	1.0804785	High
GSM5571023	0.1351096	1	5.65308	6.784569	1.0748227	High
GSM5571026	1.0849315	1	4.530181	7.156736	0.9359441	Low
GSM5571031	0.8890214	0	5.646089	7.242002	1.2603506	High
GSM5571044	0.8755104	0	4.404385	7.192775	0.919718	Low
GSM5571047	2.2684932	0	5.682986	6.945747	1.1457101	High
GSM5571052	0.6863569	0	5.477752	7.108905	1.1551188	High
GSM5571061	2.3178082	0	5.100403	6.873612	0.9713639	Low
GSM5571062	0.2323886	1	5.275347	7.454271	1.2425372	High
GSM5571079	1.7917808	0	5.58477	6.949277	1.1204317	High
GSM5571080	1.4943125	0	5.522052	6.683254	1.0051086	Low
GSM5571084	1.4348643	0	3.663051	6.876555	0.6888739	Low

Table S8 (continued)

Table S8 (continued)

ID	futime	fustat	RAB27B	YKT6	RiskScore	Risk
GSM5571096	1.178156	1	4.736816	7.202418	0.9994213	Low
GSM5571098	3.4191781	1	3.066056	6.578766	0.5376165	Low
GSM5571101	0.5260274	1	4.521691	7.232461	0.9592555	Low
GSM5571102	0.0621504	1	5.588994	6.975869	1.1321078	High
GSM5571108	0.8712329	0	6.434975	6.46228	1.1575242	High
GSM5571114	0.8465753	1	4.439439	7.547105	1.0505986	High
GSM5571122	1.060274	1	4.75393	6.79017	0.8680631	Low
GSM5571125	1.2849315	1	3.450228	6.752938	0.6267442	Low
GSM5571127	2.2684932	0	6.382287	6.804139	1.2890483	High
GSM5571130	2.0520548	0	4.148678	6.632522	0.7102868	Low
GSM5571132	0.4027397	1	5.631785	7.259381	1.2637371	High
GSM5571133	0.7808219	1	4.806718	7.200709	1.0157046	Low
GSM5571139	0.7917808	1	4.269715	6.844981	0.7879464	Low
GSM5571140	0.169863	1	2.745652	6.505798	0.4852404	Low
GSM5571151	0.0575342	0	5.271713	7.224826	1.145192	High
GSM5571153	0.5342466	0	4.011027	6.763621	0.7196583	Low
GSM5571157	0.2356164	0	4.63073	6.792878	0.8435958	Low
GSM5571161	0.3726027	0	6.403066	7.622827	1.7278469	High
GSM5571163	0.0657534	0	5.1453	6.929264	1.0012897	Low
GSM5571165	0.2520548	0	6.337798	6.691265	1.2257221	High
GSM5571167	0.0328767	0	3.113103	6.842106	0.5964899	Low
GSM5571174	0.5178082	1	6.281343	6.941076	1.3203118	High
GSM5571176	0.0739726	1	3.758216	7.32526	0.8252773	Low
GSM5571177	0.4849315	1	3.268706	6.639633	0.576602	Low
GSM5571181	0.4356164	1	5.820548	7.737415	1.5643905	High
GSM5571182	1.7671233	1	5.199602	6.98011	1.0327205	High
GSM5571186	2.630137	1	6.470181	6.620502	1.2341512	High
GSM5571189	3.7726027	1	3.734515	6.708359	0.6605212	Low
GSM5571200	0.7643836	1	5.451716	6.723612	1.0024286	Low
GSM5571204	5.8191781	0	3.294266	6.721362	0.5970682	Low
GSM5571207	5.5643836	0	3.773208	6.574891	0.6361014	Low
GSM5571211	0.2630137	1	4.385792	6.516219	0.7217055	Low
GSM1383778	1.1123288	1	5.431578	7.504037	1.3127522	High
GSM1383779	2.9890411	1	4.131995	6.672009	0.7173461	Low
GSM1383780	0.509589	1	7.684353	7.226782	2.0438051	High

Table S8 (continued)

Table S8 (continued)

ID	futime	fustat	RAB27B	YKT6	RiskScore	Risk
GSM1383784	1.030137	1	6.540477	7.313757	1.6017649	High
GSM1383787	2.3287671	1	3.744023	7.184355	0.7827003	Low
GSM1383791	3.1013699	1	5.452534	7.173011	1.1743402	High
GSM1383792	0.7616438	1	4.304537	7.479515	0.9932573	Low
GSM1383793	4.7561644	0	4.367894	7.497797	1.0149695	Low
GSM1383797	0.6438356	1	3.307137	6.738049	0.6024398	Low
GSM1383798	3.1068493	0	4.87622	7.043578	0.9772384	Low
GSM1383800	2.3890411	1	6.931281	6.971257	1.5594611	High
GSM1383801	1.3287671	1	6.432537	6.845457	1.3237764	High
GSM1383803	2.6082192	1	6.205634	7.0997	1.3709609	High
GSM1383806	0.8712329	1	5.332205	7.381237	1.2276465	High
GSM1383807	1.7671233	1	4.783515	7.236959	1.0230313	High
GSM1383809	1.6027397	1	5.65308	6.857599	1.1027922	High
GSM1383811	2.4876712	0	5.490832	6.737105	1.0166899	Low
GSM1383812	2.7506849	0	5.193675	6.700062	0.9345063	Low
GSM1383814	2.3561644	0	7.481897	6.907415	1.7400621	High
GSM1383816	1.6465753	1	5.076586	6.411026	0.8207893	Low
GSM1383817	2.2273973	0	6.880829	6.519109	1.3141502	High
GSM1383819	2.7123288	1	3.774698	6.720928	0.6698719	Low
GSM1383820	1.2849315	1	4.204658	7.071681	0.8401457	Low
GSM1383821	1.3342466	1	3.328279	6.62694	0.5822925	Low
GSM1383822	1.3506849	1	5.431019	6.679697	0.9821753	Low
GSM1383823	0.7260274	1	6.735951	6.921695	1.4623806	High
GSM1383825	1	1	3.476837	6.900354	0.6643278	Low
GSM1383826	1.8	0	5.186934	6.925723	1.0100775	Low
GSM1383827	0.9452055	0	5.492739	7.159769	1.1802066	High
GSM1383831	2.4383562	0	4.364343	7.194497	0.911481	Low
GSM1383835	1.7369863	1	4.708537	6.145422	0.6844234	Low
GSM1383836	1.8657534	0	5.317248	6.76121	0.9835429	Low
GSM1383837	1.1178082	1	4.664508	6.52743	0.774639	Low
GSM1383840	0.309589	1	5.261655	7.135147	1.1069562	High
GSM1527105	4.2	1	6.115467	6.709689	1.16964	High
GSM1527109	0.2219178	1	5.45892	7.41908	1.282482	High
GSM1527137	3.2876712	0	4.067754	6.972203	0.7850539	Low
GSM1527139	0.0986301	1	5.311608	7.412488	1.2351011	High

Table S8 (continued)

Table S8 (continued)

ID	futime	fustat	RAB27B	YKT6	RiskScore	Risk
GSM1527141	1.0849315	1	4.396632	7.259381	0.9397726	Low
GSM1527149	2.2767123	1	5.704832	6.60044	1.0199922	Low
GSM1527163	0.6328767	1	5.266567	7.435096	1.2315885	High
GSM1527169	1.7342466	0	5.80442	6.904367	1.162518	High
GSM1527171	0.7315068	1	5.008929	6.768635	0.9158366	Low
GSM1527175	0.5260274	1	4.717613	7.295142	1.0278135	High
GSM1527177	1.3479452	0	5.487023	6.925228	1.0852545	High
GSM1527183	0.3452055	1	2.588745	7.41908	0.644376	Low
GSM1527185	0.8465753	1	4.895578	7.375679	1.1034485	High
GSM1527191	0.369863	1	2.516809	7.217563	0.590013	Low
GSM1527199	0.0739726	1	3.971532	7.452788	0.9084439	Low
GSM1527200	0.4849315	1	3.503838	6.404797	0.5616782	Low
GSM1527209	2.630137	1	7.157618	6.852665	1.5791696	High
GSM1527215	3.4520548	0	4.055088	6.977436	0.7841151	Low
GSM1527218	1.1260274	1	6.979752	7.285289	1.7619663	High
GSM1527227	5.8191781	0	4.032869	6.550006	0.6710684	Low
GSM1527230	5.5643836	0	3.647232	6.675558	0.6394193	Low