

Figure S1 Age-restricted cubic splines for 5-year (left) and 10-year (right) overall survival. HR, hazard ratio.

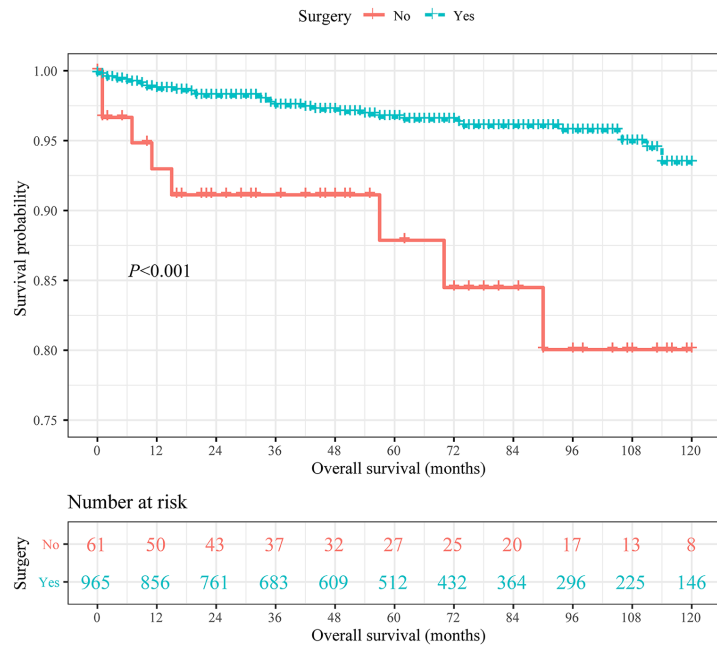


Figure S2 Survival curve of MPE patients with (yes)/without (no) surgery for 10-year overall survival. MPE, myxopapillary ependymoma.

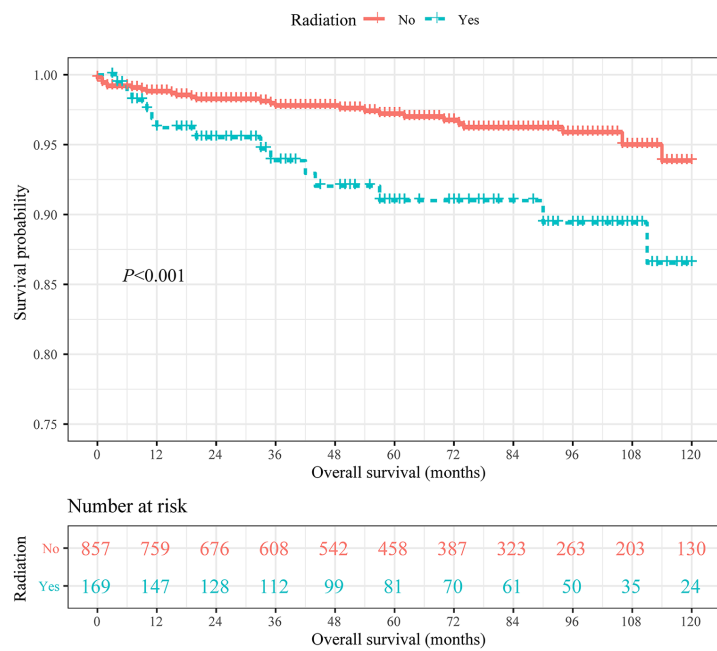


Figure S3 Survival curve of MPE patients with (yes)/without (no) radiotherapy for 10-year overall survival. MPE, myxopapillary ependymoma.