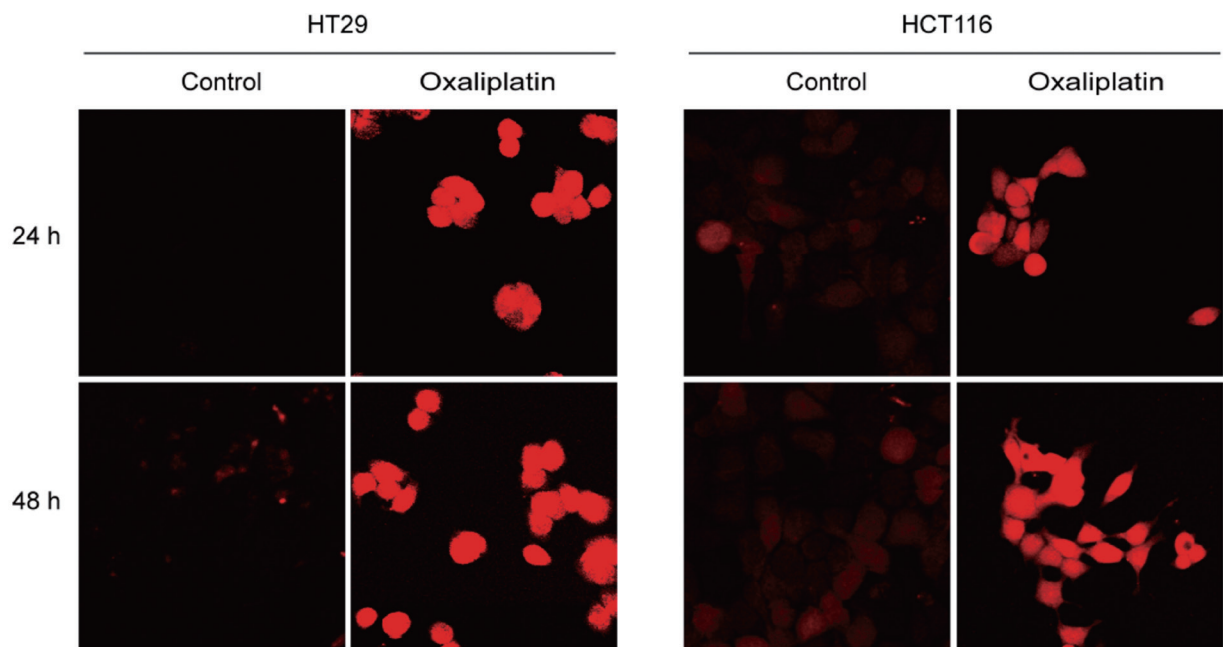


**Figure S1** Correlation analysis of SLC12A8 expression with NAD<sup>+</sup> metabolism-related genes in CRC. SLC12A8, solute carrier family 12 member 8; NAD<sup>+</sup>, nicotinamide adenine dinucleotide; CRC, colorectal cancer; TPM, transcripts per million.



**Figure S2** Oxaliplatin treatment promotes ROS production in CRC cells. ROS production was examined by DCF fluorescence microscopy ( $\times 400$ ). ROS, reactive oxygen species; CRC, colorectal cancer, DCF, dichlorofluorescein.