

Table S1 Patient pre-operative characteristics (excluding patients having TIPS >90 days from surgery)

Characteristics	Total (n=35)	No TIPS (n=18)	TIPS (n=17)	P value
Age (years), median [IQR]	62.0 [54.0, 69.0]	63.0 [54.0, 69.0]	62.0 [59.0, 68.0]	0.87
Male gender, n (%)	24 (68.6)	14 (77.8)	10 (58.8)	0.23
Race, n (%)				0.22
Caucasian	20 (57.1)	8 (44.4)	12 (70.6)	
African American	6 (17.1)	4 (22.2)	2 (11.8)	
Hispanic	8 (22.9)	6 (33.3)	2 (11.8)	
Other	1 (2.9)	0 (0.0)	1 (5.9)	
Caucasian, n (%)				0.12
No	15 (42.9)	10 (55.6)	5 (29.4)	
Yes	20 (57.1)	8 (44.4)	12 (70.6)	
BMI (kg/m ²), median [IQR]	28.8 [24.3, 33.1]	29.8 [26.0, 34.0]	28.1 [23.2, 32.6]	0.38
Etiology of cirrhosis, n (%)				0.81
ETOH	7 (20.0)	4 (22.2)	3 (17.6)	
HCV	13 (37.1)	7 (38.9)	6 (35.3)	
NASH	11 (31.4)	5 (27.8)	6 (35.3)	
AIH	2 (5.7)	1 (5.6)	1 (5.9)	
Budd Chiari	1 (2.9)	0 (0.0)	1 (5.9)	
PBC	1 (2.9)	1 (5.6)	0 (0.0)	
Ascites, n (%)	14 (40.0)	5 (27.8)	9 (52.9)	0.13
Large ascites	9 (64.3)	2 (40.0)	7 (77.8)	0.16
Small ascites	5 (35.7)	3 (60.0)	2 (22.2)	0.16
Esophageal varices, n (%)	15 (42.9)	4 (22.2)	11 (64.7)	0.01
Esophageal variceal bleeding, n (%)	9 (25.7)	4 (22.2)	5 (29.4)	0.63
Previous encephalopathy, n (%)	12 (34.3)	3 (16.7)	9 (52.9)	0.02
Hemoglobin (mg/dL), median [IQR]	11.2 [9.5, 11.9]	11.3 [9.8, 12.1]	11.1 [9.5, 11.8]	0.46
Serum albumin, median [IQR]	3.0 [2.5, 3.4]	3.0 [2.5, 3.5]	2.9 [2.5, 3.1]	0.46
Serum bilirubin, median [IQR]	1.4 [0.8, 1.9]	1.4 [0.8, 1.7]	1.2 [0.9, 2.2]	0.95
INR, median [IQR]	1.4 [1.2, 1.5]	1.3 [1.2, 1.4]	1.4 [1.4, 1.7]	0.03
PT, median [IQR]	16.9 [15.2, 18.1]	16.0 [15.0, 17.5]	17.1 [16.7, 19.1]	0.09
Platelets (×10 ⁹), median [IQR]	91.0 [62.0, 116.0]	101.5 [73.0, 114.0]	73.0 [55.0, 125.0]	0.31
Creatinine, median (IQR)	0.8 (0.7, 1.0)	0.7 (0.7, 1.0)	0.8 (0.7, 1.0)	0.38
Diabetes, n (%)	11 (31.4)	6 (33.3)	5 (29.4)	0.80
Chronic kidney disease, n (%)	4 (11.4)	1 (5.6)	3 (17.6)	0.26
Congestive heart failure, n (%)	3 (8.6)	2 (11.1)	1 (5.9)	0.58
Hypertension, n (%)	8 (22.9)	3 (16.7)	5 (29.4)	0.37
Ejection fraction (%), median [IQR]	60.0 [60.0, 65.0]	60.0 [60.0, 65.0]	60.0 [60.0, 65.0]	0.92
Pulmonary artery pressure (mmHg), median [IQR]	28.0 [21.0, 33.0]	33.0 [21.0, 53.0]	27.5 [22.5, 30.0]	0.36
Pre-operative CTP score, median [IQR]	8.0 [7.0, 9.0]	7.0 [6.0, 8.0]	9.0 [7.0, 10.0]	0.01
Pre-operative MELD, median [IQR]	12.0 [8.0, 15.0]	11.0 [8.0, 13.0]	13.0 [10.0, 16.0]	0.14

Values are as frequency and % for categorical variables and median [IQR] for continuous variables. TIPS, transjugular intrahepatic portosystemic shunt; IQR, interquartile range; BMI, body mass index; ETOH, alcohol consumption; HCV, hepatitis C virus; NASH, nonalcoholic steatohepatitis; AIH, autoimmune hepatitis; PBC, primary biliary cholangitis; INR, international normalized ratio; PT, prothrombin time; CTP, Child-Turcotte-Pugh; MELD, model for end-stage liver disease.

Table S2 Patient pre-operative characteristics (excluding patients having TIPS >30 days from surgery)

Characteristics	Total (n=32)	No TIPS (n=18)	TIPS (n=14)	P value
Age (years), median [IQR]	61.0 [52.5, 69.0]	63.0 [54.0, 69.0]	61.0 [48.0, 70.0]	0.73
Male gender, n (%)	21 (65.6)	14 (77.8)	7 (50.0)	0.10
Race, n (%)				0.20
Caucasian	18 (56.3)	8 (44.4)	10 (71.4)	
African American	5 (15.6)	4 (22.2)	1 (7.1)	
Hispanic	8 (25.0)	6 (33.3)	2 (14.3)	
Other	1 (3.1)	0 (0.0)	1 (7.1)	
Caucasian, n (%)				0.13
No	14 (43.8)	10 (55.6)	4 (28.6)	
Yes	18 (56.3)	8 (44.4)	10 (71.4)	
BMI (kg/m ²), median [IQR]	28.9 [24.8, 33.3]	29.8 [26.0, 34.0]	28.0 [23.2, 33.0]	0.48
Etiology of cirrhosis				0.78
ETOH	7 (21.9)	4 (22.2)	3 (21.4)	
HCV	11 (34.4)	7 (38.9)	4 (28.6)	
NASH	10 (31.3)	5 (27.8)	5 (35.7)	
AIH	2 (6.3)	1 (5.6)	1 (7.1)	
Budd Chiari	1 (3.1)	0 (0.0)	1 (7.1)	
PBC	1 (3.1)	1 (5.6)	0 (0.0)	
Ascites, n (%)	13 (40.6)	5 (27.8)	8 (57.1)	0.09
Large ascites	8 (61.5)	2 (40.0)	6 (75.0)	0.21
Small ascites	5 (38.5)	3 (60.0)	2 (25.0)	0.21
Esophageal varices, n (%)	14 (43.8)	4 (22.2)	10 (71.4)	0.01
Esophageal variceal bleeding, n (%)	8 (25.0)	4 (22.2)	4 (28.6)	0.68
Previous encephalopathy, n (%)	10 (31.3)	3 (16.7)	7 (50.0)	0.04
Hemoglobin (mg/dL), median [IQR]	11.2 [9.5, 11.9]	11.3 [9.8, 12.1]	11.1 [9.1, 11.9]	0.49
Serum albumin, median [IQR]	3.0 [2.5, 3.3]	3.0 [2.5, 3.5]	2.9 [2.5, 3.1]	0.48
Serum bilirubin, median [IQR]	1.4 [0.9, 2.0]	1.4 [0.8, 1.7]	1.5 [0.9, 2.3]	0.58
INR, median [IQR]	1.4 [1.2, 1.6]	1.3 [1.2, 1.4]	1.4 [1.4, 1.7]	0.01
PT, median [IQR]	16.9 [15.2, 18.4]	16.0 [15.0, 17.5]	17.6 [16.8, 19.9]	0.06
Platelets (×10 ⁹), median [IQR]	92.5 [63.0, 120.5]	101.5 [73.0, 114.0]	77.0 [55.0, 131.0]	0.49
Creatinine, median [IQR]	0.8 [0.7, 1.0]	0.7 [0.7, 1.0]	0.8 [0.7, 1.0]	0.70
Diabetes, n (%)	9 (28.1)	6 (33.3)	3 (21.4)	0.46
Chronic kidney disease, n (%)	2 (6.3)	1 (5.6)	1 (7.1)	0.85
Congestive heart failure, n (%)	3 (9.4)	2 (11.1)	1 (7.1)	0.70
Hypertension, n (%)	8 (25.0)	3 (16.7)	5 (35.7)	0.22
Ejection fraction (%), median [IQR]	60.0 [60.0, 65.0]	60.0 [60.0, 65.0]	62.5 [60.0, 65.0]	0.71
Pulmonary artery pressure (mmHg), median [IQR]	28.0 [21.0, 33.0]	33.0 [21.0, 53.0]	26.0 [21.0, 30.0]	0.36
Pre-operative CTP score, median [IQR]	8.0 [7.0, 9.0]	7.0 [6.0, 8.0]	9.0 [8.0, 10.0]	0.001
Pre-operative MELD, median [IQR]	12.0 [8.0, 15.0]	11.0 [8.0, 13.0]	13.0 [10.0, 17.0]	0.14

Values are as frequency and % for categorical variables and median [IQR] for continuous variables. TIPS, transjugular intrahepatic portosystemic shunt; IQR, interquartile range; BMI, body mass index; ETOH, alcohol consumption; HCV, hepatitis C virus; NASH, nonalcoholic steatohepatitis; AIH, autoimmune hepatitis; PBC, primary biliary cholangitis; INR, international normalized ratio; PT, prothrombin time; CTP, Child-Turcotte-Pugh; MELD, model for end-stage liver disease.

Table S3 Indications and type of surgery (excluding patients having TIPS >90 days from surgery)

Indication and type of surgery	Total (n=35)	No TIPS (n=18)	TIPS (n=17)	P value
Indication for surgery, n (%)				
Acute cholecystitis	10 (28.6)	10 (55.6)	0 (0.0)	<0.001
Colon cancer	12 (34.3)	4 (22.2)	8 (47.1)	0.16
Strangulated hernia	9 (25.7)	1 (5.6)	8 (47.1)	0.01
Gallstone pancreatitis	1 (2.9)	0 (0.0)	1 (5.9)	0.49
Gallbladder polyp	1 (2.9)	1 (5.6)	0 (0.0)	1.00
Pancreas cancer	1 (2.9)	1 (5.6)	0 (0.0)	1.00
Cholangiocarcinoma	1 (2.9)	1 (5.6)	0 (0.0)	1.00
Type of surgery, n (%)				
Cholecystectomy	12 (34.3)	11 (61.1)	1 (5.9)	<0.001
Right hemicolectomy	11 (31.4)	4 (22.2)	7 (41.2)	0.29
Umbilical/incisional hernia repair	8 (22.9)	0 (0.0)	8 (47.1)	0.001
Inguinal hernia repair	1 (2.9)	1 (5.6)	0 (0.0)	1.00
Whipple	1 (2.9)	1 (5.6)	0 (0.0)	1.00
Bile duct excision, hepaticojejunostomy	1 (2.9)	1 (5.6)	0 (0.0)	1.00
Sigmoid colectomy	1 (2.9)	0 (0.0)	1 (5.9)	0.49

Values are as frequency and % for categorical variables. TIPS, transjugular intrahepatic portosystemic shunt.

Table S4 Indications and type of surgery (excluding patients having TIPS >30 days from surgery)

Indication and type of surgery	Total (n=32)	No TIPS (n=18)	TIPS (n=14)	P value
Indication for surgery, n (%)				
Acute cholecystitis	10 (31.3)	10 (55.6)	0 (0.0)	0.001
Colon cancer	10 (31.3)	4 (22.2)	6 (42.9)	0.27
Strangulated hernia	8 (25.0)	1 (5.6)	7 (50.0)	0.01
Gallstone pancreatitis	1 (3.1)	0 (0.0)	1 (7.1)	0.44
Gallbladder polyp	1 (3.1)	1 (5.6)	0 (0.0)	1.00
Pancreas cancer	1 (3.1)	1 (5.6)	0 (0.0)	1.00
Cholangiocarcinoma	1 (3.1)	1 (5.6)	0 (0.0)	1.00
Type of surgery, n (%)				
Cholecystectomy	12 (37.5)	11 (61.1)	1 (7.1)	0.003
Right hemicolectomy	9 (28.1)	4 (22.2)	5 (35.7)	0.45
Umbilical/incisional hernia repair	7 (21.9)	0 (0.0)	7 (50.0)	0.001
Inguinal hernia repair	1 (3.1)	1 (5.6)	0 (0.0)	1.00
Whipple	1 (3.1)	1 (5.6)	0 (0.0)	1.00
Bile duct excision, hepaticojejunostomy	1 (3.1)	1 (5.6)	0 (0.0)	1.00
Sigmoid colectomy	1 (3.1)	0 (0.0)	1 (7.1)	0.44

Values are as frequency and % for categorical variables. TIPS, transjugular intrahepatic portosystemic shunt.

Table S5 Intra- and post-operative parameters/complications/outcomes (excluding patients having TIPS >90 days from surgery)

Parameters/complications/outcomes	Total (n=35)	No TIPS (n=18)	TIPS (n=17)	P value
Operative MELD, median [IQR]	14.0 [10.0, 16.0]	11.0 [10.0, 15.0]	16.0 [12.0, 17.0]	0.01
Operative CTP, median [IQR]	8.0 [7.0, 10.0]	7.0 [6.0, 8.0]	9.0 [8.0, 11.0]	<0.001
Operative time (min), median [IQR]	193.0 [141.0, 245.0]	196.5 [164.0, 260.0]	150.0 [115.0, 210.0]	0.02
Laparoscopic or open, n (%)				0.03
Laparoscopic	11 (31.4)	9 (50.0)	2 (11.8)	
Open	24 (68.6)	9 (50.0)	15 (88.2)	
Operative blood loss (mL), median [IQR]	100.0 [50.0, 400.0]	125.0 [50.0, 350.0]	100.0 [30.0, 400.0]	0.92
PRBC transfusion, n (%)	12 (34.3)	4 (22.2)	8 (47.1)	0.16
Intra- or post-operative blood transfusion, n (%)	14 (40.0)	4 (22.2)	10 (58.8)	0.04
Post-operative wound leak, n (%)	4 (11.4)	2 (11.1)	2 (11.8)	1.00
Post-operative wound infection, n (%)	3 (8.6)	0 (0.0)	3 (17.6)	0.10
Post-operative encephalopathy, n (%)	9 (25.7)	4 (22.2)	5 (29.4)	0.71
Post-operative complications, n (%)	11 (31.4)	5 (27.8)	6 (35.3)	0.72
Post-operative intra-abdominal abscess, n (%)	3 (8.6)	0 (0.0)	3 (17.6)	0.10
Anastomotic leak, n (%)	1 (2.9)	0 (0.0)	1 (5.9)	0.49
Post-operative systemic infection (sepsis, UTI, PNA), n (%)	5 (14.3)	2 (11.1)	3 (17.6)	0.66
Post-operative liver decompensation, n (%)	2 (5.7)	0 (0.0)	2 (11.8)	0.23
Post-operative ileus, n (%)	4 (11.4)	2 (11.1)	2 (11.8)	1.00
Post-operative required TIPS revision, n (%)	1 (2.9)	0 (0.0)	1 (5.9)	0.49
Post-operative ARDS, n (%)	1 (2.9)	1 (5.6)	0 (0.0)	1.00
Post-operative strangulated incisional hernia, n (%)	1 (2.9)	1 (5.6)	0 (0.0)	1.00
Length of stay (days), median [IQR]	8.0 [5.0, 22.0]	8.0 [5.0, 14.0]	8.0 [6.0, 27.0]	0.21
Death, n (%)	6 (17.1)	2 (11.1)	4 (23.5)	0.40
Cause of death, n (%)				0.59
Multiorgan failure, sepsis	4 (11.4)	1 (5.6)	3 (17.6)	
Progression of tumor	2 (5.7)	1 (5.6)	1 (5.9)	
Bleeding	1 (2.9)	0 (0.0)	1 (5.9)	
Not applicable	28 (80.0)	16 (88.9)	12 (70.6)	
One month survival, n (%)	30 (85.7)	17 (94.4)	13 (76.5)	0.18
One year survival, n (%)	29 (82.9)	16 (88.9)	13 (76.5)	0.40

Values are as frequency and % for categorical variables and median [IQR] for continuous variables. TIPS, transjugular intrahepatic portosystemic shunt; MELD, model for end-stage liver disease; CTP, Child-Turcotte-Pugh; IQR, interquartile range; UTI, urinary tract infection; PNA, pneumonia; ARDS, acute respiratory distress syndrome.

Table S6 Intra- and post-operative parameters/complications/outcomes (excluding patients having TIPS >30 days from surgery)

Parameters/complications/outcomes	Total (n=32)	No TIPS (n=18)	TIPS (n=14)	P value
Operative MELD, median [IQR]	13.5 [10.0, 16.0]	11.0 [10.0, 15.0]	15.0 [11.0, 17.0]	0.03
Operative CTP, median [IQR]	8.0 [7.0, 9.5]	7.0 [6.0, 8.0]	9.5 [9.0, 11.0]	<0.001
Operative time (min), median [IQR]	186.5 [142.0, 245.5]	196.5 [164.0, 260.0]	146.5 [115.0, 194.0]	0.01
Laparoscopic or open, n (%)				0.002
Laparoscopic	9 (28.1)	9 (50.0)	0 (0.0)	
Open	23 (71.9)	9 (50.0)	14 (100.0)	
Operative blood loss (mL), median [IQR]	100.0 [40.0, 325.0]	125.0 [50.0, 350.0]	100.0 [25.0, 300.0]	0.79
PRBC transfusion, n (%)	10 (31.3)	4 (22.2)	6 (42.9)	0.27
Intra- or post-operative blood transfusion, n (%)	12 (37.5)	4 (22.2)	8 (57.1)	0.07
Post-operative wound leak, n (%)	4 (12.5)	2 (11.1)	2 (14.3)	1.00
Post-operative wound infection, n (%)	2 (6.3)	0 (0.0)	2 (14.3)	0.18
Post-operative encephalopathy, n (%)	8 (25.0)	4 (22.2)	4 (28.6)	0.70
Post-operative complications, n (%)	9 (28.1)	5 (27.8)	4 (28.6)	1.00
Post-operative intra-abdominal abscess, n (%)	1 (3.1)	0 (0.0)	1 (7.1)	0.44
Anastomotic leak, n (%)	1 (3.1)	0 (0.0)	1 (7.1)	0.44
Post-operative systemic infection (sepsis, UTI, PNA), n (%)	5 (15.6)	2 (11.1)	3 (21.4)	0.63
Post-operative liver decompensation, n (%)	2 (6.3)	0 (0.0)	2 (14.3)	0.18
Post-operative ileus, n (%)	4 (12.5)	2 (11.1)	2 (14.3)	1.00
Post-operative required TIPS revision, n (%)	1 (3.1)	0 (0.0)	1 (7.1)	0.44
Post-operative ARDS, n (%)	1 (3.1)	1 (5.6)	0 (0.0)	1.00
Post-operative strangulated incisional hernia, n (%)	1 (3.1)	1 (5.6)	0 (0.0)	1.00
Length of stay (days), median [IQR]	8.0 [5.0, 22.5]	8.0 [5.0, 14.0]	10.0 [5.0, 35.0]	0.21
Death, n (%)	6 (18.8)	2 (11.1)	4 (28.6)	0.36
Cause of death, n (%)				0.26
Multiorgan failure, sepsis	4 (12.5)	1 (5.6)	3 (21.4)	
Progression of tumor	2 (6.3)	1 (5.6)	1 (7.1)	
Bleeding	1 (3.1)	0 (0.0)	1 (7.1)	
Not applicable	25 (78.1)	16 (88.9)	9 (64.3)	
One month survival, n (%)	27 (84.4)	17 (94.4)	10 (71.4)	0.14
One year survival, n (%)	26 (81.3)	16 (88.9)	10 (71.4)	0.36

Values are as frequency and % for categorical variables and median [IQR] for continuous variables. TIPS, transjugular intrahepatic portosystemic shunt; MELD, model for end-stage liver disease; CTP, Child-Turcotte-Pugh; IQR, interquartile range; UTI, urinary tract infection; PNA, pneumonia; ARDS, acute respiratory distress syndrome.

Table S7 Factors associated with post-operative mortality (excluding patients having TIPS >90 days from surgery)

Factors	Alive (n=29)	Dead (n=6)	P value
TIPS, n (%)			0.40
No	16 (55.2)	2 (33.3)	
Yes	13 (44.8)	4 (66.7)	
Age (years), median [IQR]	61.0 [51.0, 67.0]	73.0 [66.0, 78.0]	0.01
Male gender, n (%)	19 (65.5)	5 (83.3)	0.39
Race, n (%)			0.89
Caucasian	17 (58.6)	3 (50.0)	
African American	5 (17.2)	1 (16.7)	
Hispanic	6 (20.7)	2 (33.3)	
Other	1 (3.4)	0 (0.0)	
Caucasian, n (%)			0.70
No	12 (41.4)	3 (50.0)	
Yes	17 (58.6)	3 (50.0)	
BMI (kg/m ²), median [IQR]	28.1 [25.3, 33.1]	30.9 [24.3, 32.6]	0.74
Etiology of cirrhosis, n (%)			0.69
ETOH	5 (17.2)	2 (33.3)	
HCV	12 (41.4)	1 (16.7)	
NASH	8 (27.6)	3 (50.0)	
AIH	2 (6.9)	0 (0.0)	
Budd Chiari	1 (3.4)	0 (0.0)	
PBC	1 (3.4)	0 (0.0)	
Ascites, n (%)	12 (41.4)	2 (33.3)	0.71
Large ascites	9 (75.0)	0 (0.0)	0.04
Small ascites	3 (25.0)	2 (100.0)	0.04
Esophageal varices, n (%)	11 (37.9)	4 (66.7)	0.20
Esophageal variceal bleeding, n (%)	8 (27.6)	1 (16.7)	0.58
Previous encephalopathy, n (%)	10 (34.5)	2 (33.3)	0.96
Hemoglobin (mg/dL), median [IQR]	11.2 [10.0, 11.9]	10.2 [8.6, 11.8]	0.42
Serum albumin, median [IQR]	3.0 [2.6, 3.4]	2.4 [2.2, 2.5]	0.03
Serum bilirubin, median [IQR]	1.2 [0.8, 1.7]	2.3 [1.5, 2.6]	0.10
INR, median [IQR]	1.4 [1.2, 1.4]	1.6 [1.5, 1.8]	0.01
PT, median [IQR]	16.8 [15.2, 17.3]	19.0 [17.7, 20.1]	0.02
Platelets (×10 ⁹), median [IQR]	84.0 [59.0, 111.0]	119.5 [109.0, 142.0]	0.049
Creatinine, median [IQR]	0.8 [0.7, 1.0]	0.8 [0.7, 0.8]	1.00
Diabetes, n (%)	8 (27.6)	3 (50.0)	0.28
Chronic kidney disease, n (%)	4 (13.8)	0 (0.0)	0.33

Table S7 (continued)

Table S7 (continued)

Factors	Alive (n=29)	Dead (n=6)	P value
Congestive heart failure, n (%)	2 (6.9)	1 (16.7)	0.44
Hypertension, n (%)	5 (17.2)	3 (50.0)	0.08
Ejection fraction (%), median [IQR]	60.0 [60.0, 65.0]	60.0 [60.0, 65.0]	0.97
Pulmonary artery pressure (mmHg), median [IQR]	28.0 [24.0, 30.0]	25.0 [15.0, 35.0]	0.81
Pre-operative CTP score, median [IQR]	7.0 [7.0, 9.0]	8.0 [7.0, 10.0]	0.53
Pre-operative MELD, median [IQR]	12.0 [8.0, 14.0]	12.0 [11.0, 16.0]	0.44
Operative MELD, median [IQR]	14.0 [10.0, 16.0]	14.5 [11.0, 17.0]	0.42
Operative CTP, median [IQR]	8.0 [7.0, 9.0]	9.0 [8.0, 11.0]	0.42
Operative time (min), median [IQR]	194.0 [141.0, 234.0]	180.0 [143.0, 276.0]	0.97
Laparoscopic or open, n (%)			0.39
Laparoscopic	10 (34.5)	1 (16.7)	
Open	19 (65.5)	5 (83.3)	
Operative blood loss (mL), median [IQR]	100.0 [50.0, 350.0]	175.0 [50.0, 600.0]	0.50
PRBC transfusion, n (%)	9 (31.0)	3 (50.0)	0.37
Intra- or post-operative blood transfusion, n (%)	10 (34.5)	4 (66.7)	0.19

Values are as frequency and % for categorical variables and median [IQR] for continuous variables. TIPS, transjugular intrahepatic portosystemic shunt; IQR, interquartile range; BMI, body mass index; ETOH, alcohol consumption; HCV, hepatitis C virus; NASH, nonalcoholic steatohepatitis; AIH, autoimmune hepatitis; PBC, primary biliary cholangitis; INR, international normalized ratio; PT, prothrombin time; CTP, Child-Turcotte-Pugh; MELD, model for end-stage liver disease; PRBC, packed red blood cell.

Table S8 Factors associated with post-operative mortality (excluding patients having TIPS >30 days from surgery)

Factors	Alive (n=26)	Dead (n=6)	P value
TIPS, n (%)			0.36
No	16 (61.5)	2 (33.3)	
Yes	10 (38.5)	4 (66.7)	
Age (years), median [IQR]	60.5 [48.0, 67.0]	73.0 [66.0, 78.0]	0.01
Male gender, n (%)	16 (61.5)	5 (83.3)	0.31
Race, n (%)			0.92
Caucasian	15 (57.7)	3 (50.0)	
African American	4 (15.4)	1 (16.7)	
Hispanic	6 (23.1)	2 (33.3)	
Other	1 (3.8)	0 (0.0)	
Caucasian, n (%)			0.73
No	11 (42.3)	3 (50.0)	
Yes	15 (57.7)	3 (50.0)	
BMI (kg/m ²), median [IQR]	28.0 [25.3, 33.6]	30.9 [24.3, 32.6]	0.87
Etiology of cirrhosis, n (%)			0.72

Table S8 (continued)

Table S8 (continued)

Factors	Alive (n=26)	Dead (n=6)	P value
ETOH	5 (19.2)	2 (33.3)	
HCV	10 (38.5)	1 (16.7)	
NASH	7 (26.9)	3 (50.0)	
AIH	2 (7.7)	0 (0.0)	
Budd Chiari	1 (3.8)	0 (0.0)	
PBC	1 (3.8)	0 (0.0)	
Ascites, n (%)	11 (42.3)	2 (33.3)	0.69
Large ascites	8 (72.7)	0 (0.0)	0.052
Small ascites	3 (27.3)	2 (100.0)	0.052
Esophageal varices, n (%)	10 (38.5)	4 (66.7)	0.21
Esophageal variceal bleeding, n (%)	7 (26.9)	1 (16.7)	0.60
Previous encephalopathy, n (%)	8 (30.8)	2 (33.3)	0.90
Hemoglobin (mg/dL), median [IQR]	11.2 [9.8, 11.9]	10.2 [8.6, 11.8]	0.40
Serum albumin, median [IQR]	3.0 [2.6, 3.4]	2.4 [2.2, 2.5]	0.03
Serum bilirubin, median [IQR]	1.4 [0.8, 1.7]	2.3 [1.5, 2.6]	0.13
INR, median [IQR]	1.4 [1.2, 1.4]	1.6 [1.5, 1.8]	0.02
PT, median [IQR]	16.8 [15.0, 17.5]	19.0 [17.7, 20.1]	0.02
Platelets ($\times 10^9$), median [IQR]	84.5 [59.0, 112.0]	119.5 [109.0, 142.0]	0.07
Creatinine, median [IQR]	0.7 [0.7, 1.0]	0.8 [0.7, 0.8]	0.77
Diabetes, n (%)	6 (23.1)	3 (50.0)	0.19
Chronic kidney disease, n (%)	2 (7.7)	0 (0.0)	0.48
Congestive heart failure, n (%)	2 (7.7)	1 (16.7)	0.50
Hypertension, n (%)	5 (19.2)	3 (50.0)	0.12
Ejection fraction (%), median [IQR]	60.0 [60.0, 65.0]	60.0 [60.0, 65.0]	0.85
Pulmonary artery pressure (mmHg), median [IQR]	28.0 [21.0, 33.0]	25.0 [15.0, 35.0]	0.77
Pre-operative CTP score, median [IQR]	8.0 [7.0, 9.0]	8.0 [7.0, 10.0]	0.70
Pre-operative MELD, median [IQR]	12.0 [8.0, 15.0]	12.0 [11.0, 16.0]	0.44
Operative MELD, median [IQR]	12.5 [10.0, 16.0]	14.5 [11.0, 17.0]	0.30
Operative CTP, median [IQR]	8.0 [7.0, 9.0]	9.0 [8.0, 11.0]	0.45
Operative time (min), median [IQR]	193.5 [141.0, 245.0]	180.0 [143.0, 276.0]	0.96
Laparoscopic or open, n (%)			0.49
Laparoscopic	8 (30.8)	1 (16.7)	
Open	18 (69.2)	5 (83.3)	
Operative blood loss (mL), median [IQR]	100.0 [25.0, 300.0]	175.0 [50.0, 600.0]	0.38
PRBC transfusion, n (%)	7 (26.9)	3 (50.0)	0.27
Intra- or post-operative blood transfusion, n (%)	8 (30.8)	4 (66.7)	0.17

Values are as frequency and % for categorical variables and median [IQR] for continuous variables. TIPS, transjugular intrahepatic portosystemic shunt; IQR, interquartile range; BMI, body mass index; ETOH, alcohol consumption; HCV, hepatitis C virus; NASH, nonalcoholic steatohepatitis; AIH, autoimmune hepatitis; PBC, primary biliary cholangitis; INR, international normalized ratio; PT, prothrombin time; CTP, Child-Turcotte-Pugh; MELD, model for end-stage liver disease; PRBC, packed red blood cell.

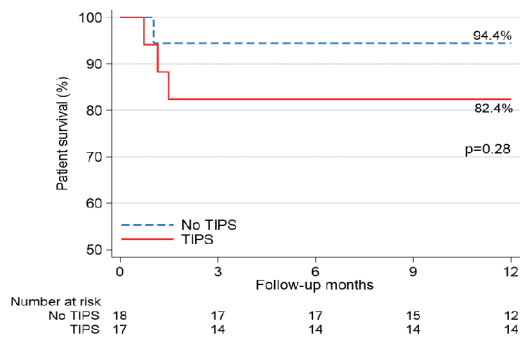


Figure S1 KM survival curves, 12M (excluding patients having TIPS >90 days from surgery). TIPS, transjugular intrahepatic portosystemic shunt; KM, Kaplan-Meier; M, months.

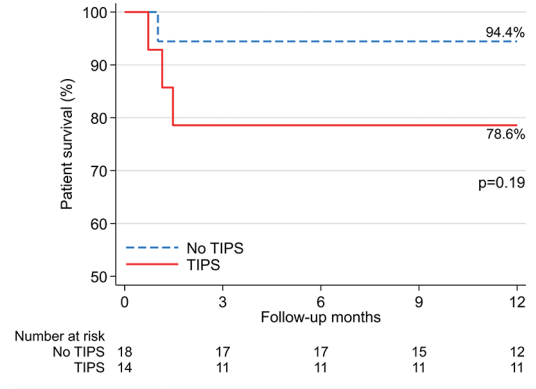


Figure S3 KM survival curves, 12M (excluding patients having TIPS >30 days from surgery). TIPS, transjugular intrahepatic portosystemic shunt; KM, Kaplan-Meier; M, months.

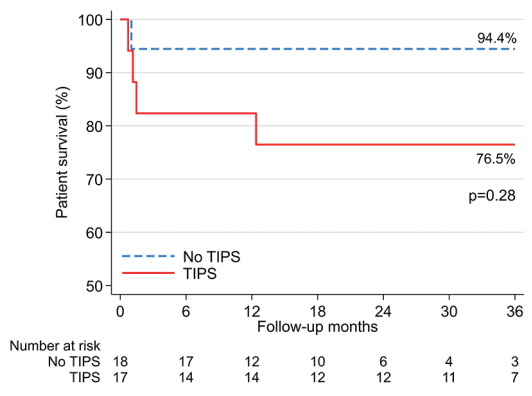


Figure S2 KM survival curves, 36M (excluding patients having TIPS >90 days from surgery). TIPS, transjugular intrahepatic portosystemic shunt; KM, Kaplan-Meier; M, months.

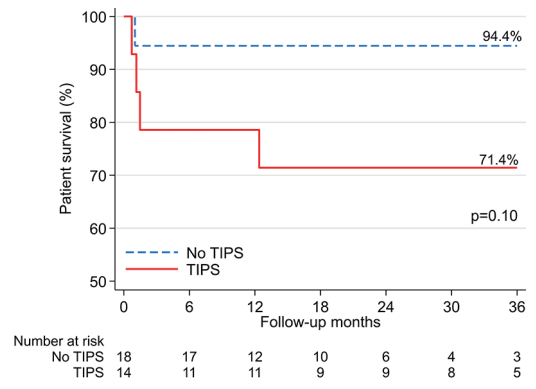


Figure S4 KM survival curves, 36M (excluding patients having TIPS >30 days from surgery). TIPS, transjugular intrahepatic portosystemic shunt; KM, Kaplan-Meier; M, months.