

Table S1 Univariate analysis of factors associated with the presence of liver cirrhosis (n=278)

Variables	Non-LC (n=211)	LC (n=67)	P value
Age (years)	67.00 (22.00, 89.00)	72.00 (52.00, 90.00)	<0.001
Sex (male)	110 (52.1)	35 (52.2)	>0.99
Etiology (HBV/HCV/NBNC)	47/93/71	8/31/28	0.15
BMI (kg/m ²)	22.68 (15.82, 34.29)	22.46 (15.11, 48.04)	>0.99
Serum zinc level (µg/dL)	74.00 (43.00, 109.00)	66.00 (31.00, 151.00)	<0.001
Serum albumin (g/dL)	4.30 (3.10, 5.30)	3.90 (2.60, 4.70)	<0.001
L3 SMI (cm ² /m ²)	41.02 (23.23, 63.90)	40.17 (24.35, 84.28)	0.31
Fib-4 index	1.77 (0.14, 10.92)	2.66 (1.28, 9.54)	<0.001
ALBI score	-2.93 (-3.09, -2.73)	-2.61 (-2.98, -2.35)	<0.001
HCC	19 (9.0)	37 (55.2)	<0.001
Presarcopenia (JSH)	95 (45.0)	35 (52.2)	0.32

Data are expressed as median (IQR), n (%), or n. LC, liver cirrhosis; HBV, hepatitis B virus; HCV, hepatitis C virus; NBNC, negative hepatitis B surface antigen and negative anti-hepatitis C virus antibody; BMI, body mass index; L3, third lumbar vertebra; SMI, skeletal muscle index; Fib-4, fibrosis-4; ALBI, albumin-bilirubin; HCC, hepatocellular carcinoma; JSH, Japan Society of Hepatology; IQR, interquartile range.

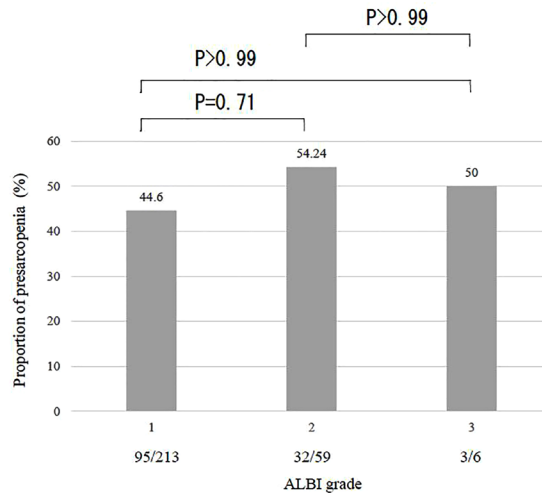


Figure S1 Proportions of presarcopenia by ALBI grade. The proportion of presarcopenia was 44.60% (95/213) in the ALBI grade 1, 54.24% (32/59) in the ALBI grade 2, and 50.00% (3/6) in the ALBI grade 3. ALBI, albumin-bilirubin.

Table S2 Comparison of age cutoff value of 65 years (n=278)

Variables	<65 years (n=106)	≥65 years (n=172)	P value
Age (years)	53.00 (45.00, 59.00)	74.00 (69.00, 79.00)	<0.001
Sex (male)	62 (58.5)	83 (48.3)	0.10
Etiology (HBV/HCV/NBNC)	33/27/46	22/97/53	<0.001
BMI (kg/m ²)	23.25 (20.46, 25.98)	22.33 (20.27, 25.08)	0.06
Serum zinc level (μg/dL)	75.00 (66.00, 81.00)	72.00 (63.00, 80.25)	0.18
Serum albumin (g/dL)	4.30 (3.98, 4.43)	4.20 (3.80, 4.40)	0.07
L3 SMI (cm ² /m ²)	43.67 (37.55, 50.77)	38.87 (32.82, 45.03)	<0.001
Fib-4 index	1.20 (0.87, 1.81)	2.50 (1.90, 3.23)	<0.001
ALBI score	-2.96 (-3.09, -2.70)	-2.87 (-3.04, -2.58)	0.04
Liver cirrhosis	15 (14.2)	52 (30.2)	0.002
HCC	8 (7.5)	48 (27.9)	<0.001
Presarcopenia (JSH)	37 (34.9)	93 (54.1)	0.002

Data are expressed as median (IQR), n (%), or n. HBV, hepatitis B virus; HCV, hepatitis C virus; NBNC, negative hepatitis B surface antigen and negative anti-hepatitis C virus antibody; BMI, body mass index; L3, third lumbar vertebra; SMI, skeletal muscle index; Fib-4, fibrosis-4; ALBI, albumin-bilirubin; HCC, hepatocellular carcinoma; BCAA, branched-chain amino acid; JSH, Japan Society of Hepatology; IQR, interquartile range.