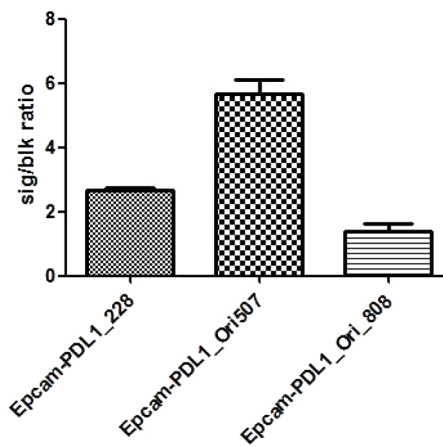


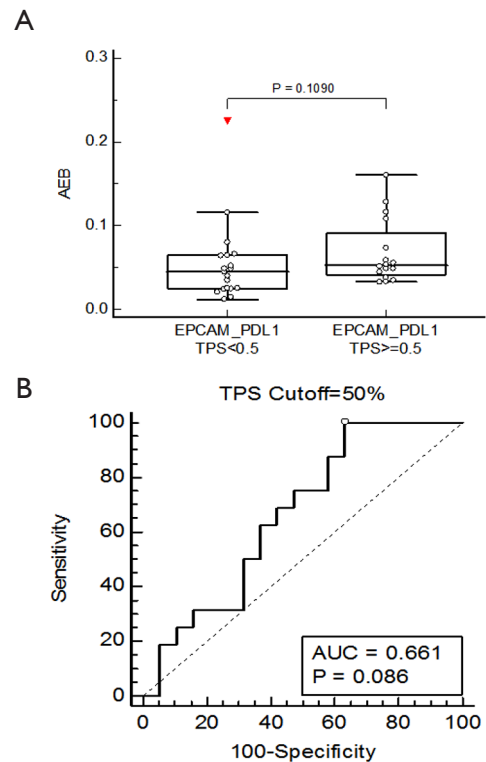
**Table S1** Tested PD-L1 antibody

Name	Company	Catalogue number	Source
PD-L1-1	Abcam	ab205921	Monoclonal Rabbit IgG Clone # 28-8
PD-L1-2	Origene	TA507087	Monoclonal Mouse IgG1 Clone #OTI2C7
PD-L1-3	Origene	TA808771	Monoclonal Mouse IgG1 Clone #OTI2C7

Three monoclonal antibodies of PD-L1 were purchased from Abcam and Origene. Their performance in T-EV detection was further evaluated together with anti-Epcam antibody (MAB9601, R&D Systems).



**Figure S1** Performance of the three antibody pairs in detection of purified exosomes. Exosomes were purified from supernatants of HCT-116 cell culture and were used to evaluate the best Epcam-PD-L1 antibody pair on the Simoa platform. sig/blk ratio: signal vs background ratio.



**Figure S2** Comparison of Simoa Epcam-PD-L1 signals (AEB) in plasma samples from 35 patients with lung cancer and a high or low TPS. (A) At the 50% cutoff value, TPS-high patients had higher but not significant value than TPS-low patients (P=0.109). (B) The best AUC was obtained at 0.661, with a sensitivity of 100% and a specificity of 36.84%.