

Figure S1 cGAS-STING pathway expression in normal tissue compared to cancer tissue in cancer patients: (A) *STING*; (B) *cGAS*; (C) *IFI16*. Gene expression analysis was measured with ddPCR and normalized to ACTB. ddPCR, droplet digital polymerase chain reaction; ACTB, actin beta.

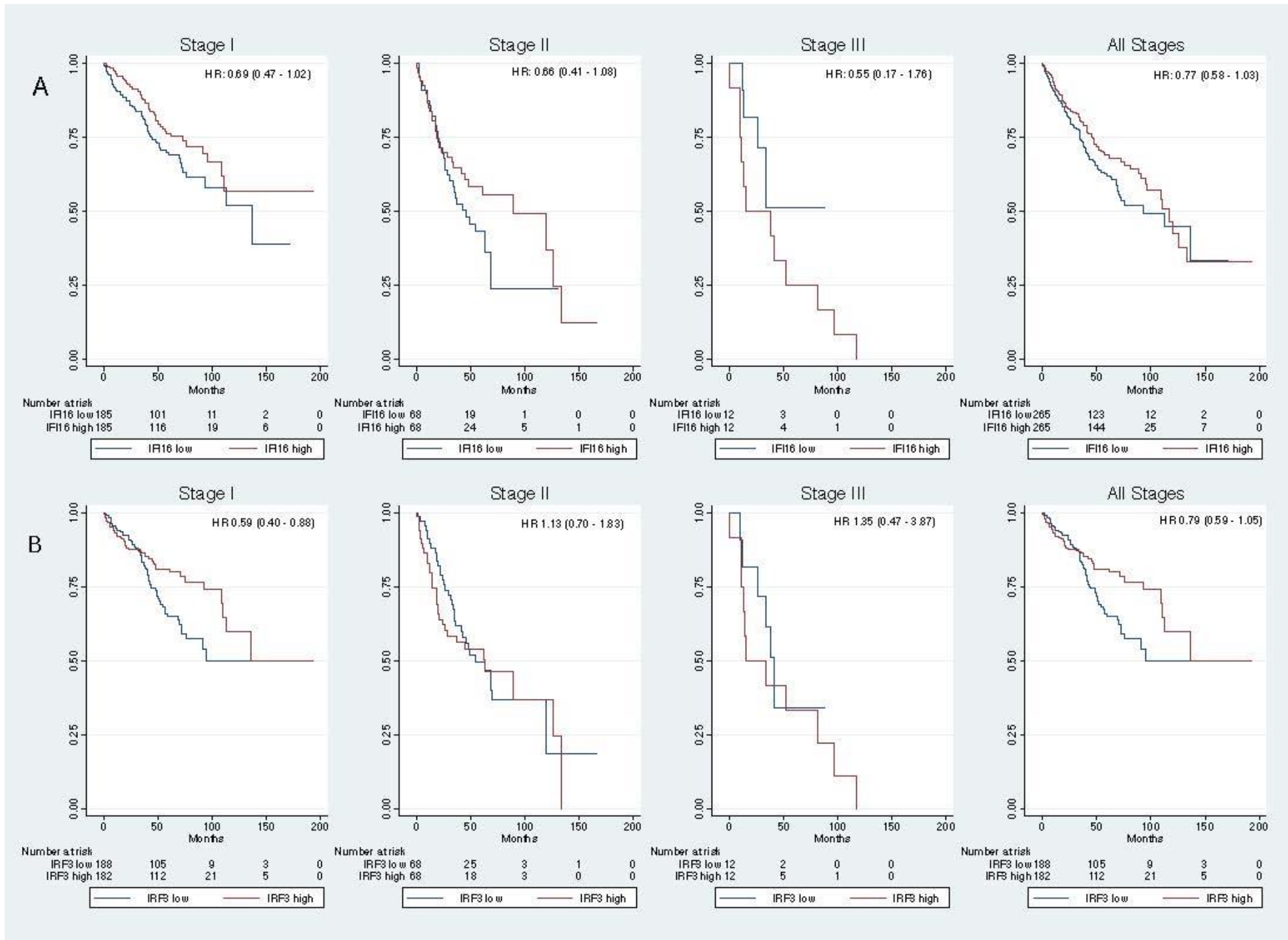


Figure S2 Kaplan-Meier survival analysis for stage I–III lung adenocarcinoma patients. The Kaplan-Meier plots were generated using gene expression data from microarray analysis and clinical data available at kmplot.com for (A) *IFI16* (n=530), (B) *IRF3* (n=370).