

Figure S1 Receiver operating characteristic curve of this model (A) Internal validation; (B) External validation. AUC, areas under the ROC curve.

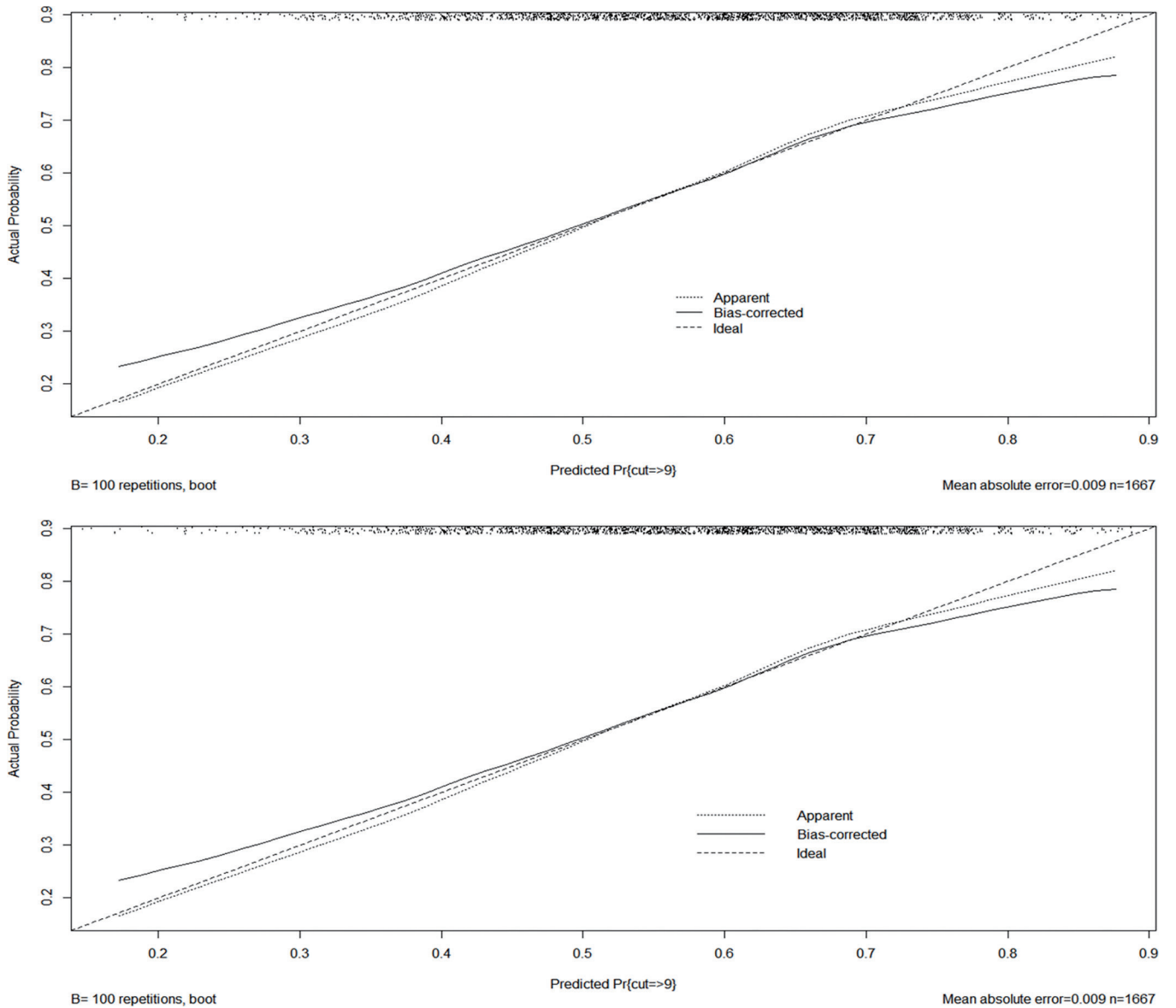


Figure S2 The calibration curve for predicting survival benefit from surgery of stage IV NSCLC patient. NSCLC, non-small cell lung cancer.

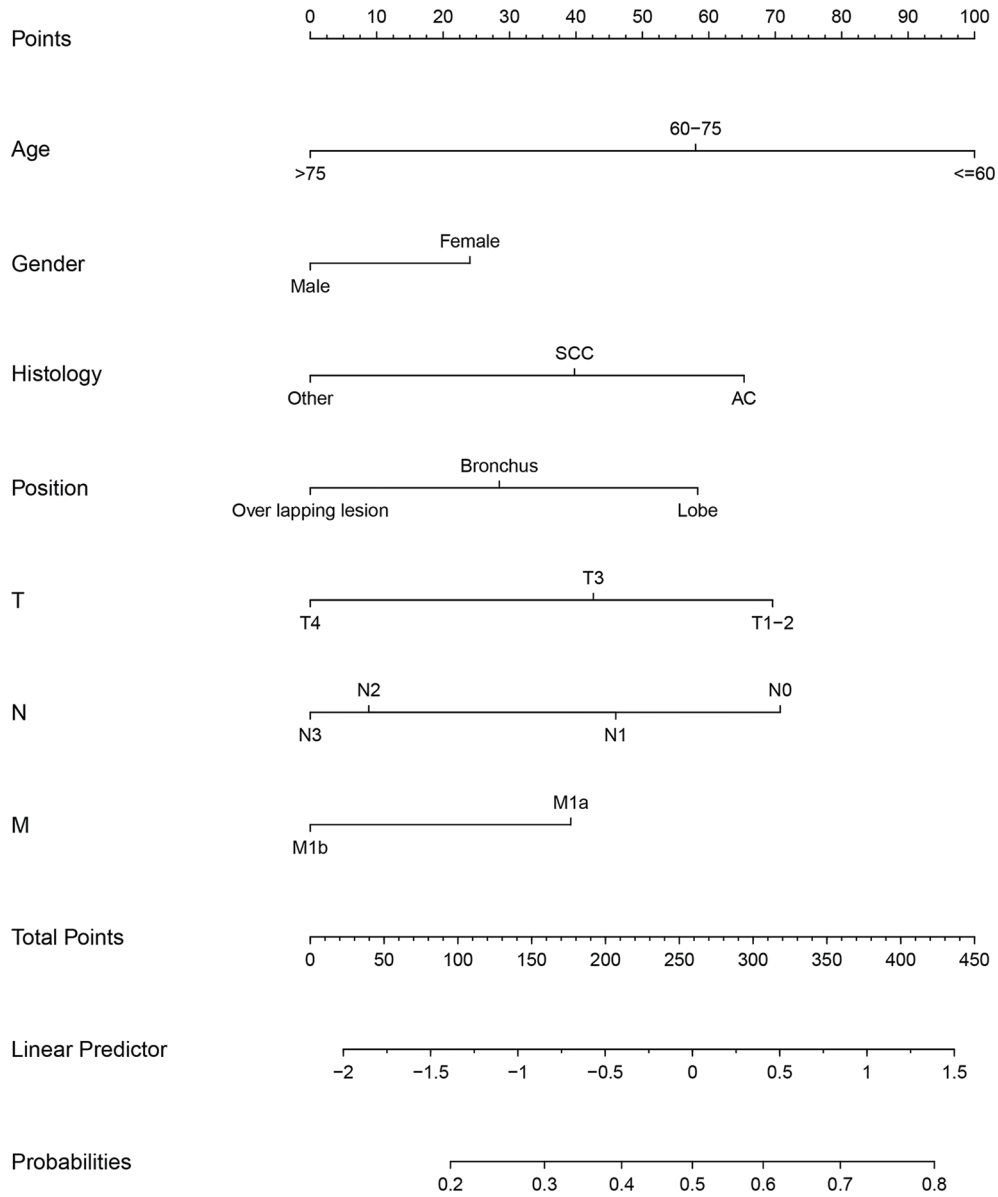


Figure S3 An adjusted nomogram to predict optimal candidates for primary tumor resection. SCC, squamous cell carcinoma; AC, adenocarcinoma.

Table S1 Median survival time of patients according to treatment

	Before PSM		After PSM	
	Surgery vs. non-surgery (HR; 95% CI)	P value	Surgery vs. non-surgery (HR; 95% CI)	P value
Median OS	17 vs. 6 (0.35; 0.34–0.37)	<0.001	17 vs. 8 (0.47; 0.44–0.50)	<0.001
Median CSS	19 vs. 7 (0.37; 0.35–0.39)	<0.001	19 vs. 9 (0.47; 0.44–0.51)	<0.001