

Figure S1 Kaplan-Meier plots for OS in patients with bone metastatic LADC according to combination CTx. The OS did not differ significantly between patients treated with PC *vs.* GC or EC (median OSs were 8.1 *vs.* 12.4 months, respectively; $P=0.297$, log-rank test). BTx, bisphosphonate therapy; LADC, lung adenocarcinoma; OS, overall survival; PC, paclitaxel and carboplatin; GC, gemcitabine and cisplatin; EC, etoposide and cisplatin.

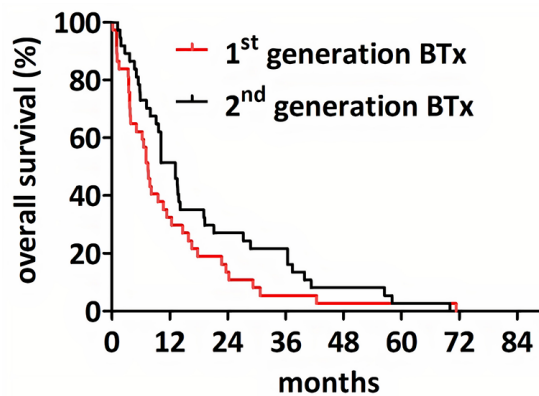


Figure S2 Kaplan-Meier estimates for OS in bone metastatic LADC patients according to different generations of BTx. LADC patients receiving second-generation BTx had significantly increased median OS (*vs.* those treated with first-generation BTx, median OSs were 13.2 *vs.* 7.1 months, respectively; $P=0.041$, Gehan-Breslow-Wilcoxon test). BTx, bisphosphonate therapy; LADC, lung adenocarcinoma; OS, overall survival.