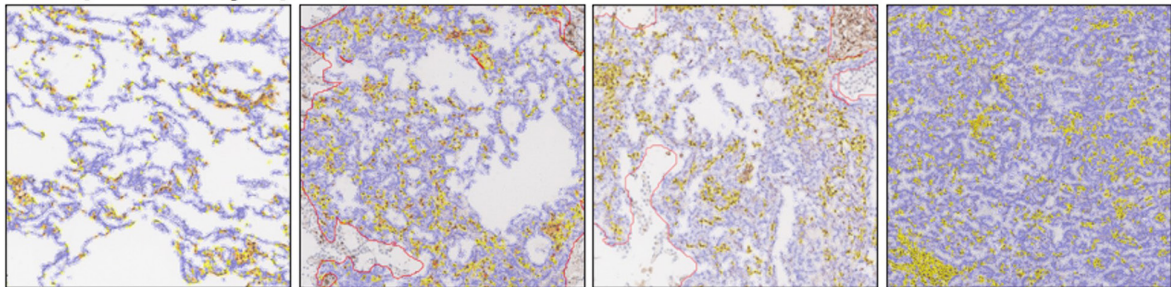
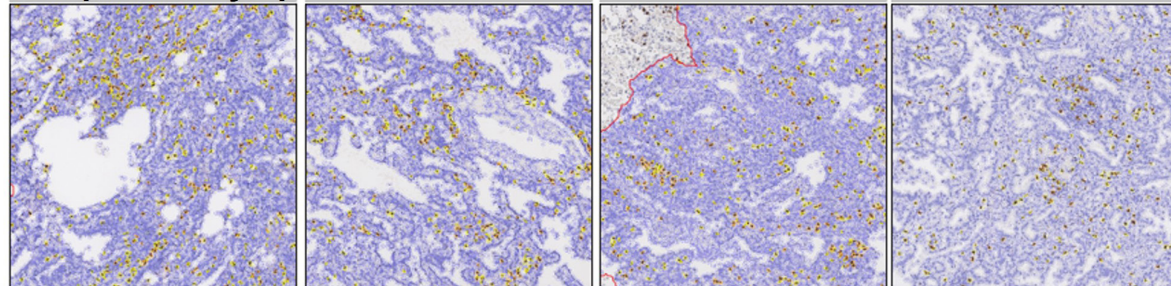


Figure S1 Stratification of LUAD tumors based on the IASLC grading criteria. IASLC, International Association for the Study of Lung Cancer; LUAD, lung adenocarcinoma.

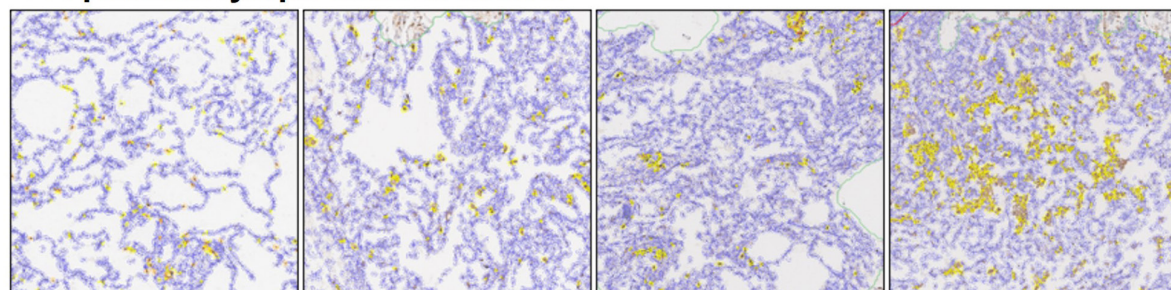
CD4 positive lymph cells in tumor



CD8 positive lymph cells in tumor



CD4 positive lymph cells in stroma



CD8 positive lymph cells in stroma

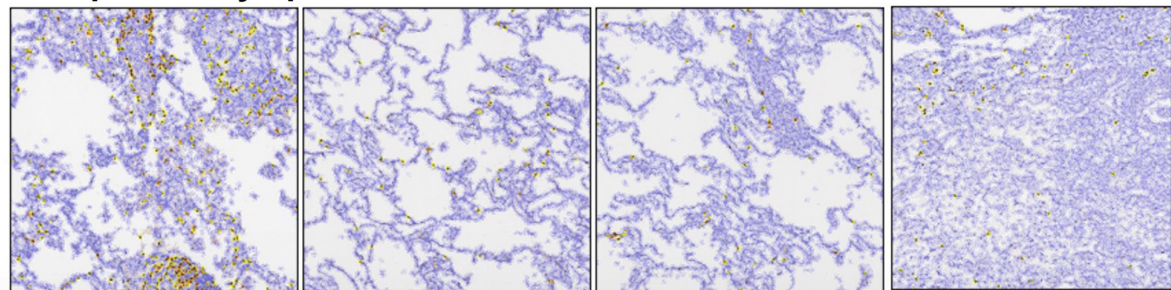


Figure S2 Representative IHC images of CD4⁺ and CD8⁺ staining in lesion and stroma regions in AAH, preinvasive AIS, MIA, and invasive ADC included in this study (microscopy: 200×). AAH, atypical adenomatous hyperplasia; ADC, adenocarcinoma; AIS, adenocarcinoma in situ; IHC, immunohistochemistry; MIA, minimally invasive adenocarcinoma.