

Table S1 Subgroup analysis of loco-regional recurrence among EGFR-wildtype, EGFR-mutant with adjuvant TKI (+), and EGFR-mutant with adjuvant TKI (-)

Subgroup	Loco-regional recurrence	P value (vs. EGFR-wildtype)
EGFR-wildtype	1 (2.0%)	Reference
EGFR-mutant with adjuvant TKI (+)	2 (14.3%)	0.23
EGFR-mutant with adjuvant TKI (-)	3 (18.8%)	0.065

EGFR, epidermal growth factor receptor; TKI, Tyrosine Kinase Inhibitors.

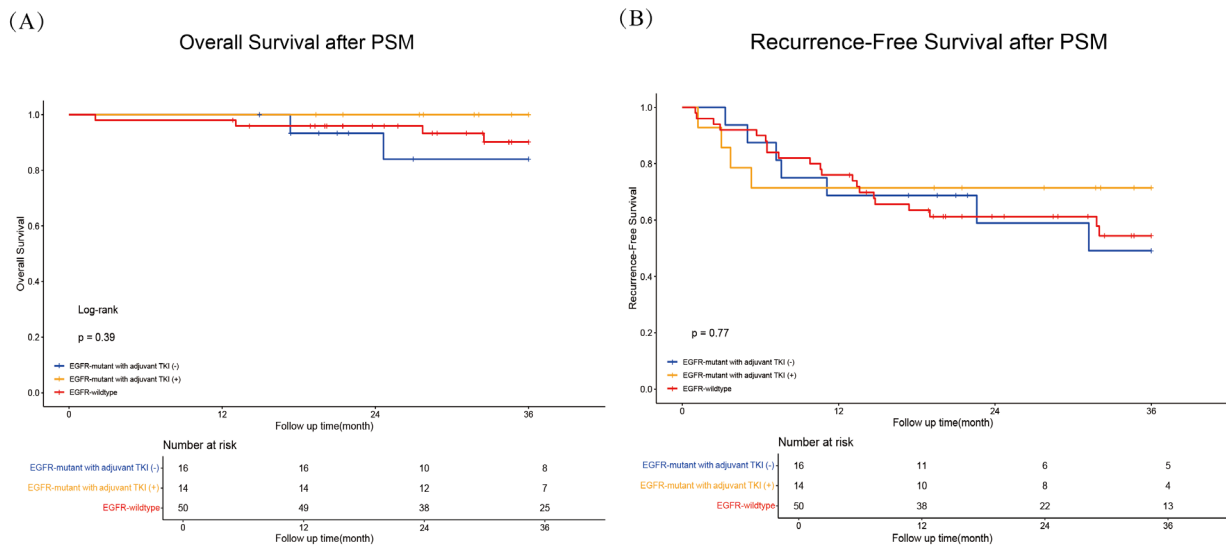


Figure S1 Overall survival and recurrence-free survival among EGFR-wildtype, EGFR-mutant with adjuvant TKI (+), and EGFR-mutant with adjuvant TKI (-).

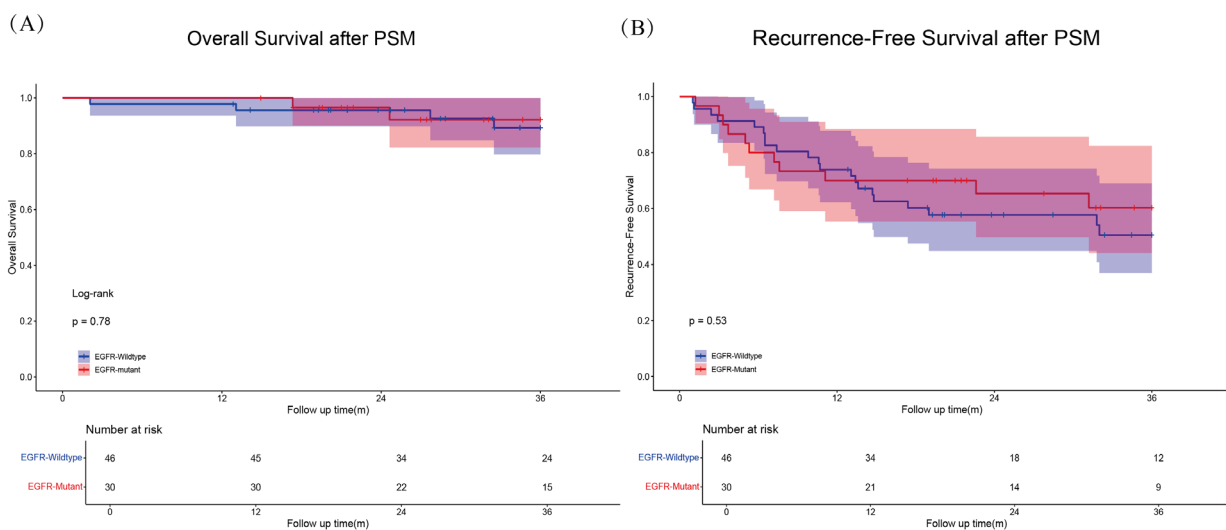


Figure S2 Overall survival and recurrence-free survival for clinically stage II-III LUAD patients with EGFR-wildtype versus EGFR-mutant. LUAD, lung adenocarcinoma.

Table S2 Characteristics of the perioperative outcomes and postoperative pathological response in clinically stage II-III LUAD patients after propensity score matching

Characteristics	After PSM		P value
	EGFR-wildtype (n=46)	EGFR-mutant (n=30)	
Operation time, min	141.9±44.1	142.1±49.6	0.99
Intraoperative blood loss, mL	10 (10, 10)	10 (10, 10)	0.70
ICU stay after surgery			1.00
No	45 (97.8)	30 (100.0)	
Yes	1 (2.2)	0 (0)	
Postoperative hospital stay, day	4 (4, 6)	4 (3, 5)	0.25
Postoperative complications			1.00
No	45 (97.8)	29 (96.7)	
Persistent pulmonary leakage (>7 d)	1 (2.2)	1 (3.3)	
EGFR mutation type			<0.001
No	46 (100.0)	0 (0.0)	
EGFR-19	0 (0.0)	15 (50.0)	
EGFR-21	0 (0.0)	11 (36.7)	
Other	0 (0.0)	4 (13.3)	
PD-L1 expression level			0.69
<1%	13 (28.3)	12 (40.0)	
1–49%	7 (15.2)	3 (10.0)	
≥50%	7 (15.2)	5 (16.7)	
Unknown	19 (41.3)	10 (33.3)	
Adjuvant therapy			<0.001
No	5 (10.9)	3 (10.0)	
Chemoradiotherapy	4 (8.7)	1 (3.3)	
Chemotherapy	11 (23.9)	4 (13.3)	
Chemoimmunotherapy	19 (41.3)	4 (13.3)	
Immune monotherapy	7 (15.2)	4 (13.3)	
TKI-targeted therapy	0 (0.0)	14 (46.7)	
Pathological response			0.23
Non-MPR	32 (69.6)	25 (83.3)	
MPR	7 (15.2)	4 (13.3)	
pCR	7 (15.2)	1 (3.3)	
Radiological response			0.16
SD	22 (47.8)	18 (60.0)	
PR	24 (52.2)	11 (36.7)	
CR	0 (0)	1 (3.3)	
Number of lymph nodes dissected	18.5 (13, 24.8)	19.0 (13.3, 26.8)	0.78
Number of lymph node metastasis	0 (0, 2.75)	0 (0, 4.5)	0.93
Number of N2 lymph nodes dissected	10 (7.25, 16)	8.5 (6.25, 13)	0.28
Number of N2 lymph node metastasis	0 (0, 1)	0 (0, 1)	0.87
T-stage down-staging	28 (60.9)	19 (63.3)	0.83
N-stage down-staging	18 (39.1)	19 (63.3)	0.039
CEA-post NCI	2.7 (1.0, 4.6)	4.1 (2.2, 6.2)	0.05

Data are presented as mean ± standard deviation, median (IQR), or n (%). CEA, carcinoembryonic antigen; CR, completed response; EGFR, epidermal growth factor receptor; ICU, intensive care unit; IQR, interquartile range; LUAD, lung adenocarcinoma; MPR, major pathological response; N, node; NCI, neoadjuvant chemoimmunotherapy; NTT, neoadjuvant targeted therapy; pCR, completed pathological response; PD-L1, programmed death-ligand 1; PR, partial response; PSM, propensity score matching; SD, stable disease; T, tumor; TKI, tyrosine kinase inhibitor.