

Table S1 Comparison of clinical features of high and low ALB or GLR before and after PSM

Characteristics	Before PSM			After PSM			Before PSM			After PSM		
	Low ALB (n=71)	High ALB (n=55)	P	Low ALB (n=38)	High ALB (n=38)	P	Low GLR (n=91)	High GLR (n=35)	P	Low GLR (n=29)	High GLR (n=29)	P
Gender			0.65			0.43			1.00			1.00
Male	63 (88.7)	51 (92.7)		33 (86.6)	36 (94.7)		82 (90.1)	32 (91.4)		26 (89.7)	26 (89.7)	
Female	8 (11.3)	4 (7.3)		5 (13.2)	2 (5.3)		9 (9.9)	3 (8.6)		3 (10.3)	3 (10.3)	
Age (years)	64.41±8.13	60.07±9.06	0.006	62.55±7.31	62.0.3±8.35	0.77	62.52±8.78	62.62±8.580	0.07	63.24±10.11	63.66±9.37	0.87
BMI (kg/m ²)	21.95±2.59	23.24±2.81	0.009	22.87±2.60	22.48±2.20	0.72	21.69±2.71	23.07±3.50	0.10	21.89±2.68	22.03±3.47	0.87
CEA (ng/mL)	13.48±30.82	35.89±155.93	0.25	12.65±21.32	11.74±22.72	0.86	23.29±105.79	26.21±123.92	0.63	8.58±16.24	15.87±23.74	0.18
NSE (µg/L)	80.07±92.90	67.39±83.68	0.45	54.39±47.03	66.72±90.22	0.46	74.35±88.70	50.17±43.39	0.18	61.65±75.58	71.67±84.54	0.64
Smoking history			1.00			1.00			0.06			1.00
No	28 (39.4)	22 (40.0)		17 (44.7)	16 (42.1)		31 (34.1)	19 (54.3)		13 (44.8)	14 (48.3)	
Yes	43 (60.6)	33 (60.0)		21 (55.3)	22 (57.9)		60 (65.9)	16 (45.7)		16 (55.2)	15 (51.7)	
Underlying disease			0.39			0.81						1.00
No	44 (62.0)	39 (70.9)		25 (65.8)	27 (71.1)		61 (67.0)	22 (62.9)		19 (65.5)	18 (62.1)	
Yes	27 (38.0)	16 (29.1)		13 (34.2)	11 (28.9)		30 (33.0)	13 (37.1)		10 (34.5)	11 (37.9)	
Diabetes			0.92			1.00			0.56			1.00
No	63 (88.7)	50 (90.9)		34 (89.5)	35 (92.1)		83 (91.2)	30 (85.7)		26 (89.7)	25 (86.2)	
Yes	8 (11.3)	5 (9.1)		4 (10.5)	3 (7.9)		8 (8.8)	5 (14.3)		3 (10.3)	4 (13.8)	
Clinical stage			0.66			1.00			0.29			0.77
Limited stage	33 (26.2)	17 (23.9)		11 (28.9)	11 (28.9)		21 (23.1)	12 (34.3)		9 (31.0)	7 (24.1)	
Extensive stage	93 (73.8)	54 (76.1)		27 (71.1)	27 (71.1)		70 (76.9)	23 (65.7)		20 (69.0)	22 (75.9)	
Brain metastasis			0.44			0.54			0.88			1.00
No	50 (70.4)	43 (78.2)		33 (86.8)	30 (78.9)		68 (74.7)	25 (71.4)		21 (72.4)	20 (69.0)	
Yes	93 (73.8)	12 (21.8)		5 (13.2)	8 (21.1)		23 (25.3)	10 (28.6)		8 (27.6)	9 (31.0)	
History of radiotherapy			0.46			0.81			0.31			1.00
No	47 (66.2)	32 (58.2)		25 (65.8)	23 (60.5)		60 (65.9)	19 (54.3)		18 (62.1)	18(62.1)	
Yes	24 (33.8)	23 (41.8)		13 (34.2)	15 (39.5)		31 (34.1)	16 (45.7)		11 (37.9)	11 (37.9)	

Data are presented as mean ± standard deviation or n (%). BMI, body mass index; CEA, carcinoembryonic antigen; NSE, neuron-specific enolase.

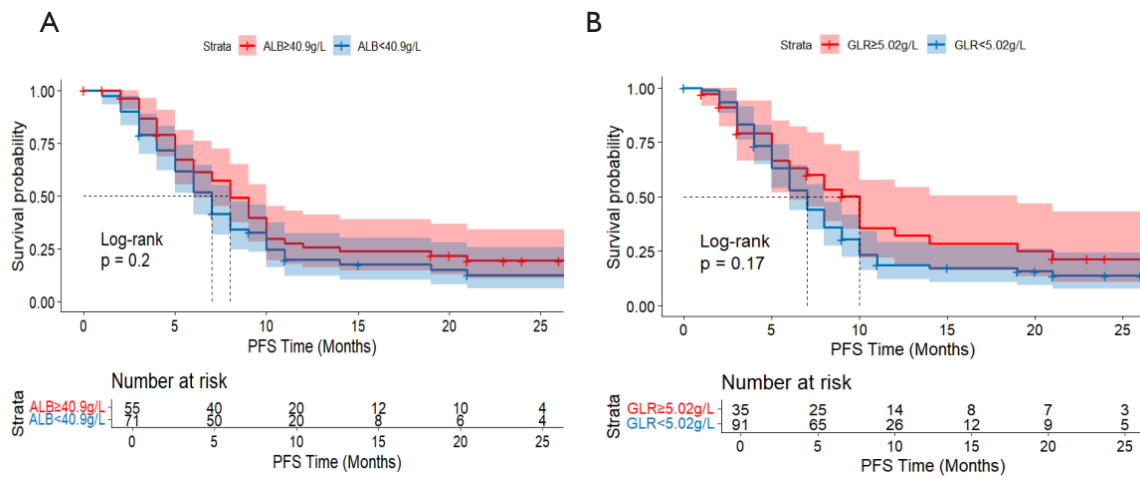


Figure S1 Kaplan-Meier survival plot of PFS by ALB (A) and GLR (B) levels. ALB, albumin; GLR, glucose-to-lymphocyte ratio; PFS, progression-free survival.

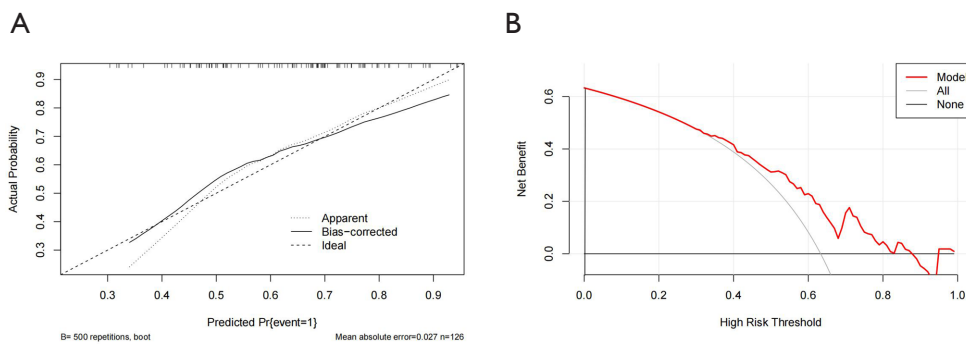


Figure S2 Calibration plot of nomogram mode. (A) This calibration curve illustrates the calibration between the probability of event occurrence predicted by Model 4 and the actual probability of event occurrence. Here, “Apparent” denotes the apparent calibration curve, “Bias-corrected” represents the bias-corrected calibration curve, and “Ideal” indicates the ideal calibration curve. Based on 500 Bootstrap repetitions (B = 500 repetitions, boot), the mean absolute error is 0.027, with a sample size of n=126. (B) DCA curve for the line chart model. The DCA curve illustrates the model’s standardized net benefit at various high-risk thresholds, compared against reference lines representing “All” (where everyone receives treatment) and “None” (where no one receives treatment). DCA, decision curve analysis.