

Table S1 Gene-specific primers used in quantitative real-time PCR

| Gene | Forward primer (5'-3') | Reverse primer (5'-3') |
|---------------|-------------------------|------------------------|
| <i>Gbp5</i> | AGGTCAACGGACCTCGTCT | ATGGCCTTTTGAAGTGTGTC |
| <i>Casp1</i> | AGAGGATTTCTTAACGGATGCA | TCACAAGACCAGGCATATTCTT |
| <i>Pycard</i> | ACAATGACTGTGCTTAGAGACA | CACAGCTCCAGACTCTTCTTTA |
| <i>Nlrp3</i> | GCCGTCTACGTCTTCTTCTTTCC | CATCCGCAGCCAGTGAACAGAG |
| <i>Gsdmd</i> | CTAGCTAAGGCTCTGGAGACAA | GATTCTTTTCATCCCAGCAGTC |
| <i>Il1b</i> | TGCCACCTTTTGACAGTGATG | GCTGCGAGATTTGAAGCTGG |
| <i>Il18</i> | AGACCTGGAATCAGACAACCTT | TCAGTCATATCCTCGAACACAG |

PCR, polymerase chain reaction.

Table S2 Antibodies used in the study

| Target protein | Catalog number | Supplier |
|--|----------------------|---------------------------|
| NF κ BIA/ κ B α | #4814 | Cell Signaling Technology |
| p-NF- κ B/ κ B α | #9242 | Cell Signaling Technology |
| NLRP3 | #15101 | Cell Signaling Technology |
| Cleaved-IL-1 β | #63124 | Cell Signaling Technology |
| GSDMD | #ab209845 | Abcam |
| Caspase1 | #AG-20B-0042-C100100 | AdipoGen |
| Beta-actin | #4967 | Cell Signaling Technology |
| F4/80 | #MCA497 | Bio-Rad |
| ASC | #27601 | BioLegend |
| Peroxidase-conjugated goat anti-rabbit IgG (H+L) | ZB-2301 | ZSGB-BIO |
| Peroxidase-conjugated goat anti-mouse IgG (H+L) | ZB-2305 | ZSGB-BIO |
| Goat anti-mouse IgG (H+L) cross-adsorbed secondary antibody, Alexa Fluor 633 | A-21050 | Thermo Fisher Scientific |
| Goat anti-rabbit IgG (H+L) highly cross-adsorbed secondary antibody, Alexa Fluor 594 | A-11037 | Thermo Fisher Scientific |

IL, interleukin; GSDMD, gasdermin D; NLRP3, NOD-like receptor family pyrin domain-containing protein 3.

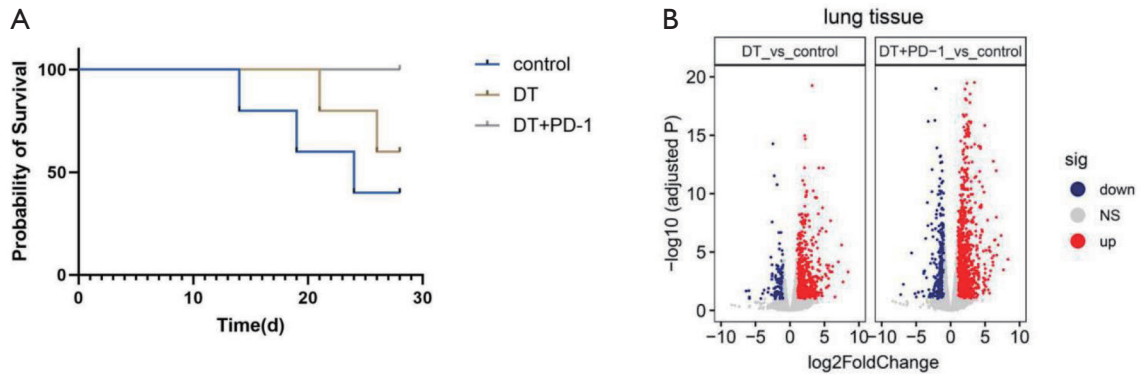


Figure S1 Foxp3-DTR mice (n=5 per group) were assigned to: control, DT, and anti-PD-1 cohorts. (A) Survival curves for three groups. (B) Differentially expressed genes in the lungs of three groups of mice. DT, diphtheria toxin; DTR, diphtheria toxin receptor; ns, not statistically significant; PD-1, programmed death receptor-1.

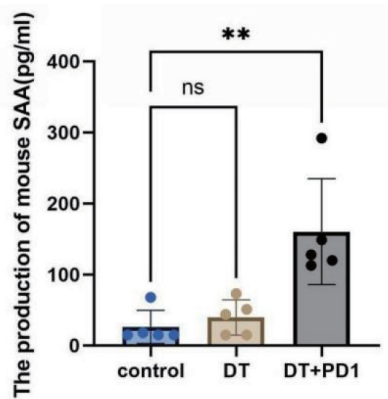


Figure S2 SAA concentration measured by ELISA. Data represent mean \pm SD. **, $P < 0.01$ versus control group. DT, diphtheria toxin; ELISA, enzyme-linked immunosorbent assay; ns, not statistically significant; PD-1, programmed death receptor-1; SAA, serum amyloid A; SD, standard deviation.

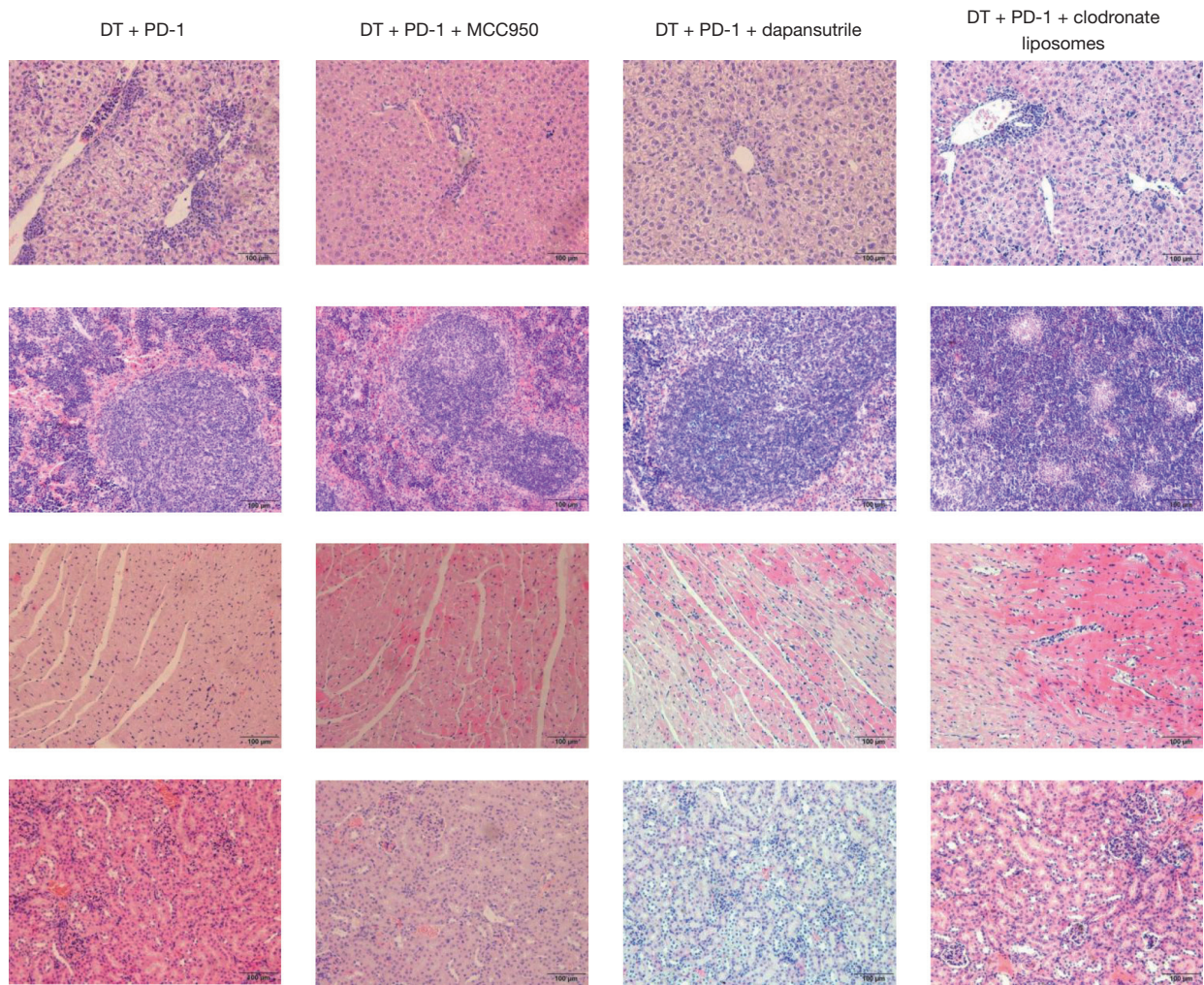


Figure S3 H&E staining of different tissues (scale bar: 100 μ m). DT, diphtheria toxin; H&E, hematoxylin and eosin; PD-1, programmed death receptor-1.