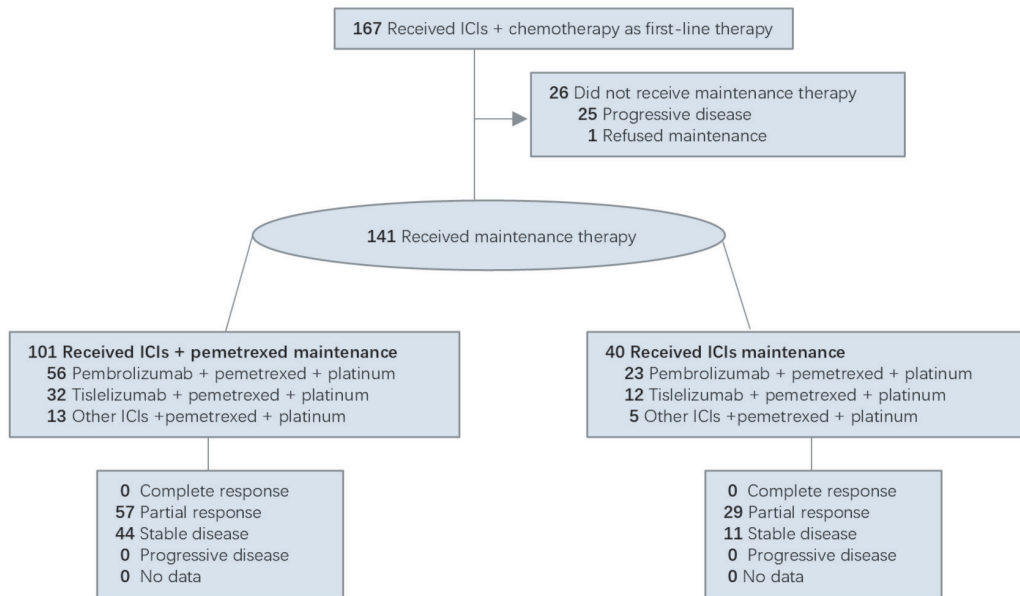
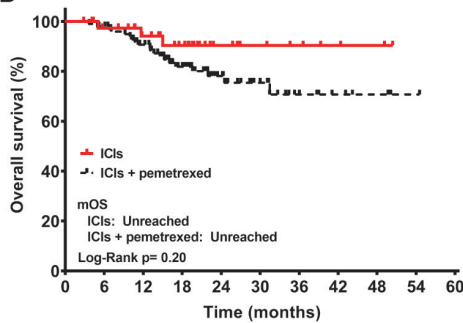


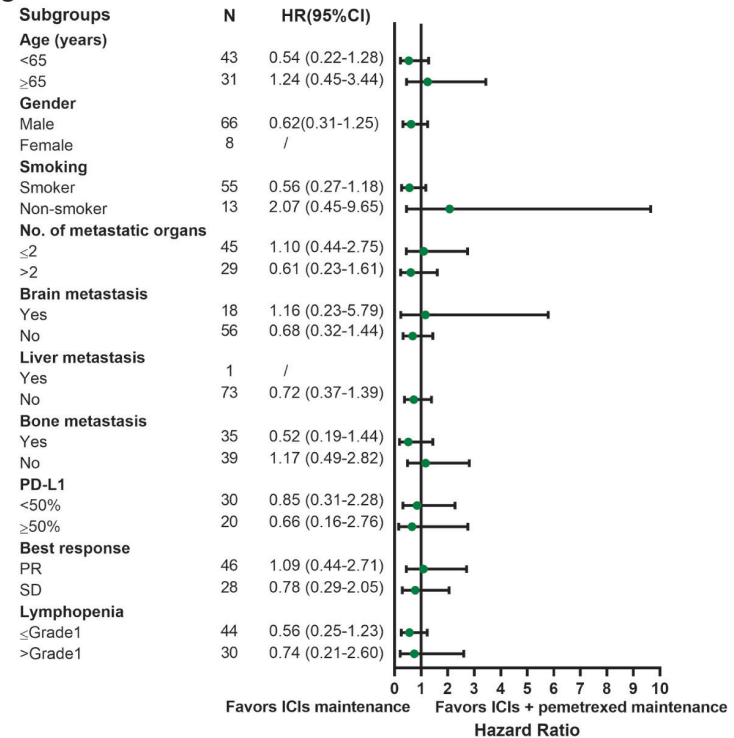
A



B



C



D

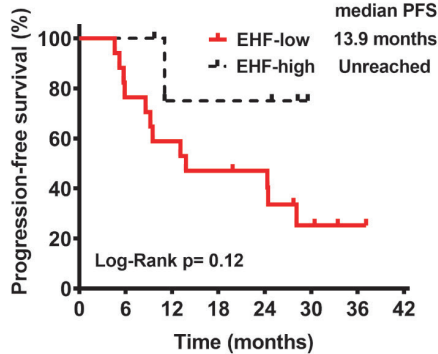


Figure S1 Patient flow diagram and survival. (A) Patient flow diagram. (B) OS of patients receiving maintenance therapy. Kaplan-Meier curves of OS in patients of ICI maintenance group vs. ICI + pemtrexed maintenance group. (C) Forest plot of PFS hazard ratios in propensity score matching-adjusted cohort. (D) PFS of patients receiving ICI + pemtrexed maintenance according to *EHF* expression. Low expression of *EHF* gene had the tendency to correlate with shorter PFS in ICI + pemtrexed maintenance group. CI, confidence interval; HR, hazard ratio; ICI, immune checkpoint inhibitor; mOS, median OS; OS, overall survival; PD-L1, programmed cell death ligand 1; PFS, progression-free survival; PR, partial response; SD, stable disease.

Table S1 Baseline characteristics of patients between two maintenance groups after propensity score matching

Characteristic	Maintenance subgroups		P value	Standardized mean differences
	ICIs + pemetrexed (n=37)	ICIs (n=37)		
Age			0.81	0.055
<65 years	22 (59.5)	21 (56.8)		
≥65 years	15 (40.5)	16 (43.2)		
Smoking status			0.27	0.404
Previous or current	26 (70.3)	29 (78.4)		
Never	6 (16.2)	7 (18.9)		
Unknown	5 (13.5)	1 (2.7)		
Sex			>0.99	<0.001
Male	33 (89.2)	33 (89.2)		
Female	4 (10.8)	4 (10.8)		
PD-L1			>0.99	<0.001
≤49%	15 (40.5)	15 (40.5)		
≥50%	10 (27.0)	10 (27.0)		
Unknown	12 (32.4)	12 (32.4)		

Data are presented as n (%). ICIs, immune checkpoint inhibitors.