

Supplementary

Table S1 Best response associated with second-line nintedanib plus docetaxel, grouped by time from start of first-line therapy until start of second-line therapy (<9 months or ≥9 months)

Response	<9 months (n=52)	≥9 months (n=28)	Total (n=80)
Objective response rate, n (%)	19 (36.5)	11 (39.3)	30 (37.5)
Complete response	0	1 (3.6)	1 (1.3)
Partial response	19 (36.5)	10 (35.7)	29 (36.3)
Stable disease, n (%)	17 (32.7)	11 (39.3)	28 (35.0)
Disease control rate, n (%)	36 (69.2)	22 (78.6)	58 (72.5)
Progressive disease, n (%)	16 (30.8)	6 (21.4)	22 (27.5)

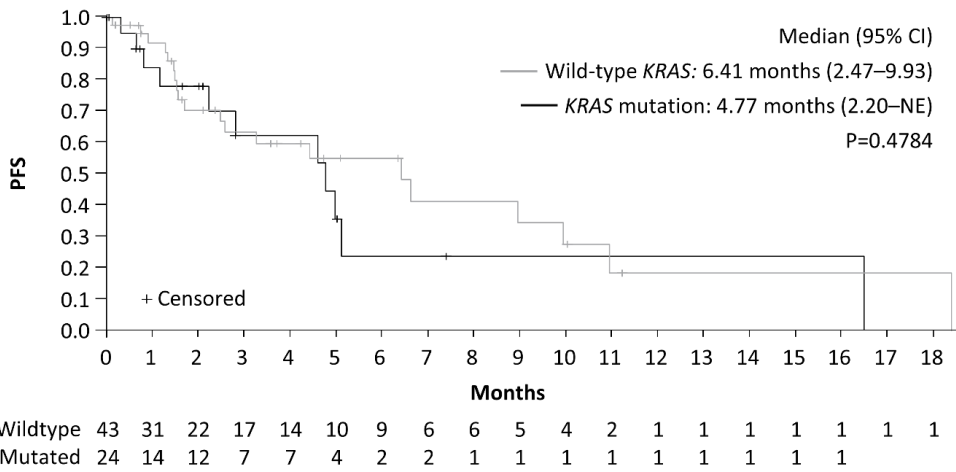


Figure S1 Kaplan–Meier plot of progression-free survival of patients with wild type or mutant *KRAS* (initial biopsy). CI, confidence interval; NE, not estimable; PFS, progression-free survival.