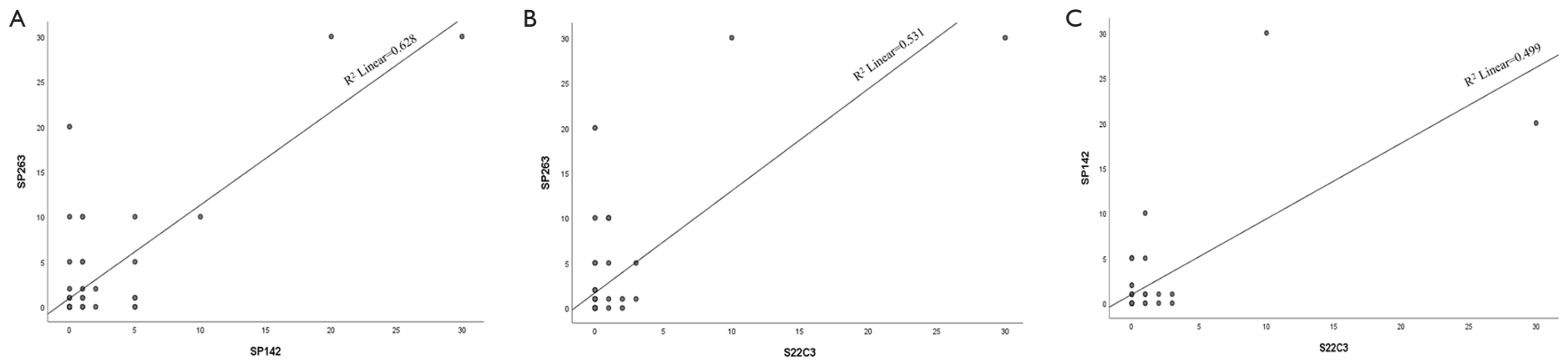


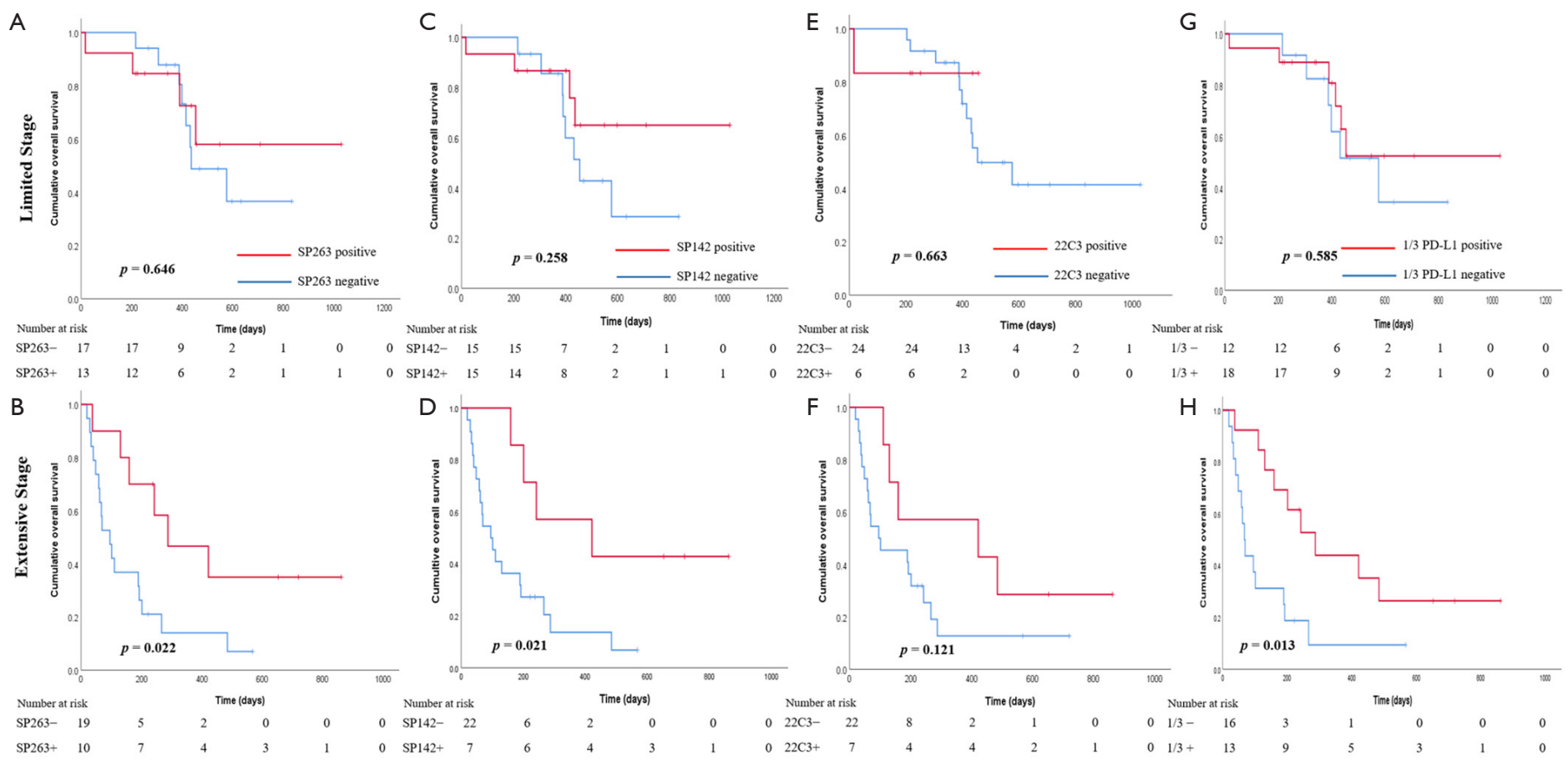
**Table S1** Baseline characteristics according to the positive of each PD-L1 assays

Variables	No.	Three Validated PD-L1 Immunohistochemistry Assays								
		SP263 Expression			SP142 Expression			22C3 Expression		
		< 1%	≥ 1%	p	< 1%	≥ 1%	p	< 1%	≥ 1%	p
Age				0.043			0.019			0.747
<70	34	17	17		17	17		26	8	
≥70	25	19	6		20	5		20	5	
Sex				0.072			0.396			0.999
Male	53	30	23		32	21		41	12	
Female	6	6	0		5	1		5	1	
PS				0.174			0.184			0.426
0-1	48	27	21		28	20		36	12	
2-4	11	9	2		9	2		10	1	
Smoking				0.274			0.286			0.999
Current+Former	56	33	23		34	22		43	13	
Never	3	3	0		3	0		3	0	
NLR				0.508			0.641			0.754
<2.5	21	14	7		14	7		17	4	
≥2.5	38	22	16		23	15		29	9	
CEA (ng/ml) †				0.597			0.999			0.202
0-5.2	11	5	6		6	5		10	1	
>5.2	18	10	8		10	8		12	6	
LDH (IU/L) †				0.883			0.732			0.867
0-250	21	12	9		13	8		16	5	
>250	27	16	11		18	9		20	7	
T stage				0.555			0.181			0.735
1-2	18	12	6		9	9		15	3	
3-4	41	24	17		28	13		31	10	
N stage				0.490			0.152			0.676
0-1	10	5	5		4	6		7	3	
2-3	49	31	18		33	16		39	10	
Stage				0.486			0.040			0.701
Limited (LS)	30	17	13		15	15		24	6	
Extensive (ES)	29	19	10		22	7		22	7	
Brain meta				0.999			0.999			0.398
No	50	30	20		31	19		40	10	
Yes	9	6	3		6	3		6	3	
SP263							<0.001			<0.001
Negative	36				30	6		34	2	
Positive	23				7	16		12	11	
SP142				<0.001						0.010
Negative	37	30	7					33	4	
Positive	22	6	16					13	9	
22C3				<0.001			0.010			
Negative	46	34	12		33	13				
Positive	13	2	11		4	9				

†Dichotomized by cutoff of normal value. CEA, carcinoembryonic antigen; ECOG PS, Eastern Cooperative Oncology Group performance status; LDH, lactate dehydrogenase; NLR, neutrophil/lymphocyte ratio.



**Figure S1** Correlation of PD-L1 expression using the three PD-L1 assays. Scatter diagrams illustrating the correlation between expression levels according to (A) PD-L1 SP263 and SP142 assays, (B) PD-L1 SP263 and 22C3 assays, and (C) PD-L1 SP142 and 22C3 assays.



**Figure S2** Kaplan–Meier curves of overall survival according to PD-L1 expression status by SCLC stage. (A, B) PD-L1 SP263 in limited-stage (LS) and extensive-stage (ES), (C, D) PD-L1 SP142 in LS and ES, (E, F) PD-L1 IHC 22C3 in LS and ES, (G, H) positive results for at least one of the three PD-L1 assays (1/3 PD-L1) in LS and ES.