

Figure S1 The associations of immune-related adverse events (irAEs) with disease progression. Patients with tumor progression had a lower risk of pneumonitis, neutropenia, nephritis, and bone marrow failure.

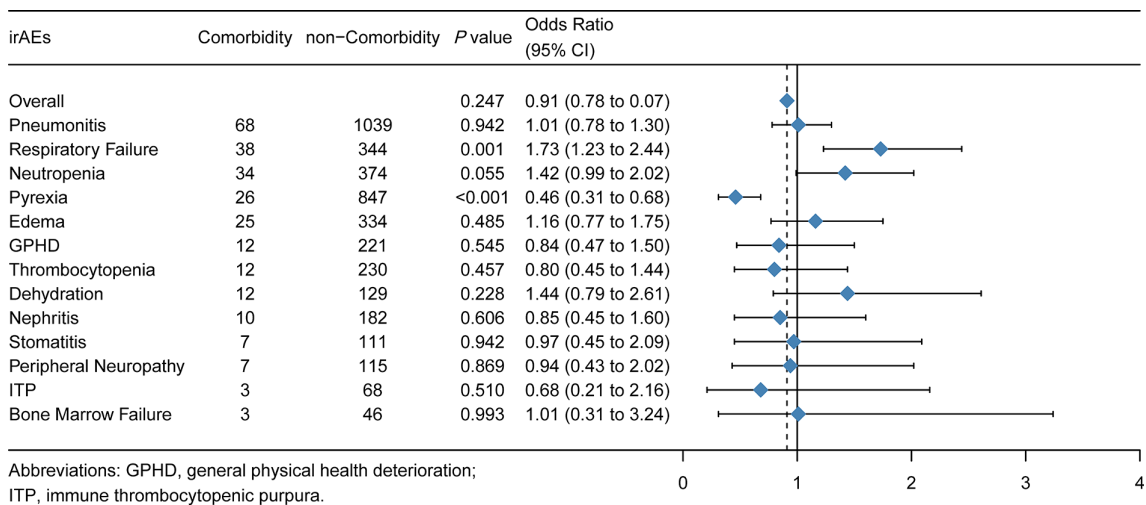


Figure S2 The associations of immune-related adverse events (irAEs) with comorbidity. Patients with comorbidity had lower risk of pyrexia. However, there was no statistical significance between comorbidity status with overall irAE risk.

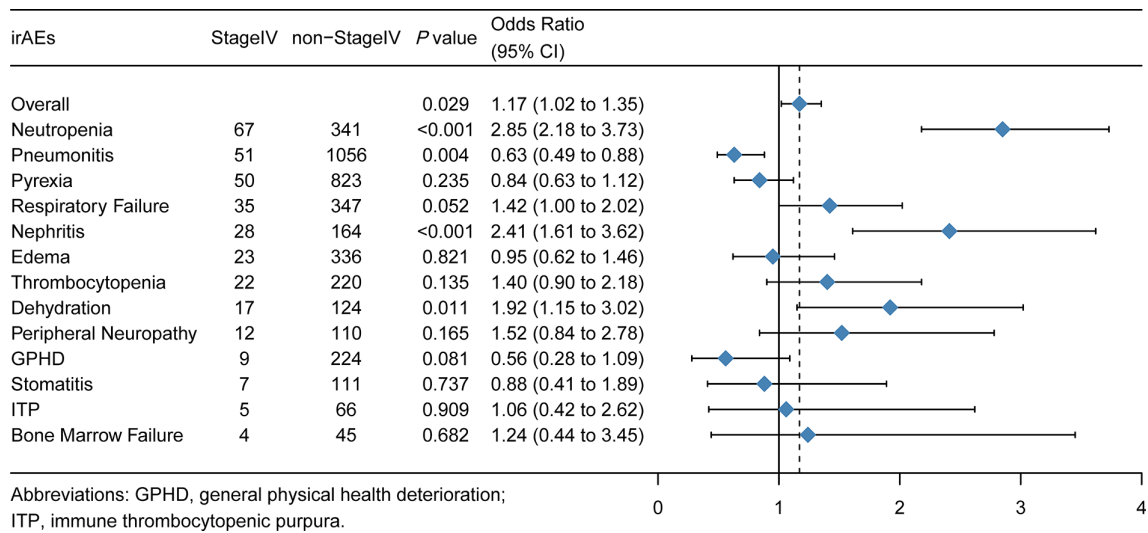


Figure S3 The associations of immune-related adverse events (irAEs) with stage. Patients with stage IV had increased overall irAE risk but reduced the risk of pneumonitis.

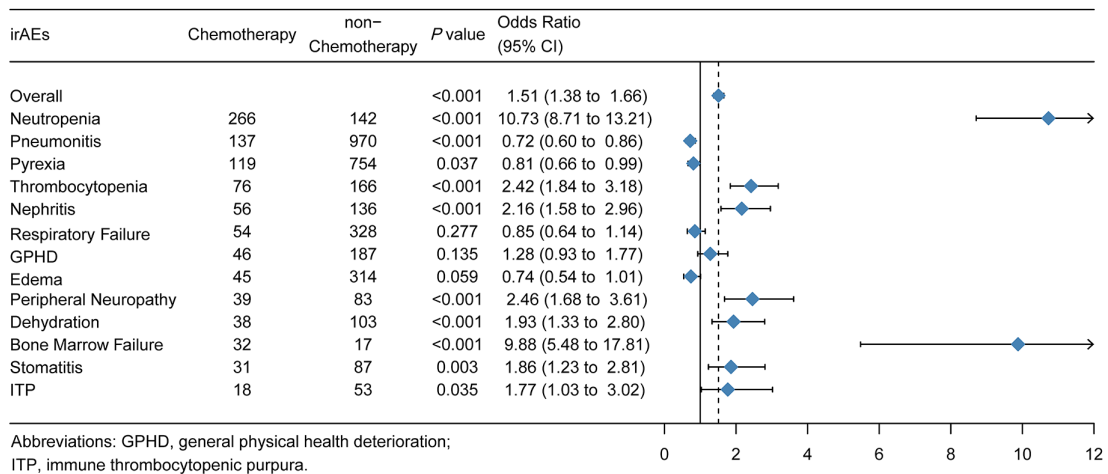


Figure S4 The associations of immune-related adverse events (irAEs) with chemotherapy. Patients with tumor progression had a higher risk of neutropenia, thrombocytopenia, nephritis, neuropathy peripheral, dehydration, bone marrow failure, stomatitis, ITP.