

Figure S1 The optimal cut-off value as determined by sum-score was 263.

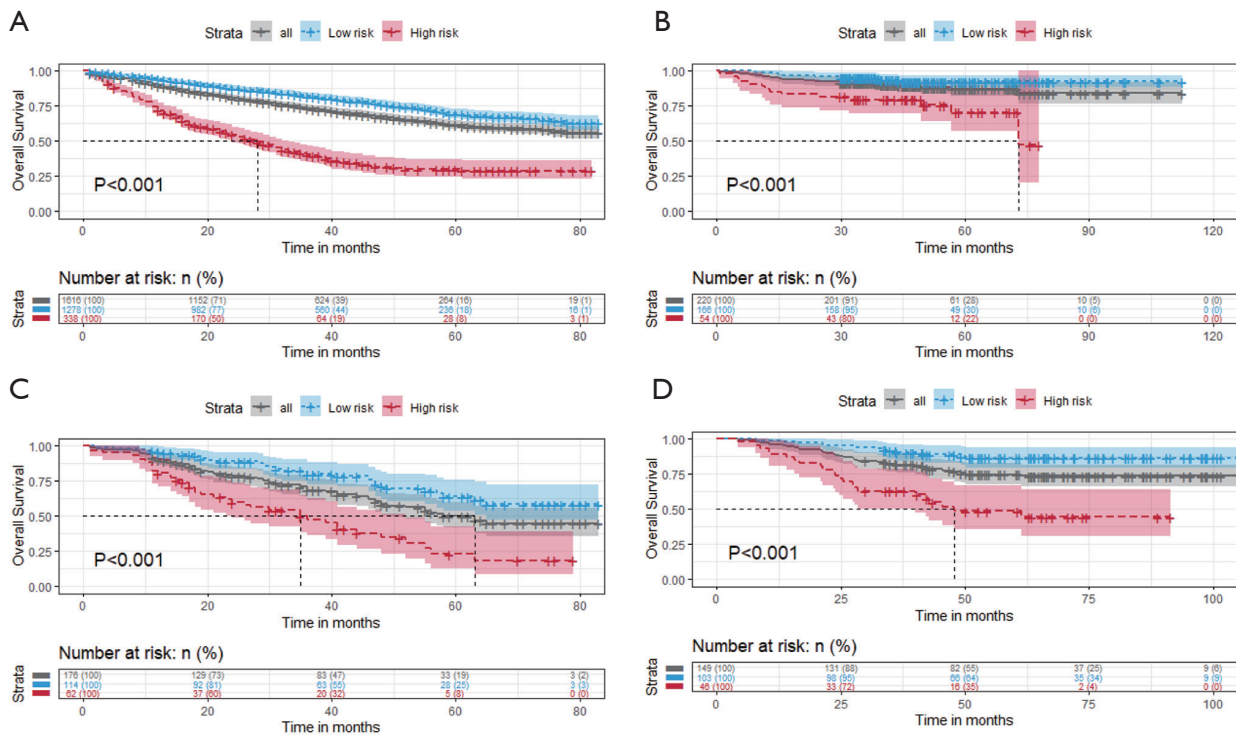


Figure S2 Kaplan-Meier curves of OS for risk stratified by histological subtypes in a subgroup analysis. Kaplan-Meier curves of OS for risk stratification in patients with pure LIMA in the SEER cohort (A); Kaplan-Meier curves of OS for risk stratification in patients with mixed LIMA in the SEER cohort (B); Kaplan-Meier curves of OS for risk stratification in patients with pure LIMA in the external validation cohort (C), Kaplan-Meier curves of OS for risk stratification in patients with mixed LIMA in the external validation cohort (D).

# LIMA

**Age**  
>60 years old

**Sex**  
Male

**Differentiatin.grade**  
Poorly differentiated

**Lymphadenectomy**  
No

**Extent.of.surgery**  
Sub-bobectomy

**T.stage**  
T4

**N.stage**  
N+

**M.stage**  
M1

Predicted Survival at this Follow Up:

time  
1 60 83

Alpha blending (transparency)

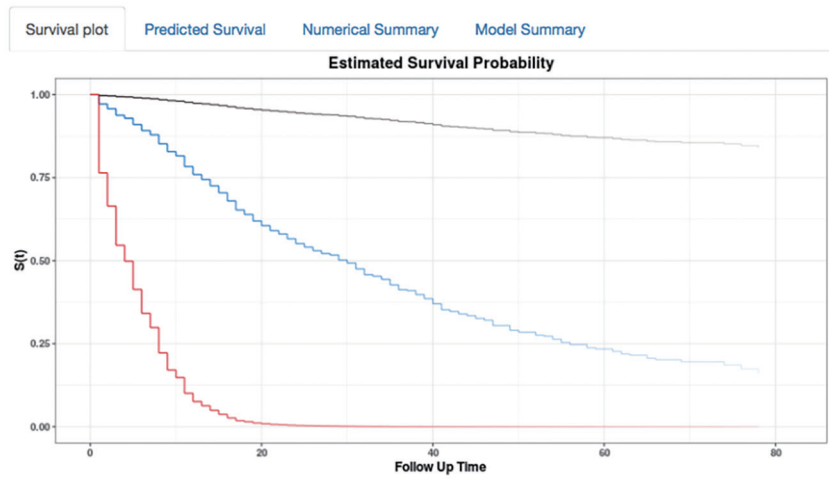


Figure S3 Online web server interface for the dynamic prognostic nomogram of LIMA patients.