

Figure S1 Distribution of age among lung cancer patients based on race for White (n=46,896), Black (n=7,928), API (n=6,989), AIAN (n=148). API, Asian or Pacific Islander; AIAN, American Indian/Alaska Native.

Table S1 Univariate and time-dependent multivariate^a analyses of OS and LCSS for the lung cancer patients variables included in the study

Variable	Univariate				Multivariate ^a			
	OS		LCSS		OS		LCSS	
	HR (95% CI)	P value	HR (95% CI)	P value	HR (95% CI)	P value	HR (95% CI)	P value
Race	<0.01							
White	Reference		Reference		Reference		Reference	
Black	1.08 (1.05, 1.11)	<0.01	1.07 (1.04, 1.10)	<0.01	0.97 (0.94, 0.99)	0.01	0.94 (0.92, 0.97)	<0.01
API	0.91 (0.89, 0.94)	<0.01	0.93 (0.91, 0.96)	<0.01	0.84 (0.82, 0.87)	<0.01	0.85 (0.83, 0.88)	<0.01
AIAN	1.07 (0.89, 1.28)	0.47	1.02 (0.84, 1.24)	0.86	1.13 (0.94, 1.35)	0.18	1.08 (0.88, 1.31)	0.46
Age at diagnosis, year	<0.01							
00-49	Reference		Reference		Reference		Reference	
50-59	1.05 (1.00, 1.10)	0.038	1.01 (0.97, 1.06)	0.67	1.06 (1.02, 1.11)	<0.01	1.03 (0.98, 1.08)	0.19
60-69	1.09 (1.04, 1.14)	<0.01	1.00 (0.96, 1.04)	0.99	1.20 (1.15, 1.25)	<0.01	1.12 (1.08, 1.18)	<0.01
70-79	1.26 (1.21, 1.31)	<0.01	1.10 (1.05, 1.15)	<0.01	1.36 (1.30, 1.42)	<0.01	1.22 (1.17, 1.28)	<0.01
80+	1.67 (1.60, 1.75)	<0.01	1.42 (1.36, 1.49)	<0.01	1.48 (1.41, 1.55)	<0.01	1.31 (1.25, 1.38)	<0.01
Gender	<0.01							
Female	Reference		Reference		Reference		Reference	
Male	1.24 (1.21, 1.26)	<0.01	1.21 (1.19, 1.24)	<0.01	1.25 (1.23, 1.28)	<0.01	1.22 (1.20, 1.24)	<0.01
Marital status (at diagnosis)								
Married (including common law)	Reference		Reference		Reference		Reference	
Separated	1.23 (1.20, 1.25)	<0.01	1.20 (1.17, 1.22)	<0.01	1.13 (1.11, 1.16)	<0.01	1.11 (1.09, 1.14)	<0.01

Table S1 (continued)

Table S1 (continued)

Variable	Univariate				Multivariate ^a			
	OS		LCSS		OS		LCSS	
	HR (95% CI)	P value	HR (95% CI)	P value	HR (95% CI)	P value	HR (95% CI)	P value
Single (never married)	1.16 (1.13, 1.19)	<0.01	1.16 (1.13, 1.19)	<0.01	1.09 (1.06, 1.13)	<0.01	1.08 (1.04, 1.11)	<0.01
Unknown	1.04 (1.00, 1.09)	0.07	1.02 (0.97, 1.07)	0.41	0.96 (0.91, 1.00)	0.07	0.94 (0.90, 0.99)	0.02
Site								
Right	Reference		Reference		Reference		Reference	
Left	1.01 (0.99, 1.03)	0.43	1.01 (0.99, 1.03)	0.42	1.00 (0.98, 1.02)	0.76	1.01 (0.99, 1.03)	0.59
Unknown	2.15 (2.06, 2.23)	<0.01	2.22 (2.13, 2.32)	<0.01	1.04 (1.00, 1.09)	0.05	1.04 (0.99, 1.08)	0.10
Year of diagnosis								
2012–2015	Reference		Reference		Reference		Reference	
2008–2011	1.08 (1.05, 1.10)	<0.01	1.08 (1.05, 1.11)	<0.01	1.06 (1.04, 1.09)	<0.01	1.06 (1.04, 1.09)	<0.01
2004–2007	1.13 (1.11, 1.16)	<0.01	1.15 (1.12, 1.18)	<0.01	1.12 (1.09, 1.14)	<0.01	1.13 (1.10, 1.15)	<0.01
Tumor grading								
Grade I	Reference		Reference		Reference		Reference	
Grade II	1.50 (1.43, 1.58)	<0.01	1.62 (1.53, 1.72)	<0.01	1.30 (1.24, 1.37)	<0.01	1.36 (1.28, 1.45)	<0.01
Grade III	2.45 (2.33, 2.57)	<0.01	2.85 (2.69, 3.02)	<0.01	1.54 (1.46, 1.62)	<0.01	1.64 (1.55, 1.74)	<0.01
Grade IV	3.38 (3.18, 3.59)	<0.01	4.08 (3.82, 4.36)	<0.01	1.64 (1.54, 1.75)	<0.01	1.75 (1.63, 1.88)	<0.01
Unknown	3.70 (3.53, 3.89)	<0.01	4.41 (4.17, 4.66)	<0.01	1.49 (1.42, 1.57)	<0.01	1.58 (1.49, 1.67)	<0.01
Histologic type								
Adenocarcinomas	Reference		Reference		Reference		Reference	
Squamous	1.19 (1.16, 1.22)	<0.01	1.11 (1.09, 1.14)	<0.01	1.14 (1.11, 1.17)	<0.01	1.10 (1.07, 1.13)	<0.01
Epithelial neoplasms	1.87 (1.83, 1.91)	<0.01	1.91 (1.87, 1.95)	<0.01	1.24 (1.22, 1.27)	<0.01	1.24 (1.21, 1.27)	<0.01
Others	0.85 (0.81, 0.90)	<0.01	0.83 (0.78, 0.87)	<0.01	1.12 (1.07, 1.18)	<0.01	1.13 (1.07, 1.19)	<0.01
AJCC stage								
0-I	Reference		Reference		Reference		Reference	
II	1.54 (1.47, 1.62)	<0.01	1.88 (0.78, 1.99)	<0.01	1.73 (1.64, 1.82)	<0.01	2.04 (1.93, 2.17)	<0.01
III	2.73 (2.65, 2.81)	<0.01	3.65 (3.52, 3.78)	<0.01	2.17 (2.09, 2.24)	<0.01	2.71 (2.60, 2.82)	<0.01
IV	5.60 (5.45, 5.75)	<0.01	7.85 (7.60, 8.11)	<0.01	3.93 (3.81, 4.06)	<0.01	5.15 (4.95, 5.35)	<0.01
Surgery								
Yes	Reference		Reference		Reference		Reference	
No	4.74 (4.63, 4.86)	<0.01	5.70 (5.54, 5.87)	<0.01	26.59 (23.99, 29.48)	<0.01	46.62 (41.27, 52.66)	<0.01
Chemotherapy								
Yes	Reference		Reference		Reference		Reference	
No	1.01 (1.00, 1.03)	0.128	0.93 (0.91, 0.94)	<0.01	17.45 (15.82, 19.25)	<0.01	28.72 (25.59, 32.22)	<0.01
Radiation								
Yes	Reference		Reference		Reference		Reference	
No	0.78 (0.77, 0.80)	<0.01	0.75 (0.74, 0.94)	<0.01	10.30 (9.33, 11.36)	<0.01	16.96 (15.11, 19.04)	<0.01

^a, adjusted for age, sex, race, year of diagnosis, site, histology, AJCC, marital status, grading and therapy. OS, overall survival; LCSS, lung cancer specific survival; API, Asian or Pacific Islander; AIAN, American Indian/Alaska Native; CI, confidential interval; HR, hazard ratio.

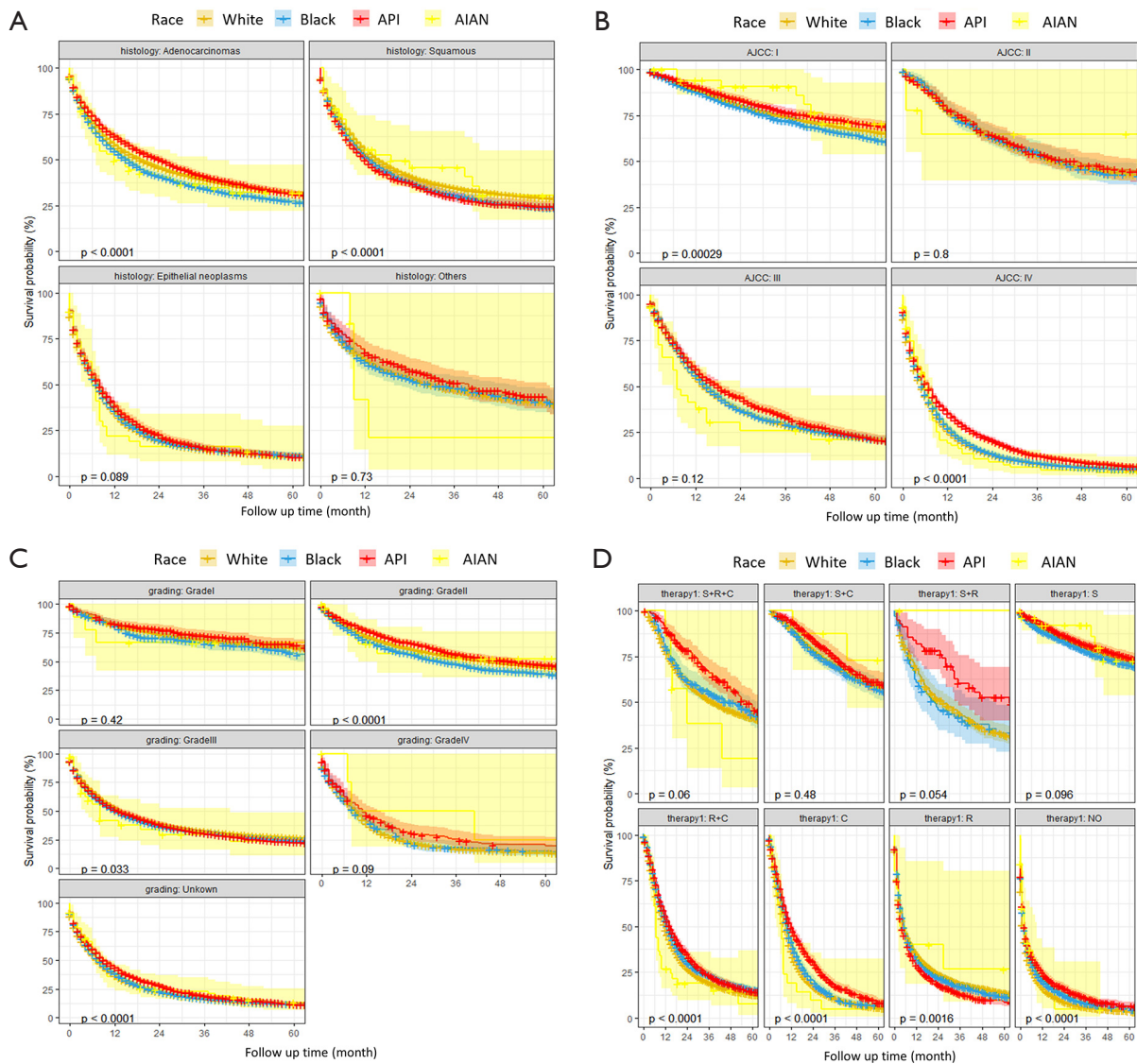


Figure S2 Kaplan-Meier curves comparing LCSS of all racial patients with lung cancer according to: (A) different histological subtypes; (B) different tumor stages; (C) different tumor grade; (D) different therapy. LCSS, Lung cancer specific survival; API, Asian or Pacific Islander; AIAN, American Indi-an/Alaska Native; S, surgery; R, radiation; C, chemotherapy.

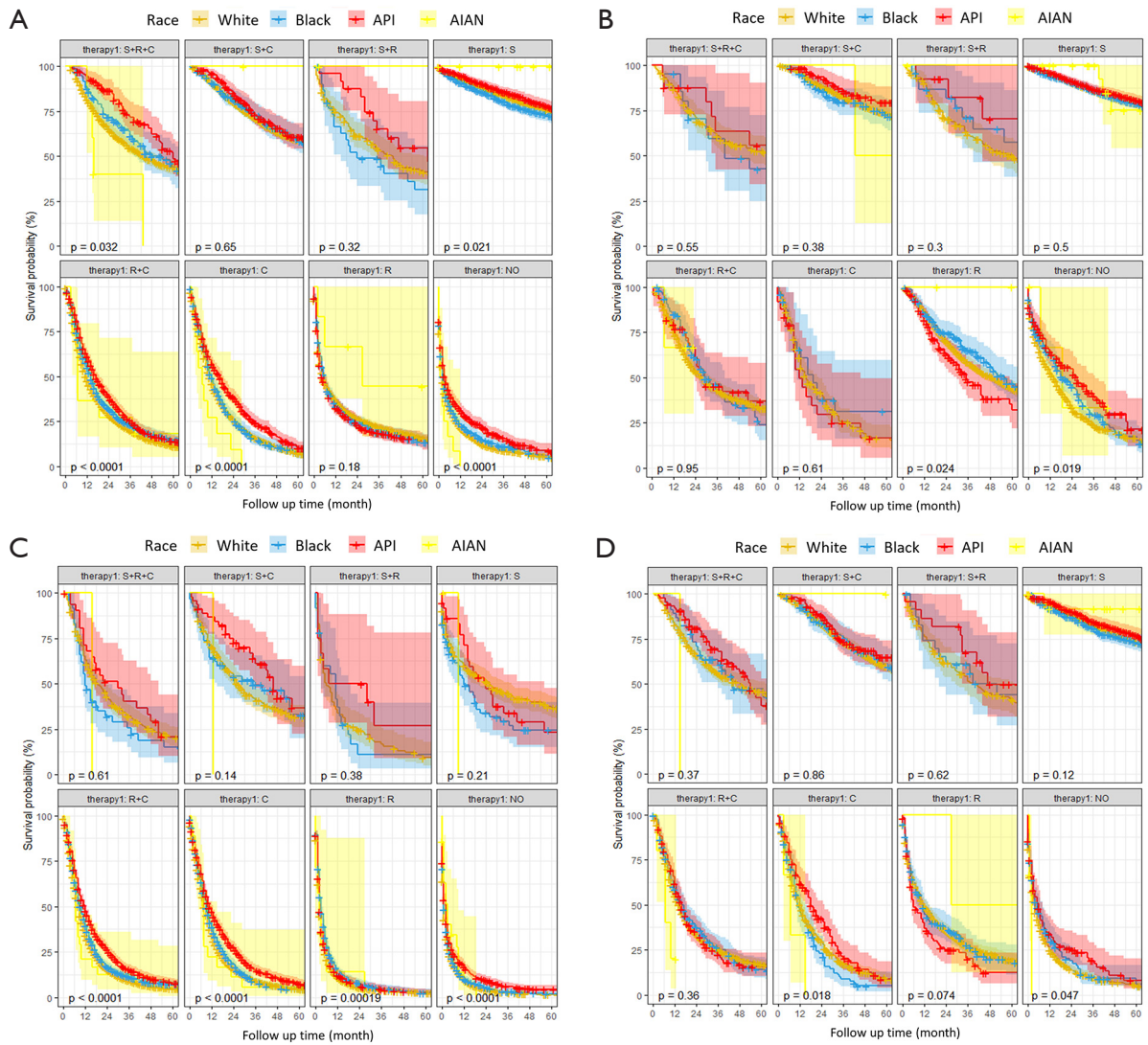


Figure S3 Kaplan-Meier curves comparing LCSS of all racial patients with lung cancer according to different treatment methods in: (A) adenocarcinoma patients; (B) stage I patients; (C) stage IV patients; (D) grade II patients. LCSS, Lung cancer specific survival; API, Asian or Pacific Islander; AIAN, American Indian/Alaska Native; S, surgery; R, radiation; C, chemotherapy.

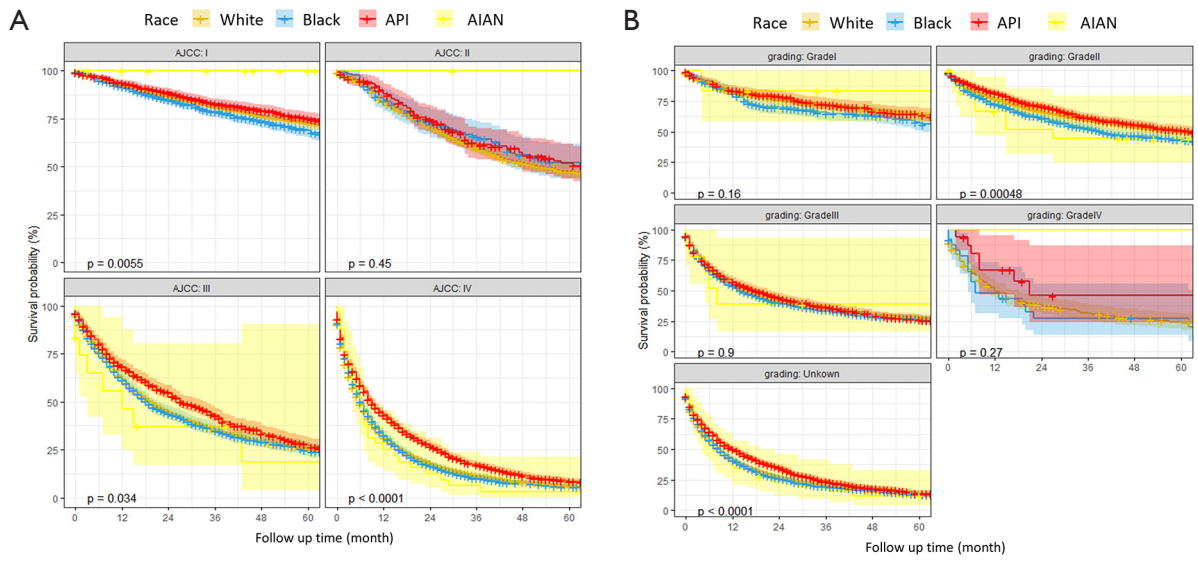


Figure S4 Kaplan-Meier curves comparing LCSS of all racial patients with lung adenocarcinomas according to: (A) different tumor stages; (B) different tumor grade. LCSS, Lung cancer specific survival; API, Asian or Pacific Islander; AIAN, American Indian/Alaska Native.

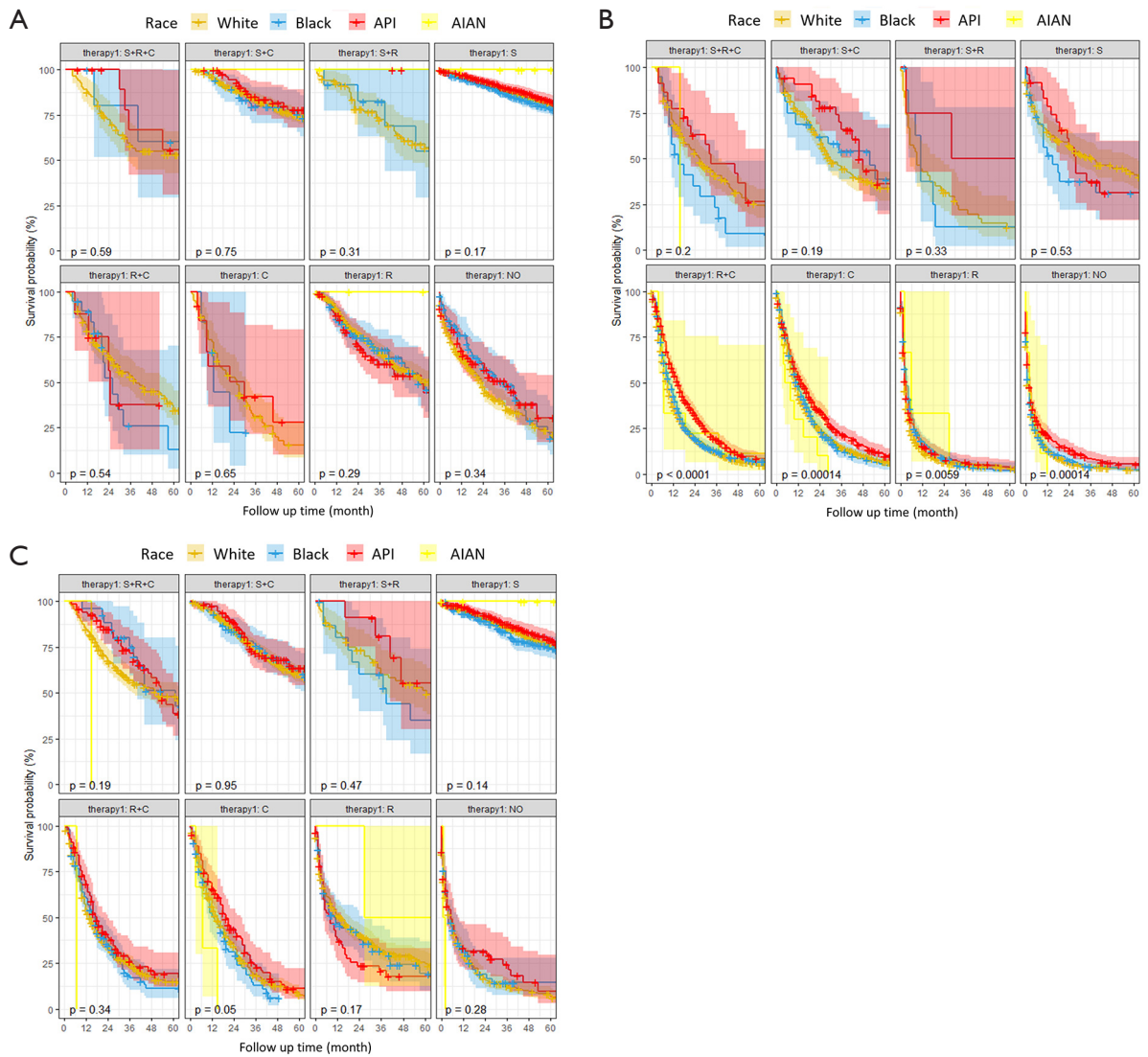


Figure S5 Kaplan-Meier curves comparing LCSS of all racial patients with lung adenocarcinoma patients according to different treatment methods in: (A) stage I; (B) stage IV; (C) grade II. LCSS, Lung cancer specific survival; API, Asian or Pacific Islander; AIAN, American Indian/Alaska Native; S, surgery; R, radiation; C, chemotherapy.

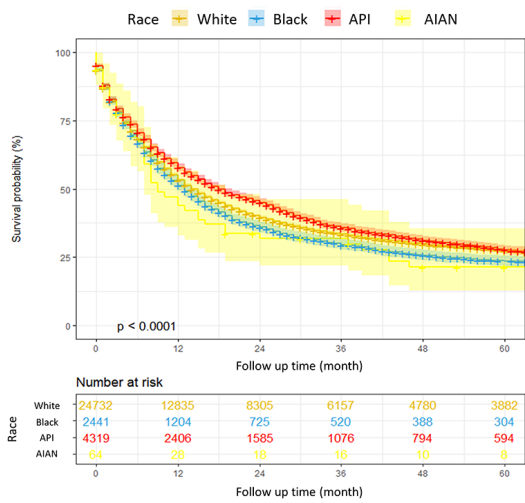


Figure S6 Kaplan-Meier curves comparing LCSS of all racial groups in married lung cancer patients. LCSS, lung cancer specific survival; API, Asian or Pacific Islander; AIAN, American Indian/Alaska Native.