

Figure S1 The optimal cut-off value determined by the X-tile software. (A) The optimal cutoff values of N-ratio in all patients. (B) The optimal cutoff values of positive lymph nodes (N-num) in all patients.

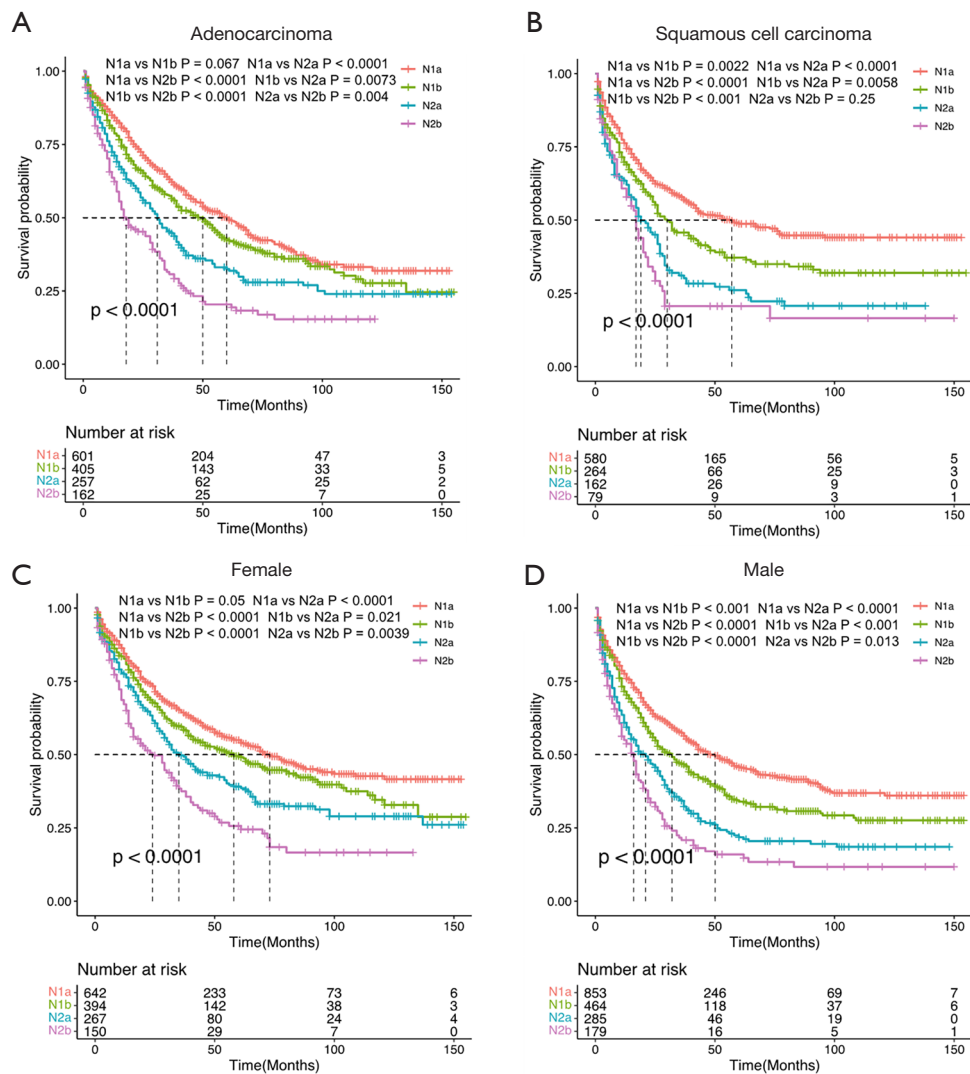


Figure S2 The cancer-specific survival in patients of different histology or gender classified by the N-new classification. (A) The cancer-specific survival in patients of adenocarcinoma classified by the N-new classification. (B) The cancer-specific survival in patients of squamous cell carcinoma classified by the N-new classification. (C) The cancer-specific survival in female classified by the N-new classification. (D) The cancer-specific survival in male classified by the N-new classification.

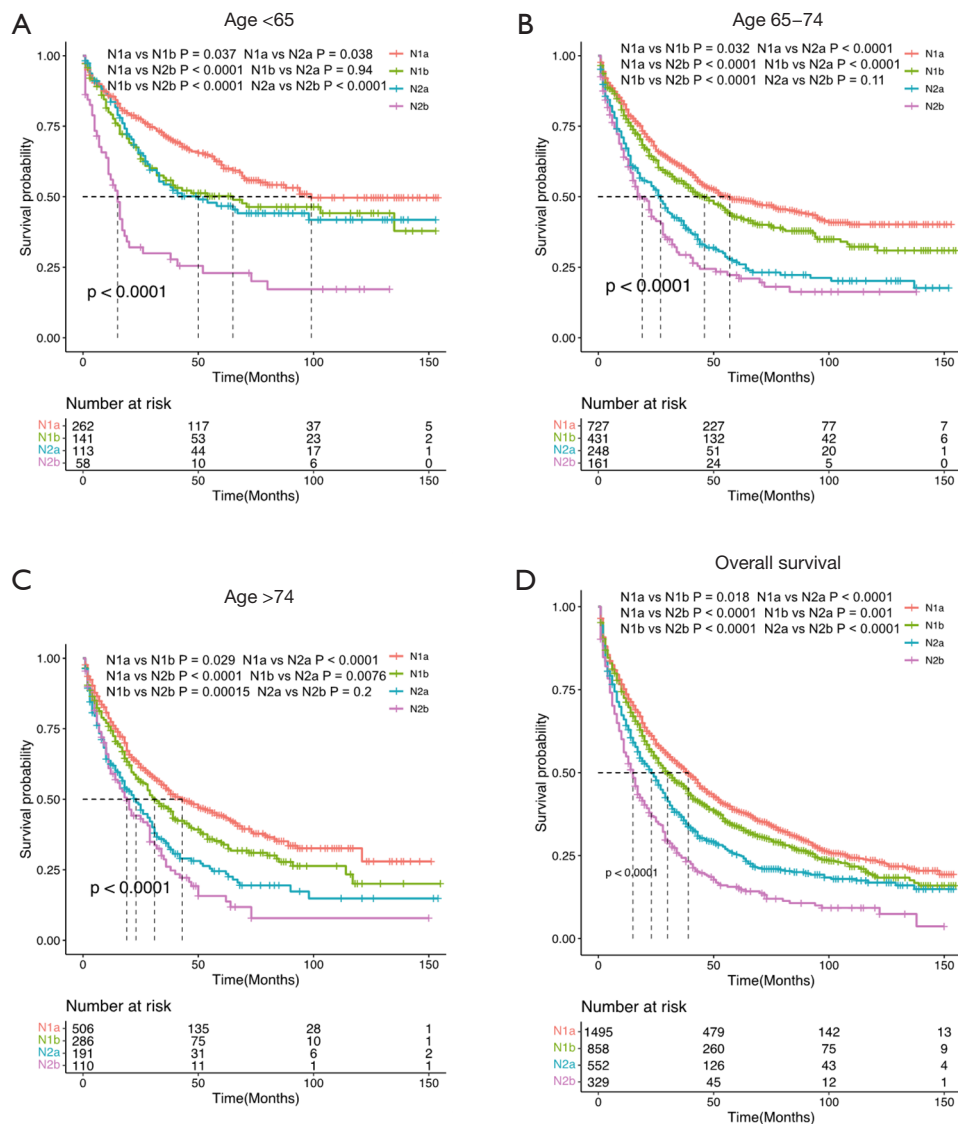


Figure S3 The cancer-specific survival in patients with different ages classified by the N-new classification and the overall survival classified by the N-new classification. (A) The cancer-specific survival in patients with age <65 years old classified by the N-new classification. (B) The cancer-specific survival in patients with age ≥ 65 and ≤ 74 years old classified by the N-new classification. (C) The cancer-specific survival in patients with age >74 years old classified by the N-new classification. (D) The overall survival in patients classified by the N-new classification.