

Figure S1 Forest plot of the association between ICIs retreatment and efficacy. (A) Objective response rate (ORR) (P<0.05); (B) disease control rate (DCR) (P=0.05). ICI, immune checkpoint inhibitor; CI, confidence interval; M-H, Mantel-Haenszel model.

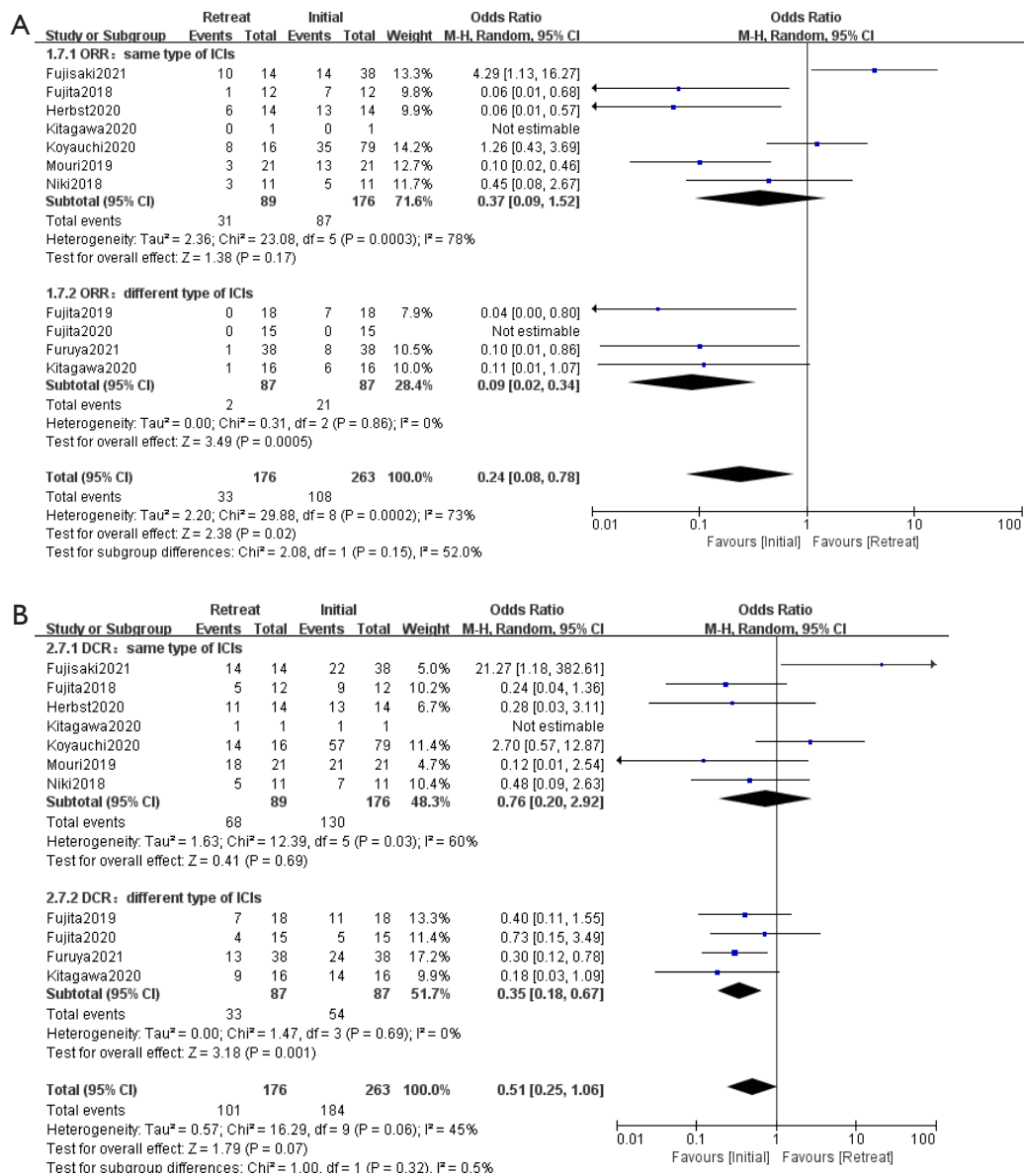


Figure S2 Subgroup analyses of the association between the efficacy of ICIs retreatment and the type of ICIs retreatment. ICI retreatment defined as re-administration with ICIs for patients who discontinued initial ICIs treatment for any reason after a period of break. Same type of ICIs referred as anti-PD-1 or anti-PD-L1 for both initial and retreated immunotherapy. Different type of ICIs implied that patients were retreated with ICI switching from anti-PD-1 to anti-PD-L1 or anti-PD-L1 to anti-PD-1. (A) Objective response rate (ORR); (B) Disease control rate (DCR). CI, confidence interval; M-H Random, Mantel-Haenszel model.