

Figure S1 Forest plots of 95% confidence intervals along with the point estimates of the transition probability for each of the five transitions at 1, 2, 3, and 5 year(s) since surgery.

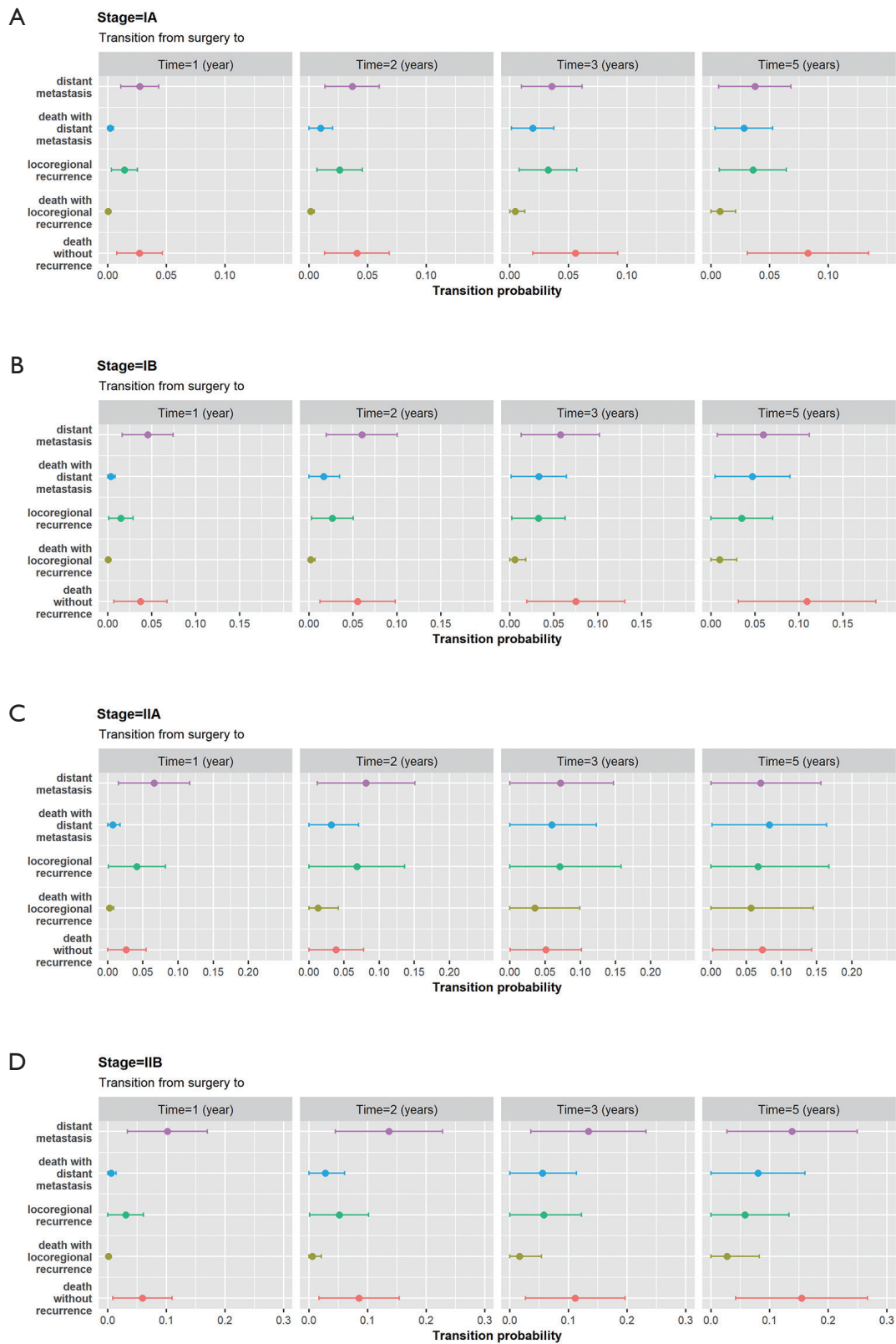


Figure S2 Forest plots of 95% confidence intervals along with the point estimates of the transition probability for each of the five transitions at 1, 2, 3, and 5 year(s) since surgery according to the pathological TNM stages: (A) for IA, (B) for IB, (C) for IIA, and (D) for IIB.