

**Table S1** Baseline characteristics of 7,311 lung cancer patients by histological classification

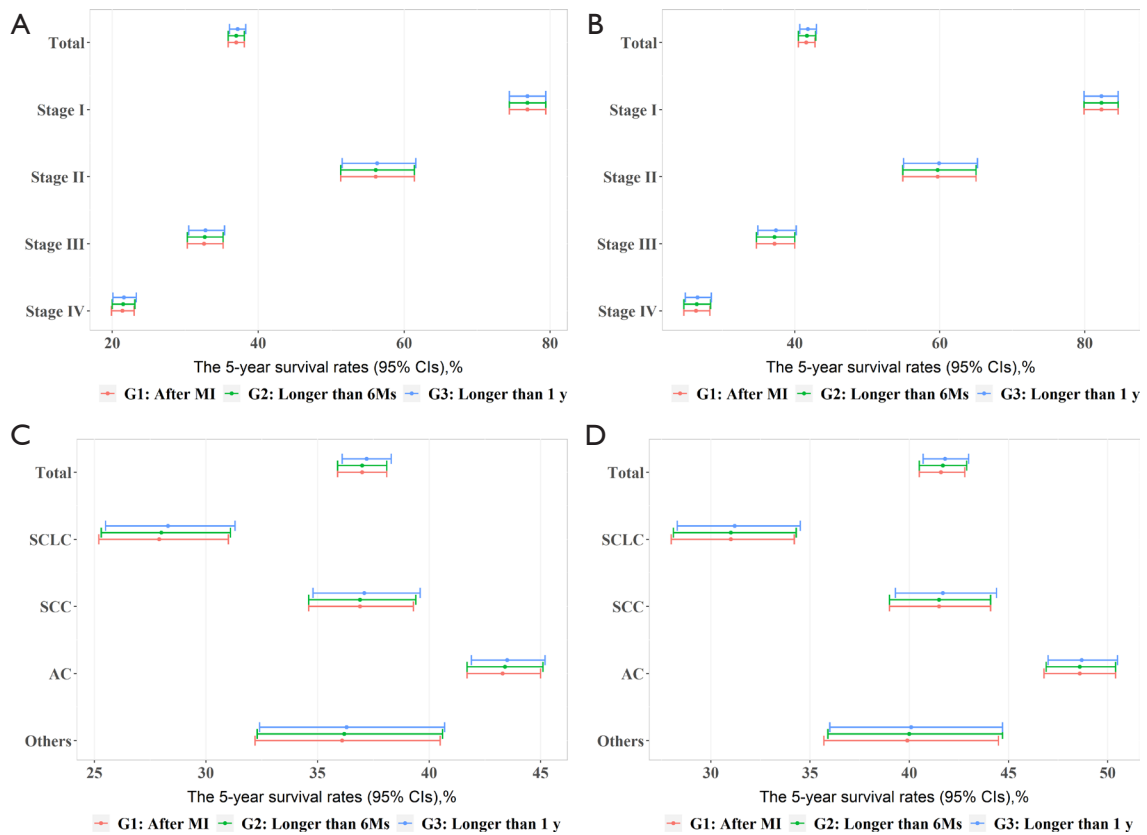
Characteristic	Total <sup>a</sup>	Histological Classification					P value <sup>d</sup>
		Small cell carcinoma	Squamous cell carcinoma	Adenocarcinoma	Others <sup>b</sup>	Unknown <sup>c</sup>	
Age							<0.01
<60	3,401 (46.5)	470 (50.1)	609 (38.6)	1,695 (50.8)	267 (51.5)	360 (38.3)	
≥60	3,910 (53.5)	468 (49.9)	970 (61.4)	1,640 (49.2)	251 (48.5)	581 (61.7)	
Sex							<0.01
Male	4,912 (67.2)	725 (77.3)	1,431 (90.6)	1,759 (52.7)	362 (69.9)	635 (67.5)	
Female	2,399 (32.8)	213 (22.7)	148 (9.4)	1,576 (47.3)	156 (30.1)	306 (32.5)	
Smoking							<0.01
Never-smoker	3,283 (44.9)	321 (34.2)	298 (18.9)	1,997 (59.9)	216 (41.7)	451 (47.9)	
Current-smoker	3,148 (43.1)	502 (53.5)	1,002 (63.5)	1,025 (30.7)	239 (46.1)	380 (40.4)	
Former-smoker	812 (11.1)	106 (11.3)	268 (17)	280 (8.4)	59 (11.4)	99 (10.5)	
Unknown <sup>c</sup>	68 (0.9)	9 (1.0)	11 (0.7)	33 (1.0)	4 (0.8)	11 (1.2)	
Alcohol assumption							<0.01
No	4,968 (68.0)	573 (61.1)	840 (53.2)	2,541 (76.2)	343 (66.2)	671 (71.3)	
Yes	2,281 (31.2)	359 (38.3)	726 (46.0)	767 (23.0)	172 (33.2)	257 (27.3)	
Unknown <sup>c</sup>	62 (0.8)	6 (0.6)	13 (0.8)	27 (0.8)	3 (0.6)	13 (1.4)	
Disease history							<0.01
No	5,547 (75.9)	725 (77.3)	1,201 (76.1)	2,449 (73.4)	419 (80.9)	753 (80.0)	
Yes <sup>e</sup>	1,654 (22.6)	202 (21.5)	338 (21.4)	856 (25.7)	98 (18.9)	160 (17.0)	
Unknown <sup>c</sup>	110 (1.5)	11 (1.2)	40 (2.5)	30 (0.9)	1 (0.2)	28 (3.0)	
Family history							=0.55
No	6,553 (89.6)	829 (88.4)	1,382 (87.5)	3,005 (90.1)	485 (93.6)	852 (90.5)	
Yes <sup>f</sup>	283 (3.9)	36 (3.8)	62 (3.9)	152 (4.6)	18 (3.5)	15 (1.6)	
Unknown <sup>c</sup>	475 (6.5)	73 (7.8)	135 (8.5)	178 (5.3)	15 (2.9)	74 (7.9)	
Body Mass Index <sup>g</sup>							<0.01
Underweight	342 (4.7)	39 (4.2)	94 (6.0)	121 (3.6)	24 (4.6)	64 (6.8)	
Normal	3,372 (46.1)	459 (48.9)	719 (45.5)	1,561 (46.8)	233 (45.0)	400 (42.5)	
Overweight	1,508 (20.6)	207 (22.1)	275 (17.4)	767 (23.0)	128 (24.7)	131 (13.9)	
Unknown <sup>c</sup>	2,089 (28.6)	233 (24.8)	491 (31.1)	886 (26.6)	133 (25.7)	346 (36.8)	
Pathological stage							<0.01
Stage I	1,067 (14.6)	51 (5.4)	201 (12.7)	704 (21.1)	71 (13.7)	40 (4.3)	
Stage II	374 (5.1)	20 (2.1)	130 (8.2)	183 (5.5)	32 (6.2)	9 (1.0)	
Stage III	1,431 (19.6)	212 (22.6)	430 (27.2)	558 (16.7)	115 (22.2)	116 (12.3)	
Stage IV	2,674 (36.6)	310 (33.0)	388 (24.6)	1,344 (40.3)	178 (34.4)	454 (48.2)	
Unknown <sup>c</sup>	1,765 (24.1)	345 (36.8)	430 (27.2)	546 (16.4)	122 (23.6)	322 (34.2)	

**Table S1** (continued)

**Table S1** (continued)

Characteristic	Total <sup>a</sup>	Histological Classification					P value <sup>d</sup>
		Small cell carcinoma	Squamous cell carcinoma	Adenocarcinoma	Others <sup>b</sup>	Unknown <sup>c</sup>	
Lesion site							<0.01
Right	3,971 (54.3)	459 (48.9)	803 (50.9)	1,930 (57.9)	287 (55.4)	492 (52.3)	
Left	3,184 (43.6)	459 (48.9)	755 (47.8)	1,362 (40.8)	225 (43.4)	383 (40.7)	
Both	49 (0.7)	4 (0.4)	11 (0.7)	23 (0.7)	1 (0.2)	10 (1.1)	
Unknown <sup>c</sup>	107 (1.5)	16 (1.7)	10 (0.6)	20 (0.6)	5 (1.0)	56 (6.0)	
Treatment <sup>e</sup>							<0.01
No	6,307 (86.3)	849 (90.5)	1,366 (86.5)	3,061 (91.8)	451 (87.1)	580 (61.6)	
Yes <sup>h</sup>	954 (13)	86 (9.2)	196 (12.4)	257 (7.7)	67 (12.9)	348 (37.0)	
Unknown <sup>c</sup>	50 (0.7)	3 (0.3)	17 (1.1)	17 (0.5)	0 (0.0)	13 (1.4)	
Sample size	7,311	938	1579	3335	518	941	

Categorical data are shown as n (%). <sup>a</sup>, The total proportion may not be 100 due to the rounding. <sup>b</sup>, Including large cell carcinoma, carcinoid, sarcomatoid carcinoma, and adenosquamous carcinoma. <sup>c</sup>, Unknown data were not included in the statistical tests. <sup>d</sup>, P values were calculated by Chi square/Fisher exact test. <sup>e</sup>, Referring to lung diseases, such as tuberculosis, chronic bronchitis, emphysema, asthma, and silicosis/pneumoconiosis. <sup>f</sup>, Referring to participants with first-degree or second-degree relatives diagnosed with any type of lung cancer. <sup>g</sup>, BMI was calculated based on the height and weight values, and was categorized in to 3 groups according to the WHO standard, which were underweight (<18.5 kg/m<sup>2</sup>), normal (18.5–24.9 kg/m<sup>2</sup>), and overweight (≥25 kg/m<sup>2</sup>). <sup>h</sup>, Including surgery, chemotherapy, radiotherapy and targeted therapy. ,



**Figure S1** The 5-year survival rates (95% CIs) of lung cancer patients, by pathological stage (A,B) and by histological classification (C,D). Group 1: Red represents the findings of primary analysis in the manuscript. Group 2: Green represents the results based on the patients without follow-up within 6 months (Sensitivity analysis 1). Group 3: Blue represents the results after excluding the patients without follow-up within 12 months (Sensitivity analysis 2).