

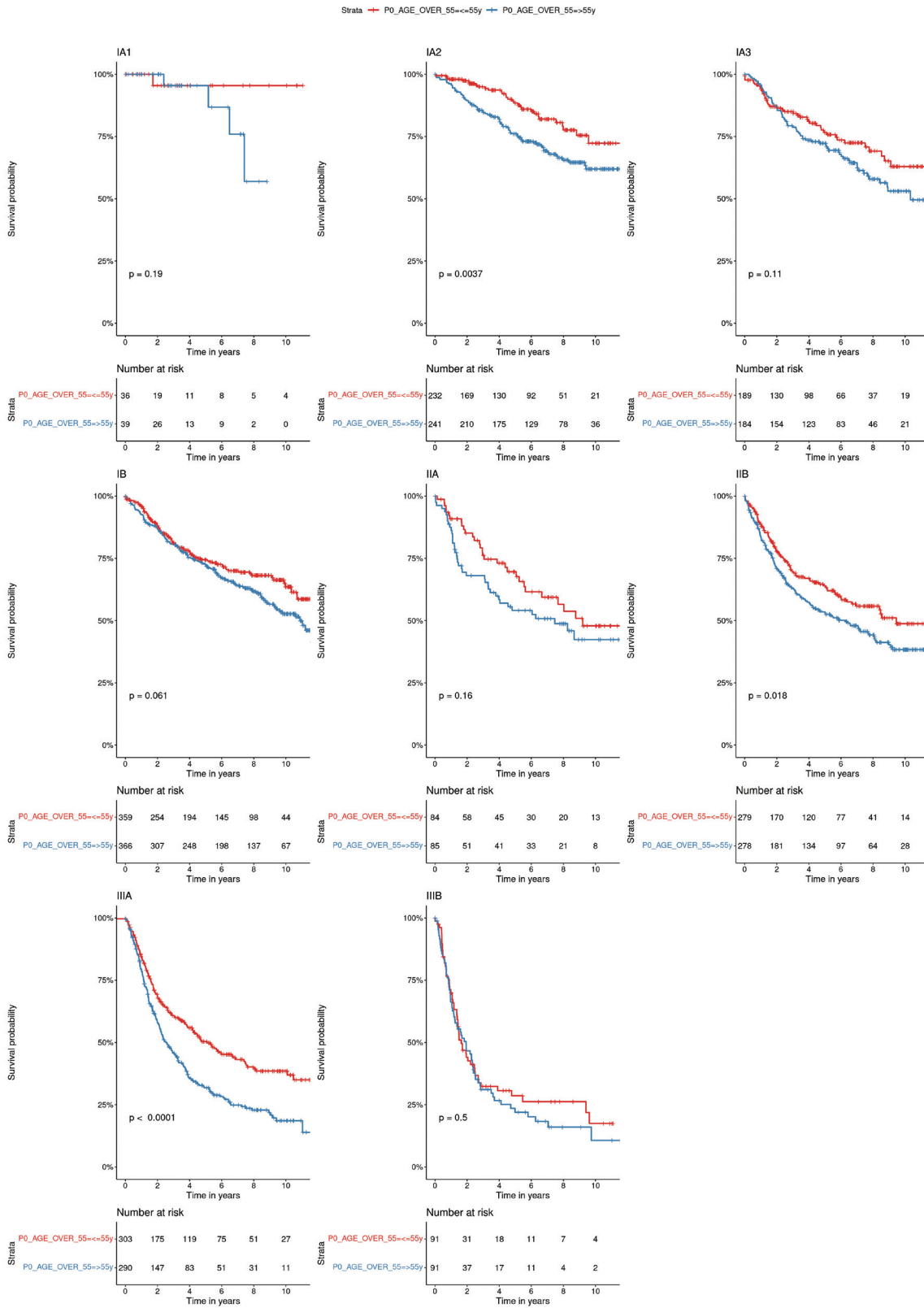
## Supplementary

**Table S1** Generalized variance inflation factor (GVIF) computed to detect potential multicollinearity

Variable	GVIF	Df	GVIF <sup>(1/(2*Df))</sup>
Pathological stage	3.33694014402708	7	1.08988839868063
Insulin-dependent diabetes	1.00243037212266	1	1.0012144486186
Chronic obstructive pulmonary disease	1.00549856654793	1	1.00274551434944
pN descriptor	3.29394868986028	3	1.21979300436624
Surgery	1.14597796033803	2	1.03465143950646
Surgical approach	1.03461802932927	1	1.01716175180218

**Table S2** Univariate Cox analysis

Characteristics	Estimate	Std. error	Statistic	P value
<b>Stage</b>				
IA2	2.15181585466034	0.457906195796232	1.67351321357426	0.0942263075116295
IA3	3.12284371534673	0.457131908312944	2.49106223657557	0.0127361807944967
IB	3.20044573845321	0.45195858836687	2.57388646507503	0.01005632667839
IIA	4.71030280928637	0.462962502579042	3.34746807365063	0.000815533809704846
IIB	5.30435835433693	0.451889050471322	3.69234176374902	0.000222198591371329
IIIA	8.3595011240728	0.450474125038836	4.71369748701772	2.43261732475704e-06
IIIB	13.5822276625942	0.456402069744267	5.71592970666108	1.09105836112385e-08
Insulin-dependent diabetes	1.70656818448517	0.210609751802414	2.53779532875836	0.0111553202505048
Chronic obstructive pulmonary disease	1.12057851734933	0.0789288896946123	1.4423753550528	0.149196512455476
<b>pN descriptor</b>				
pN1	1.98111775254069	0.0843943325360056	8.10079523548166	5.46010853891335e-16
pN2	3.17469894280134	0.0741220141759335	15.585286227408	9.16519101825077e-55
pNX	1.72036009201769	0.0814282196756703	6.66272241857486	2.68801069213171e-11
Upper lobectomy	0.972259415446049	0.0673263787934629	-0.417854373207439	0.676053593715917
Pneumonectomy	2.01674831082809	0.0841425697482399	8.33687952913959	7.62767040143594e-17
Video-assisted thoracoscopic surgery	0.489906848553266	0.119496991383677	-5.97119645173351	2.35519935258678e-09



**Figure S1** Stage subgroups analysis of 5 years survivals.