

Table S1 Results of logistic regression

Variable	Value	Lower confidence	Upper confidence	P value
(Intercept)	-1.59	-1.82	-1.35	<0.01
Age	0.00	0.00	0.00	0.41
Sex	-0.06	-0.11	-0.01	0.02
Stage	-0.11	-0.13	-0.08	<0.01
Smoking	-0.35	-0.40	-0.30	<0.01
Diabetes type 1	-0.56	-0.69	-0.43	<0.01
Cardiac infarction	0.00	-0.10	0.10	0.99
Neurological diseases	-1.31	-1.63	-1.01	<0.01
Heart failure	-0.05	-0.20	0.11	0.54
Kidney failure	0.16	-0.07	0.40	0.17
Chronic obstructive pulmonary disease	0.34	0.28	0.39	<0.01
Hypertension	-0.14	-0.19	-0.09	<0.01
Coronary disease	-0.05	-0.14	0.05	0.31
pT	0.15	0.12	0.17	<0.01
pN	0.27	0.24	0.30	<0.01
Upper lobectomy	-0.04	-0.09	0.02	0.17
Pneumonectomy	0.01	-0.07	0.10	0.75
Video-assisted thoracic surgery	0.70	0.63	0.76	<0.01
Squamous cell carcinoma	0.08	0.03	0.13	<0.01
Mediastinoscopy	-0.10	-0.21	0.02	0.09
Sum of N1 examined nodes	0.89	0.85	0.92	<0.01
Sum of N2 examined nodes	-0.07	-0.08	-0.05	<0.01

Table S2 5-year overall survival rates [95% CI] of the patients

Subgroup	Academic (%)	Nonacademic (%)	P value
Clinical stage descriptor			
IA	66 [65–68]	69 [67–71]	0.13
IB	54 [53–56]	53 [51–54]	0.1
IIA	57 [52–64]	61 [55–68]	0.05
IIB	47 [44–49]	48 [45–50]	0.63
IIIA	47 [44–50]	45 [43–48]	0.41
IIIB	46 [39–54]	51 [45–58]	0.28
IV	37 [23–58]	51 [41–64]	0.32
Pathological stage descriptor			
IA1	79 [72–87]	77 [70–85]	0.76
IA2	75 [72–78]	74 [71–77]	0.68
IA3	67 [64–70]	69 [67–72]	0.71
IB	66 [64–68]	63 [61–65]	0.03
IIA	58 [55–62]	59 [56–62]	0.21
IIB	52 [50–54]	50 [48–52]	0.16
IIIA	37 [35–40]	39 [37–41]	0.22
IIIB	27 [23–32]	26 [22–30]	0.3

CI, confidence interval.

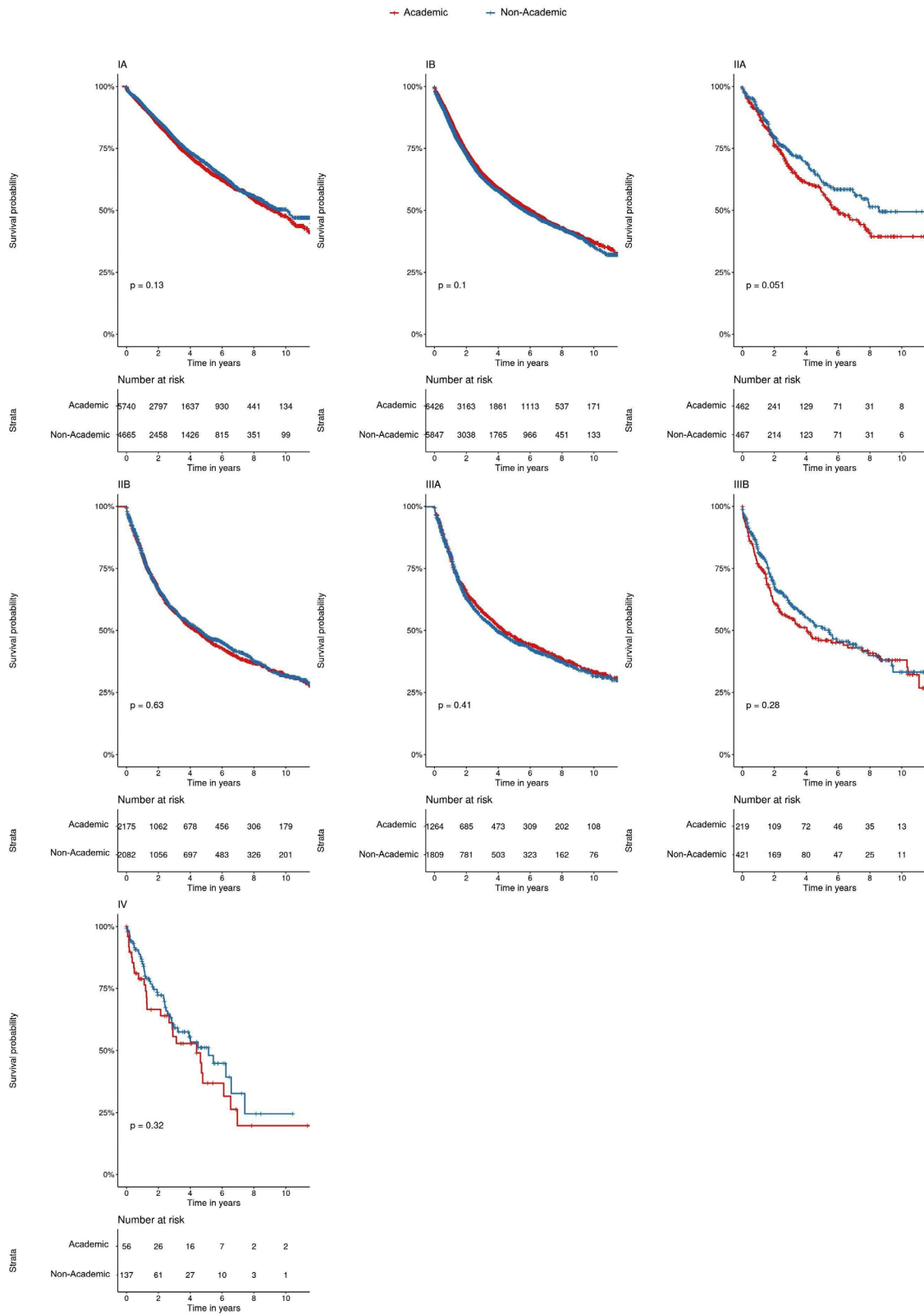


Figure S1 5-year survival rates (95% CI) of the patients regarding clinical stage.