

Figure S1 Distribution of *SLC22A1* (A) and *SLC22A2* (B) gene read counts in LSCC cohort. LSCC, lung squamous cell carcinoma; FPKM, fragments per kilobase of exon per million mapped fragments.

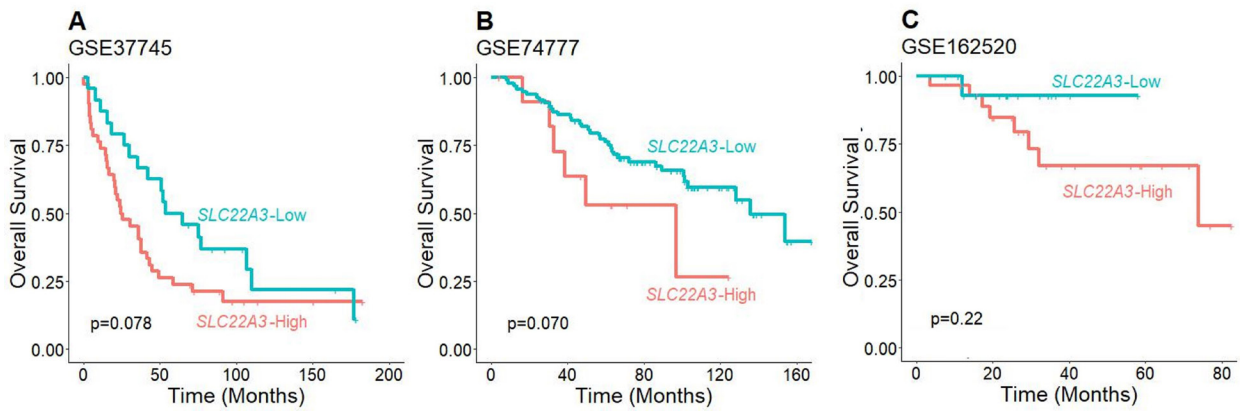


Figure S2 The OS Kaplan-Meier analyses of *SLC22A3*-high and *SLC22A3*-low LSCC samples in the GSE37745 (A), GSE74777 (B), and GSE162520 (C) datasets. OS, overall survival; LSCC, lung squamous cell carcinoma.