

Figure S1 Flow diagram of the inclusion criteria of study cohort. AIS, adenocarcinoma in situ; MIA, minimally invasive adenocarcinoma; CT, computed tomography.

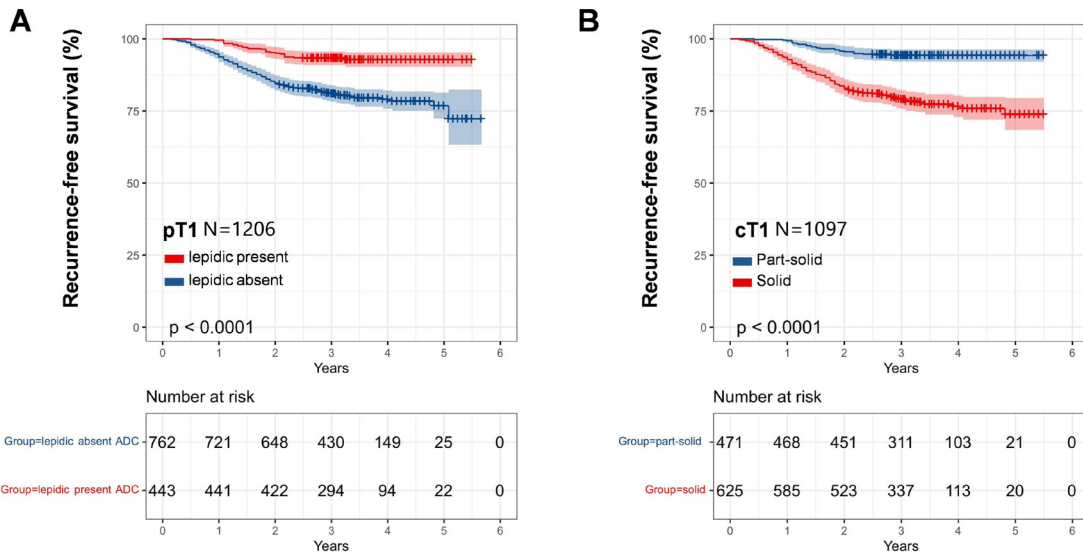


Figure S2 Recurrence-free survival of pathological and clinical T1 stage patients. (A) Recurrence-free survival of lepidic present and lepidic absent patients in pathological T1 stages. (B) Recurrence-free survival of GGO present and GGO absent patients in clinical T1 stages. pT, pathologic T; cT, clinic T; GGO, ground-glass opacity.

Table S1 Radiological features of different histologic subtypes

Histologic predominant subtype	Radiology features			Total
	Pure GGO	Part-solid	Solid	
Lepidic, n (%)	9 (14.1)	55 (85.9)	0 (0)	64
Acinar, n (%)	29 (3.1)	409 (44.2)	488 (52.7)	926
Papillary, n (%)	17 (5.1)	136 (40.7)	181 (54.2)	334
Micropapillary, n (%)	0 (0)	0 (0)	44 (100.0)	44
Solid, n (%)	0 (0)	0 (0)	122 (100.0)	122

GGO, ground-glass opacity.

Table S2 Univariate and multivariate survival analysis in pathological T2-4 patients

Characteristics	Univariate analysis		Multivariate analysis			
	Hazard ratio (95% CI)	P value	Hazard ratio (95% CI)	P value	Hazard ratio (95% CI)	P value
Age	0.999 (0.979–1.019)	0.918				
Sex, male	1.457 (0.966–2.198)	0.073	1.286 (0.702–2.357)	0.415	1.217 (0.675–2.196)	0.514
Smoking, ever	1.493 (1.002–2.226)	0.049	1.259 (0.698–2.273)	0.444	1.344 (0.758–2.384)	0.311
Surgery						
Sublobar resection	Reference					
Lobectomy	0.844 (0.369–1.930)	0.688				
Pneumonectomy	0.505 (0.061–4.199)	0.527				
LVI, presence	1.648 (1.107–2.452)	0.014	1.453 (0.958–2.203)	0.079	1.392 (0.913–2.122)	0.124
N-stage						
N0	Reference					
N1-2	1.811 (1.219–2.693)	0.003	1.573 (1.037–2.388)	0.033	1.555 (1.018–2.376)	0.041
Pathological invasive size	1.029 (1.012–1.046)	<0.001	1.024 (1.007–1.041)	0.006		
Radiological solid size	1.022 (1.007–1.037)	0.003			1.017 (1.002–1.032)	0.031
Predominant subtype						
Acinar	Reference					
Papillary	0.984 (0.598–1.622)	0.951				
Micropapillary	1.201 (0.513–2.809)	0.673				
Solid	0.996 (0.604–1.640)	0.986				

LVI, lymphovascular invasion.

Table S3 Univariate and multivariate survival analysis in clinical T2-4 patients

Characteristics	Univariate analysis		Multivariate analysis			
	Hazard ratio (95% CI)	P value	Hazard ratio (95% CI)	P value	Hazard ratio (95% CI)	P value
Age	0.989 (0.971–1.007)	0.231				
Sex, male	1.135 (0.789–1.634)	0.495				
Smoking, ever	1.312 (0.913–1.886)	0.142				
Surgery						
Sublobar resection	Reference					
Lobectomy	0.688 (0.320–1.479)	0.338				
Pneumonectomy	0.446 (0.055–3.630)	0.451				
LVI, presence	1.681 (1.163–2.428)	0.006	1.429 (0.980–2.083)	0.064	1.428 (0.977–2.086)	0.066
N-stage						
N0	Reference					
N1-2	2.028 (1.407–2.922)	<0.001	1.733 (1.190–2.524)	0.004	1.797 (1.232–2.622)	0.002
Invasive size	1.029 (1.015–1.042)	<0.001	1.025 (1.012–1.039)	<0.001		
Solid size	1.023 (1.007–1.039)	0.005			1.019 (1.003–1.035)	0.017
Predominant subtype						
Acinar	Reference					
Papillary	0.863 (0.536–1.389)	0.544				
Micropapillary	1.070 (0.547–2.095)	0.843				
Solid	1.020 (0.642–1.620)	0.934				

LVI, lymphovascular invasion.

Table S4 The scheme of all the sub-groups

Abbreviation	Full name of sub-group
Lepidic-present ADC	Invasive adenocarcinomas with lepidic component
Lepidic-absent ADC	Invasive adenocarcinomas without lepidic component
Lepidic+ GGO+	Invasive adenocarcinomas with both lepidic and ground-glass opacity component
Lepidic– GGO+	Invasive adenocarcinomas with ground-glass opacity component and without lepidic component
Lepidic+ GGO–	Invasive adenocarcinomas with lepidic component and without ground-glass opacity component
Lepidic– GGO–	Invasive adenocarcinomas without neither lepidic and ground-glass opacity component
pT1(a,b,c)+	Pathological T-stage1(a,b,c) invasive adenocarcinomas with lepidic component
pT1(a,b,c) –	Pathological T-stage1(a,b,c) invasive adenocarcinomas without lepidic component
cT1(a,b,c)+	Clinical T-stage1(a,b,c) invasive adenocarcinomas with ground-glass opacity component
cT1(a,b,c)+	Clinical T-stage1(a,b,c) invasive adenocarcinomas without ground-glass opacity component

ADC, adenocarcinoma; GGO, ground-glass opacity; pT, pathologic T; cT, clinic T.