

Table S1 Comparing baseline characteristics according to PD-L1 expression status

Characteristics	PD-L1 positive (n=24)	PD-L1 negative (n=13)	P value
Age (years)	63 [49–84]	65 [50–78]	–
Gender			0.95
Male	15 [63]	8 [62]	
Female	9 [38]	5 [38]	
Smoking history			0.64
Never-smoker	13 [54]	6 [46]	
Ex/current-smoker	11 [46]	7 [54]	
Histologic type			0.17
Adenocarcinoma	24 [100]	12 [92]	
Squamous cell carcinoma	0 [0]	1 [8]	
Metastasis site			
CNS	12 [50]	6 [46]	0.82
Liver	3 [13]	3 [23]	0.41
Bone	12 [50]	9 [69]	0.26
Previous lines of chemotherapy	2 [0–8]	1 [1–6]	–
Previous chemotherapy			
TKI	6 [25]	1 [8]	0.20
Immune checkpoint inhibitor	10 [42]	3 [23]	0.26
Platinum-based chemotherapy	22 [92]	13 [100]	0.29
Methods of EGFR mutation analysis			0.86
PCR (PANAMutyper)	3 [13]	3 [23]	
PCR (others)	3 [13]	0 [0]	
NGS, CancerSCAN	2 [8]	5 [38]	
NGS, OncoPrint	6 [25]	2 [15]	
NGS, TruSight Oncology 500	5 [21]	2 [15]	
NGS, Guardant 360	3 [13]	1 [8]	
NGS, FoundationOne	2 [8]	0 [0]	
Site of EGFR mutation			0.42
C-helix	1 [4]	1 [8]	
A763_Y764insFQEA	1	1	
Near loop	12 [50]	8 [62]	
A767_S768insTLA	1	0	
S768_V769insLDS	1	0	
V769_D770insASV	4	2	
D770_N771insP	0	1	
D770_N771insSVD	4	4	
D770_N771insNPH	1	0	
D770delinsGY	1	0	
P772_H773insT	0	1	
Far loop	6 [25]	1 [8]	
H773_V774insPH	1	1	
H773_V774insANPH	1	0	
H773_V774insNPH	1	0	
H773_V774insH	1	0	
V774_C775insCPHV	1	0	
V774_C775insNPHV	1	0	
Unknown	5 [21]	3 [23]	
TP53 status			0.90
Positive	8 [33]	5 [38]	
Negative	9 [38]	5 [38]	
Unknown	7 [29]	3 [23]	

Data are presented as median [range], n [%], or n. PD-L1, programmed death ligand-1; CNS, central nervous system; TKI, tyrosine kinase inhibitor; EGFR, epidermal growth factor receptor; PCR, polymerase chain reaction; NGS, next-generation sequencing; TP53, tumor protein p53.

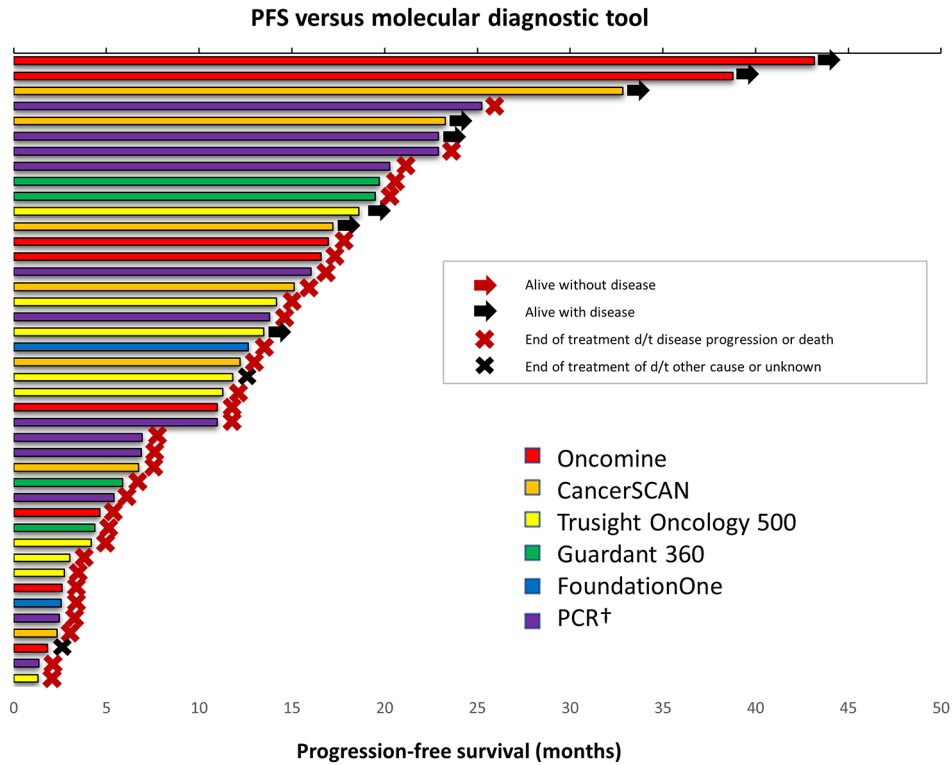


Figure S1 PFS *vs.* molecular diagnostic tools. †, PCR means the patient was confirmed to have an exon 20 insertion mutation through the use of RT-PCR (PANAMutyper™ EGFR kit). PFS, progression-free survival; RT-PCR, real-time polymerase chain reaction; EGFR, epidermal growth factor receptor.

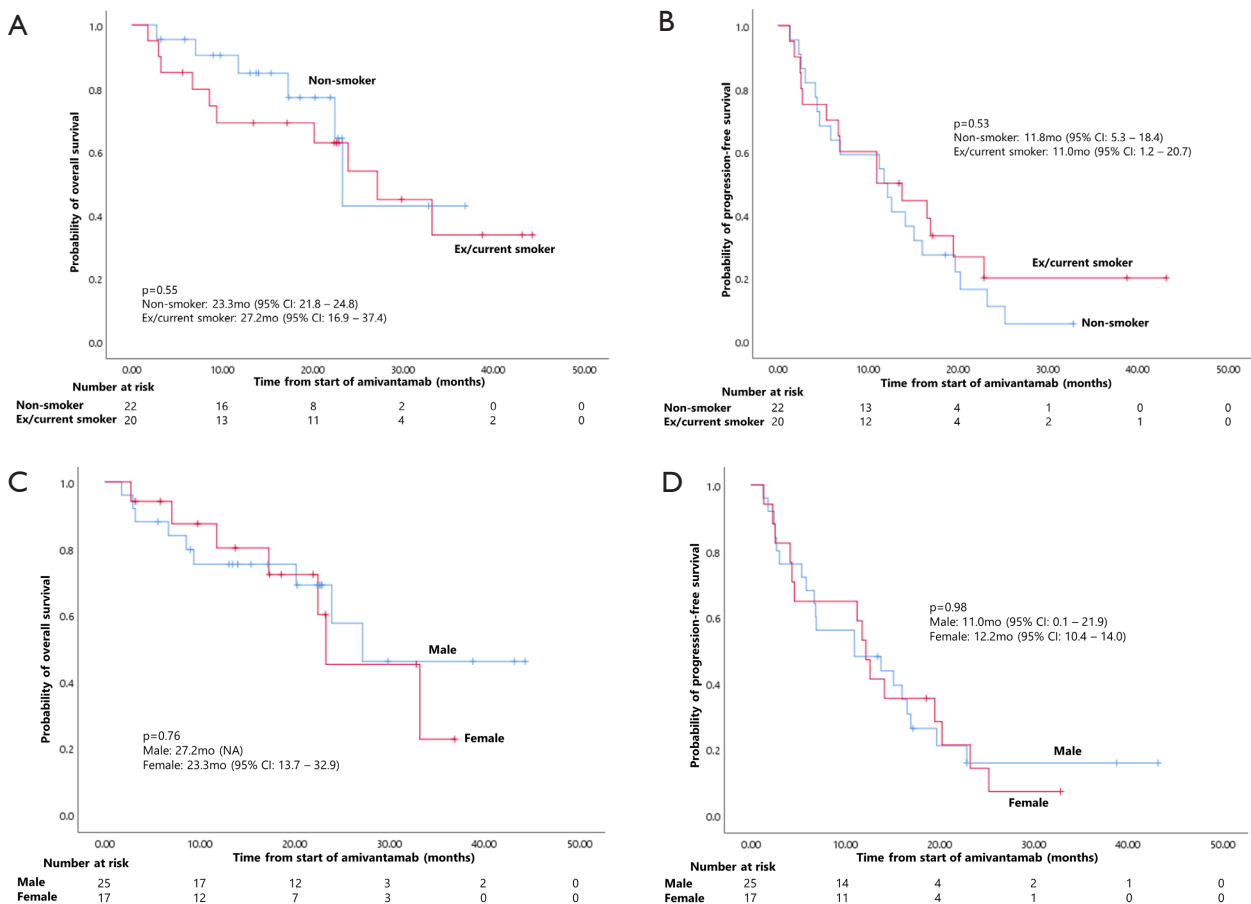


Figure S2 OS and PFS according to smoking status and gender. (A) OS according to smoking status. (B) PFS according to smoking status. (C) OS according to gender. (D) PFS according to gender. mo, months; CI, confidence interval; NA, not available; OS, overall survival; PFS, progression-free survival.

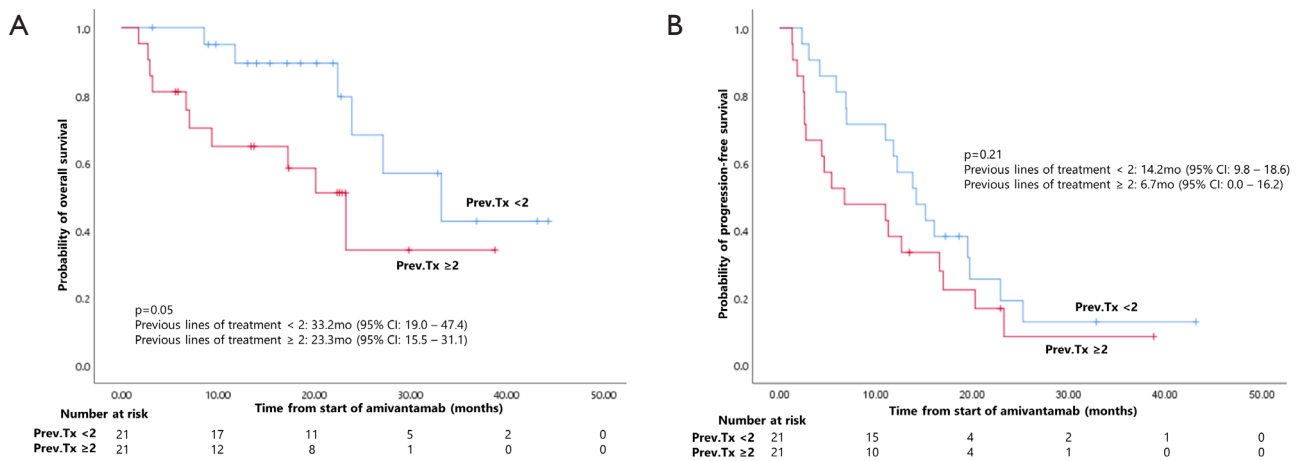


Figure S3 OS and PFS according to previous lines of treatment (first and second line amivantamab *vs.* third line or more advanced line amivantamab). (A) OS according to previous lines of treatment. (B) PFS according to previous lines of treatment. Prev.Tx, previous lines of treatment; mo, months; CI, confidence interval; OS, overall survival; PFS, progression-free survival.

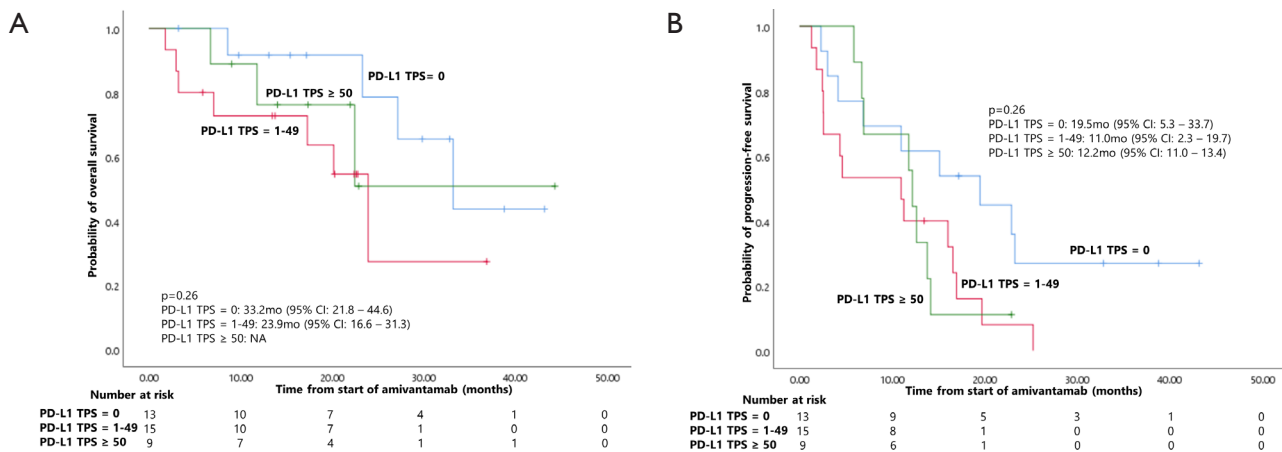


Figure S4 OS and PFS according to PD-L1 expression status (PD-L1 TPS less than 0 *vs.* 1–49% *vs.* 50% and more than 50%). (A) OS according to PD-L1 expression. (B) PFS according to PD-L1 expression. PD-L1, programmed death-ligand 1; TPS, tumor proportion score; mo, months; CI, confidence interval; NA, not available; OS, overall survival; PFS, progression-free survival.