

Figure S1 Flow diagram.

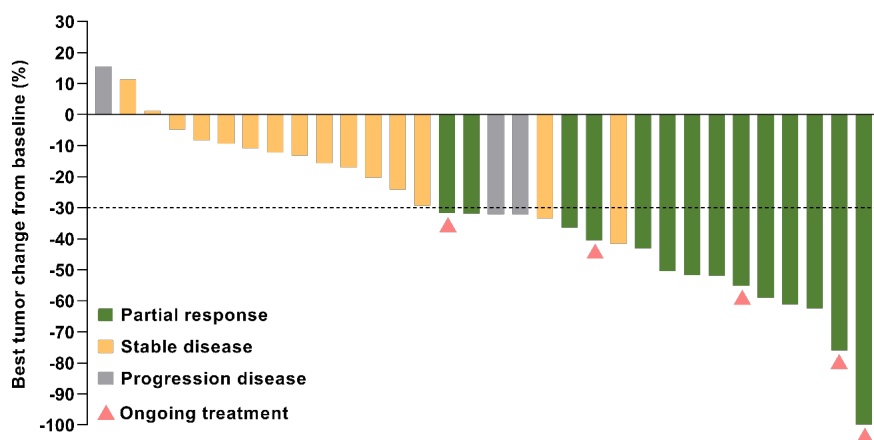
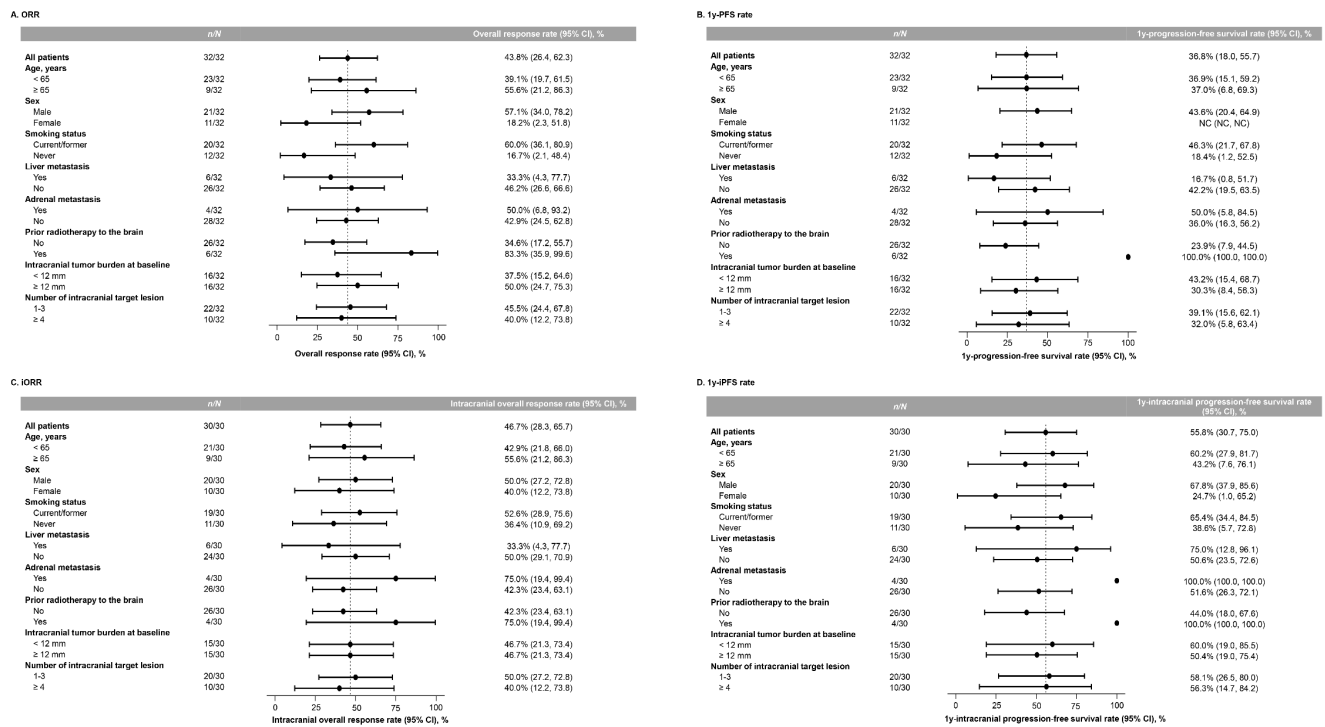
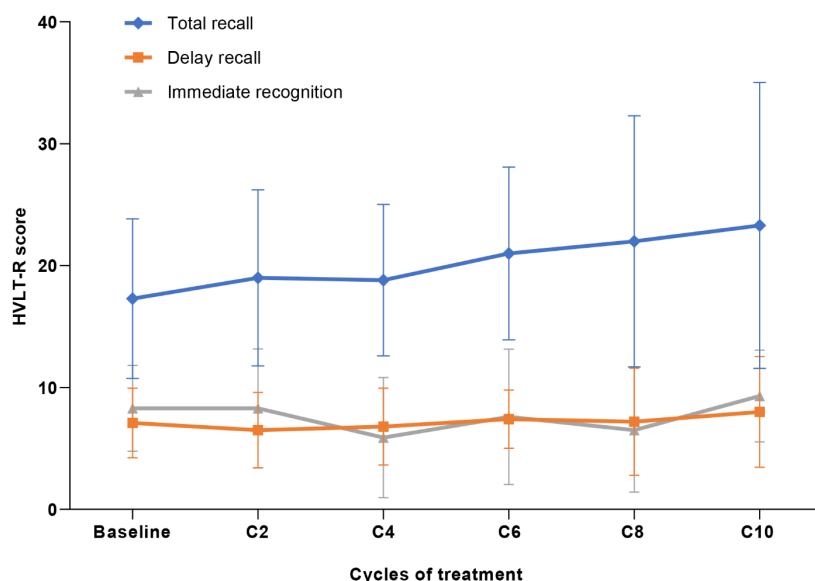


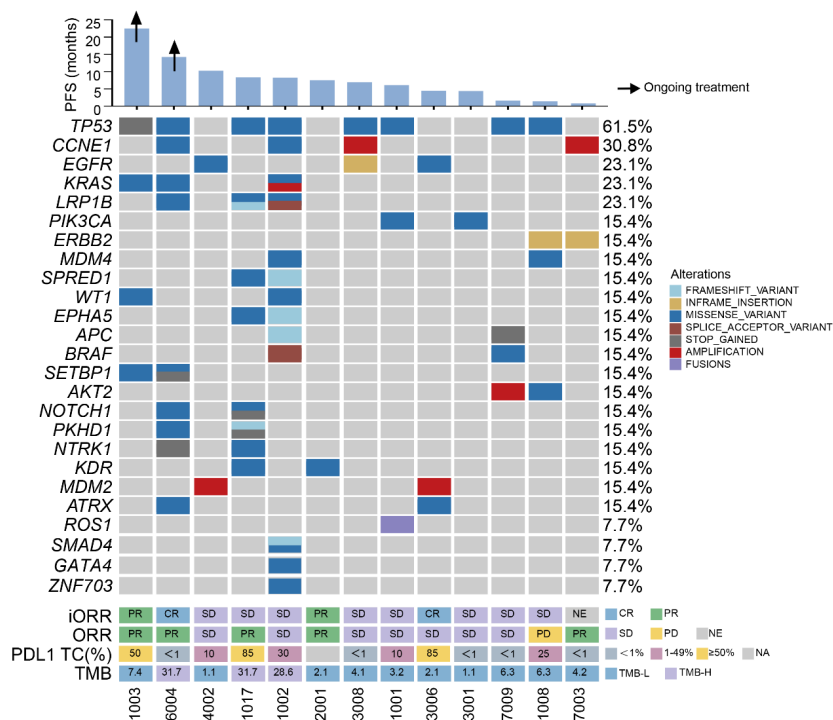
Figure S2 Waterfall plot for best percentage change in sums of diameters of target lesions from baseline in Response Evaluation Criteria in Solid Tumors (RECIST) 1.1 efficacy analysis set (n=32). Best responses were assessed by RECIST v1.1. Each bar represents an individual patient. Two patients had progressive diseases (PD) despite >30% shrinkage of target lesions due to the development of new lesions in brain or liver.



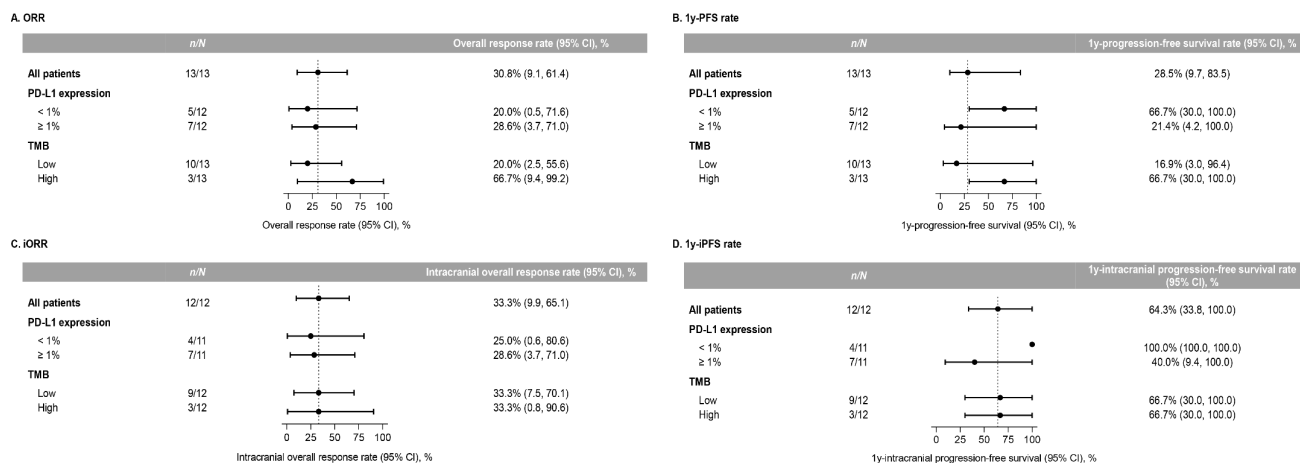
**Figure S3** Subgroup analysis for systemic and intracranial efficacy by clinicopathological features. Forest plots show systemic objective response rate (A), 1-year progression-free survival rate (B), intracranial objective response rate (C) and 1-year intracranial PFS rate (D) by clinicopathological features. CI, confidence interval; ORR, objective response rate; PFS, progression-free survival; iORR, intracranial objective response rate; iPFS, intracranial progression-free survival.



**Figure S4** Hopkins Verbal Learning Test-Revised (HVLt-R) Scores. Raw scores were derived from the cognitive assessments. Data were plotted as means plus or minus standard deviations.



**Figure S5** Baseline mutation profiles, PD-L1 and TMB of patients. The heatmap depicts Top 25 mutated genes in this study. Reported frequencies include a composite of missense, nonsense, indel, splice mutations, copy-number variants and fusions for each gene. The top bar chart shows progression-free survival of each patient, and arrow indicates patients are still ongoing treatment. The clinical benefits (intracranial overall response rate, overall response rate), PD-L1 expression and TMB values are annotated in the bottom panel. PD-L1, programmed cell death protein-ligand 1; TMB, tumor mutational burden.



**Figure S6** Subgroup analysis for systemic and intracranial efficacy by PD-L1 expression and TMB. Forest plots show systemic objective response rate (A), 1-year PFS rate (B), intracranial objective response rate (C) and 1-year iPFS rate (D) in PD-L1 or TMB subgroups. PD-L1, programmed cell death protein-ligand 1; TMB, tumor mutational burden; CI, confidence interval; ORR, objective response rate; PFS, progression-free survival; iORR, intracranial objective response rate; iPFS, intracranial progression-free survival.