

**Table S1** The distribution of LN dissection of the enrolled patients before and after PSM

| Characteristics                     | Before PSM                            |                                       |        | After PSM                             |                                       |       |
|-------------------------------------|---------------------------------------|---------------------------------------|--------|---------------------------------------|---------------------------------------|-------|
|                                     | 8LND <sup>-</sup> patients<br>(n=948) | 8LND <sup>+</sup> patients<br>(n=261) | P      | 8LND <sup>-</sup> patients<br>(n=522) | 8LND <sup>+</sup> patients<br>(n=261) | P     |
| Station 2 LN dissection, n (%)      |                                       |                                       | 0.84   |                                       |                                       | 0.62  |
| No                                  | 369 (38.9)                            | 104 (39.8)                            |        | 197 (37.7)                            | 104 (39.8)                            |       |
| Yes                                 | 579 (61.1)                            | 157 (60.2)                            |        | 325 (62.3)                            | 157 (60.2)                            |       |
| Dissected station 2 LNs, mean ± SD  | 1.68±2.16                             | 1.59±2.25                             | 0.55   | 1.59±1.98                             | 1.59±2.25                             | >0.99 |
| Station 3 LN dissection, n (%)      |                                       |                                       | 0.007  |                                       |                                       | 0.50  |
| No                                  | 851 (89.8)                            | 218 (83.5)                            |        | 447 (85.6)                            | 218 (83.5)                            |       |
| Yes                                 | 97 (10.2)                             | 43 (16.5)                             |        | 75 (14.4)                             | 43 (16.5)                             |       |
| Dissected station 3 LNs, mean ± SD  | 0.17±0.62                             | 0.31±1.04                             | 0.005  | 0.22±0.62                             | 0.31±1.04                             | 0.10  |
| Station 4 LN dissection, n (%)      |                                       |                                       | 0.65   |                                       |                                       | 0.89  |
| No                                  | 239 (25.2)                            | 70 (26.8)                             |        | 136 (26.1)                            | 70 (26.8)                             |       |
| Yes                                 | 709 (74.8)                            | 191 (73.2)                            |        | 386 (73.9)                            | 191 (73.2)                            |       |
| Dissected station 4 LNs, mean ± SD  | 1.63±1.66                             | 1.61±1.64                             | 0.90   | 1.52±1.48                             | 1.61±1.64                             | 0.44  |
| Station 5 LN dissection, n (%)      |                                       |                                       | 0.44   |                                       |                                       | >0.99 |
| No                                  | 620 (65.4)                            | 178 (68.2)                            |        | 355 (68.0)                            | 178 (68.2)                            |       |
| Yes                                 | 328 (34.6)                            | 83 (31.8)                             |        | 167 (32.0)                            | 83 (31.8)                             |       |
| Dissected station 5 LNs, mean ± SD  | 0.58±0.99                             | 0.45±0.79                             | 0.04   | 0.54±0.96                             | 0.45±0.79                             | 0.20  |
| Station 6 LN dissection, n (%)      |                                       |                                       | 0.40   |                                       |                                       | 0.78  |
| No                                  | 726 (76.6)                            | 207 (79.3)                            |        | 420 (80.5)                            | 207 (79.3)                            |       |
| Yes                                 | 222 (23.4)                            | 54 (20.7)                             |        | 102 (19.5)                            | 54 (20.7)                             |       |
| Dissected station 6 LNs, mean ± SD  | 0.42±1.02                             | 0.37±0.96                             | 0.43   | 0.33±0.83                             | 0.37±0.96                             | 0.53  |
| Station 7 LN dissection, n (%)      |                                       |                                       | >0.99  |                                       |                                       | >0.99 |
| No                                  | 0 (0.0)                               | 0 (0.0)                               |        | 0 (0.0)                               | 0 (0.0)                               |       |
| Yes                                 | 948 (100.0)                           | 261 (100.0)                           |        | 522 (100.0)                           | 261 (100.0)                           |       |
| Dissected station 7 LNs, mean ± SD  | 2.26±1.63                             | 1.92±1.39                             | 0.002  | 1.94±1.29                             | 1.92±1.39                             | 0.85  |
| Station 9 LN dissection, n (%)      |                                       |                                       | <0.001 |                                       |                                       | 0.65  |
| No                                  | 447 (47.2)                            | 83 (31.8)                             |        | 176 (33.7)                            | 83 (31.8)                             |       |
| Yes                                 | 501 (52.8)                            | 178 (68.2)                            |        | 346 (66.3)                            | 178 (68.2)                            |       |
| Dissected station 9 LNs, mean ± SD  | 0.73±0.88                             | 0.86±0.75                             | 0.03   | 0.88±0.86                             | 0.86±0.75                             | 0.69  |
| Station 10 LN dissection, n (%)     |                                       |                                       | 0.001  |                                       |                                       | >0.99 |
| No                                  | 194 (20.5)                            | 30 (11.5)                             |        | 59 (11.3)                             | 30 (11.5)                             |       |
| Yes                                 | 754 (79.5)                            | 231 (88.5)                            |        | 463 (88.7)                            | 231 (88.5)                            |       |
| Dissected station 10 LNs, mean ± SD | 1.84±1.77                             | 2.03±1.55                             | 0.12   | 1.98±1.61                             | 2.03±1.55                             | 0.67  |
| Station 11 LN dissection, n (%)     |                                       |                                       | 0.22   |                                       |                                       | 0.69  |
| No                                  | 179 (18.9)                            | 40 (15.3)                             |        | 73 (14.0)                             | 40 (15.3)                             |       |
| Yes                                 | 769 (81.1)                            | 221 (84.7)                            |        | 449 (86.0)                            | 221 (84.7)                            |       |
| Dissected station 11 LNs, mean ± SD | 1.81±1.61                             | 1.83±1.64                             | 0.89   | 1.94±1.57                             | 1.83±1.64                             | 0.35  |
| Station 12 LN dissection, n (%)     |                                       |                                       | 0.28   |                                       |                                       | >0.99 |
| No                                  | 492 (51.9)                            | 125 (47.9)                            |        | 251 (48.1)                            | 125 (47.9)                            |       |
| Yes                                 | 456 (48.1)                            | 136 (52.1)                            |        | 271 (51.9)                            | 136 (52.1)                            |       |
| Dissected station 12 LNs, mean ± SD | 1.04±1.49                             | 1.03±1.44                             | 0.87   | 1.06±1.40                             | 1.03±1.44                             | 0.75  |
| Station 13 LN dissection, n (%)     |                                       |                                       | 0.02   |                                       |                                       | 0.66  |
| No                                  | 797 (84.1)                            | 235 (90.0)                            |        | 463 (88.7)                            | 235 (90.0)                            |       |
| Yes                                 | 151 (15.9)                            | 26 (10.0)                             |        | 59 (11.3)                             | 26 (10.0)                             |       |
| Dissected station 13 LNs, mean ± SD | 0.32±0.89                             | 0.18±0.61                             | 0.02   | 0.21±0.73                             | 0.18±0.61                             | 0.51  |

PSM, propensity score matching; 8LND, station 8 lymph node dissection; LN, lymph node; SD, standard deviation.

**Table S2** Univariable and multivariable analysis of the CSS in all enrolled patients

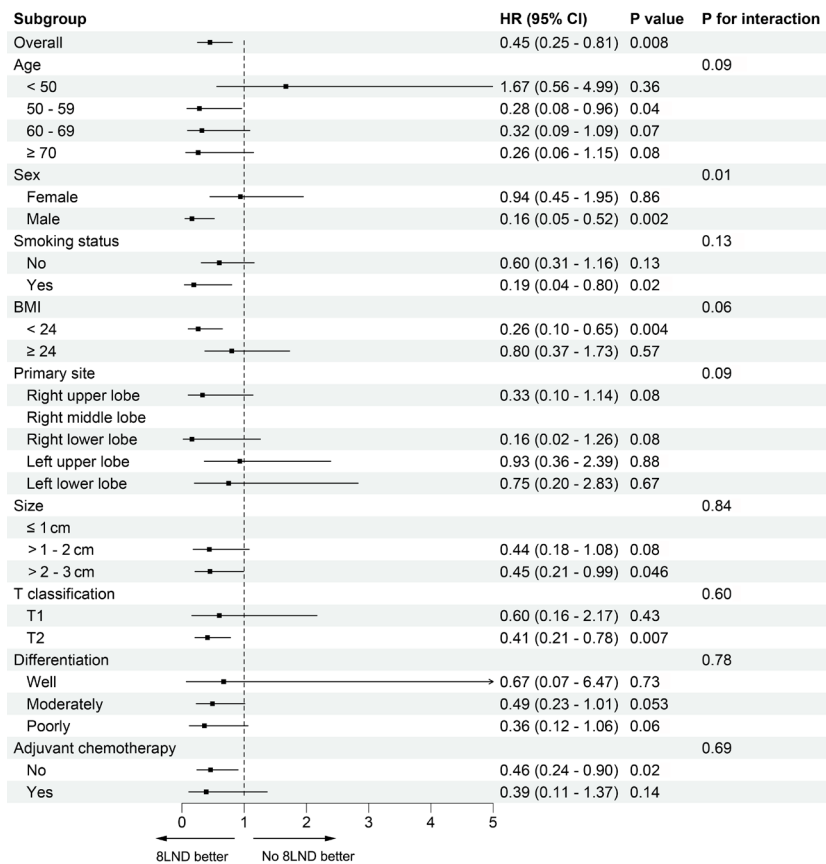
| Characteristics           | Univariable analysis |       | Multivariable analysis |      |
|---------------------------|----------------------|-------|------------------------|------|
|                           | HR (95% CI)          | P     | HR (95% CI)            | P    |
| Age (years)               |                      |       |                        |      |
| <50                       | Reference            |       | Reference              |      |
| 50–59                     | 1.66 (0.53–5.21)     | 0.39  | 1.33 (0.42–4.23)       | 0.63 |
| 60–69                     | 1.18 (0.37–3.77)     | 0.78  | 0.9 (0.28–2.94)        | 0.86 |
| ≥70                       | 3.93 (1.25–12.33)    | 0.02  | 2.14 (0.66–7.01)       | 0.21 |
| Sex                       |                      |       |                        |      |
| Female                    | Reference            |       | Reference              |      |
| Male                      | 2.18 (1.12–4.23)     | 0.02  | 2.32 (1.17–4.62)       | 0.02 |
| Smoking status            |                      |       |                        |      |
| No                        | Reference            |       |                        |      |
| Yes                       | 1.16 (0.57–2.36)     | 0.68  |                        |      |
| BMI (kg/m <sup>2</sup> )  |                      |       |                        |      |
| <24                       | Reference            |       |                        |      |
| ≥24                       | 0.88 (0.45–1.72)     | 0.71  |                        |      |
| Primary site              |                      |       |                        |      |
| Right upper lobe          | Reference            |       | Reference              |      |
| Right middle lobe         | 2.41 (0.92–6.36)     | 0.08  | 2.21 (0.82–5.98)       | 0.12 |
| Right lower lobe          | 1.06 (0.36–3.1)      | 0.92  | 1.04 (0.35–3.1)        | 0.94 |
| Left upper lobe           | 1.3 (0.51–3.33)      | 0.58  | 1.46 (0.57–3.77)       | 0.43 |
| Left lower lobe           | 1.78 (0.64–4.9)      | 0.27  | 1.66 (0.59–4.63)       | 0.33 |
| Size                      |                      |       |                        |      |
| ≤1 cm                     | Reference            |       | Reference              |      |
| >1–2 cm                   | 3.12 (0.41–23.72)    | 0.27  | 2.68 (0.34–20.83)      | 0.35 |
| >2–3 cm                   | 5.72 (0.77–42.59)    | 0.09  | 3.27 (0.42–25.15)      | 0.26 |
| T classification          |                      |       |                        |      |
| T1                        | Reference            |       | Reference              |      |
| T2                        | 2.34 (1.02–5.35)     | 0.05  | 1.61 (0.67–3.87)       | 0.29 |
| Differentiation           |                      |       |                        |      |
| Well differentiated       | Reference            |       | Reference              |      |
| Moderately differentiated | 2.78 (0.63–12.19)    | 0.18  | 2.25 (0.5–10.12)       | 0.29 |
| Poorly differentiated     | 10.18 (2.37–43.75)   | 0.002 | 6.91 (1.55–30.84)      | 0.01 |
| Adjuvant chemotherapy     |                      |       |                        |      |
| No                        | Reference            |       |                        |      |
| Yes                       | 1.03 (0.43–2.5)      | 0.94  |                        |      |
| Station 2 dissection      |                      |       |                        |      |
| No                        | Reference            |       |                        |      |
| Yes                       | 0.66 (0.34–1.27)     | 0.21  |                        |      |
| Station 3 dissection      |                      |       |                        |      |
| No                        | Reference            |       |                        |      |
| Yes                       | 1.34 (0.61–2.95)     | 0.47  |                        |      |
| Station 4 dissection      |                      |       |                        |      |
| No                        | Reference            |       |                        |      |
| Yes                       | 0.58 (0.29–1.15)     | 0.12  |                        |      |
| Station 5 dissection      |                      |       |                        |      |
| No                        | Reference            |       |                        |      |
| Yes                       | 1.14 (0.57–2.25)     | 0.72  |                        |      |

Table S2 (continued)

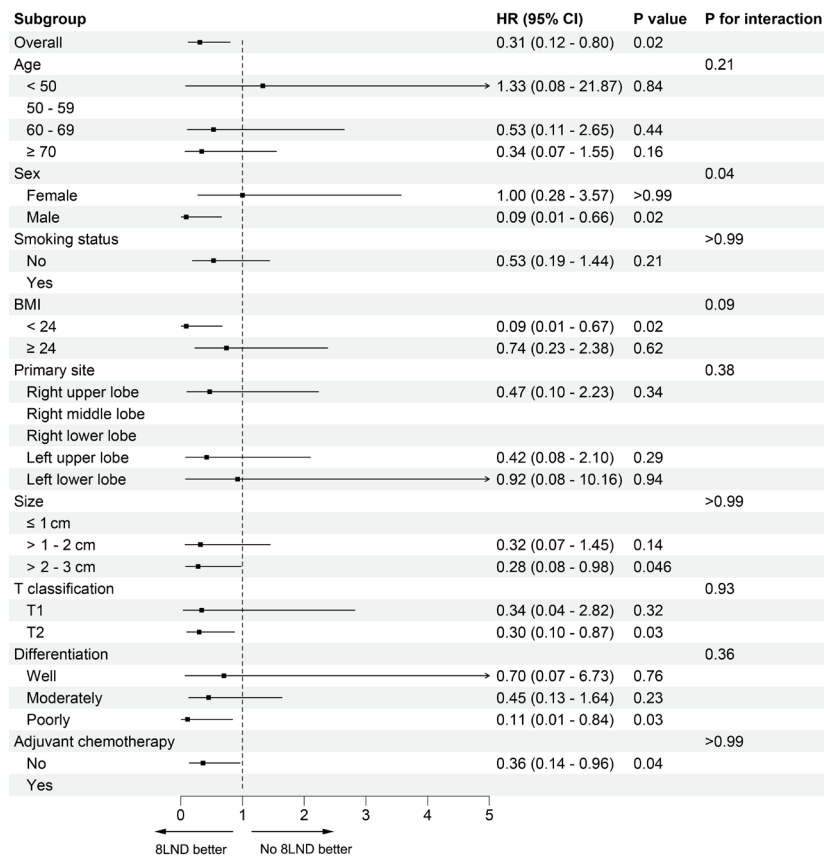
**Table S2** (continued)

| Characteristics         | Univariable analysis |       | Multivariable analysis |      |
|-------------------------|----------------------|-------|------------------------|------|
|                         | HR (95% CI)          | P     | HR (95% CI)            | P    |
| Station 6 dissection    |                      |       |                        |      |
| No                      | Reference            |       |                        |      |
| Yes                     | 1.26 (0.61–2.62)     | 0.53  |                        |      |
| Dissected station 2 LNs |                      |       |                        |      |
| ≤2                      | Reference            |       |                        |      |
| >3                      | 1.25 (0.63–2.48)     | 0.52  |                        |      |
| Station 8 dissection    |                      |       |                        |      |
| No                      | Reference            |       | Reference              |      |
| Yes                     | 0.37 (0.13–1.04)     | 0.06  | 0.35 (0.12–1.00)       | 0.05 |
| Station 9 dissection    |                      |       |                        |      |
| No                      | Reference            |       |                        |      |
| Yes                     | 0.79 (0.4–1.54)      | 0.49  |                        |      |
| Station 10 dissection   |                      |       |                        |      |
| No                      | Reference            |       |                        |      |
| Yes                     | 1.08 (0.45–2.6)      | 0.86  |                        |      |
| Station 11 dissection   |                      |       |                        |      |
| No                      | Reference            |       |                        |      |
| Yes                     | 0.81 (0.39–1.68)     | 0.57  |                        |      |
| Station 12 dissection   |                      |       |                        |      |
| No                      | Reference            |       |                        |      |
| Yes                     | 0.97 (0.48–1.96)     | 0.93  |                        |      |
| Station 13 dissection   |                      |       |                        |      |
| No                      | Reference            |       |                        |      |
| Yes                     | 0 (0–Inf)            | >0.99 |                        |      |

CSS, cancer-specific survival; HR, hazard ratio; CI, confidence interval; BMI, body mass index; LN, lymph node.



**Figure S1** Subgroup analysis of the PFS of the matched patients. In certain subgroups the HR could not be evaluated because all patients in 8LND\* group were still alive until the last follow-up. HR, hazard ratio; CI, confidence interval; BMI, body mass index; 8LND, station 8 lymph node dissection; PFS, progression-free survival.



**Figure S2** Subgroup analysis of the OS of the matched patients. In certain subgroups the HR could not be evaluated because all patients in 8LND<sup>+</sup> group were still alive until the last follow-up. HR, hazard ratio; CI, confidence interval; BMI, body mass index; 8LND, station 8 lymph node dissection; OS, overall survival.

**Table S3** Sensitivity analysis: the effect of 8LND on the prognosis after excluding patients of certain subgroup from the matched patients

| Excluded subgroup  | PFS              |         | OS               |         |
|--|------------------|---------|------------------|---------|
|  | HR (95% CI)      | P value | HR (95% CI)      | P value |
| Excluding patients whose age <50 years                       | 0.29 (0.14–0.61) | 0.001   | 0.26 (0.09–0.75) | 0.01    |
| Excluding patients whose age 50–59 years                     | 0.54 (0.27–1.06) | 0.07    | 0.48 (0.18–1.31) | 0.15    |
| Excluding patients whose age 60–69 years                     | 0.51 (0.26–0.99) | 0.048   | 0.24 (0.07–0.82) | 0.02    |
| Excluding patients whose age ≥70 years                       | 0.51 (0.27–0.96) | 0.04    | 0.28 (0.08–0.97) | 0.045   |
| Excluding female patients                                    | 0.16 (0.05–0.52) | 0.002   | 0.09 (0.01–0.66) | 0.02    |
| Excluding male patients                                      | 0.94 (0.45–1.95) | 0.86    | 1.00 (0.28–3.57) | >0.99   |
| Excluding non-smoking patients                               | 0.19 (0.04–0.80) | 0.02    | 0 (0–Inf)        | >0.99   |
| Excluding smoking patients                                   | 0.6 (0.31–1.16)  | 0.13    | 0.53 (0.19–1.44) | 0.21    |
| Excluding patients whose BMI <24 kg/m <sup>2</sup>           | 0.8 (0.37–1.73)  | 0.57    | 0.74 (0.23–2.38) | 0.62    |
| Excluding patients whose BMI ≥24 kg/m <sup>2</sup>           | 0.26 (0.10–0.65) | 0.004   | 0.09 (0.01–0.67) | 0.02    |
| Excluding patients with a tumor in the right upper lobe      | 0.51 (0.26–0.99) | 0.047   | 0.26 (0.08–0.87) | 0.03    |
| Excluding patients with a tumor in the right middle lobe     | 0.52 (0.28–0.94) | 0.03    | 0.38 (0.14–1.02) | 0.06    |
| Excluding patients with a tumor in the right lower lobe      | 0.53 (0.28–0.98) | 0.04    | 0.38 (0.14–1.02) | 0.054   |
| Excluding patients with a tumor in the left upper lobe       | 0.29 (0.13–0.65) | 0.003   | 0.25 (0.07–0.84) | 0.03    |
| Excluding patients with a tumor in the left lower lobe       | 0.41 (0.21–0.78) | 0.007   | 0.26 (0.09–0.76) | 0.01    |
| Excluding patients whose tumor ≤1 cm                         | 0.45 (0.25–0.81) | 0.007   | 0.3 (0.11–0.77)  | 0.01    |
| Excluding patients whose tumor >1–2 cm                       | 0.46 (0.21–1)    | 0.049   | 0.3 (0.09–1.04)  | 0.06    |
| Excluding patients whose tumor >2–3 cm                       | 0.44 (0.18–1.08) | 0.07    | 0.34 (0.07–1.53) | 0.16    |
| Excluding patients whose tumor T classification was T1       | 0.41 (0.21–0.78) | 0.007   | 0.3 (0.1–0.87)   | 0.03    |
| Excluding patients whose tumor T classification was T2       | 0.6 (0.16–2.17)  | 0.43    | 0.34 (0.04–2.82) | 0.32    |
| Excluding patients whose tumor was well differentiated       | 0.43 (0.24–0.8)  | 0.007   | 0.27 (0.09–0.79) | 0.02    |
| Excluding patients whose tumor was moderately differentiated | 0.43 (0.16–1.13) | 0.09    | 0.2 (0.05–0.89)  | 0.03    |
| Excluding patients whose tumor was poorly differentiated     | 0.5 (0.25–1)     | 0.049   | 0.48 (0.16–1.47) | 0.20    |

0 (0–Inf) indicated that the HR could not be evaluated because all patients in 8LND<sup>+</sup> group were still alive until the last follow-up. 8LND, station 8 lymph node dissection; PFS, progression-free survival; OS, overall survival; HR, hazard ratio; CI, confidence interval; BMI, body mass index.